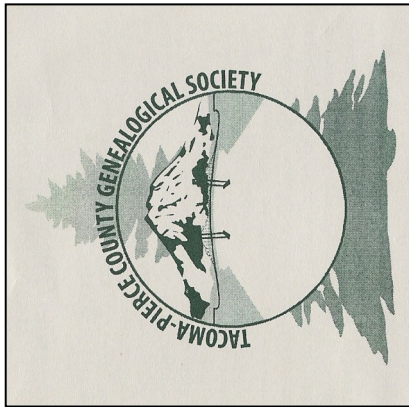


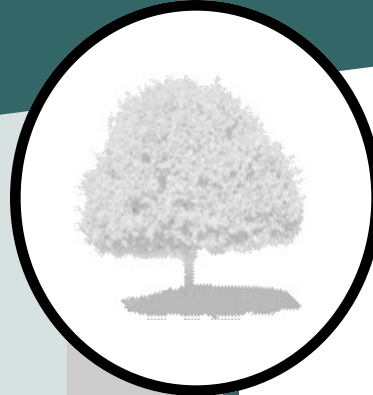
Tacoma-Pierce County Genealogical Society  
P.O. Box 1952  
Tacoma, Washington 98401  
**ADDRESS SERVICE REQUESTED**

Non-Profit Org.  
US Postage  
PAID  
Tacoma WA  
Permit No 431



**Saturday, May 7, 2011  
with Laura G. Prescott**

# *TPCGS Spring Seminar*



**Tacoma-Pierce County  
Genealogical Society**

**TPCGS Spring Seminar  
Saturday, May 7, 2011**



**Laura G. Prescott** is a professional researcher, writer, and speaker. She graduated with a B.A. in History from Dartmouth College in 1980, ultimately putting her degree to good use over a decade later when she discovered a latent passion for genealogy. Originally from Charleston, West Virginia, she has lived in New England for over thirty years. She worked for the New England Historic Genealogical Society for seven years before starting her own research business in 2005.

Laura is the president of the Association of Professional Genealogists, genealogist for the Nickerson Family Association, and a consultant at Footnote.com. She lectures and writes for national audiences on a variety of genealogical and historical topics. She speaks at national, international, and regional conferences. Her specialties include the use of manuscripts in genealogical research, genealogy on the Internet, genealogy for Mac users, and weaving history into genealogy. Her work has appeared in *Ancestry*, *NGS NewsMagazine*, *Digital Genealogist*, *New England Ancestors*, and other genealogical publications.

Laura comes to us highly recommended by our own **Cyndi Howells** of *Cyndi's List*, who will be the emcee.

### Location

#### La Quinta Inns and Suites

1425 East 27th Street

Tacoma, Washington

- I-5 South-bound: exit 135-Portland Ave.
- I-5 North-bound: exit 134-Portland Ave. and turn left.
- A limited number of rooms will be available at a special rate for seminar attendees.

### Raffle Tickets

\$1.00 tickets for sale with registration and also at the door and during the seminar.

### Door Prizes

Grand Prize: [FlipPal Mobile Scanner](#)

Runner-Up Prizes: Flash Drives,  
Pictorial Histories

### Turning Fiction Into Fact

Are those old stories grandma told really true? Learn helpful, systematic strategies to discover the truth behind family legends, identify strangers in family photos, and correct the family record without losing the charm of the myth . . .

### Treasures Within the Ivory Tower: Finding Family in Academic Archives

Locating an ancestor within the archives of an *alma mater* produces a wealth of family information, photos, correspondence, and more! Learn where to look, what you can find, and the most efficient techniques to get the information you seek.

### Schedule

- Registration: 8:00 - 8:45am
- Opening Remarks by **Cyndi Howells**: 9:00 am
- Lectures Begin: 9:30 am
- Lunch Break: 12:00 pm - 1:30pm
- Lectures Continue: 1:30 pm - 4:00 pm
- Raffle Prizes & Wrap-Up: 4:00 pm

### Luncheon

- Luncheon by La Quinta: \$15.00
- Salad and sandwich bar
- For the luncheon you must pay in advance with your registration to reserve a spot

### Registration

Before April 20, 2011: Members, \$35; Non-Members, \$40; Students, \$20. **After April 20th, add \$5 late fee.**

### Timelines: Placing Your Heritage in Historical Perspective

Match historical events to an ancestor's life, or synchronize one ancestor's life events to another's using genealogical software as well as everyday software programs to create a graphic profile and timeline.

### The Rest of the Story: Using Manuscripts to create a Family History

Tap into great repositories of historical treasure! Discover where to find family in special collections archives and why manuscripts and artifacts are essential to building your family's story.

### TPCGS Spring Seminar Registration

Registration	Number	Price	Total
<input type="checkbox"/> Members		35.00	
<input type="checkbox"/> Non-Members		40.00	
<input type="checkbox"/> Student (Under 25 with Student ID)		20.00	
<input type="checkbox"/> <b>Late Fee (After April 20th)</b>		5.00	
<input type="checkbox"/> Luncheon		15.00	
<input type="checkbox"/> Raffle Tickets		1.00	

Total: \_\_\_\_\_

Name \_\_\_\_\_

Address \_\_\_\_\_

School (Students Only) \_\_\_\_\_

Phone \_\_\_\_\_

E-mail \_\_\_\_\_

**Make checks payable to: TPCGS**

**Send check, the completed form above, and a SASE\* to:**

**Marie Hayden  
TPCGS Registrar  
4010 No. 36th St.  
Tacoma, WA 98407**

**\*You must enclose a self-addressed stamped envelope or you will not receive your confirmation!  
Questions: [jane\\_irish\\_nelson@yahoo.com](mailto:jane_irish_nelson@yahoo.com)**