



INSIDE THIS ISSUE:

Winter 2012 Edition

Table of Contents

Branch & Executive Information	Page 2
Past President's Report	Page 3
Tidbits	Page 4
A Strong Connection	Page 6
Provincial Digitization Initiative	Page 10
File Sharing with Dropbox	Page 11
Branch Member Recognized	Page 12
Federation of Family History Societies	Page 13
Library Additions	Page 14

CALENDAR OF EVENTS

Sunday February 5, 2012

Heritage Fair, Western Development Museum, 12 PM–5 PM

Thursday February 16, 2012

Regular meeting Albert Community Centre

- Using an obituary to glean information for a pedigree chart and Family Unit Sheet
- Group discussion - Successes of 2011 and plans for 2012

This Edition's Coordinating Editor is Bonnie Lymer

MEETING INFORMATION

Place: Albert Community Centre, 610 Clarence Avenue S.

Dates: Third Thursday of each month, except July & August.

Time: The Library is open from 5:00 - 7:00 PM.

The Meeting runs from 7:15 - 9:30 PM. Meetings start with the President's report, followed by member interest discussions, guest speakers or genealogical workshops.

Website: <http://www.sksgs.tk>

Library Website: <http://www.sbsgs.org/index.html>

Mailing Address: Saskatoon Genealogy Society
Box 21028
Saskatoon, SK S7H 5N9

MEMBERSHIP & NEWSLETTER INFO

Branch membership fees are \$20.00/ year. There is a \$15.00 charge for all NSF cheques. Joining the Saskatoon Branch (SBSGS) requires that you also join the Saskatchewan Genealogical Society (SGS) which has an annual fee of \$40.00 (regular rate) or \$50.00 (value-added rate). Branch membership also includes 10 branch meetings, access to our Saskatoon Branch Library, access to the SGS Library and a copy of this newsletter 5 times during the year.

This newsletter will be published near the beginning of January, March, May, September & November, and it is available in either printed form or as a Portable Document Format file (pdf) version via Email. For those members of our local branch who wish to have a printed version of the newsletter mailed out, please bring a self addressed, stamped large (9x12) envelope to a general meeting or mail them to the branch or newsletter editor. The number of self-addressed envelopes determines how many times a year the newsletter is mailed out to you.

Articles are always required for the next issue and future issues of the Newsletter. Please submit by the third Wednesday of the month prior to publication month.

SBSGS 2012 BRANCH EXECUTIVE

PRESIDENT:

René Stock

rene@stockfamily.ca

Phone 306-374-8507

VICE PRESIDENT:
VACANT
PAST PRESIDENT:

Eleanor Ritchie

eritchie@sasktel.net

Phone 306-653-1285

TREASURER:

James Wood

Jk.wood@sasktel.net

Phone 306-373-6007

SECRETARY:

Brenda Armstrong

MEMBERS-AT-LARGE

Larry Crook

Jane Richardson

GREETER:

Peter Geres

WEBMASTER:

Gina Reid

reidg@shaw.ca

LIBRARIANS:

Georgiana Chartier

g.chartier@sasktel.net

Phone 306-652-1286

Elsie Henry

Mary Hudson

PROGRAMS:

Bev Gutenberg

beverleygutenberg@sasktel.net

Eleanor Ritchie

NEWSLETTER:

Bonnie Lymer, editor

Bonnie.lymer@shaw.ca

René Stock - publisher

rene@stockfamily.ca

Phone 306-374-8507

MEMBERSHIP:

Cindy Paradis

cindysfamilyhistory@gmail.com

PHONERS:

Natalie Threlfall

Phone 306-374-7520

PUBLIC RELATIONS:

Trudy Fisher

REFRESHMENTS:

Mavis Wall

Brenda Armstrong

FUNDRAISING:

Gerry Threlfall

Marilyn McPherson

CEMETERY COORDINATORS:

Merle Ward

merleward@shaw.ca

Phone: 306-652-0664

Our branch will only remain viable if volunteers step forward with fresh new ideas to assist in the running of our society. If you have some ideas on the direction the branch should take and are up to an interesting & rewarding challenge.

Please VOLUNTEER!



THE FAMILY TREE

Housekeeping Rules:

Everyone is requested to assist with setup and re-stacking tables and chairs.

We must leave the facilities clean and tidy so please come prepared to help clean up after each meeting.

We are expected to set up and take down all tables and chairs for every event held at Albert Community Centre.

WE GRATEFULLY
ACKNOWLEDGE THE
FOLLOWING
ORGANIZATIONS.



From the Past President

As this newsletter goes to press, 2011 reached its conclusion and we can look back on a very busy and successful year. Our members are so committed to the efforts of the Branch to promote genealogy and derive their own successes as well. Membership remained stable and we were pleased to welcome eight new members. I am so pleased to be associated with these people..."let me count the ways":

First of all, each committee contributed a substantial amount of time and effort to the operational side of things. The Library extended their hours to permit more access for research, maintained our most popular journal subscriptions and added new books. They are exploring the benefits of added hours at a time other than at our monthly meeting. The Fund Raising committee has kept our coffers in the black and gave us the added pleasure of working together as we sold hot dogs or conducted the silent auction and 50/50 draws. The Treasurer, of course, managed our money prudently. The Program committee arranged programs that were of interest to all, whatever our area of genealogy. The Membership coordinator diligently notified us of meetings etc as well as maintaining an up to date membership list. The Cemetery committee continued the ongoing task of recording the cemeteries. Although our Facebook presence hasn't attracted much traffic, our website regularly attracts a wide reader ship: international as well as local, provincial or national. Our Public Relations committee ensures that publicity of Branch activities appears in local publications. The Armchair Genealogist has brought timely and interesting articles to our members. And our Refreshment committee ensures we have a cup of coffee and a tasty snack to add to our pleasure. Several members represent the Branch on external committees. Thank you one and all for all that you have done.

This year the Branch celebrated the 40th Anniversary of its formation by hosting the annual SGS Conference and General Meeting. A commemorative plaque was awarded to the branch by the SGS and is in the library. The conference theme "Beyond the Basics" attracted registrants from Alberta and Manitoba as well as our home province. Pre-conference tours were very popular and the speakers were superb as we explored new directions to expand our genealogical research. In Sept, we held a one day workshop on Using the Internet to Research in the British Isles, the new Family Search site and Library Archives and Canada. These events were both stimulating and energizing. Members worked very hard to mount these two major genealogical events and I give them great credit for these endeavours. On a personal level these same people experienced some exciting successes as several member "found" new family members to add to their tree and actually met them. Now that's genealogical triumph.

November marks the end of the year for the Branch; and the time when Executive positions expire and a new executive is elected. The new Executive is announced elsewhere in this newsletter. I'd like to close by extending a heartfelt thank you to the Executive members. I appreciate your hard work and it was pleasure working with you. And Best Wishes to the 2012 Executive.

Eleanor Ritchie

A Note From the Editor

by Bonnie Lymer

I am finally at the point of putting out our first newsletter of the year. This is far too late in being published, and I apologize for that. I also apologize that it does not contain as much information as I would like, but I did want to ensure that something went out this month, even if it wasn't very much.

I have no excuse to offer other than that I have really been suffering from writer's block and need your ideas. This is my request, once again, and at the risk of sounding like a nag, to please consider sending me your stories and/or ideas.

I have spoken to many of you at branch meetings, and I know that you have great stories to tell. I know this, because I have heard some of them. As much as I enjoy hearing your stories, I know that others do as well. Even if all that you can provide is an idea, that will be a great starting point for me.

I do appreciate your patience in waiting as long as you have for this newsletter. I will do my utmost to ensure

2012 Heritage Festival

By Heritage Committee representative Bonnie Lymer

The 2012 Heritage Festival will be held on Sunday, February 5 at the Western Development Museum.

As always, the Saskatoon Branch of the Saskatchewan Genealogical Society will have a booth at the festival.

We are always in need of volunteers to work this booth. Even if you can only spare an hour or two of your time, we will be grateful. Volunteers are needed for set-up, taking down the display, and being on hand to meet visitors and answer their questions.

If you are able to help in any way, please contact an executive member.

Your Queries Go Here

Contact the editor to place your queries in this section.

Seeking info about parents of **McDonald, John** born 10 Aug 1807, Gallia County, Ohio, USA, married Samantha Reed on 14 Aug 1832 in Meigs Co., died 24 Oct 1888 Apple River, Illinois. Children were William 1833, Laurilla 1834, George 1836, Adaline 1838, Mary 1840, William A. 1842, Amanda 1844, John L. 1847, Marcus A. 1850. John moved from Ohio to Virginia in 1823; lived there until 1828; he then went to Missouri., and remained there until 1831, when he removed to Greene County., Wisconsin., where he resided until 1834; he then came to Illinois; since then Jo Daviess County.

Computer Tips

This is a new feature that we will be running (hopefully every issue), assuming that we can find enough tips to publish (and I can not see that being a problem). Sometimes, the simplest things that one person takes for granted are things that others are completely unaware of.

This issue's tip has been provided by Beverley Gutenberg:

A hint for those who feel the type on the Internet is too small. Hold the Control key and hit the plus (+) key to enlarge the print. Likewise to reduce the size of the printing, hold the Control key and press the minus (-) key.

Great suggestion, Bev!

If you have any tips that you would like to contribute, please submit them to bonnie.lymer@shaw.ca

SGS - Cemetery Care and Maintenance Program (SCCMP)

The Saskatchewan Genealogical Society (SGS) is pleased to announce a new cemetery initiative - the Saskatchewan Cemetery Care and Maintenance Program (SCCMP), supported by one-time funding from Saskatchewan Ministry of Justice and Attorney General. This pilot project is intended to provide some assistance to individuals, groups or communities who have an on-going interest in the care and maintenance of a private, non-commercial Saskatchewan cemetery.

The SCCMP complements the Saskatchewan Genealogical Society's existing Cemetery Program which focuses on locating and recording cemetery information throughout Saskatchewan.

The SCCMP will:

1. provide a central location for care and maintenance information,
2. assist individuals and groups to locate skilled or competent assistance when making physical repairs to cemeteries,
3. administer monies donated or contributed by benefactors to specific cemeteries,
4. receive and administer non-specific cemetery donations and gifts in kind for the care and maintenance of abandoned and/or neglected cemeteries in Saskatchewan,
5. manage an application process for care and maintenance grants as funds are available, and
6. coordinate cemetery care projects when contracted by individuals or groups.

Program guidelines and grant applications can be accessed at www.saskgenealogy.com.

For further information, contact:

Linda Dunsmore-Porter
Executive Director

Family Reunion Planning Time

By René Stock

The Family Reunion Season has arrived once again, and if you're like me and need lots of lead time, it's also time to begin planning for next year's reunion.

A successful reunion is the result of proper attention at the planning phase, usually by committee.

There are so many choices of methods for collaborating online for planning, and more methods are coming on stream periodically. Creating a Group with Yahoo or Google allows for notification of all members of new postings. Of particular note are the social network sites. Facebook groups allow for real-time chats, and the upcoming Google+ makes it easy to create Circles from existing members.

There are so many considerations when planning—choosing a venue that allows for the maximum number of participants in terms of travelling distance, adequate and varied accommodations, a range of activities, and allows for the type of meal preparation the group chooses (catered or self-prepared); choosing a time that will suit the most (the main reason for the early planning, so the holidays of working folks can be arranged to suit the reunion); choosing activities that will entertain diverse age groups. Of particular importance at these junctures is showing your family history research and gathering new information on marriages, births and deaths.

A Strong Connection

Submitted by Lorin Byrnes, October 31, 2011

In my endeavours to trace my ancestry, I found that my two great-great-grandmothers, Sarah Burch (married Samuel Windsor about 1814) and Welthy Bertch (who married Michael Byrnes about 1818), according to ages reported in Canadian census's Sarah would have been born in 1796 and Welthy in 1803.

In what appears to have been family tradition of the time, Sarah's firstborn son was named "Benjamin Strong Windsor" which would indicate that in his mother's background there was a family name of "Strong" which carried some weight or respect. The name of Benjamin would be after his grandfather, Benjamin Burch (#1). but as he had an uncle named Benjamin Burch (#2) he was known by his middle name of "Strong"

I have been unable to verify the marriages of the two Burch/Bertch girls to Windsor and Byrnes except that the couples were shown as parents in baptismal records in Lower Canada (now Quebec). The two families stayed in close geographic proximity for several generations (e.g. my great grandparents, Richard Byrnes married Caroline Windsor). Family tradition and Canadian census data were that each of the girls was born in USA. In searching records for the Burch/Bertch family I kept running into "Capt. John Strong" In most cases the mention of "Capt. John Strong" was a oneliner, but when other names were mentioned they were usually Burch, and quite often Benjamin. The Burch and Strong families were well known in the New England Colonies from the 17th century. They had large families and strings of Benjamins, Jeremiahs, Jonathons, Jedediahs, Johns, etc. spread about Connecticut, Massachusetts, Vermont, New York and probably other of the colonies as well.

I had difficulty deciding which Benjamin Burch, from which line, is the one that married a daughter related to which John Strong. I am convinced that Benjamin Burch () married Sarah (a daughter of John Strong) and their daughter, Sarah Burch (1796-18_), married Samuel Windsor. To avoid (or add) to the confusion I have decided to show the Benjamin Burch who married Sarah (Sally) Strong as Benjamin Burch (#2) with (#1) being his father and (#3) his son. (#2) and (#3) have both been designated as being "Junior".

My endeavours that follow are a "work in process" and I will attempt to create some sort of an assessment of the types of people who are my predecessors through bits and pieces of history. My decisions have been on the basis of what is most probable and discarding what is least probable, without any written documentation. I have perused many family trees and will use their data if it fits within the framework I have developed.

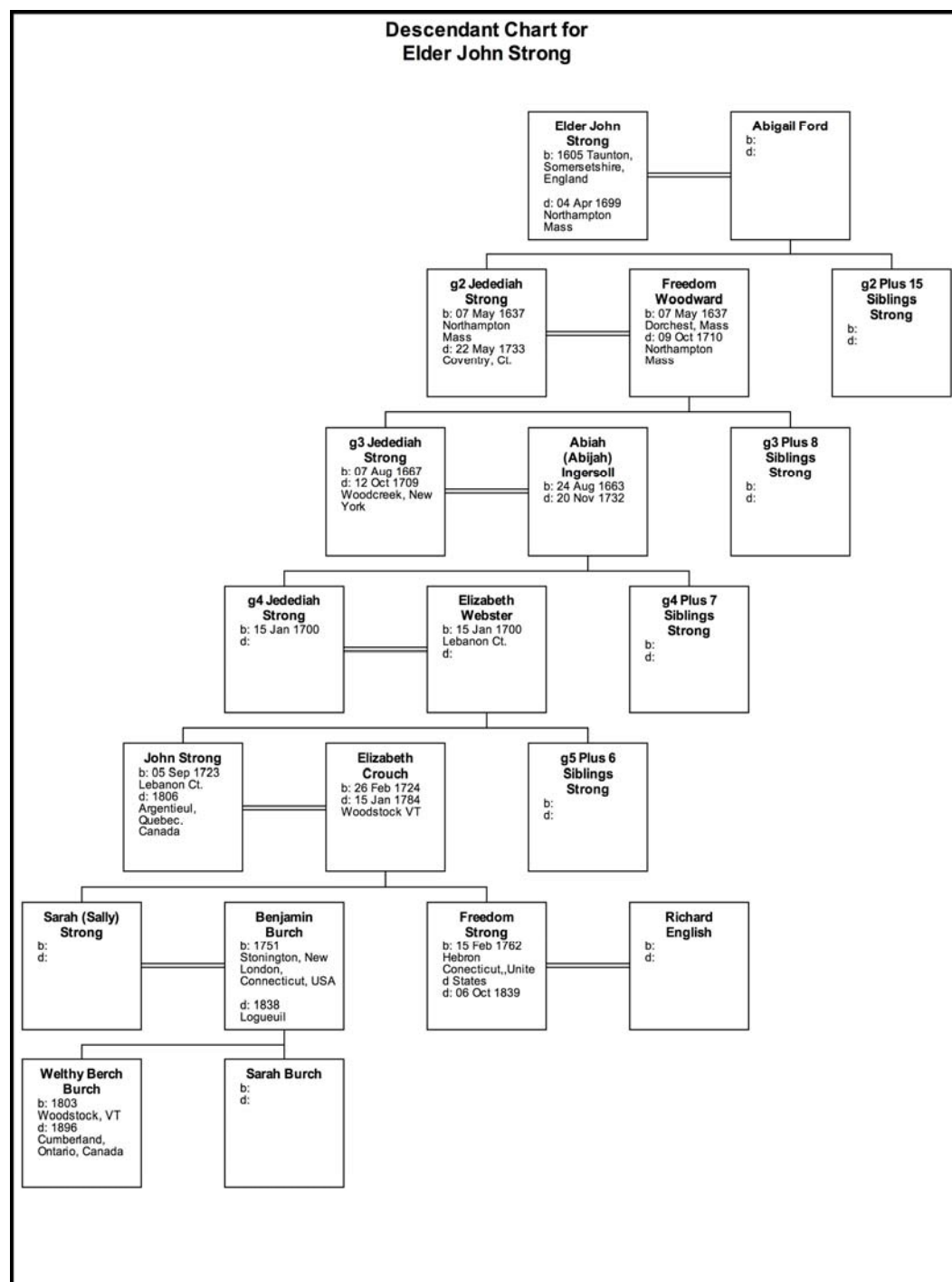
I have produced a family tree including the direct descendants of John Strong (1605/1699). To keep things simple I have shown names for the direct descendants connecting to Capt. John Strong (1723/1806), his daughters Sally Strong and Freedom Strong and his grand daughters Sarah Burch and Welthy Bertch. I have shown the main spouse of each person when it is known and have omitted the names of the wives if not applicable to the direct descent. I have shown the siblings as a group and list them below with their direct line parents.

GENERATION	DIRECT LINE	CHILDREN
g1	Elder John Strong m. Abigail Ford	John, Thomas, Jedediah , Josiah, Return, Ebenezer, Abigail, Elizabeth. Experience, Samuel, Joseph, Mary, Sarah, Hester, Thankful & Jerijah
g2	Jedediah Strong m. Freedom Woodward	Elizabeth, Abigail, Jedediah , Ford, Unnamed, Hannah, Thankful, John, Lydia, Mary, Experience, Preserved, John, Mary
g3	Jedediah Strong m. Abijaj Ingersol	Azariah, Stephen, Eleazer, Supply, Jedediah , Ezra, Freedom
g4	Jedediah Strong m. Elizabeth Webster	John Strong-1723-1804 , David, Elizabeth Jedediah, Solomon, Elijah, Benajah
g5	John Strong m. Elizabeth Crouch	" Sally Strong, Freedom Strong "What children he had beyond these two is unknown to the author" B.W. Dwight
g6	Sally Strong m. Benjamin Burch	Minerva, Benjamin, Elliot, Sarah Burch (1796-18__) , Welthy Bertch (1803- 1896)

The main sources of my information is the two volume book by B. W. Dwight " The History of the Descendants of Elder John Strong" (chiefly on pages 19, 769, 840 & 841)

History of Woodstock VT, History of Hartford VT, Proceedings of the Council of the Colony of CT., the Barbour Collection of CT vital stats, History of Argenteuil Quebec and Prescott ON.

Family trees have contained so many errors and omissions, that I have read many and have ignored most. Record keeping , particularly of the female side, is not complete so there are mistakes. Examples are my two female ancestors Sarah Burch and Welthy Bertch, who were both born after their listed mother died. I do not know whether they are children of Benjamin Burch and Sarah Strong or from some other portion of the combined Burch/Strong household. Second or third spouses are possible or illegitimate births from the reputedly large household or some other connection. Burchs and Strongs from this family did not seem to respond to rules or requests. Was there a reason?



John Strong(1605-1699) was born in Taunton, Somersetshire, England. His father (Richard) and his grandfather both died before John left England. A movement to populate the colonies of America produced a Puritan organization to move upwards of 30 shiploads of settlers . The first of these ships was the William and Mary which arrived in Nantasket May 30,1630. Family tradition is that John arrived at this time, but It may be that John made the first trip by himself and returned to England to make the second trip westward with his first wife and 2 sons a year or two later. He married his second wife in 1635 or 1636. His locations were Dorchester MA., Windsor CT, Northampton CT. where he died April 14, 1699 .

John was a tanner at Northampton MA. and Windsor CT, and was active in the church of the day, Meeting houses were built in each settlement with the subsidization by the Colonial Governor in Council. John

Strong was one of the first founders of the congregation in Northampton, MA. and was considered a pillar of the church. This was later recognized by making John Strong the ruling elder of the church on June 24, 1663 and he is differentiated from other John Strong's being called "Elder John Strong"

In 1637 his second wife bore him a son "Jedediah"

Jedediah Strong (1637 - 1733) Born in Northampton MA. He was a farmer in Northampton until 1709 when he moved with his family to Coventry CT where he remained until his death in 1733. In 1710 he was going to Coventry CT. to visit his children. He was riding a horse with his wife riding (on a pillion behind her husband)

when the horse slipped on smooth flat rocks in a ford at S Headly Falls CT. The horse's fall killed Jedediah's third wife and he was a widower for 23 years until his death at age 96 years.

In 1767 his first wife bore him a son "Jedediah"

Jedediah Strong (1667- 1709) He was a farmer at Northampton Mass. until 1696 when he moved to Lebanon CT. At that time there were only 4 four white families in the settlement. He was killed by Indians at Wood Creek New York, Oct 12, 1709.

See page 768 of "Descendants of Elder John Strong" for the touching text of a letter he wrote to a son Stephen on July 17, 1709.

In 1700 his wife bore him a son "Jedediah"

Jedediah Strong (1700-) He was a farmer at Lebanon CT. and moved to Hartford VT with several of his sons to become original settlers at Hartford VT. This settlement was originally considered as a grant in Hampshire, but that was disputed by the Province of New York. Settlement of the dispute finally resulted in Hartford becoming part of the state of Vermont. During this period Elijah and Benajah Strong were employed in surveying townships west of the Connecticut and when they realized the advantages of the area became early settlers of Hartford and attracted many of their friends from Lebanon CT. including their brother John Strong

In 1723 his wife bore him a son "John Strong"

John Strong (1723- 1804) He was born in Lebanon and married Elizabeth Crouch there on Dec. 26, 1744. I have no details for this John Strong until 1768 when he was offered 60 acres of land if he would build a grist mill and saw mill on Gun Brook. This land was voted to him on May 15, 1771. John Strong reportedly farmed at Hartford VT. from 1769 - 1772 but also acted as town clerk and surveyor for Hartford. With his son-in-law Benjamin Burch (1751-1836) he moved to Woodstock VT. where they were amongst the original settlers. They built a large house where their substantial sized family lived and operated the first Tavern in Woodstock. From 1775 to 1789 he held many elective offices and served as Captain of a militia unit in the war of independence.

Capt. John Strong's name appears many times in the annals of the War of Independence with several occasions when he led a troop of Milita to check on situations around Lake Champlain. He was delegated for many duties including watching the Tory Suspects, keeping the young men involved in productive activities and a leading position in the activities of the local Meeting House (church or chapel)

See History of Woodstock by Dana, Chapter XXIV, Page 423 to 452 for the story of the Episcopal and congregational churches of Woodstock VT in its unity and divisions from 1774 to 1800. *Of note from minutes of a meeting dated Sept 3, 1774; among the members of Mr. Hutchinson's Church were Mr. & Mrs John Strong and Joab Hoisington and his wife Mary (nee Boardman). Later John married Mary (widow Hoisington), The foregoing shows Mrs. John Strong (Elizabeth Crouch) was alive in 1774 See also page 22 following for comments on relationship of John Strong and his son-in-law Benjamin Burch.*

In 1804 Capt John, his second wife and his Burch grandchildren left Woodstock and moved north to Argenteuil Quebec where they settled on the north shore of the Ottawa River. After two years John died and was shortly followed by his wife.

(Continued on page 10)

(Continued from page 9)

Sarah (Sally) Strong (1764 1786) No solid birth or death dates are available

Sarah (Sally) Burch (1796-1868) Dates as reported on Canadian Census records

Welthy Burch/Bertch (1803/1896) Dates as reported on Canadian Census records

My goal is to make the connection of the last three names to the Strong /Burch/Byrnes/Windsor families. Criticism, corrections or hints are appreciated. JLB

PROVINCE ANNOUNCES FUNDS TO DIGITIZE HISTORY

As published on the Government of Saskatchewan website, Mar 31, 2011

Officials from the Ministry of Education have joined with library leaders to announce funding for the Saskatchewan Multitype Digitization Initiative. This initiative will lead to the digitization of historical and cultural materials from across the province and ensure they are easily accessible for students, researchers and the general public.

"This is an exciting opportunity to bring a number of valuable literary items to the public, perhaps for the first time," Education Minister Donna Harpauer said. "The ministry is pleased to be working with the University of Saskatchewan on this important project. Their knowledge and experience will help us create an accessible and convenient place online where Saskatchewan's historical and cultural content can be discovered."

Currently, Saskatchewan libraries, archives and museums have historical and cultural collections that may be inaccessible due to their physical location or being too fragile for public handling. Materials that are already available online must be accessed through separate, individual websites. The Digitization Initiative will allow information providers, as well as educational and cultural heritage institutions, to digitize their heritage and culture materials and make them available online.

The University Library at the University of Saskatchewan is a major collaborator on the provincial Saskatchewan Multitype Digitization Initiative.

"We are very excited to be undertaking this major digitization project," University Library Dean Vicki Williamson said. "This will be an invaluable research tool. We are pleased that the expertise of our library faculty and staff will be helping to enhance access to prairie history for the people of Saskatchewan and beyond."

The Ministry of Education will provide \$400,000 up front, with an additional \$275,000 budgeted for each of the following fiscal years to bring Saskatchewan culture and history online. This project will improve the knowledge of Saskatchewan's heritage, including First Nations and Métis people, by providing access to a wealth of special collections and primary documents and materials that support the K-12 curriculum, Treaty education, as well as distance education.

For more information, contact:

Ryan Mulatz
Education
Regina
Phone: 306-787-6026
Email: Ryan.Mulatz@gov.sk.ca

Ken Ladd
University Library, University of Saskatchewan
Saskatoon
Phone: 306-966-5946

Sharing Files with Dropbox

From Eastman's Online Genealogy Newsletter, by Dick Eastman

Sending files by email works well for millions of computer owners. However, what do you do if the file is too large for email? A few days ago, I wrote about one possible solution - http://blog.eogn.com/eastmans_online_genealogy/2011/12/transfer-big-files.html. Indeed, that solution works well and I recommend it for sending files to someone else that does not have Dropbox installed and perhaps does not possess the technical knowledge to install and configure Dropbox.

However, millions of computer users do have Dropbox installed, as it is a great file backup and copying program. Most people use it to only share files amongst computers they own, such as copying files from a desktop computer to one's own laptop system or perhaps from the office computer to a home computer.

However, Dropbox also has many other uses.

If you want to send one file or even thousands of files to someone else who already has Dropbox installed, there's an easy way to do so. In fact, that person might also update the files and all the new files will be copied to your system(s). I find Dropbox is a great method of sharing genealogy databases with cousins, as long as we are all using the same genealogy program on our Windows or Macintosh systems. I also use it to share family photographs with other relatives who are interested. Hopefully, they will add their own scanned photos to the same shared folder which results in copies of those photos being transferred to my computer.

Macworld Video has created a two-minute video tutorial that shows how to share files with another Dropbox user. It shows how to use Dropbox's free software and cloud storage service. Dropbox also offers extra paid storage, an iOS app, and full folder syncing between Dropbox users.

The video is written for Macintosh users but Dropbox is about 99% the same on Windows and about 98% the same on Linux. Any Dropbox user should be able to watch this video and then apply the information to his or her own system, regardless of the operating system.

You can watch the Sharing Files with Dropbox video at <http://youtube/NqbBgo96QYw>.

Editor's Comment: Dropbox is a free online storage site and is wonderful for backing up of data, which, of course, we all know that we need to do. Once you have it installed, Dropbox will appear as a directory, or file folder, on your Windows File Explorer. It has many uses but as the writer mentions, it is an excellent tool for genealogists. Although the writer suggests that technical knowledge is required, it is a relatively easy application to install and use, assuming that one has basic computer knowledge. Dropbox may be obtained at www.dropbox.com. If you have any questions regarding Dropbox or how to use it, feel free to contact me at bonnie.lymer@shaw.ca.

Saskatchewan Probate Records Indexing

The indexing of the Saskatchewan Probate Records is ready to go. Could you please register at FamilySearch.org for a FamilySearch account. Log into FamilySearch.org, click the "Sign In" link at the top right-hand corner. When the new window loads, scroll down the page to "Create New Account." Create your account then please forward your username and e-mail address to SGS. We will then forward it to [FamilySearch](http://FamilySearch.org) and you will be contacted by one of the team for instructions.

For those of you who have an account, please forward your username and e-mail address only.

If you have any questions please do not hesitate to call me.

Linda Dunsmore-Porter

Executive Director

Saskatchewan Genealogical Society

Ed.sgs@sasktel.net

SBSGS Member Recognized

By Bonnie Lymer

Our own Peter Geres received some well deserved recognition recently in a Star-Phoenix article about seniors in the city and their contributions in our community.

As most of you probably know, Peter has been our branch greeter for many years. Peter is always greets members with a smile (and encourages us to purchase 50/50 tickets for the monthly draws).

The Star-Phoenix article in October said the following about Peter:



"Physical fitness for Peter Geres takes many different forms: dancing, gardening, repairing, caring for others, staying mentally active and learning new skills and information. He started Sunday afternoon dance classes at Saskatoon's Aden Bowman Collegiate for the Mandarin Heritage Language School teachers, and then moved on to a new group of students at Bethel United Church. He has volunteered with resident outings and assisted with evening recreation programs, ensuring that all residents get a chance to dance at a local long-term care facility. For the last few years, Peter has grown tomato plants that he shares with the residents and staff at this facility, to their great delight. He is a role model for all seniors and those of us only dreaming of being seniors."

It is easy to take Peter's role within our group for granted, but think how much we would miss having him at the table, waiting to greet us upon our arrival. Peter's face is always one of the first ones to be seen by visitors and new members. First impressions are important, and Peter definitely contributes to our group by ensuring that the first impression of the Branch is a good impression.

Congratulations, Peter!

Here is a tidbit from the Genealogy in Time newsletter

Canada - The University of British Columbia has put online a collection of historic small-town newspapers from across the province. The newspapers range from the Abbotsford Post to the Nelson Tribune and date from 1865 to 1924. This covers the early days of the province when the economy was primarily driven by mining, forestry and fishing. In total, some 24 newspapers spanning 45,000 pages are in the collection. The publications are fully text searchable and are free to access. Users can search by key word, date and newspaper title. This collection is well set up for genealogists tracing their ancestors. Individual pages from the collection can be downloaded as jpg files and complete newspapers can be downloaded in pdf format. Most of these digi-

News Highlights from the Federation of Family History Societies

Into the Mist:

Did you have an ancestor who sailed on the Empress of Ireland? Between 1906 and 1914 she crossed many times between England and Canada until she sank in 1914. If so you may be interested in a new book "Into the Mist".

"Into the Mist" by Anne Renaud is a new publication by Canadian Publishers Dundurn Press. The author tells the story of the Empress of Ireland, one of the fastest and most elegant liners of the Edwardian era to grace the waters of the Atlantic Ocean, and how, in the early morning of May 29, 1914, she came to rest on the bottom of the St. Lawrence River.

Remembered primarily for sinking in only 14 minutes and for having a greater loss of passenger life than the Titanic, the Empress's true legacy is the significant role she played in the building of Canada. More than 115,000 hopeful immigrants who left Europe to build new lives on Canadian soil sailed on her.

Search for Crewmen:

Do you have an ancestor who was a World War I pilot? If so you may be able to help the Royal Aero Club to complete its archive. The archive includes over 28,000 records and 13,000 photographs but unfortunately Volume 4 is missing. Most pilots were initially trained by the Royal Aero Club and when they successfully passed they were given an Aviator's Certificate which needed 2 photographs - one was used in the certificate and one was kept by the Club. It is the photographs from the certificates that the club is hoping to trace. If you have one of the missing photographs please email the Royal Aero Club. You can also check the names of the pilots whose photographs are missing at Ancestry.

The National Burial Index (NBI) for England and Wales:

The National Burial Index (NBI) is a database of entries recorded in English and Welsh burials registers - parish, nonconformist, Roman Catholic, Quaker and cemetery.

Coverage is incomplete, but over 18.4 million records are included in the third edition, covering 1538-2008. The NBI also incorporates those records previously published of which many have since been checked and corrected. Millions of these records will not be found on any website.

For detailed information of the project and coverage <http://www.ffhs.org.uk/projects/nbi/nbi-v3.php>

To order a copy of The National Burial Index please visit FFHS Services Ltd.

Life Expectancy In Earlier Centuries

From the October 11, 2011 LostCousins Newsletter

A recent article in Significance, the magazine of the Royal Statistical Society, highlights the difference between life expectancy at birth and the age to which adults could reasonably hope to live.

In 1911 life expectancy at birth in England was a mere 52 years for men, and 55 years for women - but the primary reason these figures are so low (by modern standards) was the high rate of infant mortality. As the article points out, a man who reached the age of 40 could expect to live to 68, whilst a woman of the same age might live to 70. Going back to 1841, the year of the first census, a man of 40 could expect to live to 67 and a woman of 40 to 68 - yet life expectancy at birth was only 40 years for boys and 42 years for girls.

These and many more figures can be found in a spreadsheet that you can download from the website of the Office of National Statistics, and which covers the period from 1841-2002 at roughly 10 year intervals. I should stress that these were projections prepared at the time and based on past experience, so it's likely that people actually lived even longer than predicted.

<http://www.ons.gov.uk/ons/rel/lifetables/decennial-life-tables/no-16--2000-2002-/period-expectations-of-life-from-english-life-tables--nos--1-to-15.xls>

NEW MATERIAL IN THE SASKATOON BRANCH SGS LIBRARY

ON/LEEDS/GREN N 22	NEWS AND VIEWS. Leeds and Grenville Branch 2009 - October/November/December
CAN F .113	FAMILY CHRONICLE. The Magazine For Families Researching Their Roots. 2011-July/August,Sept./Oct
OTTAWA/ON 07	THE OTTAWA GENEALOGIST. A Publication of the Ottawa Branch OGS 2011-Vol.44-No.3.
MAN M 514.14	MENNONITE HISTORIAN. Published by the Mennonite Heritage Centre and the Centre for MB studies in Canada 2011 - Vol. XXXVII - No.2.
ONT F 1.139	Families OGS Newsletter 2011 Volume 50, No. 3
ONT O 71.19	OGS NEWSLEAF. 2011 - Volume 41, No.3
PERTH/COU/ON P 3	PERTH COUNTY PROFILES. Newsletter of the Perth Branch OGS 2011 - Vol.29, No.3
SASKATOON SASK A 18	ARMCHAIR GENEALOGIST. Saskatoon Branch SGS Newsletter 2011- Issue 65
SK U 1118.03	UKRAINIAN CANADIAN CONGRESS, SASKATCHEWAN PROVINCIAL COUNCIL BICHUK/VISNYK. 2011 VOL. XXV, No 1.
EURO/EE E 119	EAST EUROPEAN GENEALOGIST. 2011 - Vol. 19 No.3.
REG N 15	NOW AND THEN. Newsletter Regina Branch of SGS 2011 - Vol 29 - No.2.
USA/GEN F 6	FAMILY TREE MAGAZINE F&W Publications, Inc. Cincinnati, Ohio. 2011-Vol.12, Issue 5,6
SK SGS S 1900.98	SASKATCHEWAN GENEALOGICAL SOCIETY SEMINAR SYLLABUS 2011 Annual Symposium. Saskatoon Branch SGS Beyond The Basics
ALTA N 19	NORWEGIAN SETTLERS IN ALBERTA Jan Harold Brunvan. Canadian Centre for Folk Studies. Paper No. 8. 1974
GB/SCOT S 11	SCOTS KITH AND KIN AND ILLUSTRATED MAP. Revised Second Edition
GEN N 161.5	NON-PROFIT ORGANIZATIONS Information for charities, clubs and community groups.
GEN M 8	MY HERITAGE - FAMILY TREE BUILDER EXCEPTIONAL GENEALOGY SOFTWARE New Version 5.0 2011
Durhairi/ON K 19	KINDRED SPIRITS. Durham Region Branch OGS Whitby, Ontario. 2011 - Vol. XXX Issue 3.
HURON COUNTY ON HUR R 1	ROOTING AROUND HURON. The Huron County Branch OGS. 2011 - Vol. 32, No.3.
MAN M 514.14	MENNONITE HISTORIAN. Published by the Mennonite Heritage Centre and the Centre for MB studies in Canada 2011 - vol. xxxvii, No.3.
Quarterly REG N 15	NOW AND THEN. Newsletter Reg.Lna Branch of SGS 2011 - Vol. 29 - No.3.
USA/GEN F 6	FAMILY TREE MAGAZINE F&W Publications, Inc. Cincinnati, Ohio. 2011-Vol.12, Issue 7.
EURO/EE E 119	EAST EUROPEAN GENEALOGIST. 2011 - Vol. 19 No.4.
SK SGS S 1971.9	SGS CONNECTION BI-ANNUAL NEWSLETTER TO SGS BRANCHES. 2011 - Volume 14, No.1.
SK SGS R 3	R.C.M.P.Obituary Index 1933-1989
COUNTY/MAYO C 13	COUNTY MAYO CHRONICLES 1988 #1 TO 1995 #32
EURO/GER G 22	GALIZIEN VILLAGE FAMILY BOOKS ON CD 2005 - January
USA/IOWA H 8	HAWKEYE HERITAGE. A Quarterly Publication of the Iowa Genealogical Society 1985 - Vol. 20. Issue 2 1989 - Vol. 24. Issue 2 1991 - Vol. 26. Issue 1 1993 - Vol. 28. Issue 3, 1995 - Vol. 30. Issue 2
NEW HAMPSHIRE/US G 15	IA GENEALOGIST. Official Journal of American-Canadian Genealogical Society. Manchester, New Hampshire 1997 - Issue 71-Vol. 23, #1 1997 - Issue 72-Vol. 23, #2 1997 - Issue 73-Vol. 23, S3 1997 - Issue 74-Vol. 23, #4
OHIO/USA O 18	THE REPORT. The Ohio Genealogical Society 1992 - Vol. 32 - No.3, 1993 - Vol. 33 - No.2,3 1995 - Vol. 35 - No.A, 1996 - vol. 36 - No.2
COLORADO/USA C 7	THE COLORADO GENEALOGIST. The Colorado Genealogical Society. Denver, Colorado. 1983 - 1984
OTTAWA/ON O 7	THE OTTAWA GENEALOGIST 2012-Vol.45-No.1