

15915

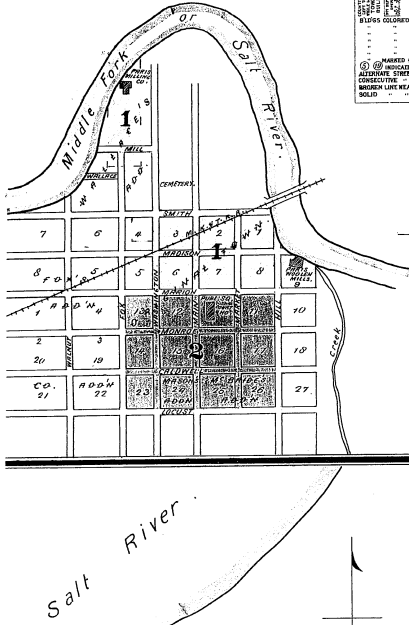
KEY

(Symbol)	FOR MEL GUM AIR ROOF
(Symbol)	WOODEN ROOF
(Symbol)	FRAME PARTITION
(Symbol)	SPACERS IN WINDOWS
(Symbol)	WINDOWS - SHUTTERS
(Symbol)	STABLE
(Symbol)	WINDOWS IN STREET
(Symbol)	2 1/4 2 1/4"

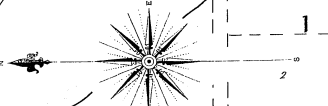
STEPS COLOURED YELLOW ARE PAINTED
 RED - BRICK
 BLUE - STONE
 GREY - BRICK
 BROWN - BRICK
 BLACK - BRICK

(Symbol) MARKED CO. ARE LIGHT COLOURED
 (Symbol) MARKED CO. ARE DARK COLOURED
 ALTERNATE STREET NOS ARE ACTUAL
 CONSECUTIVE
 BRICKEN LINE NEAR END OF WOOD CORNICE
 ROAD

NOTE.
 Water Facilities, as well as systems distributed all over town.
 Fire Report, no manholes.
 1 inch pipe, 1/2 inch pipe, 3/4 inch pipe
 2 1/4 inch pipe, 1 1/2 inch pipe.

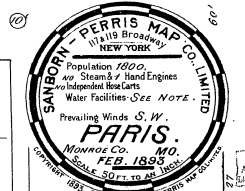


Salt River (Middle Branch)

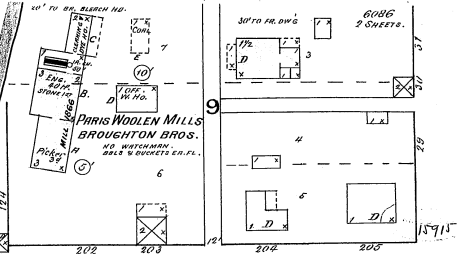


PARIS MILLING CO.
 Cap. 200 Bbls. per day.
 NO WATCHMAN. HEAT. STORE IN WAREHOUSE ON THE SOUTH SIDE OF MILL.
 (See note on MILL) WATER WHEEL 100 H.P. WATER. WATER WHEEL 80 H.P. WATER.
 WINDMILL 100 H.P. WATER. WINDMILL 100 H.P. WATER.
 WINDMILL 100 H.P. WATER. WINDMILL 100 H.P. WATER.
 WINDMILL 100 H.P. WATER. WINDMILL 100 H.P. WATER.

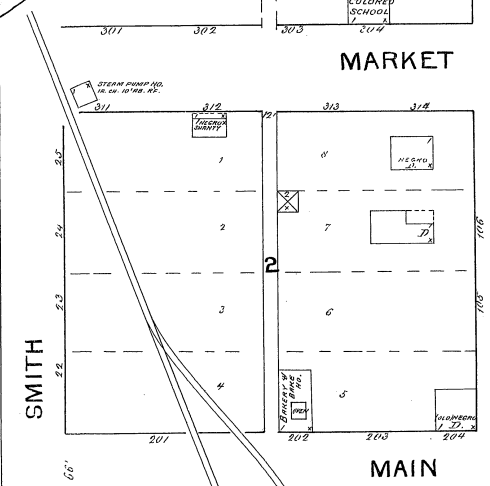
Machinery - See 1. CUMM. SHELLS.
 2. 5 H.P. W. BRASS ROLLERS.
 3. 2 H.P. STONE 1/2 FEET PROFILES.
 4. 2 H.P. STONE 1/2 FEET PROFILES.
 5. 2 H.P. STONE 1/2 FEET PROFILES.
 6. 2 H.P. STONE 1/2 FEET PROFILES.
 7. 2 H.P. STONE 1/2 FEET PROFILES.
 8. 2 H.P. STONE 1/2 FEET PROFILES.



I
 increased sheet complete.

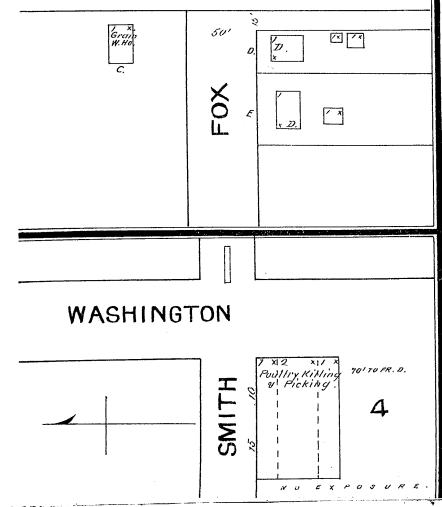


HILL



MARKET

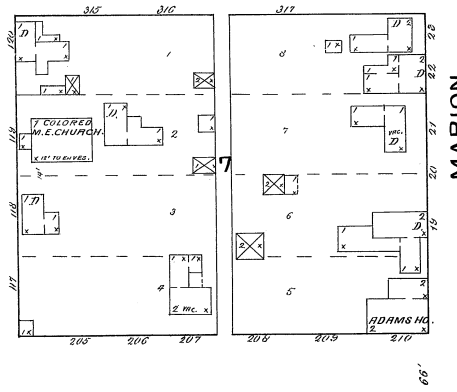
MAIN



FOX

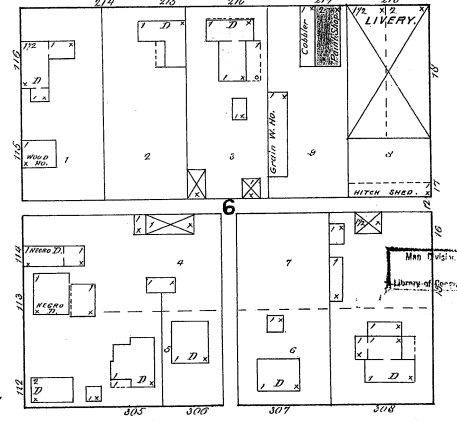
WASHINGTON

SMITH

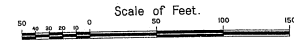


MADISON

MARION



WASHINGTON



J.E.P. FEB. 1893