



# HOOSIER POET



# THE HOOSIER POET

JUNE, 1944

VOLUME FIFTEEN

*Published by*

THE SENIOR CLASS

JAMES WHITCOMB RILEY HIGH SCHOOL

SOUTH BEND, INDIANA

## THE JAMES WHITCOMB RILEY HIGH SCHOOL



Built in 1923-24, the school was opened in January, 1924 to receive its first classes. The original building consisted of all the present structure except the northeast wing, the girls gym and the second and third floors of the northwest wing.

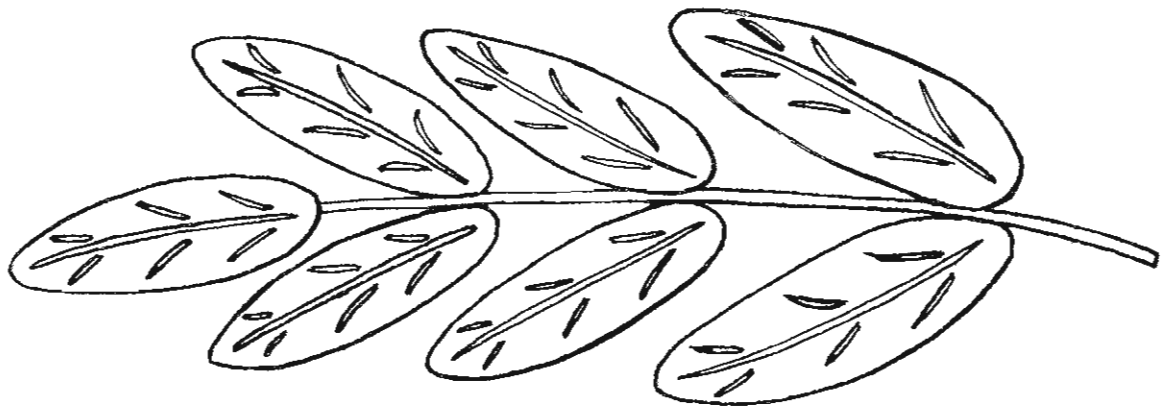
Known as the Southeast Junior High when built, the name was changed to Riley Junior-Senior High School on October 11, 1926. Mr. F. O. Schoepel, now principal of Washington High School, was the first principal. The first graduation class of exactly 100 members left Riley in 1931.

## *Dedication . . . .*

Twelve graduates of this school, one a faculty member, have given their lives in the war this country is now engaged in. They have made a supreme sacrifice, greater than any we, who remain at home to fight, will ever be called upon to make.

Time will engrave a memorial for them far greater than the humble one we make in dedicating this book to their memory. They are gone. We remain. We loved them. They were worthy of it.

We honor and revere them now. But years hence, the generations of Americans yet unborn will exclaim: "Look! They so loved their country that they laid down their lives for it. They were the Great and the Fearless. They were our Fathers. They were Men!"



SECOND LIEUTENANT  
KENNETH L. BELL '40  
*North Africa*



FLIGHT OFFICER  
NATHANIAL G. EARLY '41  
*Tunisia*



AVIATION CADET  
EUGENE W. FISHER '40  
*Plane crash, Childress, Texas*



FLIGHT OFFICER  
IVAN G. FULWIDER '38  
*Plane crash, Buckingham Field, Fla.*



PRIVATE  
CARL GERARD '40  
*Italy*



SERGEANT  
CORTLUND R. GOOD '32  
*Hospital, North Africa*



LIEUTENANT  
K. NORRIS HARSHBERGER '40  
*Europe*



PRIVATE F. C.  
ROBERT J. MILLER '37  
*Japanese prison camp, Philippines*



CORPORAL  
FORREST THOMPSON '31  
*Fort Sill, Oklahoma*



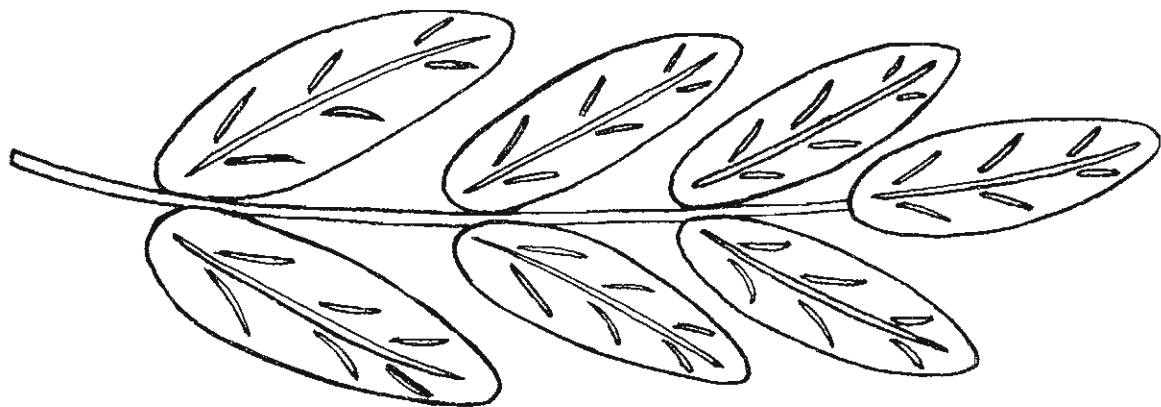
FIRST LIEUTENANT  
LOWELL R. TOELLE '38  
*South Pacific Area*



CAPTAIN  
THOMAS J. WEBSTER '36  
*Guadalcanal*



FIRST LIEUTENANT  
FRANK H. WOLTMAN '36  
*Europe*



*In Memory . . . .*



MISS EDNA BORG

The loss of Miss Borg, whose death occurred during the Christmas holidays, grieved all of us at Riley. An able teacher, whose chief interest was in the boys and girls she taught, her name will live long in the memory of those who knew her.

## RILEY'S WAR EFFORT

Early in this school year it was evident that the students at Riley were determined to better the enviable record they made the previous year in support of the War Effort.

At that time a goal of \$20,000 in War Bonds and Stamps was more than doubled. Early in September the student committee in charge of the sale met to determine a quota for the year. Unable to arrive at one themselves they decided to call the student body together and discuss it. It didn't take long to decide that if a quota of \$20,000 last year could be doubled, this year's quota should be at least \$50,000 and that figure was accepted. Organization was completed with the appointment of Bond Captains in each room and the sale was on.

The tempo of buying increased month by month and shortly after holidays it was evident that the quota would not only be reached but surpassed. In February 98.7 percent of the student body bought bonds or stamps, while in March it rose to 99.1 per cent. During that month, Riley lead all schools in the city in percentage of students buying; a record to be justly proud of.

The red letter day for the school, as far as Bonds and Stamps were concerned, came on April 20 when in a special assembly Riley received it's "School's at War Flag." P. D. Pointer, principal of Central High School presented the flag, Mr. Kropf receiving it for Riley. Perhaps the proudest ones in the assembly were Annabelle King, student chairman of sales, her assistant Eddie Jordanich, and Miss Steele, faculty adviser.

The drive to salvage tin, carried on so successfully last year, was not repeated this year because the present method of salvaging is working so successfully in the city. So the school turned to paper, and three salvage drives were carried on. The first two—in October



and early December—were only starters for the big campaign put on in early February. Every room was organized by the scrap committee of Neil Silvers, Rosemary Craven, and Leta Clark under the direction of Mr. Rhodes. Paper and magazines poured in until room 117, the salvage room, was literally filled. Mr. Rhodes, faculty member of the committee, estimated that over 400,000 pounds of paper was salvaged in three drives. In all drives Miss Proud's eighth grade room captured honors each time by bringing in the most paper and magazines.

In addition to these efforts the students of Riley rallied nobly to the War Chest and Red Cross drive for funds. Many rooms more than doubled their quotas, all showing a willingness to sacrifice from personal enjoyments to contribute to these two great causes.







GLENN S. KROPF  
Principal

## CLASS HONORS



JULIA KAPLON  
Valedictorian



ANNA BELLE KING  
Valedictorian



MARGARET CLARKE  
Salutatorian



GALEN SARGENT  
Third Honors

(Tied for Honors)

## HONOR ROLL

Average of 90% or better (In alphabetical order)

Joan Baker  
Alice Beyer  
Margaret J. Clarke  
Leta Clark  
Alice Duncan  
Jean Hazelton  
Julia Kaplon  
Mary Ellen Keyes  
Anna Belle King  
Ruth Ann Lehman  
Joan Malia  
Gale Merrick  
Mary Palatin  
Louis Reynolds  
Galen E. Sargent  
Dorothy E. Smith  
Norma J. Steinhilber  
Robert Stavroff  
Robert Swantz  
Donald Travis  
Joseph Voorhees  
Betty Jane Wazney  
Donna Lou Wilson



DALE BARKLEY	JEAN BON DURANT	HELEN BOTCHKAI	LORRAINE BOWLBY
MADOLON BURMEISTER	BEVERLY BURNS	RUTH CALAHAN	DONALD CHENOWITH
JOHN COLSON	GEORGE CONKLIN	HENRY F. CORIDAN	MARILYN CROTHERS

Jan. *R* 1944

DALE BARKLEY, Intramural Sports, Glee Club, Latin Club; JEAN BON DURANT, Drama Club, Hi-Times Staff, Glee Club, Band, Student Council, Stage Club; HELEN BOTCHKAI, Basketball, Gym Review, Dancing Club, Red Cross, Student Council, Glee Club; LORRAINE BOWLBY, Latin Club, Red Cross, Crib Girl, Cafeteria.

MADOLON BURMEISTER, Band 2 sem., G.A.A. 6 sem., Drama Club 2 sem.; BEVERLY BURNS, Jr. Red Cross, Dance Club, Hi-Times Staff, Hi-Times Press Club; RUTH CALAHAN, Ushers Club; DONALD CHENOWITH.

JOHN COLSON, Intramural Sports, Jr. Drama Club, Airplane Club, Screen Club; GEORGE CONKLIN, Sketch Club, Learn-to-Dance Club, Intramural Basketball; HENRY F. CORIDAN, Vice-President Hi-Y, Student Flower Fnd Co-Chairman, Choral Reading, Stamp Lieutenant; MARILYN CROTHERS, Girls Intramural, Sponsor President, Sponsor Secretary III, Jr. Silver Pin, Glee Club, Hi-Times Representative.



JEANETTE DANIELS  
MARJORIE GOODSPEED  
BUD HOBBS

RUTH LEE EMBERTON  
JOHN GUISENGER  
DORIS HORNE

MIRIAM FITCH  
EILEEN HAWBAKER  
ROBERT HUDSON

JOAN RUTH FOSTER  
LLOYD HEISER  
BEATRICE JONES

Jan. *R* 1944

JEANETTE DANIELS, Basketball, Jr. Red Cross; RUTH LEE EMBERTON, Jr. Red Cross, Ushers Club; MIRIAM FITCH, Glee Club, Drama Club, Student Council Medal, Assistant Business Manager Hi-Times, "Mrs. Miniver," "Ten Minutes By The Clock"; JOAN RUTH FOSTER, Band, Orchestra, Glee Club, "From War to War," "Court of King Arthur," Senior Silver Scholarship Pin.

MARJORIE GOODSPEED, Girl Reserve Banquet, Service Club; JOHN GUISENGER; EILEEN HAWBAKER, Hi-Times Staff, Drama Club, Latin Club, Student Council; LLOYD HEISER, Rod and Gun Club, Basketball.

BUD HOBBS, Mgr. Basketball, Mgr. Football; DORIS HORNE, Band, President Sponsor Room 16th, Girl's Intra-mural; ROBERT HUDSON, Hi-Y Member, Freshman Track; BEATRICE JONES, Drama Club, Latin Club, "Stage Door," "Mrs. Miniver," Home Room President 12B, Gym Exhibition.



MERLYN DEAN KANTZ  
 MARILYN LAMPHERE  
 MARTIN A. LYVERS

NORMAN KOPEC  
 LA JOY LARKINS  
 ROBERT MANN

ANN KOVATCH  
 VIOLET LAWSON  
 RUTH MARIE McCLURE

GEORGE S. KOVATCH  
 LAWRENCE LEHMAN  
 DON MEEK

Jan. *R* 1944

MERLYN DEAN KANTZ, Latin Club; NORMAN KOPEC, Jr. Rotarian, Hi-Y President, Debate Team; ANN KOVATCH, Girl Reserve, Sec'y of Sponsor Room, Majorette for Band; GEORGE S. KOVATCH, President of Senior Class, Football 3 Years; Co-Captain Final Year; President of Home Room 12A.

MARILYN LAMPHERE, Student Council; LA JOY LARKINS; VIOLET LAWSON, Spanish Club, Drama Club, "Mrs. Miniver," "Stage Door"; LAWRENCE LEHMAN, Band, Orchestra, Vice-Pres. Band, Vice-Pres. Home Room.

MARTIN A. LYVERS, Learn-to-Dance Club, Interamural; ROBERT MANN, Band, Orchestra, Latin Club, Treas. Band; RUTH MARIE McCLURE, G.A.A., Jr. Red Cross, Softball, Basketball; DON MEEK, Hobby Club, Golf, Rod and Gun Club, Intramural Basketball.



HELEN MIHOLICK	EUGENE MOCK	LAURENE MORRIS	ERVIN NOWICKI
EUNICE LOUISE OLUND	LOIS HELEN OSENBURG	DONALD OVERTON	HELEN PENNELL
JEAN PLACE	RICHARD PYLE	HELEN RAISSE	DONALD RICHNER

Jan. *R* 1944

HELEN MIHOLICK, Drama Club, Glee Club, G.A.A., "Stage Door," "Babauska," Tennis; EUGENE MOCK, Drama Club, Spotters Club, Glee Club, Public Speaking; LAURENE MORRIS, G.A.A., Latin Club; ERVIN NOWICKI, Printing Club, Stage Club, Model Airplane, Intramural.

EUNICE LOUISE OLUND, Hi-Times Press Club, Drama Club, G.A.A., Latin Club; LOIS HELEN OSENBURG, Hi-Times Staff, Latin Club, Sec. Home Room; DON OVERTON, Hi-Y, Latin Club, Intramural; HELEN PENNELL, Glee Club, Learn-to-Dance Club, Knitting Club, Jr. Glee Club.

JEAN PLACE, Hi-Times Staff, Band, Orchestra, State Math Contests; Glee Club; RICHARD PYLE, Color Guard in Band, Learn-to-Dance Club, Rod and Gun Club, Intramural Sports; HELEN RAISSE, Hi-Times Staff, Glee Club, Pres. of G.A.A., Band, Music Club; DON RICHNER, Orchestra, Screen Club.



VIVIAN LOUISE ROWLEY  
 NANCY SRIVER  
 ANNE TAMBURINI

P. WILLIAM RUTH  
 JOHN C. STULL  
 GENEVA WAGENER

CALISTA SNYDER  
 JO ANN SUTHERLAND  
 NORMA WALTER

CLEM SNYDER  
 BETTY TAMASI  
 WAYNE WELCOME

Jan. *R* 1944

VIVIAN LOUISE ROWLEY. Drama Club, Spanish Club, "From War to War," "The Pot Boiler," Jr. Red Cross; P. WILLIAM RUTH, Football, Track, Jr. Home Room Pres.; CALISTA SNYDER, Student Council, Glee Club, Sub Deb Club, Knitting Club, Penmanship. CLEM SYNDER, Football, Basketball, Track, Athletic Club, Airplane Club.

NANCY SRIVER, Learn-to-Dance Club, Singing Club, Study Club, Jr. Red Cross; JOHN C. STULL, Band; JO ANN SUTHERLAND, Girls Intramural, Student Council, Red Cross Representative, Penmanship Club, Girl Reserves, Spanish Club; BETTY TAMASI, Pep Squad, Glee Club.

ANNE TAMBURINI, Glee Club, War Stamp Committee; GENEVA WAGENER, Band, Orchestra, Glee Club, Senior Pins, Spanish Club, "From War to War"; NORMA WALTER, Sub Deb, Knitting Club, G.A.A., Jr. Red Cross, Jr. Glee Club; WAYNE WELCOME. Band, Glee Club, H-Y, Stage Club, Intramural Sports, Gym Exhibition.



PAUL LeROY WILLIAMS  
 CLARIS E. ALTIC  
 ROBERT K. AXELBERG

MARY E. WILLMARTH  
 DOROTHY ANDERSON  
 JOAN RUTH BAKER

RUTH WILSON  
 ROSEMARY F. ANDERT  
 CLYPHANE BARRETT

GEORGE A. ALDRICH  
 BETTY PEARL ASHMAN  
 JEAN BATCHELOR

June *R* 1944

PAUL LeROY WILLIAMS, Golf Team, Screen Club; MARY E. WILLMARTH, Study Club, French Club, G.A.A.; RUTH WILSON, Glee Club, Drama Club, Latin Club; (End of January Section); GEORGE A. ALDRICH, Hi-Y, Hi-Times Advertising Staff.

CLARIS E. ALTIC, Varsity Golf I and II, Pres. Home Room 10B-11A, Vice-Pres. Home Room 9B, Sec.-Treas. Home Room 9A, Hoosier Poet, Army Air Corps Reserve; DOROTHY ANDERSON, Pres. Home Room 10B and 10A, Glee Club, "Dream Waltz," "The Medici," Latin Club, Secy. of War Stamp and Bond Committee, Editor of Hoosier Poet; ROSEMARY F. ANDERT, Vice-Pres. Library Club 10A, G.A.A.; BETTY PEARL ASHMAN, Glee Club, "Medici" and "King Arthur's Court." Student Council 10th and 11th Grades.

ROBERT K. AXELBERG, Vice-Pres. Sponsor Room 12A, Hi-Y, Hi-Times Captain; JOAN RUTH BAKER, Glee Club, Latin Club, Secy.-Treas. Home Room 9th; CLYPHANE BARRETT, Girl Reserves, Knitting Club, Glee Club, Table Tennis Club, JEAN BATCHELOR, Student Council, Main Office, Switchboard 11th and 12th





THOMAS L. BAYLESS  
ALICE MARIE BEYER  
DOROTHY BRAHLICK

BARRY BEREBITSKY  
FLORENCE A. BOARMAN  
EUGENE BRANDENBURG

ANNE BERLAKOVICH  
HOWARD BOLIN  
FRANK J. BRAUN

ELSYE A. BERZAI  
EDWIN V. BOTTORFF  
JOYCE MAY BROADHURST

## June *R* 1944

THOMAS L. BAYLESS, Screen Club, Spanish Club, Airplane Spotters Club, Stamp Representative, Hoosier Pool Photographer; BARRY BEREBITSKY, Student Council, Basketball, Spanish; ANNE BERLAKOVICH, "From War to War," Study Club; ELSYE A. BERZAI, Intramural Basketball.

ALICE MARIE BEYER, Vice-Pres. Home Room 12B, Glee Club, Hi-Times, Press Club, Attendance Office; FLORENCE ANN BOARMAN, Latin Club, Girl Reserves, Horizon Club; Student Council 9B and 9A; HOWARD BOLIN, Varsity Football, Varsity Baseball, Air Raid Wardeu; EDWIN BOTTORFF, Screen Club, Airplane Club.

DOROTHY BRAHLICK, Learn-to-Dance Club, Sec. of Home Room 10A, Hi-Times Captain 12B; EUGENE EARL BRANDENBURG, Glee Club; FRANK J. BRAUN, Screen Club; JOYCE MAY BROADHURST, Pres. of Home Room 9th and 10th, Knitting Club, Cub Reporter.



NADINE BROOKS	DONALD BROWNBRIDGE	ROBERT L. CHIDISTER	KATHERINE CHRISLE
LETA G. CLARK	MARGARET JEAN CLARKE	ANNE CLEMENTS	JEAN L. COLLIER
ROSEMARY A. CRAVEN	JAMES CRESSY	CARL L. CROWEL	MARGARET CURRAN

June *R* 1944

NADINE BROOKS, Major in Business; DONALD R. BROWNBRIDGE, Intramural Award 1940, Vice-Pres. Home Room 10th, Checker Club, Chess Club, ROBERT L. CHIDISTER, Football, Baseball, Glee Club, Gun Club, Airplane Spotters Club; KATHERINE CHRISLE, Orchestra, Scrap Representative, Red Cross Representative.

LETA G. CLARK, "Mystery at Greenfingers," Senior Bronze and Senior Silver Pin, Pres. Home Room 11A, Pres. Latin Club III and IV., Treas. G.A.A., Band; MARGARET JEAN CLARKE, "The Medici," Pres. Home Room 10B, Treas. Home Room 12A, Latin Club, Glee Club, G.A.A.; ANNE CLEMENTS, Editor-in-Chief of Hi-Times; JEAN L. COLLIER, Glee Club.

ROSEMARY A. CRAVEN, Glee Club, "Court of King Arthur," "Waltz Dream." Treas. of Scrap Committee, War Stamp Representative; JAMES CRESSY, Pres. Home Room; CARL L. CROWEL, Vice-Pres. Home Room; MARGARET CURRAN, Stamp and Bond Representative.



BETTY M. DANNER  
CHARLES DE VREESE  
MARGARET DURBIN

BARBARA L. DAVIS  
DONALD DICE  
MELVIN B. EBERSOLD

MARCELLA JANE DAVIS  
ALICE LOUISE DUNCAN  
BETTY LOU ENYEART

DAVID CARTER DeGROSS  
ROBERT W. DUNFEE  
JEANNE E. ERHARDT

June *R* 1944

BETTY DANNER, Latin Club, Hi-Times Captain; BARBARA L. DAVIS, Glee Club, New Student 1943, Art Exhibit Club, Music Club, Hi-Times Staff; MARCELLA JANE DAVIS, English History; DAVID CARTER DeGROSS, Band, Orchestra, Hi-Y, Spanish Club, Photographer.

CHARLES DE VREESE, Senior Football Mgr., Sec. Home Room, Navy Air Corps, Glee Club; DONALD DICE, Football, Army Air Corps, Air Spotters Club; ALICE LOUISE DUNCAN, "Mrs. Miniver," Softball, Basketball, Drama Club, G.A.A., Cheer Leader III and IV; ROBERT WARREN DUNFEE, Sec. of Senior Class, Vice-Pres. of Drama Club, Hoosier Poet Staff, Hi-Y, Student Council.

MARGARET DURBIN, Hi-Times, Learn-to-Dance Club, Jr. Red Cross; MELVIN B. EBERSOLD, Band, Jr. High Debate, Airplane Club, Third Place Winner Speech Club; BETTY LOU ENYEART, Bowling, Basketball, Sewing Club, Red Cross Club; JEANNE ELAINE ERHARDT, Winner Jr. High Speech Contest, Vice-Pres. Home Room 12th, Orchestra, Hoosier Poet Staff, International Relations Representative, Band.



JEANETTE ESLINGER  
 JACK DEAN GEARHART  
 GEORGE W. GLASS

SHIRLEY FOWLER  
 CHARLOTTE M. GILBERT  
 MADELINE GRIFFITH

ROBERT B. FRANCIS  
 LEONARD G. GILLIGAN  
 IDA GLADYS GYENGE

RICHARD D. FRITZ  
 PAUL E. GILMAN  
 PHYLLIS J. HAND

June *R* 1944

JEANETTE ESLINGER, Glee Club, Girl Reserves; SHIRLEY FOWLER, Hi-Times Captain, Knitting Club, Study Club; ROBERT B. FRANCIS, Baseball, Drama Club, Glee Club, T. B. Board, Hi-Y, Army Air Corps; RICHARD D. FRITZ, Color Guard for Band, Bowling Team, War Stamp Captain, Screen Club.

JACK DEAN GEARHART, Sec'y Home Room; CHARLOTTE MAE GILBERT, Latin Club, Service Notes Editor Hi-Times, Horizon Club, Jr. T. B. League 1942; LEONARD G. GILLIGAN, Band, Glee Club, Hi-Y, Tennis Team, Orchestra; PAUL E. GILMAN, War Stamp Representative.

GEORGE W. GLASS, Ushers Club, Scrap Club, Hi-Times Captain; MADELINE GRIFFITH; IDA GLADYS GYENGE, Jr. Red Cross Representative, Main Office, Intramural Captain; PHYLLIS J. HAND, Sec. Home Room, Girl Reserves, Knitting Club.



HARRIETTE E. HARMON  
ERWIN E. HERITZ  
JACK E. HOLLISTER

ALBERT D. HARTMAN  
RUTH A. HERTEL  
BETTY R. HORVATH

JEAN HAZELTON  
WILLIAM B. HICKS  
DONALD P. HUSVAR

BETTY HEDL  
MARY RUTH HOCK  
JEANETTE JERZAKOWSKI

June *R* 1944

HARRIETTE E. HARMON, Glee Club, Girl Reserves, Knitting Club, Study Club; ALBERT D. HARTMAN, Band, Orchestra, Vice-Pres. Home Room; JEAN HAZELTON, Home Room Officer, Sketch Club, Latin Club; BETTY HEDL, Student Council, Red Cross Club, Knitting Club.

ERWIN H. HERITZ, Intramural Basketball, Track Team; RUTH A. HERTEL, Knitting Club, Study Club, Glee Club; WILLIAM B. HICKS, Majors: Shop and Math.; MARY RUTH HOCK, Main Office, Hoosier Poet Staff, Glee Club, "Waltz Dream," "The Medici."

JACK E. HOLLISTER, Band; BETTY R. HORVATH, T. E. Stamp Salesman, Knitting Club, Study Club; DONALD P. HUSVAR, Varsity Football, Varsity Basketball, Varsity Baseball, Pres. of Sponsor Room in 10th Grade; JEANETTE JERZAKOWSKI, Singing Club, Music Club, Glee Club.



ALVIN P. JOHNSON  
RUTH MARIE JOHNSON  
IRENE KESZEI

WILLIAM JOHNSON  
JULIA KAPLON  
MARY ELLEN KEYES

FLORENCE JOHNSON  
ELYSE A. KEGLOVICH  
ANNA BELLE KING

HELEN JOHNSON  
EDGAR KEPPLER  
NETTIE KLAWINSKI

June *R* 1944

ALVIN P. JOHNSON; WILLIAM JOHNSON, Majors: Mathematics and Science; FLORENCE JOHNSON, Home Room Pres. in Sophomore Year, Student Council Representative, "From War to War," War Council, Latin Club; HELEN JOHNSON, Learn-to-Dance Club, Basketball, Sub Deb Club, Glee Club, Tennis.

RUTH MARIE JOHNSON, "King Arthur's Court," Table Tennis Club, Singing Club, Glee Club; JULIA KAPLON, Red Cross Representative, Class Party Committee, Christmas Program, Student Council, Librarian, Colonial Staff; ELYSE A. KEGLOVICH, Intramural Basketball, Senior Swimming Meet; EDGAR KEPPLER, Screen Club.

IRENE KESZEI, Treas. of Girl Reserves, Intramural Basketball, G.A.A.; MARY ELLEN KEYES, Winner of Jr. Group of Patrons of Poetry Contest, "Stage Door," Pres. of 11A Sponsor Room, Hi-Times Literary Editor, Senior Bronze Pin, G.A.A.; ANNA BELLE KING, Sec.-Treas. of Drama Club, Student Chairman of War Stamps and Bond Sales, D.A.R. Citizenship Award, "Lady of Letters," Student Director of "Mrs. Miniver," Senior Bronze Pin; NETTIE KLAWINSKI, Hi-Times Typist, Music Club.



MIRIAM KLINGERMAN  
 IRENE KUZMIC  
 RUTH ANN LEHMAN

DORIS KOPP  
 MARY KUZMITS  
 JOYCE LETNER

ROBERT KOSANOVICH  
 MATILDA R. KUZMITS  
 HERBERT A. LEWIS, JR.

JACK KUHL  
 MARIE LAUNER  
 MILDRED LOUKS

June *R* 1944

MIRIAM KLINGERMAN, Entered from Tyner, Ind., Glee Club (there), Intramural Basketball (there), Baseball; DORIS KOPP, Learn-to-Dance Club, Glee Club; BOB KOSANOVICH, Airplane Club, Camera Club; JACK KUHL, Band, Pres. of Junior Hi-Y, Checker Club, Intramural Sports.

IRENE KUZMIC, Hi-Times Exchange Editor, Sponsor Room President, Pres. Glee Club, "From War to War," "Waltz Dream," "The Medici"; MARY KUZMITS, Learn-to-Dance Club, Hi-Times typist; MATILDA R. KUZMITS, Learn-to-Dance Club, Girl Reserves; MARIE LAUNER, Learn-to-Dance Club, Commercial Course, Girl Reserves, Glee Club.

RUTH ANN LEHMAN, Bronze Pin Award, Commercial Course, Orchestra, Glee Club; JOYCE LETNER, Commercial Course; HERBERT LEWIS, JR., Sec.-Treas. of Junior Class, Captain of Track Squad of '44, Hoosier Poet Staff, Speech Contests, Screen Club, "Stage Door"; MILDRED LOUKS, Majored in Art, Orchestra.



JACK LUKENS	ELIZABETH LOUISE LYON	CECELIA B. MADEFORD	WILLIAM W. MAGEE
JOAN MALIA	FERRELL MARTIN	MARILYNN M. MARTIN	RICHARD D. MAXWELL
NANCY ANN McCARTY	CHARLES McDANIEL	BETTY MEDICH	MILDRED MEDICH

June *R* 1944

JACK LUKENS, Photography Club, Airplane Club; ELIZABETH LOUISE LYON, Scrap Representative, Spanish Club Play, Spanish Club; CECELIA B. MADEFORD, Learn-to-Dance Club, Junior High Debates, "From War to War," Latin Club, Glee Club, Hi-Times; WILLIAM W. MAGEE, Treas. of Junior Hi-Y, Learn-to-Dance Club, Art Club, Band.

JOAN MALIA, Sec. of Eleventh Grade Sponsor Room, Student Council, Latin Club, Glee Club; FERRELL MARTIN, Worked in Nurse's Office; MARILYNN M. MARTIN, Hoosier Poet Circulation Staff, French Club; RICHARD DEPROU MAXWELL, Drama Club, Orchestra, Glee Club, "The Medici," "Waltz Dream."

NANCY ANN McCARTY, French Club, Hoosier Poet Circulation Staff; CHARLES McDANIEL, Varsity Football, Varsity Basketball, Majored in English and History, Pres. of Home Room in Senior Year; BETTY MEDICH, Commercial Course; MILDRED MEDICH, Intramural Basketball.





ROBERT C. MELL  
LOUIS MIHAJLOVICH  
MARTHA LOU MILLER

GALE MERRICK  
HARVEY B. MILLER  
JOAN MODLIN

WILLIAM METZGER  
KENNETH MILLER  
BEVERLY MORGAN

JAMES MICHAELS  
MARTHA JANE MILLER  
PAT MYERS

June *R* 1944

ROBERT C. MELL; GALE MERRICK, Scrap Drive Committee, "Mistress of the Inn," "From War to War," Sr. Drama Club, "Waltz Dream," Glee Club; WILLIAM METZGER, Majors: English, Math., and Science; Football Team; JAMES MICHAELS, Cross-Country Team.

LOUIS MIHAJLOVICH, Glee Club, Basketball (Senior Yr.), Football (Scph.-Senior Yr.), Baseball (Soph., Jr., and Senior Yr.), "From War to War," "King Arthur's Court"; HARVEY BRENTON MILLER, Cheer Leader, Varsity Baseball, Freshman Football, Pres. of Sponsor Room in II and IV, Treas. of Sponsor Room III; KENNETH MILLER, Hi-Y, Hoosier Poet Staff, Vice-Pres. of Home Room II, Sec.-Treas. of Home Room III; MARTHA JANE MILLER, Red Cross Representative Senior B.

MARTHA LOU MILLER, Hi-Times, Student Council, "War to War," Sec.-Treas. of Drama Club 1944, Scrap Committee 1942-43, Queen of Junior-Senior Dance; JOAN MODLIN, Glee Club 11th Grade, Major in Social Studies; BEVERLY MORGAN, Art Club, Music Club, Study Club, Hi-Times Captain 10th Grade, Sec.-Treas. 12th Grade, Majored in Commercial Courses and English; PAT MYERS, "Mrs. Miniver," "Mistress of the Inn," "From War to War," Spanish Club Play, Band and Orchestra, South Bend High School War Bond Queen.



SHIRLEY NELSON  
 BETTY LOU NUTTING  
 MARY PALATIN

WALTER NEMETH  
 GENE OAKLEY  
 ELINOR PARKS

MARY E. NICK  
 JAMES R. OWEN  
 RICHARD PAUL

LOUIS NOVAK  
 JOHN H. PABST  
 CHARLES PLANK

June *R* 1944

SHIRLEY NELSON, Band, Orchestra, G.A.A., Swimming Team, Hi-Times Staff, Hoosier Poet; WALTER NEMETH; MARY E. NICK, Singing Club 10th Grade, Red Cross Representative; LOUIS NOVAK, Varsity Football "B" Team Football.

BETTY LOU NUTTING, Glee Club, "The Medici," Majors: English, Business; GENE OAKLEY, Stamp and Coin Club, Vice-Pres. of Senior Home Room; JAMES R. OWEN, Hi-Y, Football, Baseball, Debate, "From War to War," Pres. and Vice-Pres. of Sponsor Room; JOHN H. PABST, Varsity Track, Varsity Basketball, Freshman Football, Varsity Cross-Country, Vice-Pres. of Sophomore Class, Vice-Pres. of Sponsor Room.

MARY PALATIN, Glee Club, Drama Club, G.A.A., Hoosier Poet Staff, "The Medici," Vice-Pres. of Senior Class; ELINOR PARKS, Glee Club, Hi-Times Staff, Learn-to-Dance Club, Pres. of Home Room 10th Grade, Majored in Business; RICHARD PAUL, Pres. of Rod and Reel Club, Played Varsity Football; CHARLES PLANK, Varsity Track (3 Yrs.), Varsity Cross-Country (3 Yrs.).



ELAINE POZNANSKI  
LEWIS RAY  
AGNES RIBARICH

ANN M. PRIKOSOVICH  
HERBERT REMINGTON  
LAWRENCE RICE

PATRICIA QUARLES  
JACK REPKE  
GENEVIEVE RICHARDSON

RODGER QUINLAN  
LOUIS M. REYNOLDS  
PAUL RICHARDSON

June *R* 1944

ELAINE POZNANSKI, Study Club, Singing Club, Band and Glee Club, Learn-to-Dance Club, Sub Deb Personality, War Stamp Captain in the 10A; ANN M. PRIKOSOVICH, Glee Club, Knitting Club, Dancing Club; PATRICIA QUARLES, Study Club, Singing Club, Hi-Times Captain, Home Room Secretary, Sub Deb Personality; Learn-to-Dance Club; RODGER QUINLAN.

LEWIS RAY, Junior Hi-Y, Airplane Club, Camera Club; HERBERT REMINGTON, Majored in Art, Member of Screen Club (6 semesters); JACK REPKE; LOUIS M. REYNOLDS, Band, Varsity Track, Hoosier Poet Staff, "Mistress of the Inn."

AGNES RIBARICH, Study Club, Hi-Times Captain, Red Cross Representative, Sec. of G.A.A., Sec. of Girl Reserves, Played Intramural Basketball; LAWRENCE RICE; GENEVIEVE RICHARDSON, Band (10 semester), Orchestra (4 semesters.) PAUL RICHARDSON, Band (10 sem.), Orchestra (4 sem.)



JAMES R. RIDDLE  
ELIZABETH L. RUGGIERI  
DONALD C. SCHRAW

MARY C. RIST  
ROBERT R. RUSH  
DONALD SCHULTHEIS

NORMA K. ROGERS  
GALEN E. SARGENT  
JAMES SEITZ

BETTY ROSEWICZ  
GORDON A. SAUER  
CORNELIA SHARFINSKI

June *R* 1944

JAMES R. RIDDLE, U. S. Army Air Corp; MARY C. RIST, Band (4 years), Basketball, Majored in Business Work; NORMA KATHRINE ROGERS, Sketch Club, Basketball, Swimming, Softball, Vice-Pres. of G.A.A. 11th Grade, Pres. of G.A.A. 12th Grade; BETTY ROSEWICZ, Glee Club, Latin Club, Sub Deb Personality Club, Majored in Commercial Courses and English, Christmas Seal Representative in 9th Grade.

ELIZABETH L. RUGGIERI, Library Club, Cub Reporter, "From War to War," Library Representative; ROBERT R. RUSH, Baseball, Basketball, Airplane Club, Rod and Gun Club, Pres. of Sponsor Room; GALEN EUGENE SARGENT, Hi-Y, Glee Club, Drama Club, "The Medici," "Mistress of the Inn"; GORDON A. SAUER, Entered from Marion, Ind., Varsity Basketball, Varsity Football, Hi-Y.

DONALD C. SCHRAW, Airplane Club, Learn-to-Dance Club; DONALD SCHULTHEIS, Hi-Y Officer, Varsity Debate, Drama Club, "From War to War," Defense Stamp Captain, Twin City Student Council; JAMES SEITZ, Golf Team (3 Yrs.); CORNELIA SHARFINSKI, Study Club, Singing Club, Sub Deb Club, Sec. Sponsor Room.



JOAN SHARPSTEIN  
HELEN LOUISE SMITH  
ROBERT STAVROFF

MERLE SHOCK  
JAMES SMITH  
CAROLYN STEELE

PETER SLATER  
BETTY ELLEN SOUDER  
BETTE M. STEFFEY

DOROTHY ELAINE SMITH  
GERTRUDE SPENCER  
NORMA J. STEINHILBER

June **R** 1944

JOAN SHARPSTEIN, Glee Club; MERLE SHOCK, Airplane Club, Learn-to-Dance Club; PETER SLATER, Learn-to-Dance Club, "B" Team Football, Vice-Pres. of Sophomore Class; DOROTHY ELAINE SMITH, Glee Club, Press Club, Chorus of "Waltz Dream," "From War to War," Editor of Third Page of Hi-Times, Treas. of Sponsor Room.

HELEN LOUISE SMITH, Played Basketball, Committee for Sophomore Party, Vice-Pres. of 9th Grade Sponsor Room; JAMES SMITH, Intramural Passball, Intramural Basketball, Intramural Gym Hockey, Pres. of Airplane Club; BETTY ELLEN SOUDER, Head Cheerleader, Band-Orchestra, Sec. of Sophomore Class, Glee Club, Drama Club; GERTRUDE SPENCER, Came from North Muskegon High School, North Muskegon, Mich., Girls' Basketball, Senior Drama Club (there), Student Council (there.)

ROBERT STAVROFF, Junior Class Pres., Hoosier Poet Sports, 9A Citizenship Medal, Junior and Senior Gold and Silver Scholarship Pins, State Algebra Contest; CAROLYN STEELE, G.A.A. Sec., Glee Club Librarian, "The Medici," Swimming Team, Girls' Basketball, Girls' Softball; BETTE M. STEFFEY, Student Council, Red Cross, Hoosier Poet Staff, Library Representative; NORMA JEAN STEINHILBER, Band, Orchestra, Majors: English, Commercial.



ROBERT SWANTZ	OSCAR SWATHWOOD, JR.	MARY A. TOMPOS	HARLEY DEAN TRANTER
DONALD TRAVIS	LOIS ULBRICHT	MARY J. URQUHART	HELEN M. VOGEL
LILLIAN EVA VOGEL	JOSEPH F. VOORHEES	SUSAN GENE WALKER	BETTY JANE WAZNEY

June *R* 1944

ROBERT SWANTZ, Hi-Y Pres., War Service Council, Varsity Basketball, Band President, Junior Rotarian, Bond and Stamp Chairman; OSCAR PETER SWATHWOOD, JR., Hi-Times Captain, Majors: English, Mathematics, Shop; MARY A. TOMPOS, G.A.A., Program Chairman Girl Reserves, Intramural Badminton, Intramural Basketball; HARLEY DEAN TRANTER, Hi-Times Captain, Varsity Track, Sponsor Room Treas., Hoosier Poet Advertising Manager.

DON TRAVIS, Entered from Waukesha High School, Waukesha, Wis., Hi-Times Reporter, Hi-Times Captain; LOIS ULBRICHT, Orchestra, Majors: Business, English; MARY JANE URQUHART, Hoosier Poet, Home Room Pres.; HELEN M. VOGEL, Capt. Girls' Basketball, Library Representative.

LILLIAN EVA VOGEL, Glee Club, Hi-Times Typist, Hoosier Poet, "From War to War," War Stamp Representative; JOSEPH F. VOORHEES, Drama Club, Glee Club, Vice-Pres. Latin Club, "Mistress of the Inn"; SUSAN GENE WALKER, Associate Editor of Hoosier Poet, Hi-Times Press Club, Newsbeat Editor Hi-Times, Debate Team Jr. Year, Girls' Tennis Team; BETTY JANE WAZNEY, Pres. Student Council, Pres. of Inter-City Student Council, Chairman of Senior Prom, Glee Club.



IANTHA OMEDA WEAVER  
ROSE M. WENSITS  
DONA LOU WILSON

ROGER WEAVER  
NORMA J. WHETSTONE  
GENE WILSON

LUCY LOU WEESNER  
MARILYN WHICKCAR  
CLAUDE GRANT WOLFE

JEANETTE I. WELLS  
BETTY LOU WHITEMAN  
BETTY G. WYATT

June *R* 1944

IANTHA OMEDA WEAVER, Entered from Tuckerman, Ark., in Senior Year, Class President (there), Drama Club (there), Quill and Scroll (there); ROGER WEAVER, Hi-Y Treas., Baseball, Senior Class Treas., V-5 Training; LUCY LOU WEESNER, G.A.A., Art Club; JEANETTE IRENE WELLS, Band, Orchestra.

ROSE M. WENSITS, Intramural Basketball, Learn-to-Dance Club; NORMA JEAN WHETSTONE, Glee Club, Majors: English, History, Social Studies; MARILYN WHICKCAR, Latin Club, Majors: English, Social Studies; BETTY LOU WHITEMAN, Sponsor Room Sec. and Treas., Latin Club, Knitting Club, Glee Club.

DONA LOU WILSON, Orchestra, Drama Club Pres., Pres. of Senior Class, Vice-Pres. of Glee Club, War Stamp Secretary; Production Manager "Mistress of the Inn"; GENE WILSON, Football, Hi-Y; CLAUDE GRANT WOLFE, Varsity Golf Team, Majors: English, Shop, Social Studies; BETTY GERALDINE WYATT, Latin Club, "From War to War."



GAYNELLE WYNN  
 JACK BLODGETT YOUNG  
 ALICE DEAN

GEORGE PETER YELICH  
 WILMA A. ZELLERS  
 ALFRED PETZKE

JAMES WILLIAM YODER  
 CATHERINE L. ZILKY  
 WANITA TURNER

ROBERT EDGAR YOUNGS  
 EUGENE BLIELER  
 EDDIE WOOD

June *R* 1944

GAYNELLE WYNN, French Club, Hi-Times Room Captain; GEORGE PETER YELICH, Baseball, Football; JAMES WILLIAM YODER, Majors: Machine Shop, English. Minors: History, Art; ROBERT EDGAR YOUNGS, Varsity Football.

JACK BLODGETT YOUNG, Student Council, Hi-Y, Learn-to-Dance; WILMA A. ZELLERS, Latin Club, Hoosier Poet Staff, Majors: Social Studies, English; CATHERINE L. ZILKY, French Club, Glee Club, Vice-Pres. of Sponsor Room; EUGENE BLIELER, Glee Club, "From War to War," Majors: English, Machine Shop.

ALICE DEAN, Glee Club, Jr. Red Cross, Secy. of Sponsor Room in 10th Grade, Learn-to-Dance Club; ALFRED PETZKE; WANITA TURNER, Orchestra, Second-page editor of Hi-Times; EDDIE WOOD, Jr. Hi-Y, Learn-to-Dance Club.





BETTY ARCH  
VADA MAE ENGDAHL  
HAZEL JAY PARRISH

BETTY JANE BLAIR  
RAYMOND A. GERVAIS  
LYLE HAROLD SCHANG

FRED J. DRAGAN  
CHARLES E. HAVERSTOCK  
DALE SMITH

ESTELLA DUFFY  
ROBERT E. HENRY  
JOHN F. SPALDING, JR.

June *R* 1944

BETTY ARCH; BETTY JANE BLAIR, Glee Club, Learn-to-Dance Club; FRED J. DRAGAN, Stamp Club; ESTELLA DUFFY, Girl Reserves.

VADA MAE ENGDAHL, Girl Reserves, Cub Reporter; RAYMOND A. GERVAIS, Screen Club, Sport Club, Track; CHARLES E. HAVERSTOCK, Screen Club; ROBERT E. HENRY, Vice-Pres. of Senior Sponsor Room, Glee Club.

HAZEL JAY PARRISH, Sewing Club Member; LYLE HAROLD SCHANG, Pres. of Screen Club; Hoosier Poet Staff; DALE SMITH, Sports Club, Rod and Reel Club; JOHN F. SPALDING, JR., Entered from Medford, Oregon.



RICHARD SWARTZ

FRANCES KACZMERICK

RICHARD THORMAN

RALPH STICKLEY

ROBERT SWARTZ, Football, Basketball, Track, Ticket Committee of Senior Prom; FRANCES KACZMERICK, Girls' Softball, Ushers Club, Red Cross, Secretary and Representative, Dancing Club and Glee Club; RICHARD THORMAN, On the Editorial Staff of The Hi-Times; RALPH STICKLEY, Football, Basketball, Track, Ticket Committee of Senior Prom.

June *R* 1944

NO PICTURES

Accelerated school programs have made it possible for some members of 12B and 11A classes to graduate in August of this year by attending summer school. Had the staff known in time, that their graduation was possible, their picture would have been included with the other seniors. Not knowing some were graduating, we regret the omission of their picture from this book. Again a few are omitted because they were camera shy.

We have made every effort to show separate groupings of the January seniors from the June and summer school ones. In a few instances we have not done this for reasons beyond our control. However, this need not be disturbing, since all are to be considered members of the class of 1944.

The following seems to be a correct list of those graduates whose pictures are not in this Hoosier Poet:

EUGENE BLILER  
 ALICE DEAN  
 JOHN HOWARD JACKSON  
 LOUIS KOLSZAR  
 ALFRED PETZKE  
 BETTY YELTON

GEORGE BUSKO  
 JAMES FRANCIS FELIX  
 ROY JOHNSON  
 ROBERT PARR  
 ALFRED RITTENHOUSE  
 EDDIE WOOD

The following, whose pictures are included in the senior section, are not graduating with the class of 1944. They will continue in school, and graduate in January.

LYLE SHANG  
 RAYMOND GERVAIS

## CLASS OFFICERS



George Kovatch  
President

Dona Lou Wilson  
President

Mary Palatin  
Vice-President

Robert Dunfee  
Secretary

Roger Weaver  
Treasurer

## CLASS SPONSORS

Grace Lushbaugh

Katharine Van Buskirk

Wilbur Campbell

Carl Schubert

Hildred Moss

George Koch

Bess Wyrick

Russell E. Rhodes

Dessie Coghlan

H. H. Ogden, Assistant Principal

Lawrence Pate, Head Counselor

## HOOSIER POET STAFF

EDITOR—Dorothy Anderson.

MANAGING EDITOR—Mary Ruth Hoek.

ASSOCIATE EDITORS—Lillian Vogel, Susan Walker, Betty Ashman, Don Schultheis, Mary Jane Urquhart, Norma Rogers, Irene Kuzmic.

SENIOR SECTION—Susan Walker, editor, Betty Steffy, Jeanne Erhardt, Kenneth Miller.

MUSIC—Irene Kuzmic, editor, Paul Richardson.

DRAMA—Betty Ashman, editor, Mary Palatin.

SPORTS—Don Schultheis, editor, Bob Stavroff.

FEATURES—Mary Jane Urquhart, editor, Leta Clark, Betty Stout.

ART—Norma Rogers, editor, Louis Reynolds, Bob Dunfee, Barbara Bair, Luella Hein, Ed. Harding.

CIRCULATION—Lillian Vogel, manager, Theresa Kuharick, Mary Hepler, Marilyn Martin, Leta Clark, Wilma Zellers, Omeada Weaver, Betty Wyatt.

ADVERTISING—Harley Tranter, manager, Joe Voorhees, Charles DeVreese, Martha Lou Miller, Leta Clark, Helen Smith, Dona Lou Wilson.

PHOTOGRAPHS—Tom Bayless, Lyle Schang.

TYPISTS—Wilma Zellers, manager, Helen Smith, Shirley Nelson, Beverly Morgan.

FACULTY ADVISOR—George Koch.

## GLEE CLUB



One of the finest organizations of the school, the Glee Club, has furthered its popularity to greater heights.

Under the superb guidance of Miss Kantzer, the club has participated in many school and city activities.

City activities included performing for the North Central Teacher's Association meeting; the Progress Club; Kiwanis Club; a WSBT Broadcast; and many luncheons and banquets.

Riley owes much to its fine Glee Club for their morale-building activities.

## GLEE CLUB



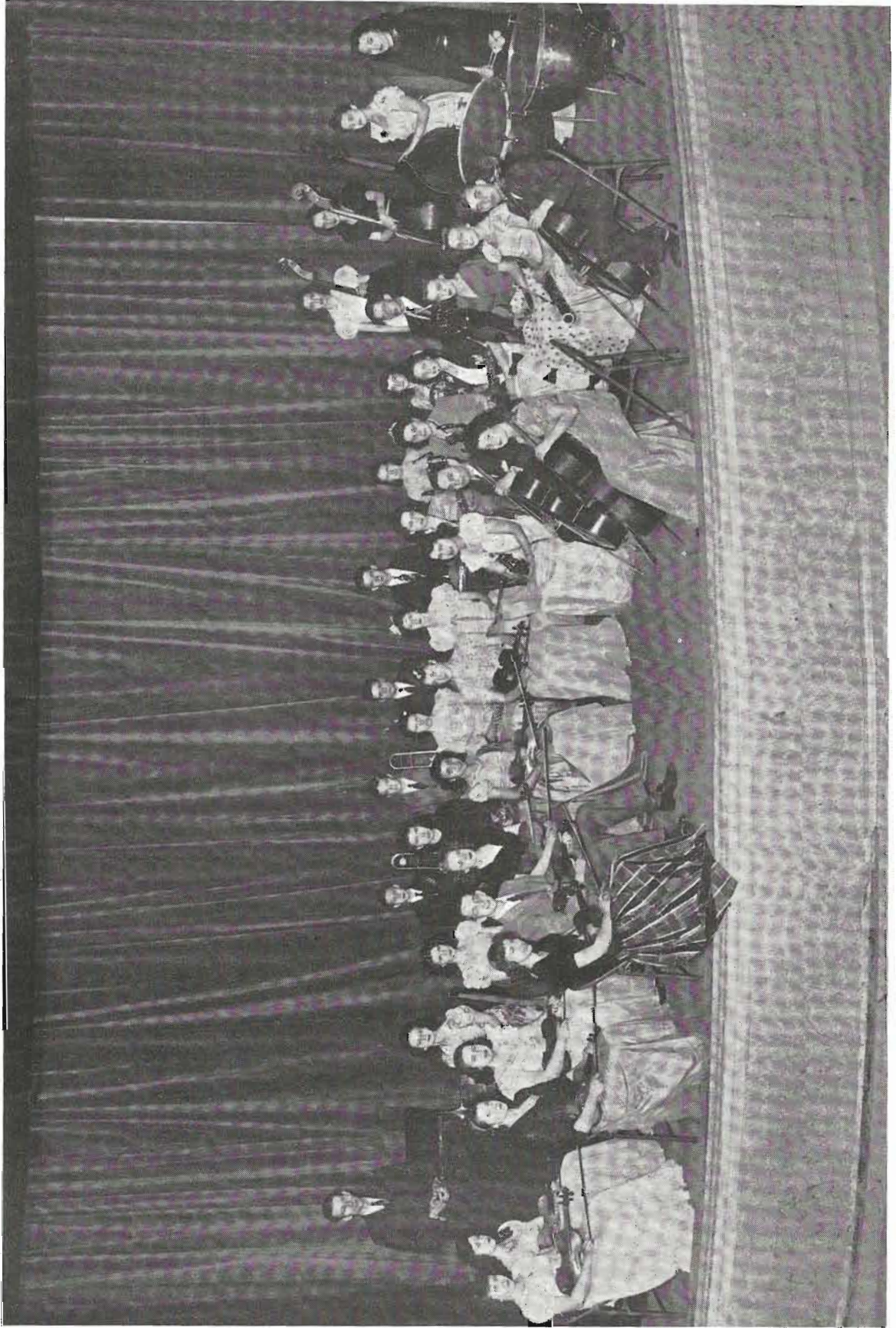
One of the finest organizations of the school, the Glee Club, has furthered its popularity to greater heights.

Under the superb guidance of Miss Kantzer, the club has participated in many school and city activities.

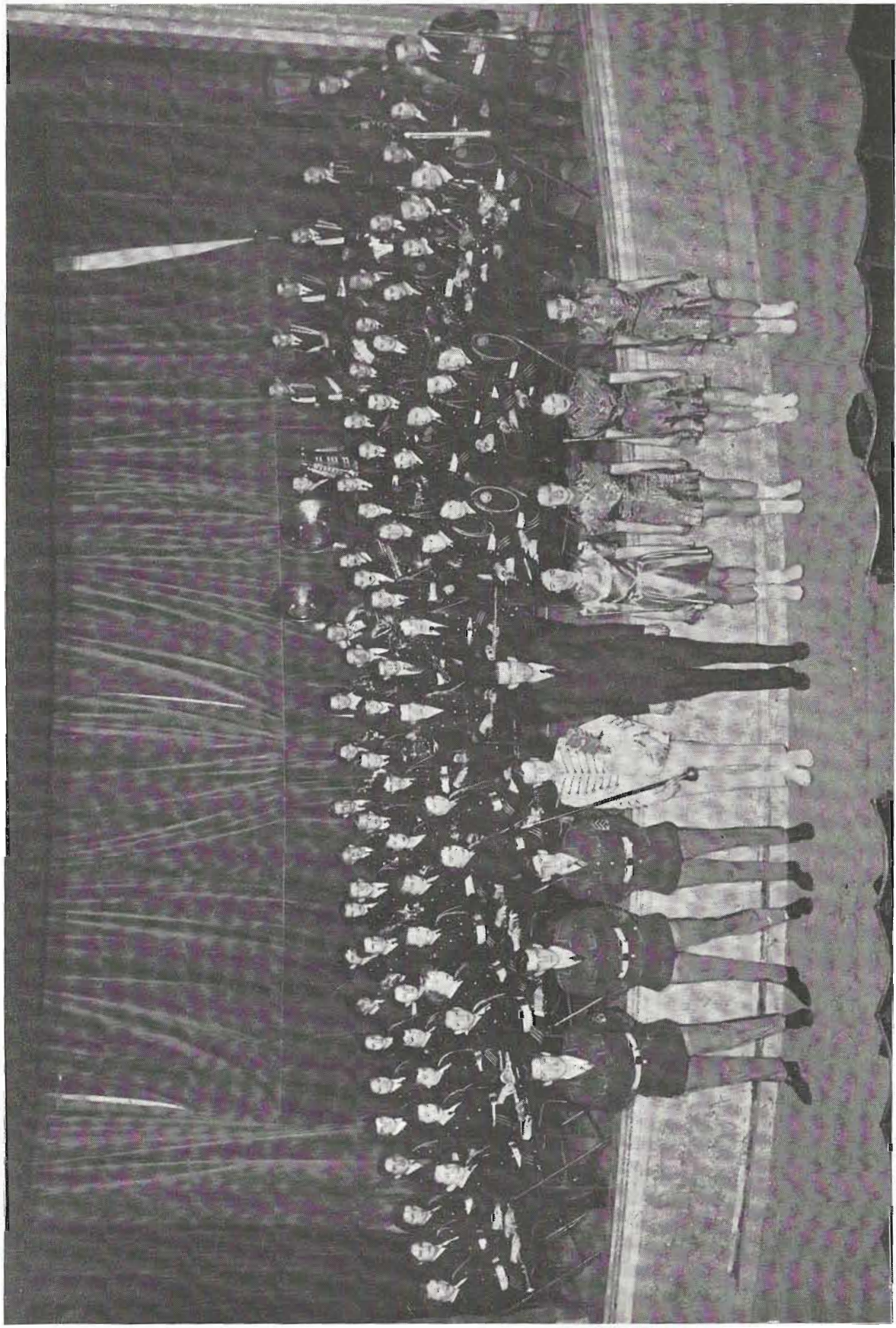
City activities included performing for the North Central Teacher's Association meeting; the Progress Club; Kiwanis Club; a WSBT Broadcast; and many luncheons and banquets.

Riley owes much to its fine Glee Club for their morale-building activities.

ORCHESTRA



BAND



## Glee Club Members

1st Alto: Carol Anderson, Dorothy Anderson, Betty Ashman, Jeanette Bowman, Mary Ann Bucher, Patsy Chapman, Jean Collier, Beverly Cripe, Alice Dean, Betty Dice, Ruth Ann Dreibelbis, Phyllis Duncan, Beverly Elick, Jerry Ewing, Norma Sally Fish, Jean Francis, Patricia Glasgow, Eleanor Hatfield, Adele Haymaker, Joan Japa, Betty Jernstrom, Jeanette Jerzakowski, Mary Jerzakowski, Charlotte Kristowski, Ruth Ann Lehman, Phyllis Lyvers, Joan Malia, Mary Montwheeler, Mary Nally, Genevieve Newman, Betty Nutting, Mary Parker, Elinor Parks, Patricia Phend, Violet Pokrite, Phyllis Schermier, Jo Ritta Schultheis, Velma Vevers, Louise Siddall, Joan Snyder, Marilyn Steele, Mary Taylor, Barbara Ann Teschke, Ruth Ann Torok, Mary Trulson, Marilyn Ulbricht, Lillian Vogel, Georgia Walker, Alberta Wentz, Norma Whetstone, Barbara Wuthrich, Nadine Zujpe.

2nd Soprano: Mary Jane Baer, Dolores Baker, Margaret Verg, Barbara Boch, Iva Mae Chidister, Rosemary Craven, Carolyn Davis, Jean Hays, Joan Hays, Marilyn Hill, Mary Ruth Hock, Irene Kuzmic, Sally Linderman, Joyce Lyons, Cecilia Madeford, Evelyn Malley, Mary McIntyre, Violet Medich, Anne Mossberg, Mary Palatin, Shirley Powell, Norma Rowe, Lois Sorrenson, Dona Lou Wilson.

Alto: Jean Clarke, Jeanette Eslinger, Patty Fisher, Shirley Frazier, Barbara Gable, Dorothy Geddes, Mary Gilchrist, Rosemary Hunter, June La Hommedieu, Marilyn Leusch, Phyllis McClure, Nancy Megan, Wanda Myers, Jean Poole, Jaon Reback, Alice Rothballer, Carolyn Stule, Thelman Wentzel, Betty Whiteman, Mary Whitmer, Joan Lindstett, Bernice Schultz.

2nd Alto: Betty Anderson, Joyce Brewer, Connie Buse, Marilyn Carroll, Phyllis Collier, Betty Ebersole, Carolyn Johnston, Millie Knege-  
vich, Pat McCaughan, Joyce Miller, Ruth Orton, Pat McHargue, Lucille Perkey, Elaine Poznanski, Rose Marie Tamburini, Marie Wazney, Pauline Wazney, Dorothy Wensits.

Tenor: William Andraae, John Bradfield, Tom Gurbick, Jane Francis Johnston, Richard Marquess, Corrine Pinkerton, Houston Ramsey, Betty Wazney.

Baritone: Robert Chidister, Robert Francis, Robert Mabry, Richard Maxwell.

Bass: Richard Barker, Kay Bristow, Kenneth Burden, Edward Duncan, Clifford Dunn, Paul Frazier, Leonard Gilligan, Ralph Hay, Robert Henry, Edward Jordanich, Gale Merrick, Don

McClure, James Parker, Bob Priebe, Eugene Sargent, Eugene Statzer, Norman Statzer, Joe Voorhees, Dick Wood, Dick Zimmer.

## Orchestra Members

Violin: Richard Maxwell, Wanita Turner, Vera Colson, Peggy Flowers, Mary Jane Baer, Jeanne Huss, Alberta Wintz, Mary Muckenfuss, John Manshow, Pat Keller, Dorothy Kopetcki, Pat Nye, Ruth Bates, Lois Ulbrecht. Viola: Joyce Vary, Barbara Patton. Cello: Marilyn Wintz, Virgil Henderson, Clifford Dunn. String Bass: Donna Lou Wilson, Jeanne Erhardt, Jerry Ewing. Flutes: Naomi Norman, Norma Steinhilber. Bassoon: Pat Holmes. Clarinet: Betty Rhodes, Shirley Nelson. E Flat Alto Saxophone: Phyllis House. B Flat Tenor Saxophone: Barbara Burr. French Horn: David DeGroff, Helen Black, Pat Fitch. Trumpet: Paul Richardson, Max Lauchner, Charles Smale, Russell Poole. Trombone: Jim Nelson. Piano: Ruth Lehman.

## Band Members

Trumpets: Richard Beatty, Max Lauchner, Paul Richardson, Ralph Hay, Jim Dorrenbacker, Bob Hine, Don Hoover, Elaine Poznanski, Russell Poole, Louis Reynolds, Charles Smale, Leonard Leffel, Jo Ann Takach, Louis Horn.

B Flat Clarinets: Betty Rhodes, Joan Campbell, Eugene Shank, Pat Pherson, Bob George, Pat Hoover, Lois Huntsberger, Ruth Heiby, Leslie Leviton, Beverly Marks, Delores Bockover, Phyllis Chidister, June Hardin, Grace Milovich, Lois Boelat, Elmer Brugh, Rose Gibson, Beverly Marshall, Beverly Rhine, Norman Seamon, Ruth Ann Torok, Jane Barnhart, Nancy Berg, Fonal Carl, Patty Gore, Jane Grimes, Shirley Nelson.

B Flat Bass Clarinets: Richard Bellaire, Ruby Bickle.

E Flat Alto Saxophone: Tom Halloran, Don Hunter, Pat Barrows, Pat Crabill, Phyllis House. B Flat Tenor Saxophone: Barbara Burr. Bassoon: Rosalie Jones, Pat Holmes. Baritone Saxophones: Delores Kessler. Flutes: Betty Lou Pinney, Glenna Maple, Naomi Norman, Norma Steinhilber, Marjorie Farrington. French Horns: Helen Black, Dean Conklin, Pat Fitch, David DeGroff. Trombones: Bob Swantz, Jim Nelson, Jeanne Huss, Dixie DeFreeuw, Joan Smith, Paul Troutman, Richard Ramhap. Baritone: Leta Clark; John Say. Bass: Eileen Brownbridge, Roy Johnson, Bill Hough.

Percussion: Pat Myers, John Unley, Marshall Rummell, Mary Taylor, Vic Cera, Ronald Krepis.



## "MEDICI"



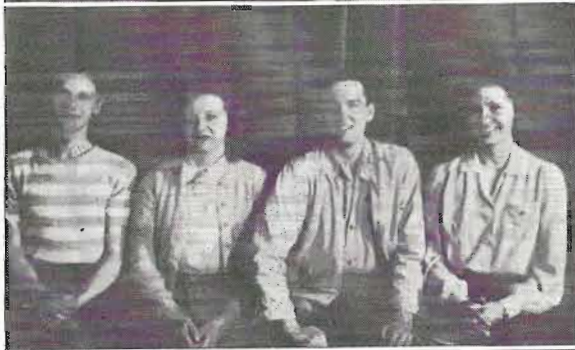
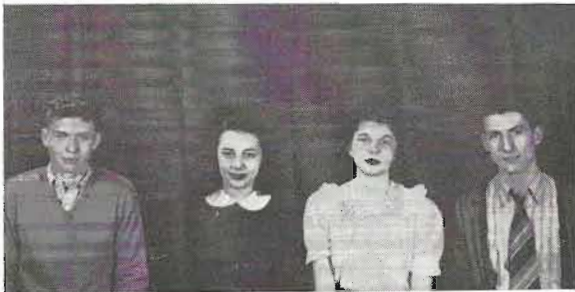
"Medici," the opera presented February 2-3-5 by the Riley High School Glee Club proved to be highly successful in all respects.

Music by Massinett, periodic scenery of the Italian Renaissance and colorful costumes blended into an effect that was an outstanding delight by all those who heard and saw. With all these surroundings, the performers, aided by Miss

Kantzer and Mr. Casady, gave forth their talent with musicianship, showmanship, and dramatic ability that was far developed by high school students.

The leads who took part in this performance were: Irene Kuzmic, Gene Nelson, Margaret Berg, Kay Bristow, Jim Parker, Richard Maxwell, Corrairie Pinkerton and Joyce Lyons.

## DRAMA CLUB



The Riley Senior Drama Club, under the direction and able sponsorship of Mr. James Lewis Casaday, this year has enjoyed one of its most glorious seasons. Total productions of this organization equaled three. First they presented "Mistress of The Inn"; next came "Babouscka"; and finally "Mystery at Green-fingers."

The roll call of the Drama Club, which meets every second Tuesday, totals fifty-one. Of this number fifteen members are Seniors. This Senior Roll Call includes: Alice Duncan, Bob Dunfee, Bob Francis, Mary Ellen Keyes, Anna Belle King, Irene Kuzmic, Herbert Lewis, Martha Lou Miller, Mary Palatin, Roger Quinlan, Louis Reynolds, Genevieve Richardson, Eugene Sargent, Dona Lou Wilson, and Joe Voorhees.

### "BABOUSCKA"

"Babouscka," the Drama Club's Christmas play, was rather supernatural in nature; the character, Babouscka, being symbolic of the Christmas spirit. Natasha, a faithless woman, lives in fear that the secret of her fortune will be discovered; while Olga prays to find courage and faith in love. Marya, the mother of Stephen, proves through Babouscka that kindness to all has its rewards.

#### CAST:

Babouscka .....	Marilyn Steele
Natasha Petrovna.....	Beatrice Jones
Marya Andreyevna.....	Helen Miholick
Olga.....	Anna Belle King
Stephen.....	Jim Davis
Neighbor Traiska.....	Donna Davis

## "MYSTERY AT GREENFINGERS"



The Senior Class, with the able assistance of the Senior Drama Club, presented one of the stages best mysteries before two packed houses on April 13th and 14th.

The event was arranged through the courtesy and willingness of the Drama Club members, who agreed to stage the production for the Senior Class treasury even though it meant canceling the clubs plans for a spring play.

Under the capable direction of Mr. James Lewis Casaday, one of the best productions seen in the auditorium in months greeted the audiences. The play moved with snap and vigor and the young artists of the Drama Club had the mass of the audience in an air of expectancy until the final curtain.

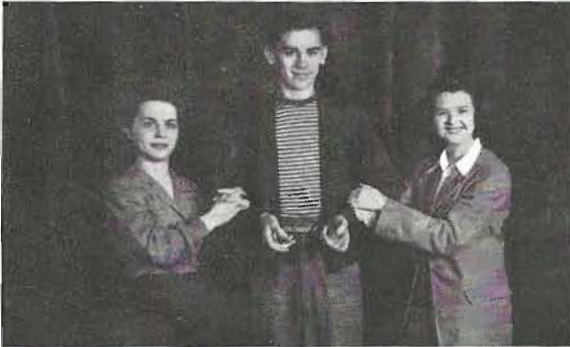
### The cast included:

Ruth Orton.....	as Miss Tracy
Donna Davis.....	as Helen Tennant
Jane Johnston.....	as Edna Sanders
Theresa Kuharick.....	as Mrs. Heaton
Faith Campbell.....	as Sally Phillips
Leta Clark.....	as Clara Packer
Bob Swantz.....	as Keith Henley
Eddie Jordanich.....	as Arnold Jordon
Bob Priebe.....	as Fred Poole
Jack Welch.....	as Robert Crowther

### Assisting committees included:

Tickets.....	Joe Voorhees
Student Director.....	Mary Palatin
Wardrobe.....	Mary Ellen Keyes
Stage Manager.....	Art Russell
Sets.....	Pat Myers

## "MISTRESS OF THE INN"



"Mistress of The Inn," a fast moving period play was given by the Riley Drama Club on October 14th and 15th. A double cast was used, giving a large number of the talented members of the Drama Club an opportunity to do their bit. At the curtain's opening the audience was greeted with a splurge of color and words, neither of which subdued during the entire three acts. Not since "Captain Applejack" has the Drama Club given a period play—the house was filled on both nights. The applause of the audience spoke their enjoyment and the cast and stage crew were pleased to see "Mistress of The Inn" a great success.

The cast is as follows:

Marquis of Forlipopoli.....Eddie Jordanich  
Gale Merrick

Count of Albiorita.....Fred Weidman  
Fabrizio.....Kay Bristow  
Tom Hallorn  
Cavalier of Ripafrotta.....Louis Reynolds  
Eugene Sargent  
Mirandolina.....Madge Kusener  
Pat Myers  
Jacapo.....Joe Voorhees  
Kenneth Weaver  
Ortensia.....Mary Ellen Keyes  
Lois Layman  
Dejanira.....Patsy Chapman  
Marilyn Steele  
Production Staged by.....James L. Casaday  
Assistant Director.....Annabelle King

## DEBATE



Left to right, seated: Fred Weidman, Donna Davies, Eugene Sargent. Standing: Don Schultheis, Jack Bush.

This season's Varsity Debate Team ranked high as it has for many succeeding years. The activities began last September with the opening of school and have continued up until April of this year.

The Team again participated in the St. Joseph County Debating League. While Central won first place in the debate, Riley tied with Adams for second place. The members of the Affirmative team were Fred Weidman, Jack Bush, Don Schultheis and Joe McQuivey, and the Negative team was composed of Norman Kopec, Eugene Sargent, and Donna Davies.

Besides the debates in the League there also was a Panel Discussion. The four schools, Riley, Central, Adams, and Mishawaka participated. Riley was represented by Norman Kopec and Eugene Sargent. Everyone was proud to have Eugene Sargent triumph by taking first place.

Next on the list was the Extemporaneous Speech in which Eugene Sargent won second place.

The League was only one phase of the activities for thee was still the Speakers Forum at LaPorte. The team won two discussions and Riley was well represented in the other. Madge Kusner won first place in the Poetry Reading group and Eugene Sargent took second place in the Oratory group.

Then of course there is the American Legion Contest in which Eugene Sargent dis-

tinguished himself by winning first place in the County.

And there were the After Dinner Speeches in which Donna Davies won third place and Don Schultheis took fifth place.

Another popular contest is the one sponsored by the Kiwanis. This is an extemporaneous contest featuring certain issues of the Reader's Digest. The pupils are given an opportunity to prepare their discussions one hour before the contest begins. The contest usually takes place in May before the Kiwanis Club of South Bend. The student who wins, receives the honor of having his name engraved upon a gavel made from wood taken from the Council Oak. Madge Kusner has been chosen from Riley to compete in the contest. Since the contest hasn't taken place yet we cannot give you the results but Madge can be counted upon to be a real representative of Riley.

Mr. Rhodes is to be thanked for training all this fine group. He has long been noted for his excellent training of the debators, and as coach of the squad he accompanied the group at all their activities.

Here is a school activity that gives valuable training to those students who are willing to study and train for participation in it. Demand on their time is sometimes heavy but the reward is great for those who make the sacrifices to become finished debators and speakers.

## HOOSIER POET STAFF



The Hoosier Poet is published annually by the graduating seniors under the capable direction of Mr. George Koch.

It is the aim of the Hoosier Poet staff to give the activities of the seniors along with their pictures, reviews of plays, club news, sports news, scenes from plays given during the year, news of our musical organizations, and other such activities that are carried on by the student body during the school year.

This year's staff is: Editor, Dorothy Anderson; Managing Editor, Mary Ruth Hock; Senior Section, Susan Walker, Betty Steffy, Jeanne Erhardt, Kenneth Miller; Music, Irene

Kuzmic, Paul Richardson; Drama, Betty Ashman, Mary Palatin; Sports, Don Schultheis, Bob Stavroff; Features, Mary Jane Urquhart, Leta Clark, Betty Stout; Art, Norma Rogers, Louis Reynolds, Bob Dunfee, Barbara Bair, Luella Hein, Edward Harding; Circulation, Lillian Vogel, Leta Clark, Wilma Zellers, Theresa Kuharick, Mary Hepler, Marilyn Martin, Betty Wyatt, Omeda Weaver; Advertising, Harley Tranter, Joe Voorhees, Helen Smith, Martha Lou Miller, Leta Clark; Photography, Tom Bayless, Lyle Schang; Typists, Wilma Zellers, Helen Smith, Shirley Nelson, Beverly Morgan, Betty Horvath.

## HI-TIMES



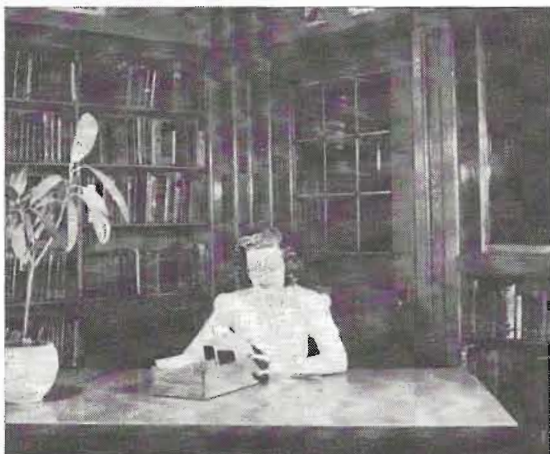
The Hi-Times, Riley's popular school newspaper, is published each Friday morning. It gives the general news and activities of the school and the community, assists in all war effort activities, leads student body in striving for high standards in all phases of school work and organizations, and conducts polls for the Scholastic Magazine.

Under Miss Bess Wyrick's able and efficient direction as faculty advisor, the staff includes: Editor, Anne Clements; 2nd Page Editor, Wanita Turner; 3rd Page Editor, Dorothy Smith; Sport Page, Fred Weidman; Literary Editor, Mary Ellen Keyes; Service Notes Editor, Charlotte Gilbert.

The Business Staff is: Business Manager, Irene Toth; Advertising Manager, Betty Stout; Circulation Managers, Jack Feirrel and Fred Baum-

gartner; Circulation Assistants, Mary Jane Baer, Nick Carlo, Marianna Titus, Barbara Scheidegger, Jim Gibson, John Gordon; Head Typists, Doris Crandall, Nettie Klawinski, Mary Ann Bucher; Reporters, Julia Ann Sarber, Ted Moore, Bill Traver, Margaret Berg, Betty Lou Pinney, Virginia Carey, Jack Feirrel, Violet Pokrita, Charlotte Gilbert, Donna Bell Roesch, Beverly Foote, Mary Blough, Nick Carlos, Richard Thorman, Mary Ellen Keyes, Jane Frances Johnson, Frank Kuklaty, Herbie Lewis, Joan Kopsa, Jayne Morgan, June LaHommedieu; News Reporters, Marianna Titus, Barbara Scheidegger, Jim Gibson, John Gordon, Cliff Markham, Jean Zimmer, Ralph Hay, Rupert Biddle, Bob Hart, Don Krider, George Porter, Robert Finneran, Helen Black; Assistant Typists, Lois Horne, Isabel Cohen, Leonard Gilligan, Vada Engdahl, Joan Campbell.

## LIBRARY



The library is the center of interest in any educational institution. Here at Riley we boast of a library second to none among high schools in Northern Indiana.

Under the capable direction of Miss Josephson and her staff of student librarians, Riley's library is managed efficiently and courteously, the thought foremost in their minds being: "The greatest good to the greatest number."

Pictured above at the top left, is Betty Hicks, in charge of the magazine desk, and right, our librarian, Miss Josephson in the faculty reading room.

In the center left is Betty Arch, Louise Mesaras, and Jackie De Laire at the history section, and at the right is Freada Weaver and Mary Blough, who have charge of the reserve desk.

Below at the left is John Hock who can tell you anything about the card catalog, and at the right is Elizabeth Ruggieri who manages the return desk.

The Hoosier Poet regrets that space does not permit us to picture every member of the Library Staff, but their efforts are appreciated by students and faculty members alike.



# THE HOMECOMING

By DOROTHY ANDERSON

Kit Steward felt very important as he sat beside his pretty mother watching the plains sweep past the window of the South-Bound Flyer. They were going from his home in Ohio to Camp Winson, Texas, to see his father, Lieutenant Allen Steward of the United States Army, whom Kit, although past seven years old, could not remember.

Kit had lived with his mother and his grandmother in the little house on Elm Street for as long as he could remember and he had never heard anything about his father. Once, when he had questioned his mother on the subject, she had turned a bit white and, shaking her head a little, had told him that his father had gone away and that he should go out to play and not worry about it. Pam, her real name was Pamela, had always been very dear to Kit so he had gone out and never thought about it much, except when his friends talked about their fathers so proudly. Even at these times Kit never said anything to anyone. Sometimes at bedtime he thought of his father and wondered when he was coming home, but he never mentioned this to his mother because she might turn white again.

Now they were going to see him. Kit could hardly believe it. Only a week ago Pamela had told him his father wanted to see him. They were going to Texas, where his father was a lieutenant in the Army. Kit was thrilled and excited at the news and ran to tell his friends of his good fortune.

During all of the next week both had been extremely busy. There were many shopping tours, for both needed new things in honor of the event. Kit, exalted in his joy, whistled merrily as they packed. When Tuesday came, they were to leave on Wednesday morning, he was even more excited than before. Once he stopped and looked at his mother as she bent over the nearly packed suitcases. Pam seeing him so sober, asked: "Why Kit, what is the matter?" Kit looked down at the floor and then said, "Don't you want to go and see daddy, mother? You never sing or smile as you used to."

"Of course I want to go to see your daddy, Kit," she laughed. "I guess I have been too busy to sing much. Do you want me to sing?"

"Sure, mother, then I know you're happy," Kit replied, and as Pam sang they both started packing again.

As Pam sat beside Kit on this swiftly moving train she wondered what Lieutenant Allen Steward would be like. It has been such a long time since five years ago, when he had walked out of Kit's life and out of her own. From his recent letter she judged that he must be different from the handsome, egotistical, rich, gambling drunkard of 1938. She didn't even know he was in the Army until his letter arrived.

Now she and Kit were on their way to see him. Now, she supposed, the gossip would start all over again just as it had five years ago, but that didn't matter to her anymore; she held the fate of Al's life, her own life, and, above all, the fate of Kit's life in her hands. As

she rode, she closed her eyes and prayed as she had seldom prayed before that this might be the best for all of them, and she prayed for the courage to go on.

As the train roared on, Pamela's thoughts raced on ahead to Winthrop and Camp Winson. She wondered what Al was doing, and how he felt about his expected visitors. He had told her in the last letter that Bill and Sally Curren, friends of theirs for year, had a house near the camp and wanted her and Kit to live with them during their stay.

Suddenly Kit interrupted her thoughts. "Mother?"

"What is it, dear?"

"What is daddy like?"

The question coming as a bullet out of the clear sky shook Pam's thoughts quickly back to the present. "He is very nice, Kit. Do you remember what grandma read to us last week about a 'Friend'?"

"Yes."

"Your father is very much like that friend was. He is rather quiet, but he likes sports very much and I imagine he will be able to give you a lot of pointers on baseball."

"Was he always like that—nice I mean?"

"Almost always, dear."

"Doesn't he like little boys, mother?"

"Why I am sure he does. What ever made you ask that, Kit?"

"I don't know, except that he never comes to see us like Billy's daddy does."

"I'm afraid your father was too busy, Kit. Perhaps, if you want him to, he will come to see us someday."

Just then the porter came through the car and stopped by their seat. "We will arrive in Winthrop in twelve minutes, ma'am."

"Thank you," Pam answered, grateful for the news. "Our bags are the three striped ones—that's right."

Al was standing on the platform as the train came to a stop. Pam saw him from the window but said nothing. The porter helped them down the steps and Pam suddenly realized that Al was coming toward them.

"Hello, Pam."

"Hello, Al."

"I am very glad you were able to come."

"Kit, this is your father."

Kit held out a sturdy arm. "Hello."

"Hello, Kit. Did you have a nice trip?"

"Yes sir, we did."

"Would you like to help me get your luggage, Kit? You know more about it than I do."

"Will you come too, mother?"

"Of course, Kit, but I doubt if you will need me. He is a very efficient traveler, Al."

"That's great!"

Al had borrowed Bill's car on his way to meet the train and now, as they drew up to the Curren's beautiful bungalow, all three were strangely silent. The bungalow, rambling and white, was surrounded by a large, beautifully landscaped yard and fronted by a broad porch. There was a comfortable, easy-going look about the home and both Pam and Al wondered what it held in store for them in the near future. Al looked at Kit and, trying to break the suspense of the moment laughed: "Well, here we are! Would you like to give it a more thorough inspection, Kit? There is a big yard in the back and Bill says that he has some baseballs and bats in the garage. If you haven't been practicing too much lately, perhaps we can play after you have changed your clothes. That suit is much too nice to play in."

"If mother doesn't mind, that would be great, sir."

"Say, must we keep the 'sir'? This is absolutely off duty so we don't want any such formality. Have you ever tried saying dad?"

"No s— —dad. I—wasn't sure—."

"Okay, Kit, we're sure now."

Pam was smiling as they climbed from the car and walked toward the house. Just then Sally came to the door.

"Hello, Pamela! How are you? It has been so long since we have seen you."

"Hello Sally. It was so kind of you to invite us here during our stay."

"And this is Kit! How are you, Kit? I had not heard of you since you were very, very small until Al told us you were coming. Did you have a nice train ride?" Sally went on as if not interrupted at all.

"How do you do. Yes, the train ride was very nice." Kit politely answered.

"What a lovely home, Sally! It is so cool and refreshing." Pam remarked.

"Thank you, Pam. You must be very tired from your long ride. Wouldn't you like to see your rooms now and rest for a moment? Later on I will show you the entire house if you like. But, I suppose you and Al would like to talk for a while since you haven't seen each other for so long. Come on Kit, let's see if we can find some play clothes in that suitcase. Did your father tell you that there is a little dog out in the yard?"

"There is? Can I play with it? Does it like little boys?" Kit asked excitedly as he put his hand into Sally's. "We'll be back soon, mother. Good-bye dad."

"Good-bye Kit. See you later," Al called after their retreating backs. "Well, Pam, it has been a long time since we have talked this way."

"Yes, Al, it has. Five years has been a long time."

"Must we remember? I have tried to forget ever since I joined the Army two years

ago, but I couldn't. It has done something to me, Pam—all of the discipline, the rules, and the responsibilities of rank. When I saw the great devotion of my fellow officers to their families, something just snapped. Knowing how I treated you and Kit, I realized I wasn't fit for my rank in the Army. My superior wouldn't care for a deserter. I know that I am saying this poorly, but I hope you understand. That's why I had to write to you—and to see you and Kit. I just couldn't go on knowing that I wasn't doing my share."

"I think I understand, Al."

"I was a heel before—I didn't realize—I guess I couldn't take it in my stride—I wanted to be free—but I don't now. I want to shoulder my part of your burden, Pam. I'm different now and I'll prove it to you. I want you to take me back. There is no need to answer now but—please think it over."

"All right, Al, but I think I know my answer now."

"Pam!"

Just then they heard Kit calling to them, and, smiling, they went out to see what all of the excitement was about.

"Look, dad! Isn't this a swell dog? Sally—she said I could call her that—said I could play with it while I'm here. It's almost like Bud's dog back home, isn't it, mother?"

"It certainly is Kit," agreed Pam.

The next week was a busy one, especially when Al was able to be off duty and he and Kit and Pam spent many hours playing ball or taking hikes. It seemed as if they had just arrived in Winthrop until it was time to start back home and, when the three parted at the station on that last evening together, there seemed to be a suggestion of tears in each of the three pairs of eyes.

All whispered, "Thank you dear, for making life worth living again." He kissed Pam good-bye and then stooped to say good-bye to Kit.

"Take good care of your mother, Kit. I'm trusting you as the man of the house to see that nothing happens to her."

Kit replied stoutly as he gave his father a big hug, "I will, dad," and followed his mother into the car.

Al stood on the platform and waved to them as the train pulled out. From under the bright lights Pam thought his eyes glistened particularly bright.

Pamela sat quietly watching the dark shadows slip by into the night. Kit, nestled beside her, seemed almost asleep when suddenly he raised his sleepy head and asked: "Mother, when is dad coming home?"

"Coming home, dear? He's home now. Back home where he has wanted to be for a long time—with you and me. We must never let him leave us again."

## COACHES



MR. KELLY  
MR. PARKER

MR. WAKEFIELD  
MR. FARRELL

Above are the four men who guide Riley's young athletes in varsity competition. Upon them rests the responsibilities of being leaders of young men, and all agree that they are ideally equipped to do it.

Mr. Kelly, new varsity coach of football and baseball, is a graduate of Upper Iowa College and received his Masters Degree from Iowa University. A keen student and lover of all sports, he won admiration for his able handling of a green football squad in guiding them through a successful season. This spring, his baseball team is well on its way to a highly successful season.

Mr. Wakefield, varsity coach of basketball and track, has made an enviable record while at Riley. His basketball teams are always

smartly coached and in every game, win or lose, show that they are under able direction. While track has never been as popular as other major sports, Mr. Wakefield by patient effort has done much in advancing it to the position it will one day reach.

Mr. Parker, new assistant coach in football, basketball and baseball, has likewise made a fine record during his first year at Riley. He was an able assistant to Mr. Kelly during football, and his B team in basketball came through with an undefeated season.

Mr. Farrell, assistant coach in football and basketball, resigned at the beginning of the school year to accept a commission in the Navy. A courageous and able leader, he is being missed at Riley. Our loss is the Navy's gain.

# VARSITY BASKETBALL



Husvar  
Rush  
Swantz

McDaniels  
Sauer  
Pabst

Swartz  
E. Kovatch  
Whitmer

## BASKETBALL

Coach Wayne Wakefield has made an enviable record since becoming head coach when Mr. McCarnes left. His teams are always well coached and play a fine brand of basketball. This year his material at the start of the season was of unknown quality but through hard work he gave Riley a strong team.

Following is a review of the season:

The Riley Wildcats opened their basketball season at Culver where they were defeated 34-33. The score was 19-10 at the half time, Culver's favor. The Wildcats climbed to within 1 point of Culver but the game caught them short.

The Washington Panthers were defeated in a one-sided affair 35-20 by the boys from Riley. Husvar was high man for Riley while Banazak of Washington was high man for the losers.

North Side of Fort Wayne edged out a win over Riley to the tune of 34-33. Swartz was high man for the South Siders with 3 baskets and 3 free throws.

Wayne Wakefield's boys conquered the Eagles of Adams in a "hot" ball game. Score 40-30. Riley held a 19-18 half-time lead. Swartz of Riley collected 7 points and McIntyre collected 9 points for Adams.

Riley's arch rival, Central, fell to the wayside as Riley breezed to a 38-26 win. Swartz was again high man for Riley while Hazen of Central was high man for the losers.

The Mishawaka Maroons overcame a 21-20 Wildcat half-time lead to surge to a 38-36 win.

It was a tough game for Riley to lose since they led up to the third quarter. Sauer was Riley's high man with 13 points.

The team journeyed to Richmond, Indiana, and there overcame a hard-fighting ball club 39-30. Riley had the ball game under control throughout the entire evening. Husvar was high man for Riley with 14 points.

Riley avenged and earlier defeat by the Cavemen by turning on the pressure in the last quarter. Riley scored 17 points in the final quarter while Mishawaka scored 2 points. Final score was Riley 52, Mishawaka 34.

Riley's scoring machine took the Rochester Zebras to the tune of 60-43. Husvar of Riley was really steaming as he collected 16 points. Denten was the loser's high man with 11 points.

South Bend Central avenged an earlier defeat by Riley and defeated Riley, the score being 35-33. Riley led at the half, 15-14, and at the start of the fourth quarter the score was 22 all.

Laporte administered a close defeat to the basketballers from Riley. The final score was

36-34, the all important 2 points belonging to Laporte.

Elkhart defeated Riley in one of the strangest games ever played. A total of 9 points was scored in the entire game and the final gun caught the score at Elkhart 5, Riley 4.

It was another close game as the Wildcats defeated the Plymouth Pilgrims, 29-28. Plymouth led at the half 19-12 but Riley overcame this lead and went on to win.

It was two in a row as Riley subdued the Goshen Redskins, 29-19. Riley led 15-5 at the half and Goshen was never able to overcome this obstacle.

The high flying Eagles of Adams pounced on Riley and left the Wildcats on the lean end of a 25-22 score. McDaniels was high point man with 13 points.

Riley earned a hard victory over the Michigan City Red Devils, 49-47. McDaniels was again high point man with 19 points. This was Riley's third conference win.

Nappanee was the victim of Riley's sharpshooters as the Wildcats surged to a 46-33 win. Riley had control of the ball game throughout the evening. McDaniels was high man with 13 points.

### SECTIONAL PLAY

In their first sectional game, the Wildcats found themselves the victors over the Central Catholic Cagers. The score was rather one-sided as Riley triumphed 57-19.

Riley opened their sectional play by defeating

the South Bend Catholic boys 63-17. The boys from the Catholic school were no match for the Wildcats. Hartman was high man for Riley with 10 points.

Riley and Central, two arch rivals, met in the semi-finals at Adams and when the smoke had cleared the final score was 51-37. Hans of Central was in Riley's hair all evenings and his 17 points really helped Central's cause.

The team is to be congratulated on the season's record. Throughout the entire season they showed a spirit of determination to win that was evident in every game. In many instances they made a gallant comeback when the score was against them to win a fine victory.

Prospects for next year's team at the present are somewhat dim. Of this year's varsity, Coach Wakefield has only three boys returning. They are Kovatch, Whitmer and Hartman. However nearly all of this year's undefeated "B" team will be candidates for varsity competition next year.

With them, Mr. Wakefield should be able to mould a fine squad.

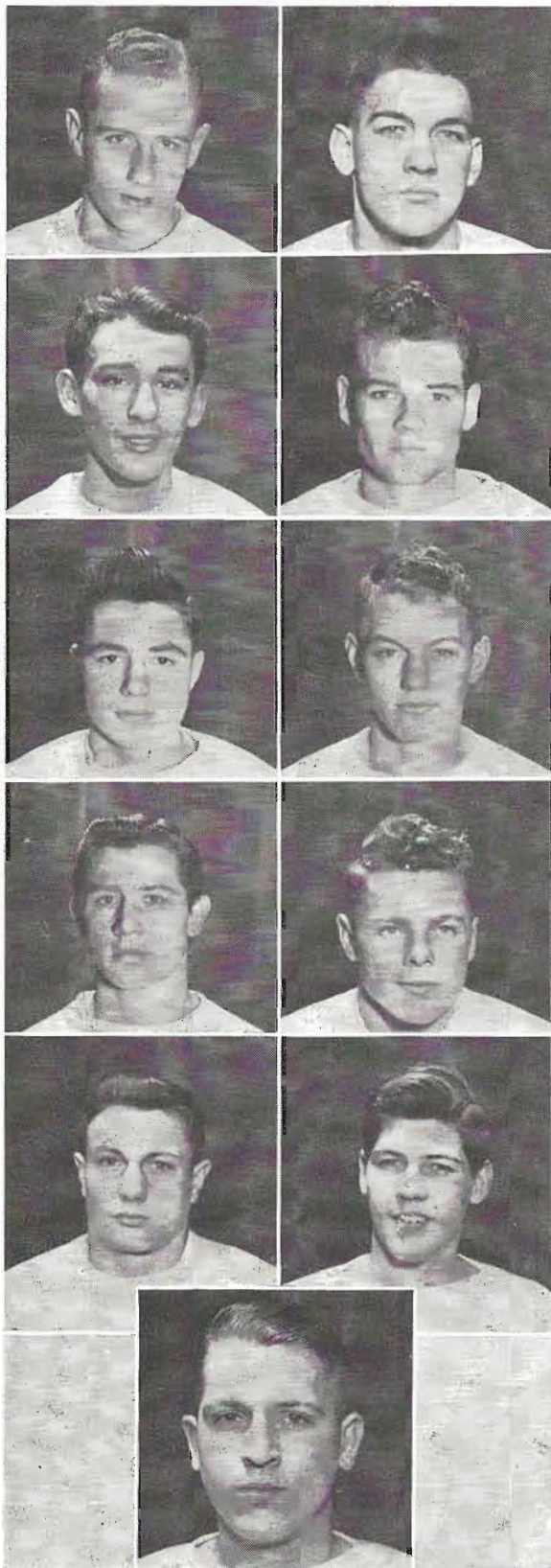
### SCORES

Riley	33	Culver	34
Riley	35	Washington	20
Riley	33	No. Side Ft. Wayne	34
Riley	40	Adams	30
Riley	38	Central	26
Riley	36	Mishawaka	38
Riley	39	Richmond	30
Riley	52	Mishawaka	34
Riley	60	Rochester	43
Riley	33	Central	35
Riley	34	Laporte	36
Riley	4	Elkhart	5
Riley	29	Plymouth	28
Riley	29	Goshen	19
Riley	22	Adams	25
Riley	49	Michigan City	47
Riley	46	Nappanee	33

### SECTIONAL PLAY

Riley	57	Central Catholic	19
Riley	63	So. Bend Catholic	17
Riley	37	Central	51

# FOOTBALL



A new era of football opened at Riley with the 1943 season—an era that promises to be a highly successful one. At the helm of Riley's football fortunes for the first time were head coach Paul Kelly and his assistant coach, Gregory Parker.

Coach Kelly came to Riley from Sullivan, Indiana, where his teams were always highly regarded. A graduate of Iowa University he has always believed that sports are played for the good the boys get out of them, rather than for success in the win or lose columns. He insists that his boys be in good condition, and can aptly be called a taskmaster when physical condition is concerned. He has won admiration for his painstaking ability to teach his charges the fine points of the game, and he spends hours teaching them to do one thing correctly.

Coach Parker, a graduate of Indiana State, assistant coach in football has fitted ideally into Riley's football picture. He is greatly interested in boys and has unlimited patience in handling them. A long-time friend of Coach Kelly's he has known his style of play, and consequently fitted in ideally as the assistant coach.

Their first season's record is one to be proud of. Knowing little of their players or their abilities, they opened the pre-season practice with a determination to succeed. And considering wins and losses only, succeed they did—capturing six of eight games played. Opening at Lew Wallace with a squad that was green they dropped a heart-breaker by six points to a team that was a top-heavy favorite. Returning home they showed the squad to the home folks the following weekend.

The team turned in one of its finest games of the year downing a strong Whiting team 7-0. While the weather man failed to cooperate in every instance in the games to follow, the squad showed improvement from week to week. In spite of a downpour of rain they easily conquered Laporte, and going to Elkhart the next weekend, defeated this traditional rival 27-2. The Adams Eagles were taken in stride 27-6 and then came the Washington Panthers whom everybody expected would conquer Riley and go on to a state championship. The Panthers did just that, conquering the Cats in one of the worst rainstorms of the season. Washington's heavy line held too great an advantage and her backs splashed to a 20-0 victory.

Coach Kelly's men bounced back the following week conquering Michigan City in a hard fought 19-12 victory, and the coaches and squad prepared for the big game of the year, the Central Bears. Kelly's lads

Left to right: (Row 1) Morrison, Husvar. (Row 2) Mattisits, McDaniels. (Row 3) Whitmer, E. Kovatch. (Row 4) Mihalovich, Sticklely. (Row 5) G. Kovatch, Ruth. (Row 6) Sauer.

R  
 19  
 W  
 13  
 3

# FOOTBALL

came through, putting on two drives that finally won. A brief resume of the season follows.

## Lew Wallace 18 — Riley 12

Riley opened its season at Gary. It was the first game for the new coaches and we had almost a whole new team. The high light of the game was the kickoff when Gruber fell on the ball over Lew Wallace goal line thus scoring a touchdown on the kickoff.

## Whiting 0 — Riley 7

Riley played Whiting as the opener for Riley at home. The team showed splendid teamwork. Both teams did a lot of spectacular passing.

## Laporte 0 — Riley 20

Riley was host to Laporte in a downpour. It seemed as if the team couldn't be stopped since all the scoring was in the first half. The team worked together as one instead of eleven.

## Elkhart 2 — Riley 27

Riley played Elkhart at Elkhart. The Wildcats were out for another kill. The second quarter was the best one, since two of our touchdowns were scored then. Stickley was outstanding with his passing.

## Adams 6 — Riley 27

Riley defeated Adams for the third straight year. Husvar did a fine job of driving through the holes made by Kovatch and Whitmer in the Adams line.

## Washington 20 — Riley 0

Washington, the state champs, defeated the Wildcats in a terrific cloudburst. Bibbs was one of the outstanding players since he did all the scoring. Zaleski was also prominent.

## Michigan City 12 — Riley 19

Riley was back on the victory path by downing Michigan City. Captain George Kovatch was outstanding for the way he opened up holes for the backs.

## Central 7 — Riley 13

The Wildcats defeated the Bears in a shower. The entire Riley squad played a perfect game. Among the highlights were the goal line stand made by Riley in the first quarter and Whitmer's eighty-yard punt later in the game.

Left to right: (Row 1) Wilson, Novak. (Row 2) Bolin, Shankermon. (Row 3) Mabry, Smith. (Row 4) Whippo, Gruber. (Row 5) Eufeami, Phillips. (Row 6) McIntyre.



# SPRING SPORTS





BASEBALL SCORES, 1943

Placed Third in Conference

Riley	4	Adams	1
Riley	2	Washington	1
Riley	7	Nappanee	0
Riley	9	Mishawaka	18
Riley	1	Washington	2
Riley	1	Central	4
Riley	5	Adams	0
Riley	3	Michigan City	1
Riley	9	Elkhart	5
Riley	2	Laporte	0
Riley	6	Washington	7
Riley	7	Central	0

SEASON, 1944

Riley	3	Adams	0
Riley	11	Central	1
Riley		Nappanee*	
Riley		Mishawaka*	
Riley		Adams	
Riley		Central	
Riley		Laporte*	
Riley		Washington*	
Riley		Central*	
Riley		Washington	
Riley		Adams*	
Riley		Michigan City*	
Riley		Central	
Riley		Elkhart*	
Riley		Mishawaka	
Riley		Adams	

\*Conference Games



GOLF RESULTS, 1943

Placed Fifth in Conference

Riley	4 ½	Central	8
Riley	5 ½	Michigan City	6 ½
Riley	4	Central	4
Riley	11 ½	Laporte	3 ½
Riley	5	Central	6
Riley	3	Mishawaka	9
Riley	10 ½	Adams	4 ½

SEASON, 1944

Riley	Adams
Riley	Mishawaka
Riley	Central
Riley	Adams
Riley	Mishawaka
Riley	Central
Riley	Laporte
Riley	Adams
Riley	Mishawaka
Riley	Central



CROSS COUNTRY

The team personnel of the 1943 Cross Country Team were Herbie Lewis, Ed Strantz, Bob Lewis, Charles Plank, Don McGowan and Dean Thomas. This group of boys did the track work for Riley and captured sixth place for Riley in the Conference.

These are the Cross Country results for 1943:

Riley	21	Central	35
Riley	25	Laporte	32
Riley	29	Elkhart	27
Riley	15	Central	43
Riley	27	Elkhart	28
Riley	19	Central	36
Riley	26	Goshen	30
Riley	27	Goshen	28

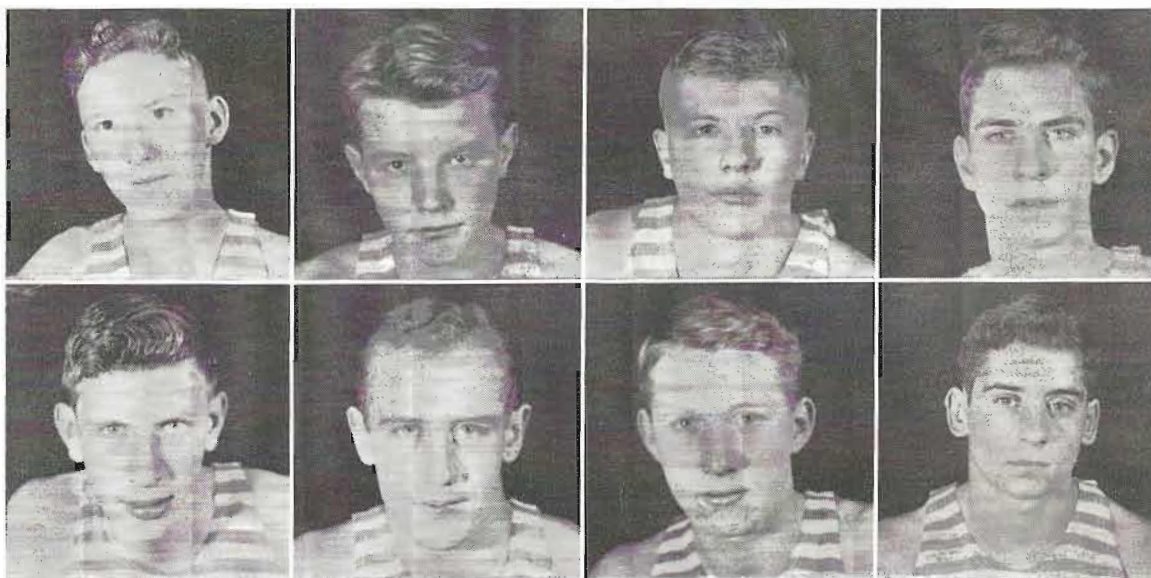
TRACK SCORES, 1943

Riley	55	Adams	54
Triangular—			
Central	79 ½	Adams	29 ½
		Riley	28
Quad—			
Mishawaka	68 ½	Adams	14 ½
Central	67	Riley	13
Conference: Herb Lewis only winner.			
Riley	46	Washington-Clay	63
State: Bill Dumont only Rileyite.			
Riley	23	Elkhart	76

"44" TRACK SCHEDULE

Indoor meet at Notre Dame  
 Adams  
 Quad (Riley, Central, Adams, Mishawaka)  
 Goshen  
 Central  
 Elkhart  
 Triangular (Riley, Adams, Central)  
 Conference Preliminary  
 Conference Final  
 Washington-Clay  
 Sectional  
 State Final (Indianapolis)

## "B" TEAM BASKETBALL — TENNIS



Wood  
Kudlaty

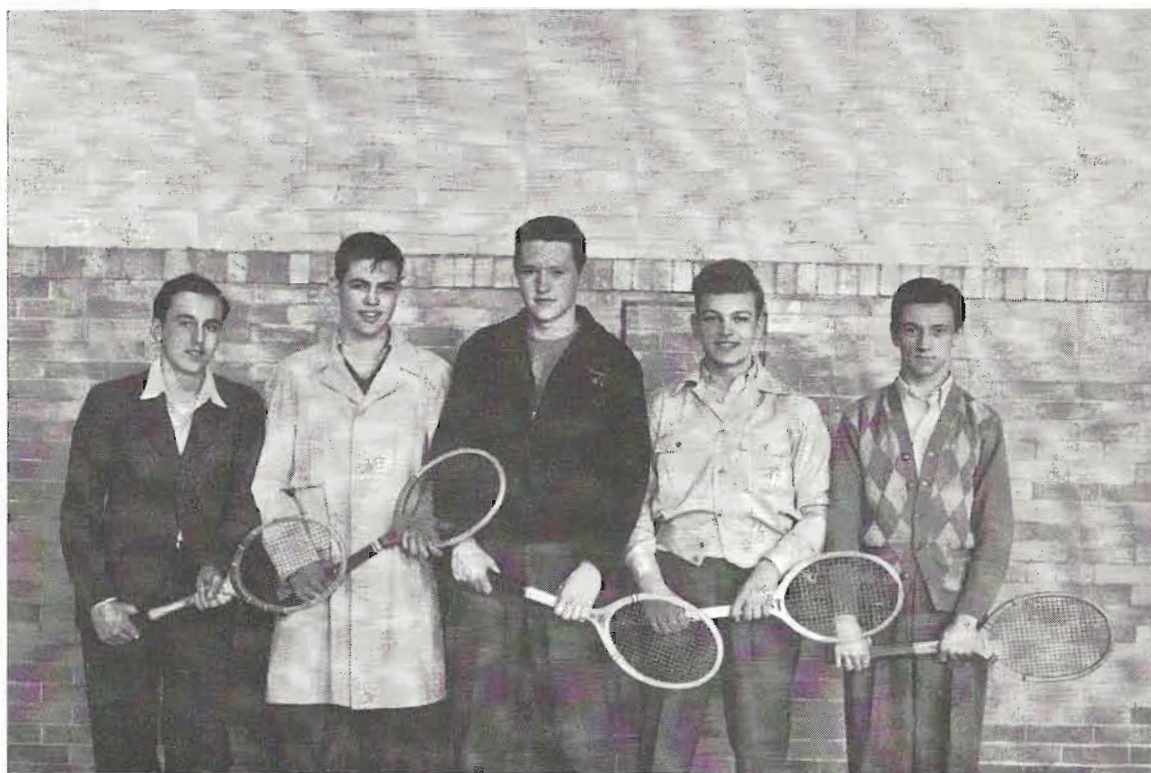
Merriman  
Morrison

Hartman  
Rurk

Cubbison  
Keiser

The "B" team under Mr. Parker turned in a splendid record of 18 consecutive wins for a perfect season. The first string Kittens consisted of Dick Morrison, Dick Wood, Don Cubbison, John Keeser, Bob Mangus, and Joe Stalteri. The "B" team reserves consisted of Dean Thomas, Don Hunter, Jerry Smith, Don Hoover, Gene Baney, Bob Turk, Frank Kudlaty, Leo Eufemi, and John Keiser.

The "B" team started their victorious campaign by defeating the Culver Indians 35-14. The next victory was over the Washington Panthers. The next tough game was against Laporte but the boys from Riley came from behind to win. The "Bee" team defeated the highly rated Elkhart Bees and then defeated South Bend Catholic varsity. After Riley's victory over Michigan City, they held undisputed first place in the conference.



Meilner, Haddock, Quinlin, Hunter, Gilligan

## GIRLS SPORTS — G. A. A.



Athletics play an important part in the girls' program at Riley. Under the fine direction of Miss Bauer the girls show great interest in the games and contests, and many of them are spirited ones. Pictured above are: Top, left, Girls' basketball team: Beverly Harman, Dorothy Nicholas, Phyllis Chidester, Betty Bronson, Mary Palatin, Imogene Page, and Marie Tamberini.

Top, right, track team: Leta Clark, Shirley Franzier, Agnes Ribarich, and Betty Dice.

Center, left, scene at softball: Betty Lou Hartman, Dorothy Wensits, and Faith Campbell.

Center, right, volley ball: Shirley Fowler, Truda Kellams, Annie Rossberg, Chadley Harrison, Irene Vargo, Betty Horvath, and Joan Reback.

Lower right, girls' basketball champs: Faith Campbell, Beverly Harman, Truda Kellams, Betty Bronson, Dorothy Nicholas, Imogene Page and Betty Lou Hartman.

## THESE CLUBS . . . .



The Hoosier Post proudly presents a group of committees, and service organizations or their officers whom we rightly hail as the Go-Givers. They gladly serve the school, the faculty, and the pupils. They are unselfish in their time and energy, as long as they are for their school. Because their efforts are so genuinely sincere the school thanks them and hopes they know their work is appreciated.

**THE STUDENT COUNCIL:** Under Mr. Wolfram's direction, this council is the contact between the student body and the school administrators. No undertaking is too large or too small for this group to undertake. They serve well, because they have the interests of their fellow students at heart. Left to right: Dick Harmon, vice-president; Betty Wazney, president; Faith Campbell, secretary-treasurer.



**JUNIOR RED CROSS:** This organization is sponsored by Miss Frueh. Its members are also members of the National Red Cross organizations. Practically all activities of the Red Cross in school are handled by the junior group. In addition, they sponsor many projects of their own. Left to right: Lois Lehman, secretary; Joan Campbell, president; Marilyn Hill, vice-president.



**SCREEN CLUB:** The boys, under Mr. Wiatrowski's direction run the machines when visual aids are made part of classroom teachings. Demands upon their time are sometimes heavy, and they are responsible for safe keeping of expensive equipment. Left to right: Ed. Keppler, Merle Myers, Francis Brown, Lyle Shang, Mr. Wiatrowski, Tom Bayless, Herb Remington, Robert Hall, Robert Summers.



**THE HI-Y:** One of the school's oldest organizations, the Hi-Y is ever ready to assist in any worthwhile project. In the fall they sponsor an inter-school football frolic, while their Easter program is always looked forward to with real interest. Left to right, seated: Eugene Sargent, chaplain; Bob Swantz, president; Roger Weaver, treasurer. Standing: William Fites, secretary; Don Schultheis, sergeant-at-arms.

## SERVED THEIR . . .

**GIRL RESERVES:** This organization is one of the most active and helpful to the high school girls. It's greatest aim is to make women out of the girls of today. They give much consideration to their social leaders, who are doing everything possible for them. Left to right: Betty Rodgers, Truda Kellems, Dorothy Nickolas, Patsy Chapman, Beverly Harmon.



**STAGE CLUB:** If you like the excitement and suspense that goes with staging an opera or a Broadway hit sign up with the Stage Club. It's hard work, but if you enjoy "the stage" you will like it. This club helps the director design and build sets; then work out lighting effects; and set the stage when the props are secured. In addition to all this they keep the play running once the curtain goes up. Scenery must be changed between acts, and sound effects produced. Here is a club that does interesting and useful things. Pictured left to right are Kay Bristow and Jack Welsh at work during a production.



**USHERS CLUB:** This club is one of the most important organizations we have. They will usher at any of our plays or concerts and they are especially helpful at the basketball and football games. They are "our stand-bys." In addition the Ushers Club can be counted on to run the checkroom when important social affairs are held in the auditorium. All of this service is given gratis and Mr. Horn and the Ushers are deserving of a big round of applause. Left to right, standing: Bill Dean, Bill Warner, Vernon Base. Seated: Huston Ramsey, Jack Dulmatch, Lloyd Dutchess.



**WAR BONDS and STAMPS:** To Riley's students and to them alone goes the credit for the fine record made this year in supporting the war effort through purchase of stamps and bonds. But to the committee who worked and planned the details for the numerous campaigns during the year goes the big "Thank You" from all of us for their fine work. From left to right, the committee is: Anna Belle King, Miss Steele, faculty advisor, and Eddie Jordanich.



## SCHOOL WELL.



**LATIN CLUB:** Here is one of the busiest clubs in school. In addition to their assembly program and banquet they decorate each room with flowers on their annual Floralia, held each spring. Left to right: Leta Clark, president; Joe Voorhees, vice-president; Anne Mossberg, treasurer; Barbara Burr, secretary.



**SPANISH CLUB:** In addition to their main club activity—to become better acquainted with the Spanish language and Spanish customs, the club annually entertains the school with an interesting assembly of the life, music and customs of the Spanish-speaking people. Left to right: Phyllis McClure, president; Mary Ricketts, vice-president; Harriet Lawson, secretary; Phyllis Chidister, treasurer.



**LIBRARY STAFF:** Here is one service organization whose motto is: "The greatest good to the greatest number." In addition this staff has charge of the library bulletin boards which everyone agrees are among the most attractive displays in the building. Pictured here, left to right, seated: Mary Blaugh, Elizabeth Ruggieri, Jo Rita Schultheis. Standing: Calvin Immel, John Hock.



**SALVAGE COMMITTEE:** This committee had its work cut out when school opened last fall. Deciding to discontinue a drive for tin, this committee put all its efforts on waste paper and their efforts were well rewarded because of the fine response from the students. Three major paper drives were held during the year, the third being an outstanding success in every way. Under the direction of Mr. Rhodes, this committee deserves the thanks of the entire school for their unselfish donation to a fine cause. Left to right: Rosemary Craven, Neal Silver, Leta Clark.

## . . . . . CALENDAR

SEPTEMBER 1—Hello to Ye Ol' Halls again! We reported to school today. All the gang is back and we had a good time "getting together."

SEPTEMBER 11—Well, started things out with a bang and went to the Lew Wallace-Riley football game. We lost 18-12, but really had a good time!

SEPTEMBER 17—The cheer-leaders led a nifty pep session in the auditorium this morning. We also played Whiting and won 7-0! Boy, did we celebrate!

SEPTEMBER 22—The Hi-Times gave a "booster" assembly this morning during sponsor period. I think everyone in sponsor room signed up for the first Easter.

SEPTEMBER 30—My friends, the 11B's, struggled through the Stanford Arithmetic test this morning. Refresher Math, here we come!

SEPTEMBER 30—Our paper drive was a great success. Approximately 9 tons of paper were collected during this drive. Thanks for the time and efforts, students.

OCTOBER 2—Girls sell "bangle pins" at N. D.-Georgia Tech game.

OCTOBER 8—Bell Telephone Company sponsors interesting assembly in auditorium. Now we know how it works.

OCTOBER 9—Well, spent the evening at the War Stamp Stomp given by our War Bond committees. Colored lights and everything! Pat did the honors and everyone had a good time.

OCTOBER 12—The 8B's and 8A's started the social season by having their class party in the cafeteria tonight. There was lots of entertainment and good eats, says my inquiring reporter.

OCTOBER 15—The Drama Club play "Mistress of the Inn," proved to be a great success. All the crowd was there. Remember how wonderfully Pat fainted?

OCTOBER 16—Washington Panthers beat us 21-0. What a rain.

OCTOBER 19—The gang and I went to the 11B Matinee Dance tonight after school in the back gym. The man-shortage was very acute, but we still managed to jitter our best!

OCTOBER 21-22—Northern Central Teachers meeting. No school for two days and nothing to do.

OCTOBER 28—We received some very valuable information from the Career Conferences given this morning. Private! For 12B's only!

NOVEMBER 5—Northern Indiana Superintendents meet in South Bend and visit Riley. We behaved very well.

NOVEMBER 6—Everyone had a grand time at the Hi-Y Football Frolic.

NOVEMBER 6—Hurray! We beat Central tonight. The score was 19-12 and everyone is perfectly happy! The town was certainly painted several different colors tonight.

NOVEMBER 9—Our parents had a good chance to get acquainted at P. T. A. Open House. I guess more than one parent was surprised!

NOVEMBER 9—Honor Roll announced, and 231 students are on it. Were you?

NOVEMBER 12—Martha Lou Miller and Don Husvar were the main attraction at the 11th Grade Class Party. They played the part of King and Queen. A big hand goes to all those committees who worked so hard.

NOVEMBER 16—School opens week's celebration of Book Week.

NOVEMBER 19—Wildcats drop first basketball game to Culver, 34-33.

NOVEMBER 22—Our school entered in a nation-wide waste paper drive. The luck did not go to us, but we contributed a great deal of paper towards the drive. Thanks a million, kids!

NOVEMBER 23-24—Carmen Miranda certainly won our hearts at the Spanish Club assembly this morning. I believe Betsy did a role of "glamorizing!" We're all looking forward to next year's assembly!

NOVEMBER 25—Oh Joy! Vacation for Thanksgiving! We didn't have a turkey but had all the trimmings!

NOVEMBER 30—This day found our 9B's and 9A's having a good time at their class party. They have a good start towards their social career!

DECEMBER 2—Ninth Grade holds party in gym.

DECEMBER 5—Students oversubscribe quota in War Chest Drive.

DECEMBER 7—Jean Place named winner of D. A. R. contest.

DECEMBER 10—Boy, did we hear some comments this morning! Everyone is talking about the 10B-10A Class Party which is going to be held tonight. Say, why can't I be a Tenth Grader?

DECEMBER 10—Drama Club announces "Babauscka" as Christmas play.

DECEMBER 15—Band and Orchestra announce plans for holiday dance.

DECEMBER 16-17—A serious moment was appreciated by everyone and the value of drama was proven this morning by the Drama Club in their fine performance during assembly.

DECEMBER 17—Gosh, the last day of school before Christmas vacation. Everyone is happy and the gang certainly "messed" in school today. today.

JANUARY 4—Back to school after a perfectly wonderful vacation. We talked about our experiences and discovered that some of us went to the same dances. The gang and I went to the Riley-Washington basketball game.

JANUARY 5—We discover how many New Year resolutions are broken.

## CALENDAR . . . . .

JANUARY 10—"The Medici," Glee Club opera, goes into production.

JANUARY 11—Played Central tonight. Ask the fellows of the swell time we had afterwards!

JANUARY 13-14—We had an assembly this morning. The orchestra certainly did the honors by presenting a fine concert. Everyone enjoyed it and I heard more than one say that fine talent was shown in that performance.

JANUARY 15—The four high schools dance together at Mid-Year Prom.

JANUARY 21—Semester ends. Only 18% make Honor Roll.

JANUARY 22—Commencement time again, as sixty-nine seniors close out their high school careers.

JANUARY 24—New term opens. New resolutions appear.

JANUARY 27-28—Our school band showed their stuff in assembly this morning. We had a very good concert and from the looks of things, our marching band will be "super" next year!

FEBRUARY 1—Girl Reserves lay plans for membership drive. Annabelle King elected President of Drama Club.

FEBRUARY 7—Bob Swantz elected Junior Rotarian. School fails to earn "Schools at War" flag during January.

FEBRUARY 14—The 12B's began a session of T. B. tests this morning. They are given two shots and then go back for inspection.

FEBRUARY 15—P. T. A. celebrate Founders' Day. Miss Ingleright is principal speaker.

FEBRUARY 16—We had a very fine speaker talk on Africa during assembly this morning. His name was Mbonu Ojike and there were plenty of autograph-hounds afterwards!

FEBRUARY 17—Today found everyone slowly drooling over some "send-me" music presented by the Army Air Corps band. There was both classic and swing music presented and I KNOW everyone enjoyed it.

FEBRUARY 21—Eugene Sargent wins county Debate Contest.

FEBRUARY 22—Dona Lou Wilson and Mary Palatin become President, and Vice-President of Senior Class.

FEBRUARY 22—Golly, did we have fun tonight! Went to the Hi-Y Matinee Dance in the gym after school. The Riley socialites were well represented and the jitterbugs were at their best!

FEBRUARY 23—Went to the Community Recreational Dance at Riley tonight. These dances are really neat and it gives you something to do in the evenings.

FEBRUARY 24—Well, we had more Career Conferences this morning. I guess I can't miss by having a well-arranged future.

FEBRUARY 25—No school today because of the "tourney." I went with the gang and made an all-day session of it.

MARCH 2—Another inspiring assembly was given this morning. A representative from Purdue gave a talk on the "Value of a College Education."

MARCH 6—The Red Cross Drive starts this week. Mr. Webb, assisted by several committees, is planning to turn out good returns. He began by saying that, "It is more blessed to give than to receive."

MARCH 21—All the fellows and girls "moms" and "pops" were entertained at P. T. A. Father's Night. What fun! I guess it's about time I learned to jitterbug and square-dance anyway, say all the parents!

MARCH 30—The Easter season was very appropriately started this morning by the Hi-Y Easter assembly. The Glee Club furnished the music to give it a perfect touch.

MARCH 31—Ah! Welcome Spring! Just think: a perfectly whole, wonderful week of spring vacation!

APRIL 13-14—Say, did we ever have a swell mystery given to us by the Drama Club! They gave "Mystery of Green Fingers" and the cast was "OK"!

APRIL 14—Our good ol' Hoosier Poet Staff gave a come-on-kids-buy-one assembly this morning. All out for Riley's Yearbook!

APRIL 17—Riley receives the "School at War Flag" in honor of its bond and stamp buying ability. Mr. Pointer, principal of Central presents the flag at special assembly.

APRIL 18—Bob Rush pitches no-hit game against Adams, Riley winning 3-0.

APRIL 27-28—Another proof of talent was given this morning by the Glee Club in assembly.

MAY 4—We had an assembly given by the orchestra this morning.

MAY 5—Formals! Music! Boy, was it perfect! Betty Wazney was the chairman of our Senior Prom and she did a very good job.

MAY 11-12—Our Jr. Drama Club did the honors this morning by presenting us with a play.

MAY 19—A final farewell to the school was given this morning in the Senior Assembly.

MAY 21—Baccalaureate services in the John Adams High School auditorium.

MAY 22—Senior exams! Many a one of us held our breath until results were announced.

MAY 23—Senior Tea in the cafeteria. The last school party we attended. At night the Glee Club guest concert. Brilliant in every respect, was this Editor's opinion.

MAY 30—Decoration Day! Commencement Day! The end of a pleasant era, the beginning of a serious one.



# Quality On Parade . . . .

*The Senior Class is grateful to these progressive merchants, business institutions, and professional men who have heartily cooperated with us in publishing this Hoosier Poet. They are deserving of your friendship and support.*

- |   |  |
|---|--|
| The Reco Sporting Goods Store<br>113 N. Main Street<br>Phone 4-5731   | Paul O. Kuehn Shoe Store<br>120 S. Michigan Street<br>Phone 4-4322 |
| Harry E. Berg, Jewelry<br>109 W. Jefferson Blvd.<br>Phone 4-8635      | Sam Parker Cities Service<br>1102 E. Ewing Ave.<br>Phone 3-0794    |
| Van Horne & Co., Jewelers<br>114 W. Washington Ave.<br>Phone 4-2919   | Crawford's Grocery & Market<br>2301 Miami St.<br>Phone 3-3626      |
| Hans-Rintzsch Luggage Shop<br>138 N. Michigan<br>Phone 3-2200         | Sharpes' Store (Dry Goods)<br>1609 Miami St.<br>Phone 3-2270       |
| Bagby Photo Co.<br>110 W. Colfax Ave.<br>Phone 4-8941                 | Miami Hardware Co.<br>1621 Miami St.<br>Phone 3-8686               |
| Business Systems, Inc.<br>126 S. Main St.<br>Phone 4-1188             | Miami Green House<br>2206 Miami St.<br>Phone 4-3911                |
| Rose & Katz Co. (Clothing)<br>131 N. Main St.<br>Phone 3-8989         | Gilbert's Men's Outfitters<br>813 S. Michigan St.<br>Phone 3-5177  |
| Copp Music Shop<br>124 E. Wayne St.<br>Phone 3-1838                   | Buschbaum's Pharmacy<br>2305 Miami St.<br>Phone 3-5222             |
| Elbel Bros. Music Store<br>234 N. Michigan St.<br>Phone 3-5645        | The Book Shop<br>130 N. Michigan St.<br>Phone 4-3388               |
| Sonneborn's Sport Shop<br>121 W. Colfax Ave.<br>Phone 3-3702          | Simons Pharmacy<br>2219 S. Michigan St.<br>Phone 3-0564            |
| Washington Shoe Repair Co.<br>116 W. Washington Ave.<br>Phone 3-0958  | Fay's Jewelry Co.<br>137 1/2 S. Michigan<br>Phone 4-6381           |
| Banfi's Grocery<br>2121 Miami St.<br>Phone 3-5791                     | Sam'l Spiro and Co.<br>121 S. Michigan St.<br>Phone 3-8207         |
| Harry's Cut Rate Flower Shoppe<br>826 S. Michigan St.<br>Phone 2-3144 | Joe the Jeweler<br>113 E. Jefferson Blvd.<br>Phone 2-1756          |
| Babe's Beauty Shoppe<br>1814 Miami Street<br>Phone 4-1642             | Priddy-Tompsett Studio<br>209 Sherland Bldg.<br>Phone 3-6157       |

Carlton Studio State Theatre Bldg. Phone 4-9596	The Girl's Shop 232 S. Michigan St. Phone 2-4237
Karlin's Rexall Drug Store 1832 Leer St. Phone 3-0493	The Gately Co. 321 S. Michigan St. Phone 4-2371
Nye Homestore 1829 Leer St. Phone 3-8487	Coon's Grocery 1633 E. Ewing Ave. Phone 3-0444
Two Legs 118 S. Michigan St.	B. B. Oil Station 2222 S. Michigan St. Phone 3-0827
Dairy Council of St. Joseph Valley 507 Odd Fellows Bldg. Phone 2-3153	Ted's News Stand 102 N. Michigan St.
Steele's Standard Service Station 2302 S. Michigan St. Phone 3-0621	McDonald Studio 116 W. Colfax Ave. Phone 4-8891
Frank Daniels Barber Shop 1305 E. Calvert	Mahowald's Travel Goods Shop 121 W. Washington Ave. Phone 3-1616
Silvers' Fur Shop—Silver Furs 210 N. Michigan St. Phone 3-9050	Benny Feldman 2210 Miami St. Phone 4-2853
Sportland 124 E. Jefferson Blvd. Phone 3-9588	Entzian & Co. Pharmacy 501 E. Calvert St. Phone 3-0808
Herman's Ladies' Ready-To-Wear 123 S. Michigan St. Phone 3-4979	Zimmer Food Markets, Inc. 736 S. Eddy 138 N. Main 1605 L. W. W. Phone 3-5166 Phone 4-6811 Phone 4-4611
Sears Roebuck & Co. 425 S. Michigan St. Phone 4-0141	Aristo Dry Cleaners, Inc. 3201 S. Main St. Phone 4-1155

---

The staff is grateful to MR. MAX BULLOCK and MR. KENNETH DeGROFF for their valuable aid and advice on the photographic work of this yearbook. Cover by ROBERT DUNFEE. Engraving by INDIANA ENGRAVING CO. Printed by McCLAVE PRINTING CO. Photo of building copyrighted by MR. BULLOCK. Senior photos by DeGROFF STUDIO.



