

Randolph County Genealogical Society
June, 2010 Newsletter

We met for our June meeting at the Chester Public Library, in their Community Room, at 5:30pm, for a brief meeting prior to a music and history program we co-sponsored with the Chester Library. We had moved into our new R.C.G.S. quarters on Saturday, May 29th and have been busy unpacking and getting the research library set up and everything organized. We had to discuss insurance, telephone and internet service and those things you have to take care of when you move into a new place. We were pleased to have members, Don and Ann Rybolt Lahr, with us. They came here from Virginia to attend Ann's high school class reunion last Saturday, and stayed to attend our Genealogy meeting and program.

At 6:30pm, we enjoyed a program, "Fiddle Music and Tall Tales", presented by Dennis Stroughmatt. Mr. Stroughmatt is a member of the Illinois Humanities Council Road Scholars Speakers Bureau and has studied the French Creole language extensively, played music in the Cajun country of Louisiana and has spent time studying in Quebec. We heard about the early French residents who lived here in our area when it was still the "Illinois Country", before Illinois became a state. We heard stories about the French and their customs, their language and where they moved and settled. Many of the early French settlers worked in the lead mines, many still live in the "Old Mines" area of Missouri. It was a pleasant evening, ending with fellowship and refreshments.

As I said, in the beginning, we have moved into our new home at #13 Westwood Drive, Steeleville, Illinois, 62288. We will give you our telephone number and e-mail address after we get all hooked up.

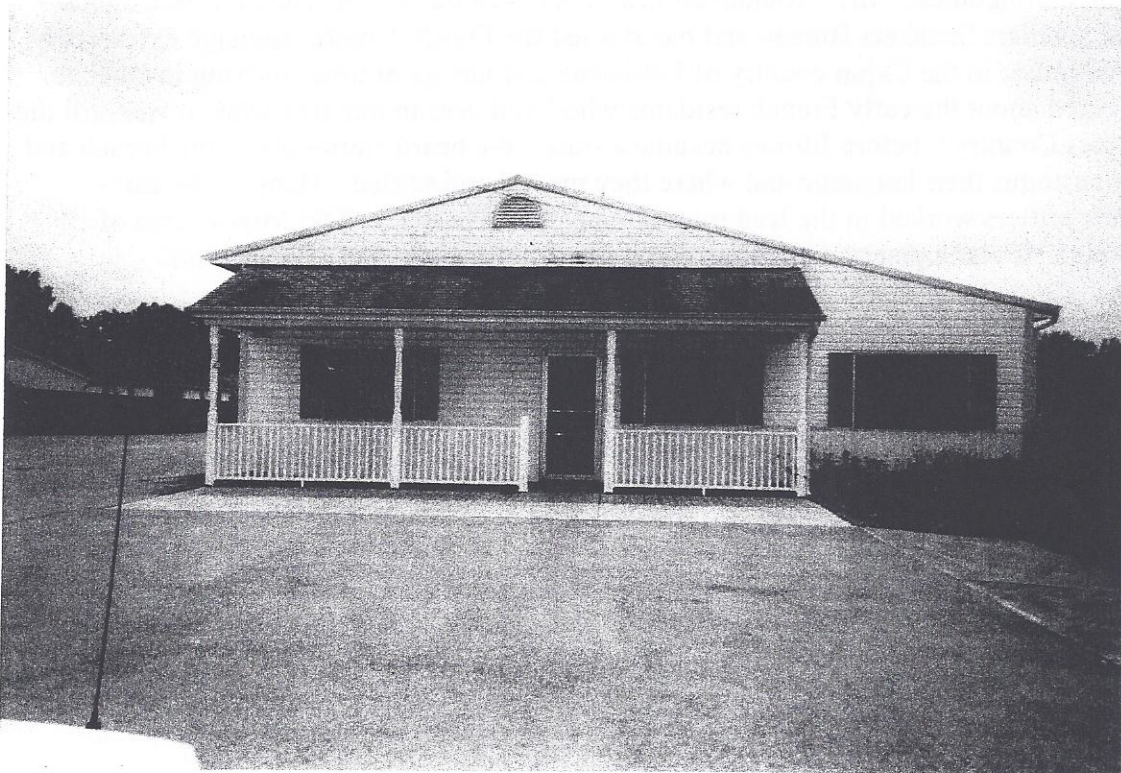
We have all the boxes unpacked—the cardboard recycled—everything has been put away, books put on the shelves. We still need to check over the shelves, see that all the books are placed where they need to be, familiarize ourselves with the library set-up, get everything ready to re-open. We plan to re-open our office and Research Library on Monday, June 21, 2010. Our office hours will be Monday, Tuesday and Wednesday, each week, 9am to 2pm. We will close for major holidays that fall on one of the days that we are scheduled to be open. Also, in the winter, if we have heavy snow or icy conditions, we will not risk trying to drive the roads until the highways are open—we volunteer staff members each have a distance to drive in to get there.

We are excited about our "new home", and everything is fitting in, and we think you will enjoy, and be comfortable, coming there to research. We are happy to be back into our "genealogy work", seeing all of you again.

We have not been idle during our long "break", we have gleaned material from microfilm, abstracted records and have published several new books for our publications list. We have several projects planned to expand our resources, make our library a better place to research.

We want to thank you for being patient with the situation and the inconveniences it produced during the time we were closed. Because we had to go to Perryville, cross the Mississippi into Missouri, where our copier was stored, to print our Quarterlies and newsletters, we didn't get a monthly mailing out to you. We combined them and got the mailings out less often. We will get back to our former, regular schedule, as soon as we get going again.

I took a picture, to give you some idea of what our new home looks like. If you are not familiar with the street locations in Steeleville, Illinois, I will tell you how you can find us. As you drive into Steeleville on State Route # 150, heading East, coming in from Chester or Sparta, at the edge of town, Westwood Drive is your first **right turn**. Drive one block, the street turns **left**, and we are the first building on your right. As you make your left turn, you will see a row of blue metal recycle bins, before you get to our place at #13.



Enjoy your summer! We hope you will come see us.

June James
Randolph County Genealogical Society
13 Westwood Drive
Steeleville, Illinois 62288