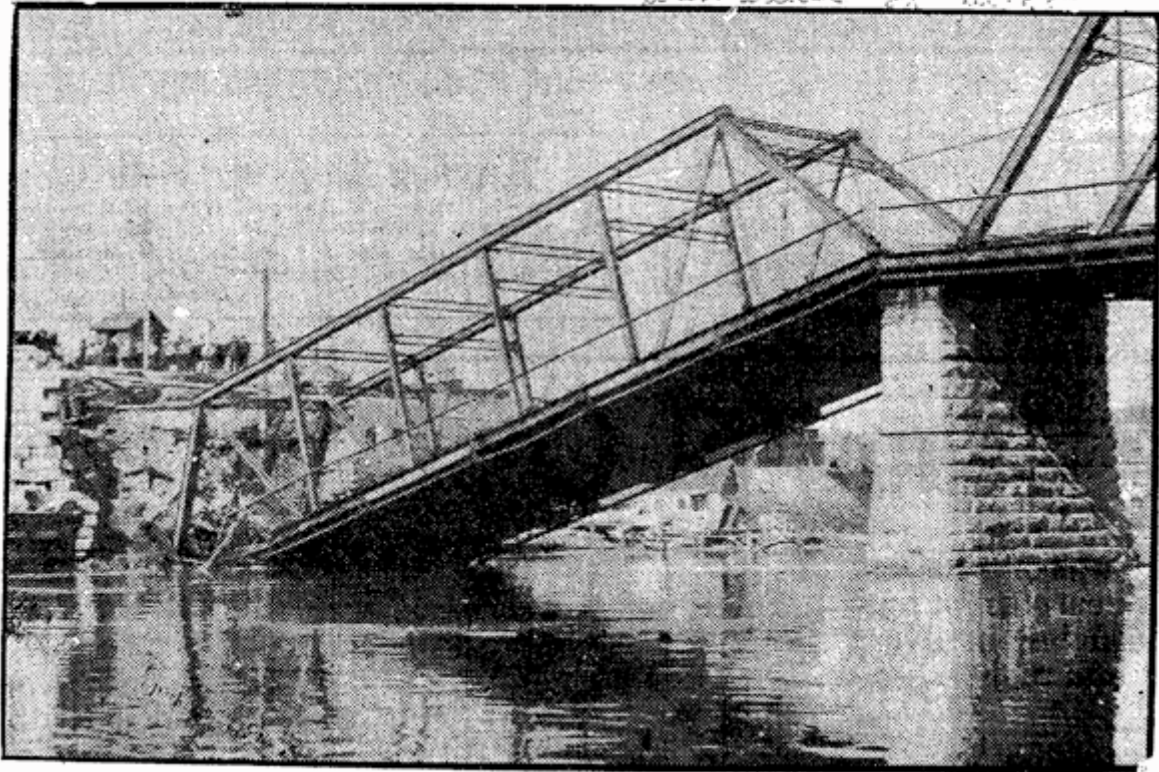


BROKEN SPAN OF RIVER BRIDGE



RACINE STREET (NOW N. HUMBOLDT AVE) BRIDGE

(From the Milwaukee Sentinel, May 6th, 1922)

This is best illustrated by the events of Friday, May 5th, 1922, when a 60-foot span of the 40-year old river bridge collapsed into the river. At the time it was the oldest bridge in the city, and had been constructed according to pre-Socialist principles of civil engineering. Traffic had been unusually heavy on the span for the year previous, when the **North Avenue** bridge was under construction. It probably did not aid in the bridge's integrity that it had been jacked up on stilts to allow a dredge to pass beneath it sometime previously for river improvements. There were no injuries associated with the collapse, the beginnings of which had been noticed earlier in the day. The bridge's descent was graceful, apparently, since a jug of water was found on the bridge's surface, undisturbed, after the collapse.

<http://www.milwaukee-world.com/blog/2008/05/humboldt-bridge-plans-unveiled.html>