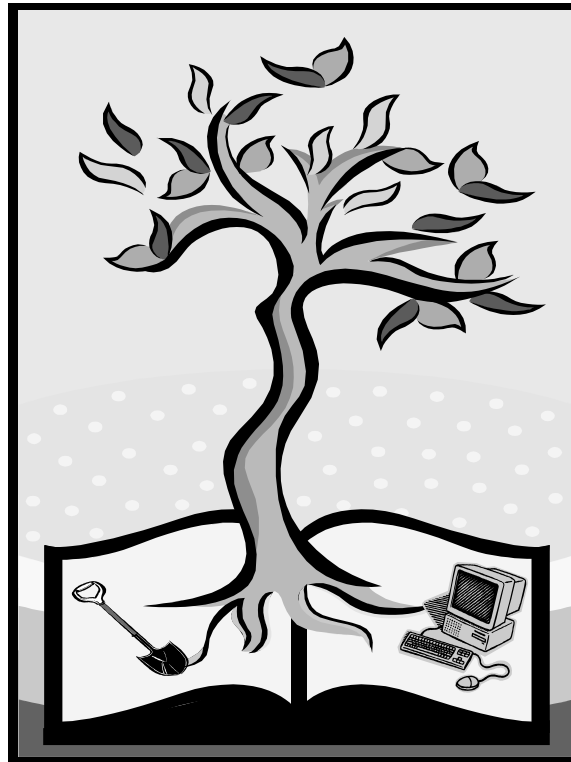


Sno-Isle Genealogical Society
19827 Poplar Way
Lynnwood, WA 98036
www.rootsweb.com/~wasigs/index

Genealogy & Technology NEW TOOLS FOR DIGGING ROOTS



SNO-ISLE GENEALOGICAL SOCIETY FALL SYMPOSIUM

SATURDAY, OCTOBER 20, 2007

8:30 am to 3:45 pm

Lynnwood Elks Lodge
6620 196th Street SW
Lynnwood, Washington

FINDING DIGITIZED RESOURCES OF GENEALOGICAL VALUE



Gary A. Zimmerman, Ph.D., will review a variety of websites that present digitized books and other publications. He will teach how to effectively search for these resources by using the internet. Attendees will receive access to a website page that will provide hot-links to each site mentioned in the lecture.

President of Fiske Library, Gary has taught genealogical research since the 1960's.

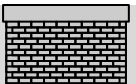


INTERNET-BASED GENEALOGICAL RESEARCH

How do you get started using the Internet for genealogical research? Can you trust what you find? What websites do you look at first? How can you locate new websites to research? What are e-mail lists, e-zines and how do you use them?

David A. Ault, Ph.D., serves as the Chair of the Seattle Genealogical Society's Computer Interest Group.

SOLUTIONS TO BRICK WALLS



Margaret Robe Summitt, Ph.D., will discuss the general principles in defining a search, analyzing sources, evidence and keeping focused. She will talk about the uses of research calendars and illustrate how she solved some cases from her own research.

A member of Sno-Isle Genealogical Society, Margaret lectures extensively throughout the Puget



USB DEVICES, TIPS & TRICKS, QUESTIONS & ANSWERS

USB devices — what they are and why things can and do go wrong. Bring your computer questions for the Q & A part of this lecture.

David C. Abernathy is the Computer Special Interest Chairman for Eastside Genealogical Society and founder of the very popular Komputer Enthusiasts of Greater Seattle.

Symposium Details:



Schedule

8:30 - 9:00am	Registration
9:00 - 9:15am	Opening Remarks
9:15 - 10:30am	Gary Zimmerman
10:30 - 10:45am	Break
10:45 - 12:00 noon	Dave Ault
12:00 - 12:45pm	Lunch Break
12:45 - 2:00pm	Margaret Summitt
2:00 - 2:15pm	Break
2:15 - 3:30pm	David Abernathy
3:30 - 3:45pm	Closing Remarks



Breaks and Lunch

Door Prizes, Silent Auction and Raffle Baskets will be given out on the breaks. (Raffle tickets may be purchased ahead of time with your registration or are available at the registration table.)

Items range from Genealogical Books, Scrapbook Surprise, Tool Time, Office Organization, Tea Time, Gift Cards, Certificates and more.

SIGS will have used Genealogical Books for sale.

Fresh lunches, included in the registration fee, are provided by AP Barbara's, a family owned Lynnwood Restaurant. The lunch will consist of a choice of a substantial roast beef, turkey or veggie sandwich on homemade whole wheat bread, (including separate condiments), with a fruit cup, fresh baked cookie and beverage.

Coffee, tea, soda, water and cookies will be available on all breaks.



Location/Parking

Lynnwood Elks Lodge
6620 196th Street Southwest
Lynnwood, Washington

From I-5 Southbound

Take exit 181 (524 West) onto 196th Southwest. Continue west on 196th, crossing over Highway 99, (Jiffy Lube is before you cross 99 and James Village Shopping Center will be to your right after you cross 99.) Continue through the next stop light at 64th Avenue (coffee stand to your right). After going through the light look to your left. You will pass the Wells Fargo Bank and the Lynnwood Ice Rink. The Elks Lodge is on your left after the Ice Rink. Look for the parking lot with the tan colored buildings.

From I-5 Northbound

Take Lynnwood/44th Avenue exit 181A; left onto 44th, left onto 196th Street SW. (Fred Meyer will be to your right.) Continue west on 196th, crossing over Highway 99, (Jiffy Lube is before you cross 99 and James Village Shopping Center will be to your right after you cross 99.) Continue through the next stop light at 64th Avenue (coffee stand to your right). After going through the light look to your left. You will pass the Wells Fargo Bank and the Lynnwood Ice Rink. The Elks Lodge is on your left after the Ice Rink. Look for the parking lot with the tan colored buildings.

Parking

The Symposium is accessible to persons with disabilities. Special needs parking is available on the north side of the building with an entry door located in front of the parking area.

Parking spaces are available in adjacent parking lots.

Cancellation Policy:

SIGS will not provide refunds for cancellation unless unforeseen circumstances cancel the entire event.

SIGS SYMPOSIUM REGISTRATION

Please Register Early, Space is Limited!

	NUMBER	COST	TOTAL
SIGS Member Register before 10/10/2007		\$ 30.00 Includes Lunch	
Non-SIGS Member Register before 10/10/2007		\$ 35.00 Includes Lunch	
Register after 10/10/2007		\$ 40.00 Includes Lunch	
Raffle Tickets \$1 each or 6/\$5			

TOTAL: _____



Lunch Selection (select one):

_____ Roast Beef _____ Turkey _____ Veggie

Name (please print)

Address

City, State, Zip

Phone (optional) E-Mail (optional)

Please make check payable to SIGS.
Send check with completed form to:

Carol Ripley, Registrar
SIGS
19827 Poplar Way
Lynnwood, WA 98036

Questions? Email SIGS at: SIGS@Alderwood.org
or call: 425-775-6267