

EASTSIDE GENEALOGICAL SOCIETY

BULLETIN BOARD



MARCH/APRIL 2013
VOLUME XXXI, NUMBER 4

The Eastside Genealogical
Society

P.O. Box 374
Bellevue WA 98009-0374
www.rootsweb.ancestry.com/~wakcegs/

Please Note: Change in Meeting Location for March!!!

MARCH EGS MEETING

Date: Thursday, March 14, 2013
Time: Welcome New Members 6:30 PM
 Meeting Begins 7:00 PM
Location: **First Presbyterian Church of Bellevue**
Note Change
1717 Bellevue Way NE, Bellevue, WA 98004
Topic: *DNA Overview and Sharing Our DNA Experiences*
Speaker: Bob Barnes

About The Program: Bob will review the basics of DNA for genealogists. Several EGS members will share their successes or failures with DNA testing. Bring your questions.

APRIL EGS MEETING

Date: Thursday, April 11, 2013
Time: Welcome New Members 6:30 PM
 Meeting Begins 7:00 PM
Location: **Redmond Library —Note Location Change**
Topic: *Civil War Military Records at the National Archives*
Speaker: Eric Stroschein

Eric is a member of the Skagit Valley Genealogical Society and owns an heir tracing firm in Mount Vernon, Washington. He regularly attends national conferences as well as many genealogical institutes, including the Institute of Genealogical and Historical Research, National Institute of Genealogical Research, Genealogical Research Institute of Pittsburg, Salt Lake Institute of Genealogy, and the International Society for British Genealogy and Family History. Eric has published articles in the NGS Magazine. His pursuit of personal education has transcended into a pursuit of educating genealogists in the dizzying array of records and techniques available today. Eric was recently elected the President of the Puget Sound Chapter of the Association of Professional Genealogists and is the education chair of the Skagit Valley Genealogical Society.

About the Program:

Millions of soldiers fought and died in the Civil War. These military records have proven themselves time and time again to be a genealogical gold mine. Not only are there pension records but also medical, regimental, pay, enlistment, prison, hospital records and so many more.

INSIDE THIS ISSUE:

President's Message	2
Welcome New Members	3
EGS Board Meeting Minutes	3
New On The Bookshelf	4
News from Salt Lake City FHL	5
Civil War Read-In	6
Upcoming Local Events	7
HathiTrust Digital Library	8
Meeting & SIG Calendar	10
EGS Contacts	11

PRESIDENT'S MESSAGE

I would like to take time to thank some people. It's a bit of a cliché to say that there are a small group of dedicated people who keep an organization running but, like all clichés, there is some truth to it. Eastside Genealogical Society has some of the most competent and dedicated volunteers who do all the "heavy lifting" to keep our organization running.

I would like to thank Jack and Jean Newman for all the years they have been putting together the newsletters to mail and then driving around to different libraries to distribute the rest.

And Kim, I know we have thanked you in the recent past but I want to express our admiration for the amazing job you do in, not just assembling the newsletter and publishing it, but also all the extra time you take to make sure that other notices get sent out to the members.

Sarah Fleming is another volunteer who has chaired the Book Committee for a number of years and then, on top of that, she chairs the Program Committee. And just so you know, she is the Program Committee. Finding interesting topics and people to present them is a challenging task and Sarah has done a fabulous job.

Dorothy Mehrer has spent a number of years as the Membership Chair and, that too, is a big task.

Dorothy Pretare is our dedicated Publicity Chair and has taken on the task of Greeter at our meetings.

Winnie Sihon has made sure that we have people to help new researchers in the Bellevue Library. Thank you Winnie. You are an important part of our outreach program.

And, speaking of outreach, Bob Barnes has spent countless hours teaching classes at libraries around the region and now at Bellevue College for their Telos Program. That's a huge mission.

Sharron Filer, long time Trustee, has kept the Board on the straight and narrow so that we don't make errors in our procedures. It's important that we do things right so EGS doesn't contradict its own bylaws and rules.

As a Past President and program Chair, Judy Meredith has lots of good and helpful advice for the Board.

Vicky Quackenbush is a fairly new member but she's already become our wonderful new Secretary and is on Sarah's Book Committee.

And a big thank you to Kay Wilson, our Treasurer. Keeping our finances in order and on track is a bit of a chore but Kay makes it look easy. She is probably the most organized person I've ever met.

There are so many more volunteers that I haven't mentioned in this article but your efforts are so much appreciated.
Carol Pattison, EGS President

FREE GENEALOGICAL RESEARCH HELP

Genealogical research help is available at the Bellevue Regional Library, located at NE 12th St. and 110th Ave. NE in Bellevue. Eastside Genealogical Society volunteers are waiting to help you with problems and questions. They are available in room 6 on the second floor of the library, to the left of the reference desk. Hours are on the 1st and 5th Tuesday evenings from 7:00-9:00 PM and Wednesdays from 1:00-3:00 PM.

EGS BOARD MEETING – SUMMARY, JANUARY 2013

Present: Carol Pattison, President; Vicky Quackenbush, Secretary; Sarah Fleming, Book Acquisitions; Judy Meredith, Past President; Sharron Filer, Trustee

Education: Bob Barnes TELOS class begins Monday at BCC.

Membership: Clip on holders for nametags will be provided for those who dislike pins.

Programs: January program by Bob Barnes on Ancestry.com, February “Brick Walls” by Sarah Fleming, and March DNA prepared by Bob Barnes and Kay Wilson.

New Business: March general meeting will be at the Presbyterian Church on Bellevue Way.

Motion: To contribute \$50 to Cyndi’s List to help in her copyright infringement lawsuit. Personal donations will be asked for at the general meeting.

Discussion: Procedure for changing fiscal year to Sept 1-Aug 31. Look into reprinting the King County Probate Index.

WELCOME NEW MEMBERS

Please welcome the following new members:

- ◆ Gerry Sue PALLAS
- ◆ Susan STEWART researching WILLIAMS, GUEST, LANGLEY and RUDLAND in England and Wales; and AIKEN, JOHNSTON, AND QUIM in Ireland and Scotland.
- ◆ Carol STROMBERG

LIBRARY AND OTHER VOLUNTEERS NEEDED

Volunteers are needed for the first and third Wednesday afternoons from 1:00 to 3:00 PM. Jack Newman is resigning after many years of providing help at these times. An assistant for our Library Chair is also needed. Anyone interested should contact Winnie Sihon at wsihon@comcast.net or 425-793-5424. Help Desk volunteers are needed for other times as well.

GERMAN DIGITAL LIBRARY

Everyone should have access to Germany's cultural heritage. That's the goal of a new multimedia portal, the German Digital Library. It encompasses sources from 1,800 cultural and academic institutions. The website is still in the trial phase and there are a few rough edges to smooth out, but that will soon be resolved. The Deutsche Digitale Bibliothek (DDB), or "German Digital Library," is set to be an online collection of knowledge like no other. The German Digital Library aims to be a network of culture and research, a unique archive of the cultural consciousness of Germany and Europe, since the DDB constitutes another building block of the European online culture portal "Europeana," a single access point to millions of books, paintings, films, museum objects and archival records that have been digitized throughout Europe. You can find the German Digital Library at <http://www.deutsche-digitale-bibliothek.de/> and can find an article written about it at <http://www.dw.de/germanys-cultural-heritage-goes-digital/a-16424664> (*From GeneaNet Genealogy Blog*)

MARRIAGE RECORDS CHECKLIST

Marriage records encompass more than just a marriage certificate, which is lucky for you if your ancestors' wedding happened before vital record-keeping began where they lived. Your ancestors' weddings generated all kinds of records. Here is a link to a checklist of 12 types of marriage records to look for:

http://familytreemagazine.com/article/Marriage-Records-Checklist?et_mid=603222&rid=2711020 (*From Family Tree Magazine Online*)

NEW ON THE BOOKSHELF

The following books, purchased by the Eastside Genealogical Society or donated, have been added to the genealogy collection at the Bellevue Regional Library. Look for these books in the Genealogy Collection on the second floor. Note: You can request that books in the Bellevue Genealogy Collection be sent to another King County Library for your use in that library. This would be particularly useful during construction at the Bellevue Library.

► ***A History of Saar Pioneer Cemetery and Its Inhabitants.*** South King Co. Gen. Soc., 2011. 400 pp. R929.509797 HIS

In 2005, the South King County Genealogical Society took on the monumental task of restoring the long-neglected and often-vandalized Saar Pioneer Cemetery, located at 91st and 212th Way, Kent, Washington. The cemetery is the final resting place of nearly 200 early pioneers of Kent and surrounding areas. Their stories are documented in this book of over 400 pages, which was researched and compiled by members of the South King County Genealogical Society. The accounts illustrate the commitment these pioneers made in migrating across this country to build new homes and lives in the early White River Valley.

► ***Lands of the German Empire and Before, 2nd ed.*** Wendy Uncapher. Origins, (2004) 2008 repr. 144 pp. R943.086 UNC 2004

Finally a book that explains the history of the German Empire states. The book also identifies land divisions by kreise (counties) and states - not towns. Each state has a historical timeline plus maps. This book explains what and where was Prussia. Indexed with over 100 maps. (Does not show cities on maps.) This book is intended as a quick reference for lands that eventually ended up in the German Empire.

► ***The Winthrop Fleet: Massachusetts Bay Company Immigrants to New England, 1629-1630.*** NEHGS, 2012. 832 pp. R974.402 AND

In early 1629 the Massachusetts Bay Company received a royal charter that allowed the Company to carry on the work, begun earlier in the decade by the Dorchester Company and then the New England Company, of developing permanent settlements in New England. During 1629 the Massachusetts Bay Company sent settlers to Massachusetts Bay, mostly young, single men, servants either of the Company itself or of particular merchants and gentlemen associated with the Company. Included among these 1629 immigrants were three ministers of Puritan leanings, reflecting the religious beliefs of the Company's leaders.

By late 1629 John Winthrop of Groton, Suffolk, had been made Governor of the Company, and planning began in earnest for sending a larger group of settlers to New England. In the spring of 1630 Winthrop led more than a dozen vessels, with about seven hundred passengers, across the Atlantic. This small armada of 1630 has come to be known as the Winthrop Fleet. The somewhat broader settlement activities of 1629 and 1630, of which the Winthrop Fleet was the larger part, have been termed the Winthrop Migration.

This volume describes the organization of the Winthrop Migration and the Winthrop Fleet in some detail, and provides detailed genealogical and biographic information on each of the more than two hundred families and individuals who came to New England in 1629 and 1630 as part of this movement. Each sketch begins with information on the English origin of the immigrant, when known, and the evidence for his or her arrival in 1629 or 1630. This is followed by biographical data on education, office holding and the like, and genealogical data, including birth, death, marriage and children. The sketches often include information on the place of each immigrant in the migration process, whether as master or servant, and of unusual and interesting features of their lives.

► ***Guide to Genealogical Resources in Cincinnati & Hamilton County, Ohio, 6th ed.*** Connie Stunkel Terheiden & Kenny R. Burch, comp. Hamilton County Chapter of the Ohio Gen. Soc., 2009. 78 pp. R929.377177 TER 2009

This indispensable guide to research in Cincinnati and Hamilton County, Ohio, covers churches, cemeteries, vital records, various repositories and their collections, publications for further research, annexation information, and names of current and past communities and post offices. Also contains several maps.

► ***Georgia Research: A Handbook for Genealogists, Historians, Archivists, Lawyers, Librarians, and Other Researchers, 2nd ed.*** Robert Scott Davis & Ted O. Brooke. Georgia Genealogical Society, 2012. 300 pp. R929.107207 DAV 2012 This is a major revision of the 2001 edition. (*Continued next page*)

► ***Stuck in the Mud: The History of Warm Beach, Washington.*** Penny Hutchison Buse. Snohomish Pub. Co., 2011. 362 pp. 979.771 BUS, in the Northwest collection [donated by author]

If you are familiar with the story of Vancouver's 1892 mapping expedition through Puget Sound, you'll understand the reference to the title of this great new history. It includes hundreds of great stories of logging history, real estate development, Kayak Point and Port Susan – that shallow bay between northwestern Snohomish County and Camano Island. Contains 402 illustrations, many in color.

If you have a suggestion for a genealogy-related reference book to add to our collection at the Bellevue Regional Library, or if you have one to donate, please contact Sarah Fleming at sarahrosefleming@earthlink.net or 425-957-1134.

NEWS FROM THE SALT LAKE CITY FAMILY HISTORY LIBRARY

◆ If you are planning a trip to the Family History Library in Salt Lake City, you need to be aware of their new holiday schedule. See https://familysearch.org/locations/library_hours for the 2013 calendar. They will now be closed on many Federal holidays and close early the Saturday before the Monday holiday as well as a few other days. You would be terribly disappointed if you showed up for a full week of research and discovered the library closed for a whole day. *(Submitted by Sarah Fleming)*

◆ **Policy Change for Patrons Requesting Photocopies**
From the Family History Library in Salt Lake City, Utah. Please note the following change in the policy for patrons who are requesting copies from the Family History Library in Salt Lake City, Utah.

All requests for information copied from films, book pages, CDs, marriage, death or birth certificates, wills and/or deeds, etc. will be copied in digital format and emailed to patrons in a zipped PDF or JPG file format. There is no charge for this service if we are able to email to information to patrons.

If a patron does not have an email address, we can mail the information to the patron using the US Postal Service.

However, as much as possible, we will rely on emailing all requests for information through the internet. If patrons do not own a computer or do not have an email address, they can request to have the information emailed to their local Family History Center, where they can print the information at the center.

Patrons should request copies by emailing their request to Photoduplication@familysearch.org. All requests MUST include the following information:

- Film or Fiche number
- Item number
- Name of Individual(s) referred to in the record
- Title of the record
- Name of parents, spouse, grantor, grantee, etc.
- Event type (Birth, Death or Marriage)
- Complete event date and place
- Event place (county, parish, township, etc.)
- Volume or page number
- Registration or Certificate Number
- Any other information that will help us locate your record. *(Submitted by Carol Pattison, as well as from Eastman's Online Genealogy Newsletter and is copyright by Richard W. Eastman. It is re-published here with the permission of the author. Information about the newsletter is available at <http://www.eogn.com>.)*



JOIN WASHINGTON'S CIVIL WAR READ-IN!**The Civil War in Washington Territory**

Democratic appointee James Tilton arrived in Olympia, Washington Territory in 1855, accompanied by his family and a young black slave, named Charles Mitchell. Mitchell fled to the Crown Colony of Victoria in September 1860, a fugitive on a tiny Puget Sound underground railroad. Here, the San Francisco Daily Evening Bulletin, October 18, 1860, reprinted an article on the flight from a Washington Territory newspaper.

Join Washington's Civil War Read-In!

In 2013, hundreds of researchers will fan out across Washington State, visiting archives, museums and libraries to read the primary documents of our history, 1857-1871. We invite you to attend a training and to join the Read-In. Participants will read an assignment in newspapers, classic published histories, and archival material of all sorts. Join us to discover the forgotten Civil War experience in Washington Territory, and report your discoveries to make a permanent record – an on-line searchable database of Civil War-era citations, hosted by the Washington State Historical Society.

During the 150th anniversary of the Civil War, we in Washington know little of our own experience of the war. However, the war is not only of significance in the battlefield states, but also here in the far northwest, where settlers argued through the very same issues that tore the United States apart. As Washington State Historical Society prepares to launch a major exhibition, "Civil War Pathways," in February 2014, we seek your help in learning more about Washington Territory during the antebellum, wartime and early Reconstruction periods.

Get involved!

- Attend a training, January through May 2013
- Take a Read-In assignment, in newspapers or documents
- Spend a month of spare time, carefully reading and gathering evidence (AND you have two months to actually do the work....)
- Document your reading in the project templates
- Upload your results to the Project

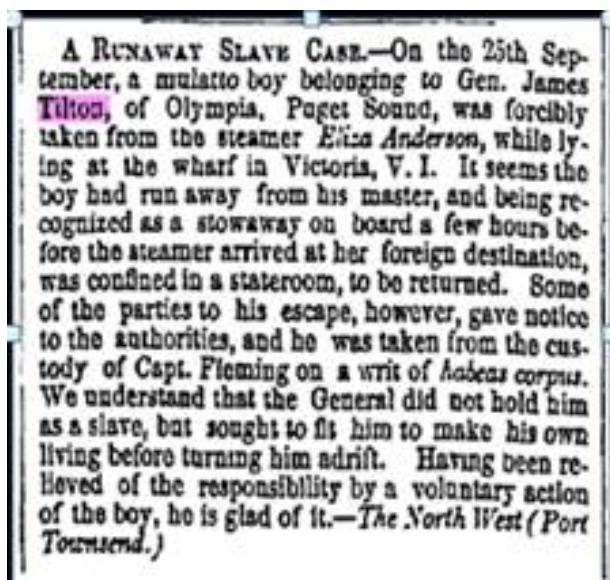
Here are the Civil War Read-In Trainings

Saturday, February 9, 10-4 Seattle
 Wednesday February 13, 10-4 Seattle
 Saturday, February 16, 10-4 Vancouver
 Saturday, February 23, 10-4 Olympia
 Saturday, March 2, 10-4 Tacoma
 SUNDAY, March 10, 12-6 Walla Walla
 Saturday, March 23, 10-4 Yakima
 Saturday, April 13, 10-4 Cheney
 Saturday, April 20, 10-4 La Conner

We will build a searchable database from your work, which will be available to all researchers on the WSHS website. And we'll also get all the readers together at the conclusion of the Read-In, to meet one another and celebrate this great accomplishment.

Curious? Interested? Ready to sign up for a training? Have any questions? Want to receive the FAQ in email?

Contact Lorraine McConaghy at Lorraine.mcconaghy@wshs.wa.gov or l.mcconaghy@comcast.net



UPCOMING LOCAL EVENTS

1. **South King County Genealogical Society and Puget Sound Chapter of the Association of Professional Genealogists Presents a Seminar "What's Your Story?"** on Saturday, March 16, 2013, 9:00 AM to 3:45 PM, at The First Baptist Church of Kent, 11420 SE 248th Street, Kent, WA 98030. Speakers include:

- Eric Stroschein 'Generations Detective' -- Eric will be the Keynote Speaker lecturing on *Who Do You Think You Might Be* and will speak on two additional topics, *Rooting Out the Stories: Using a Reasonably Exhaustive Search to Find Your Family* plus *Is Your Family Story True, False, or Something in Between?*
- Trish Hackett Nicola will speak on *Rebecca Lena Graham's Fight For Her Inheritance*.
- Steven Morrison will lecture on *Introduction to Sources* and in the afternoon will speak on *Conflicting Sources—Now What Do I Do?*
- Becky Hanich from the LDS Church will show us how to effectively use all aspects of the LDS Family Search site, including the new Family Tree system.
- Winona Laird will lecture on Scottish ancestors.

Registration Form access:

🕒 Email skcgs.seminar@gmail.com to let us know you will attend

🕒 In order for us to estimate the size of the sessions, please include the sessions you are interested in attending

🕒 COST: \$40 for members of SKCGS or PS-APG; \$45 for non-members. Non-members who wish to attend the seminar can join SKCGS and receive a 14 month membership for the price of 12, and attend the seminar at the membership rate. Membership is \$15 for individuals and \$22.50 for dual. Newsletters are delivered electronically for free. An additional charge applies to receive a paper copy of the newsletter. Please complete a Membership Application and return it with your registration form.

🕒 BYOSL Bring your own sack lunch (Coffee, Tea and Water will be available) For more information see

<http://www.rootsweb.ancestry.com/~waskcgs/>

2. **DAR Cascade Chapter Meeting Schedule:**

March 12, 2013 - 10:30 AM, Program: The Irish in the Northwest, Speaker: John Keane, Honorary Consul of Ireland and past President of the Irish Heritage Club

April 16, 2013 - 10:30 AM, Program: Making History Come Alive, Speaker: Dori Jones Yang, former foreign correspondent in Hong Kong and Business Week journalist will discuss her two historical novels, *Daughter of Xanadu* and its sequel, *Son of Venice*.

Contact Lanabeth Horgen for more information at

lanabeth_h@yahoo.com

3. **The Annie Pulliam Chapter DAR** meetings are held on the second Saturday of each month beginning at 10:00 AM at the Mt. Si Senior Center, 411 Main Ave. S., North Bend, WA. Genealogy help is available after every meeting.

March 9, 2013 - Program: "Needlepoint Treasures at the DAR Museum"

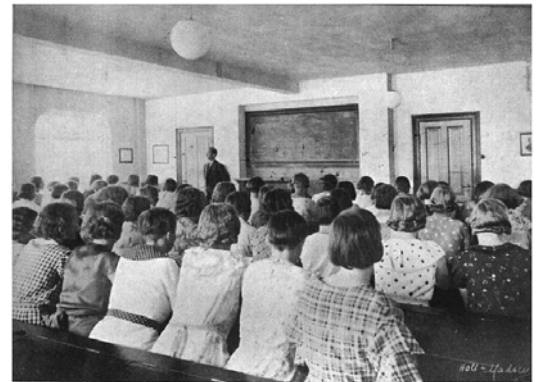
April 13, 2013 - Annie Pulliam Chapter 3rd Anniversary Party (location to be determined)

May 11, 2013 - State Regent, Janelle Braithwait

Prospective members, friends and well mannered children are always welcome at our meetings. Please join us! For more information, contact Katey Purgatorio at anniepulliamdar@gmail.com.

4. **The Redmond Historical Society** will meet on Saturday, March 9, 2013, 10:30 AM to Noon, at The Old Redmond Schoolhouse Community Center, 16600 NE 80 Street, Redmond, WA. Andy Weiss will share memories of his European immigrant family which came to Salmonberg (Redmond) in about 1872. He will bring to life what it was like living here at that time, the local culture, no electricity or running water, working in the woods, when the timber companies and railroads were king.

In April, Richard Blumenthal will be speaking on Maritime Place Names. To receive the monthly newsletter, contact the Society office at 425-885-2919, or email your request to info@redmondhistoricalsociety.org. Books, calendars, note cards, free historic walking tour brochures, and the book, *Redmond Reflections*, are available in our office, which is open Monday, Wednesday, and Friday, 9:30 AM to 4:30 PM, and by appointment. Visit our website: redmondhistoricalsociety.org.



HATHITRUST DIGITAL LIBRARY BY DAWNE SLATER-PUTT, CG(SM)*

Google Books and Internet Archive often are the go-to sources for full-text digitized books online. Another, perhaps lesser-known site is the HathiTrust Digital Library at <http://www.hathitrust.org>, self-described as a “partnership of major research institutions and libraries working to ensure that the cultural record is preserved and accessible long into the future.”

More than ten and a half million total volumes have been digitized by HathiTrust, including more than five and a half million book titles and more than 275,000 serial titles. More than three million of these items (about thirty-one percent) are copyright-free and may be viewed in full text. The text of the remainder of the volumes can be searched by keyword to determine the frequency of the word in a particular item and the page numbers on which it appears.

Materials on the HathiTrust website pertain to all subjects, but many of them are of interest to genealogists. Examples are: *The Thirty-Sixth Wisconsin Volunteer Infantry* by James M. Aubrey, <http://babel.hathitrust.org/cgi/pt?id=nyp.33433081800694#page/3/mode/1up> and *Album of Genealogy and Biography, Cook County, Illinois*, published by the LaSalle Book Company of Chicago in 1900, <http://babel.hathitrust.org/cgi/pt?id=uiuo.ark:/13960/t9z03296v#page/n6/mode/1up>, both of which may be viewed in full-text, and the Grand Rapids City Directories collection, including forty-eight items, twenty-three of which may be viewed in full-text, <http://babel.hathitrust.org/cgi/mb?a=listis;c=1648165062>.

It is possible to do a catalog search by author, title, subject, International Standard Book Number (ISBN) or International Standard Serial Number (ISSN), publisher, series title or year of publication, or you can search by keyword(s) in the full text of the resources in the HathiTrust Digital Library. Another way to find items of interest is to browse Collections. Collections are literally collections of HathiTrust titles that have been grouped by users according to whatever criteria the users choose, whether the items have a subject in common or are simply titles of interest to that particular user. A brief scan of the website brought to light the following examples of Collections that could be of interest to genealogists:

- Ancestry and Genealogy (2760 items), <http://babel.hathitrust.org/cgi/mb?a=listis;c=332123463>
- Civilian Conservation Corps (13 items) <http://babel.hathitrust.org/cgi/mb?a=listis;c=2039844782>
- Civil War Nurses Personal Narrative (20 items), <http://babel.hathitrust.org/cgi/mb?a=listis;c=1220507110>
- Genealogy of the Cook-Seerings (71 items), <http://babel.hathitrust.org/cgi/mb?a=listis;c=457445765>.

If you have not yet heard about the HathiTrust Digital Library or stumbled upon it during your online research forays, it is well-worth a look. *CG* & “Certified Genealogist” are service marks of the Board for Certification of Genealogists, and are used by authorized associates following periodic, peer-reviewed competency evaluations. (*From Genealogy Gems: News from the Fort Wayne Library No. 106, December 31, 2012*)

LINKS OF INTEREST

- *Family Secrets* by Deborah Cohen: A book review of Family Secrets — how we have covered up our shameful histories from the Victorians to present day. <http://www.telegraph.co.uk/culture/books/bookreviews/9839484/Family-Secrets-by-Deborah-Cohen-review.html>
- People of Timbuktu save manuscripts from invaders. The Hamed Baba Book Repository holds one of the world's most precious collections of ancient manuscripts in Timbuktu, Mali. Islamists claimed they burned most of the holy books there, and for eight days the fire alarm blared inside the repository. But because of the ingenuity of the people of Timbuktu, who hid manuscripts in millet bags, the al-Qaida-linked extremists succeeded in destroying only 5 percent of the collection. Read the story at <http://bigstory.ap.org/article/people-timbuktu-save-manuscripts-invaders>
- Want to find a blog on a particular genealogical topic or location? Try looking at Geneabloggers, who list over 3000 different blogs. Find the listing at <http://geneabloggers.com/genealogy-blogs/>
- Have a Kindle Fire and want to use it for genealogy? Here is a link to a series of articles that can help you: <http://genblogjulie.blogspot.com/2013/01/using-kindle-fire-for-genealogy.html>
Scroll down on the page for more related articles.



THE CLALLAM COUNTY (WASHINGTON) GENEALOGICAL SOCIETY OPENS A RESEARCH CENTER

The Clallam County Genealogical Society has opened a research center at 402 E. Lauridsen Blvd. — across from the Port Angeles Library. It will be open Tuesdays through Fridays. Volunteer staff members can assist visitors in the use of the center's books, records and genealogical subscription databases.

The center offers some 3,000 books, as well as maps, microfilm and microfiche, three computers and printers. The material available includes genealogical reference materials from all over the world as well as a wealth of Clallam County materials. One room is dedicated just to Clallam County records.

Details may be found at <http://goo.gl/XVZoL> and on the society's web page at <http://www.olympen.com/ccgs/>.

A NEW GUIDE TO VIRGINIA GENEALOGY

Lots of guides to Virginia genealogy have been published over the years but this new one is quite different from the others. It could only be created in an online environment. The new guide on the FamilySearch Wiki can help you discover if anyone has studied YOUR Virginia genealogy.

The new guide works by searching genealogy research on FamilySearch that has already been conducted on your Virginia ancestors. You select the county and then an extensive list of books and articles appears. Some of these are scanned books available on FamilySearch.org while others could be available most anyplace on the Internet, such as on American Ancestors, Google Books, and Internet Archive. The books may focus on all the residents of a particular county or, in some cases, on only one family.

You can't trust every word of published family histories, but they generally help you save a lot of time and hard work. They may contain photographs, old letters, and family documents that you normally do not encounter in typical family history searches. Well-sourced family histories can help you quickly trace your family back several generations.



You can learn more in an article by Nathan W. Murphy in the FamilySearch blog at <https://familysearch.org/blog/en/studied-virginia-genealogy/>. *(The above two articles are from Eastman's Online Genealogy Newsletter and are copyright by Richard W. Eastman. They is re-published here with the permission of the author. Information about the newsletter is available at <http://www.eogn.com>.)*

LOCATION ADDRESSES

Bellevue Regional Library NE 12th St. and 110th Ave. NE Bellevue, WA 425-450-1760	Crossroads Mall Shopping Center Community Meeting Room NE 8th and 156th Ave NE, Bellevue, WA	FHC - Bellevue 10675 NE 20th St Bellevue, WA 425-454-2690	FHC - Kirkland 7910 NE 132nd St. Kirkland, WA 425-821-8781
Issaquah Public Library 140 East Sunset Way Issaquah, WA 425-392-5430	Lake Hills Library 15590 Lake Hills Blvd. SE Bellevue, WA 425-747-3350	National Archives and Records Admin. 6125 Sand Point Way NE Seattle, WA 98115-7999 206-336-5115	Fiske Genealogical Library 1644 43rd Ave E/ Seattle, WA 98122 206-328-2716
FHC - Redmond 10115 172nd Ave. NE Redmond, WA 425-861-9273	Newport Way Library 14520 SE Newport Way Bellevue WA 425-747-2390	North Bend Library 115 East Fourth St North Bend, WA 425-888-0554	Redmond Regional Library 15990 NE 85th St Redmond, WA 425-885-1861
WA State Puget Sound Regional Archives BCC, 3000 Landerholm SE, MS-100 Bellevue, WA 98007	Seattle Public Library 1000 Fourth Ave Seattle, WA 206-386-4636	Snoqualmie Public Library 38580 SE River Street Snoqualmie, WA 425-888-1223	Fire Station #22 6602 108th Ave NE Kirkland, WA

EGS MARCH AND APRIL 2013 MEETING CALENDAR

EGS Board Meeting (First Thursday, 10:00 AM)	The Eastside Genealogical Society Board will meet on Thursday, March 7, 10:00 AM to Noon and again Thursday, April 4 at the home of Carol Pattison. Note Change Of Location. Contact Carol at 425-228-2510 or maycreek@aol.com for address & directions.
EGS General Meeting	The Eastside Genealogical Society will meet on Thursday, March 14 and again Thursday, April 11, at 7:00 PM in the First Presbyterian Church of Bellevue, 1717 Bellevue Way NE, Bellevue, WA 98004. Visitors are welcome. NOTE Change of Location.
Computer Interest (Fourth Saturday, 9:30 AM)	The EGS Computer SIG will meet on the Saturdays, March 23 and April 27. We meet at 9:30 AM in the Community Room at Crossroads Shopping Center in Bellevue. The meetings last 2 hours and we usually have a speaker or leader discussing a specific topic. There is time for questions and discussion. After the meeting, most people have lunch. There is a choice of food from a large number of vendors. If you wish to receive e-mail notification of the SIG meetings, please send a request to egscomputersig@yahoo.com
Czech/Slovak Interest Group	We will next meet on March 2nd, 2013. Emily Kranz will tell about her experience being an exchange student in Kladno, CR and hosting the Kladno student here in the U.S. We are hoping that Antonie and Marketa, exchange students from Prague, will join us from Olympia. Mark your calendar, June 22 Mary Kozy will give a talk on <i>Intergrating DNA Information and Genealogy.</i> Then there is a meeting April 27 also. Meeting time is 9:30 AM to Noon, at Fire Station #22 in Kirkland. See website for more information: www.rootsweb.ancestry.com/~wacsig/ (Rosie Bodien, 425-828-0170 or rosie@bodien.org .)
EGS Lunch Bunch (Fourth Thursday, 11:30 AM)	Meets every fourth Thursday, 11:30 AM, at Crossroads Mall Shopping Center Food Court.
German Interest Group (First Friday, 1:00 PM)	The EGS German Interest Group will meet on Friday, March 1 and Friday, April 5 from 1:00 to 3:00 PM at the LDS Church, 10675 NE 20th Street, Bellevue. Visitors are always welcome! For more information watch for the meeting notice emails or contact Ann at 206 232-1104 or annp42@comcast.net
Irish and Scots-Irish Interest Group (First Wednesday, 12:30 PM)	Please contact Ann Lamb for meeting information. We meet at the LDS Church (host of Bellevue Family History Center) at 10675 NE 20th St, Bellevue, from 12:30 to 2:30 PM. (Ann Lamb, 425-557-0440 or AnnL7777@aol.com)
Italian Interest Group (Third Saturday, 1:30 PM)	The Italian Interest Group will meet on Saturday March 16, with Tony Melone speaking on his research in Abruzzo and the 80 page book he compiled on his family. March is the IIG's 23rd Anniversary!!! Would you like to go out to dinner after our meeting? Contact Mary to RSVP! Saturday, April 20-- meeting topic to be determined. We meet at the LDS Church, 10675 NE 20th St, Bellevue, from 1:30 to 3:30 PM. Please contact Mary for meeting information. (Mary Sangalang, 425-649-2250 or collectingroots@msn.com)
Legacy Interest Group (First Wednesday, 10:00 AM)	The Legacy Interest Group will meet on Wednesday, March 6, 2013. Ed Schultz will be teaching the Legacy SIG about the add-on programs Genelines and Legacy Charting Companion, both from Progeny Software. Wednesday, April 3, 2013 is TBD. We meet at the LDS Church (host of Bellevue Family History Center) at 10675 NE 20th St, Bellevue, from 10:00 AM to 12:00 PM. For information call Sherry Holthe 425-880-4407. (Sherry Holthe, sherdh@centurytel.net or 425-880-4407)
Scandinavian Interest Group (Second Tuesday, 10:00 AM)	We will meet on March 12 with the topic Danish Brick Walls - In-house collaborative help, Betty Spaulding moderator, and again on April 9: Marilyn Watt - Writing family stories that people will want to read. We meet from 10:00 AM to Noon at the Archive Building on the Bellevue College Campus. Please check our new website at http://scandinaviansig.wordpress.com Contact Sandy for meeting information.(Sandy Arildson, 425-747-5621, or sarildson@yahoo.com)
The Unofficial TMG Discussion Group (Third Wednesday)	The Unofficial TMG Discussion Group will meet on Wednesday, March 20, 11:30 AM to 1:30 PM, in the Community Room at Crossroads Mall in Bellevue. Bring for discussion any questions and/or tips regarding the use of The Master Genealogist software program or genealogy research in general. Even if you don't use TMG, but are interested in learning more about it, feel free to attend the meeting. You may bring your lunch or purchase food in the food court. The April meeting will be held on April 17, same time and place. If you would like your name added to the monthly reminder list, email Diane Hicks at dl.hicks@comcast.net .

EASTSIDE GENEALOGICAL SOCIETY CONTACTS

President*	Carol Pattison	425-228-2510	maycreek@aol.com
Vice President*	Bob Barnes	425-747-4863	rstithbarnes@hotmail.com
Secretary*	Vicky Quackenbush		vrq@comcast.net
Treasurer*	Kay Wilson	425-746-4366	kayjwilson@comcast.net
Trustee*	Sharron Filer	425-885-7213	n.sfiler@frontier.com
Past President*	Judy Meredith	425-702-9321	ja.meredith65@comcast.net
Education Chair*	Bob Barnes	425-747-4863	rstithbarnes@hotmail.com
Archivist/Historian*			
Library Chair*	Winifred Sihon	425-793-5424	wsihon@comcast.net
Library Volunteers	Winifred Sihon	425-793-5424	wsihon@comcast.net
Book Acquisitions*	Sarah Fleming	425-957-1134	sarahrosefleming@earthlink.net
Membership Chair*	Dorothy Mehrer	425-822-7316	dmehrer@netscape.com
Newsletter Editor*	Kim Nichols	360-668-3937	kimberly@dormik.com
Newsletter Contributors	Mickey Main	425-747-2038	mickeymain@comcast.net
	Sharron Filer	425-885-7213	n.sfiler@frontier.com
Newsletter Mailing	Kimberly Nichols	360-668-3937	kimberly@dormik.com
Nominating Chair*	Bob Barnes	425-747-4863	rstithbarnes@hotmail.com
	Norb Ziegler	425-557-2108	zieglerwa@sprintmail.com
	Marty Gale	206-232-6471	martygale@futuretense.net
Program Chair*	Sarah Fleming	425-957-1134	sarahrosefleming@earthlink.net
Publicity*	Dorothy Pretare	425-277-0831	dpgen@comcast.net
Representatives:			
DAR Annie Pulliam	Donna Hart	425-831-5978	carldonna1@comcast.net
(North Bend Chapter)			
DAR Cascade	Lanabeth Horgen	425-974-9117	lanabeth@lanabethhorgen.com
(Bellevue Chapter)			
Bellevue Reg Library			
FGS	Judy Meredith	425-702-9321	ja.meredith65@comcast.net
SIG Representative*			
Sunshine Chair*	Patti Wehrs	787-599-2746	pwehrs@msn.com
Webmaster*	Kim Nichols	360-668-3937	kimberly@dormik.com

* EGS Board Member

Special Interest Group (SIG) Contacts

Computer	Joe Flint		egscomputersig@gmail.com
Czech/Slovak	Rosie Bodien	425-828-0170	rosie@bodien.org
German	Ann Passe	206-232-1104	annp42@comcast.net
Irish & Scots-Irish	Ann Lamb	425-557-0440	AnnL7777@aol.com
Italian	Mary D. Sangalang	425-649-2250	collectingroots@msn.com
Legacy	Sherry Holthe	425-880-4407	sherdh@centurytel.net
Lunch Bunch			
Portuguese(inactive)	Barbara Guyll	425-746-5603	barbaraguyll@comcast.net
Scandinavian	Sandy Arildson	425-747-5621	sarildson@yahoo.com
Shore to Shore	Shirley Dowd	425-454-0078	srcd78@hotmail.com
Unofficial TMG	Diane Hicks	480-348-2068	dl.hicks@comcast.net



Eastside Genealogical Society
P.O. Box 374
Bellevue, WA 98009-0374

DATED MATERIAL
PLEASE DO NOT HOLD

THE EASTSIDE GENEALOGICAL SOCIETY

PURPOSE:

The EGS provides members a forum for learning and the exchange of information related to genealogy. The Society obtains and provides resources for use by members, encourages genealogical research and education, and provides community outreach through programs, classes, seminars and library volunteers.

MEETINGS:

EGS monthly meetings are held on the second Thursday of each month (except July, August, and December) at 7:00 P.M. at the Redmond Library, 15990 NE 85th St, Redmond, WA. A get acquainted and ask questions session is open at 6:30 P.M.

MEMBERSHIP:

Membership dues are: Individual—\$17, Couple—\$22, Senior—\$15, Senior Couple, \$19, Lifetime—15 times annual membership. Membership includes online newsletter. To receive printed newsletter, add \$6 to dues amount. To join the society, send your check with your name, phone number, address (nine digit zip please) and e-mail address (if applicable) to the address at the bottom of this page. Please mark "Membership" on your envelope.

NEWSLETTER SCHEDULE:

The *Bulletin Board* is published January, March, May, September, and November. Submission of news and articles to the *Bulletin Board* must be in writing and received **by the 15th of the month** for inclusion in the following month's newsletter. If you are unable to meet the deadline, please call Kim Nichols at 360-668-3937 to make special arrangements. Please mail submissions to: Kim Nichols, 12422 219th Place SE, Snohomish, WA 98296 or e-mail to: kimberly@dormik.com.

Note: The EGS Board and the *Bulletin Board* reserve the right to limit and prioritize event announcements, space permitting, to non-profit organization items of genealogical interest. Neither the EGS nor the editors of the *Bulletin Board* accept responsibility for errors of fact or judgment in the material submitted to and printed in the *Bulletin Board*. If errors are brought to our attention, we will try to correct them.

The *Bulletin Board* is a publication of:

The Eastside Genealogical Society
P.O. Box 374
Bellevue, WA 98009-0374