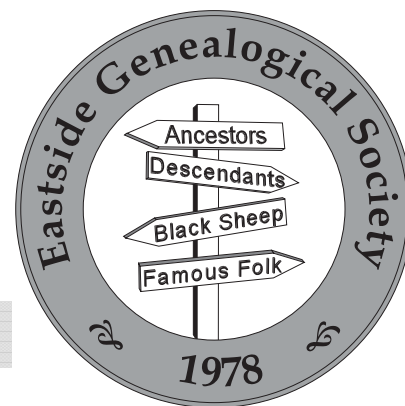


EASTSIDE GENEALOGICAL SOCIETY

BULLETIN BOARD



EGS ANNUAL MEETING INFORMATION

Date: Thursday, May 8, 2008
Time: Welcome New Members 6:30 PM
 Meeting Begins 7:00 PM
Location: Bellevue Regional Library
Topic: Panel Discussion by Special Interest Group Representatives

About The Program:

Our May program will feature a panel discussion by Special Interest Group (SIG) Representatives. Come find out what joining a SIG can do for you and your research!

PRESIDENT'S MESSAGE

Dear Fellow EGS Members,

As I prepare to pass the baton to a new president in May, and reflect on my past two years in this office, two things stand out on a personal level. I also have a number of reflections regarding the organization.

First of all, on a personal level, I have had the opportunity to meet and work with some wonderful people. Not only my fellow officers and chairpersons, but other volunteers and members at large. Hard working, dedicated, and generous individuals. Smart people. Creative folks. Some with fascinating stories. Others with valuable skills and experience to offer. Even some funny people, although this seems to be a fairly serious group (but then again we've never partied together!). If I had a <http://www.myspace.com> account, I would invite you all to register as friends.

Secondly, I've learned much more about genealogy than I would have otherwise. True, I had the responsibility to attend board meetings, general membership meetings, and outside events, but the payback to me was significant. And I probably learned as much from the many informal conversations I've had with individuals about genealogy as I did from the formal programs. Now I have to find the time to put all of this knowledge to work!

As far as the organization is concerned, we have many strengths, including our always interesting monthly programs, highly informative newsletter, very effective and active Special Interest Groups, significant library book donation program, and our free research help offering at the Bellevue Library, all supported by a very dedicated group of member volunteers.

On the other side of the ledger, our membership is declining and key volunteer positions have been difficult to fill and some (*continued next page*)

MAY 2008

VOLUME XXVI, NUMBER 11

The Eastside Genealogical Society

P.O. Box 374
 Bellevue WA 98009-0374
www.rootsweb.com/~wakcegs/

NEXT MONTH'S EGS MEETING:

Thursday, June 12th, 2008
 7 PM

Gary Zimmerman will speak on PERSI and the Allen County Library.

INSIDE THIS ISSUE:

Volunteer Spotlight	2
EGS Board Meeting Minutes	3
Summary of April EGS Meeting	4
New Genealogy Books at BRL	5
Making Connections Through EGS	6
Excavations at Stonehenge	6
SIG Information	8
2008 Upcoming Events & Seminars	9
Genealogical Standards relating to Technology	10

remain open. From what I read and hear, many genealogical organizations have the same issues. These areas will continue to be a challenge for the board. On balance, however, it is my opinion that the overall health of the organization is very good.

During this past year I floated two ideas for change. The first idea was a challenge to adapt our organization to a world of free and fee-based Internet genealogy resources. The second was to develop a membership driven genealogy 101 education resource. See my January and March President's Letter for more details.

For those of you who provided me with some feedback regarding these ideas, I thank you. In my opinion, however, I did not receive enough feedback to indicate that there is sufficient support to successfully move forward on these ideas. And that's no problem really. It's an indication that the organization is comfortable where it is and that current member needs are being met. And obviously that's a good thing.

I intend to stay actively involved in this wonderful organization. It has been my pleasure to work with all of you. Thank you for the opportunity.

Norb Ziegler
zieglerwa@sprintmail.com

VOLUNTEER SPOTLIGHT—PAT CLARKE

This month's Volunteer Spotlight is shining on Pat Clarke, Newsletter Editor for six and one-half years and a member since 1998. As Newsletter Editor, Pat produced over seventy newsletters. Each newsletter required 15 to 20 hours of her time each month, plus the coordination of up to a dozen EGS volunteers – writers, members who recommended articles from other publications, SIG representatives with meeting notices and other information, typists or data entry people, a proofreader, and one to two people to sort and mail the printed copy.

In addition, Pat had to coordinate her work with an outside printer, and was constantly looking for ways to reduce our printing costs. She actually changed printers four times in six years, not an easy thing to manage since each printer had a different process.

Her most significant accomplishment was converting the newsletter for electronic distribution over the Internet. This project involved considerable research on her part. Pat talked to other organizations to find out how they did it and benefited from their learning. She also consulted with some of our own members regarding technical issues. The conversion was not without a few minor startup problems, but today everything is running smoothly and the project has been a resounding success. Approximately 70% of the membership now receives the newsletter electronically, resulting in considerable savings to the organization through the reduction of printing and mailing costs.

Now that Pat hasn't done the newsletter for a number of months, she says she actually misses it! "It was a fun, fun job." It was challenging. Some creativity was required, and using the computer to get it done was something she definitely enjoyed. As she says, "The newsletter keeps the membership together." A very important function indeed.

Regarding her own genealogy research, Pat has been at it since the early 90s. It all started when someone gave her a copy of Family Origins software. Since she has always enjoyed working with computers, she was off and running. The primary surnames she is researching are Bryan, Gaines, Reid, Brandon, Glover, Estes, and Gunn.

Some of you may recall that Pat brought a Civil War Scrapbook to one of our Show and Tell meetings a few years ago. It covers the entire war and was compiled by her great grandfather, Lundy Reid Gunn, a member of the Confederate Army, who served all four years of the war despite being wounded five times. Pat will be donating the scrapbook to the Mississippi State Archives. Her grandfather also wrote a letter to all his descendents before he died, in 1924, documenting all that he could recall about his own genealogy. That letter became the basis of the genealogy research that Pat has since carried forward.

Thank you, Pat, for all that you have contributed to the Eastside Genealogical Society over the years.

EGS BOARD MEETING MINUTES

EGS Board Meeting – March 6, 2008
Summary of Minutes

Present: Norb Zeigler, Judy Meredith, Sharron Filer, Dave Abernathy, Bob Osrowske.

Actions:

By-laws – the revised section regarding elections was approved and will be read at the general meeting and published in the Bulletin prior to a vote at the May Annual Meeting.

Elections – Bob Barnes has agreed to be nominated for President, Walta McCarley for Secretary. Judy Meredith will be recommended for Vice-President.

Mail distribution – Judy Meredith to determine what items can go into the library. Norb Zeigler sends other societies' newsletters to Kim Nichols for possible inclusion of articles in our Bulletin – especially upcoming events.

Society property was last inventoried in 2004. A committee is to meet, determine current location of the property and update the list.

2008 Outreach – Bob Barnes signed EGS for the Strawberry Festival, requesting power, 2 tables and proximity to the Eastside Heritage booth. Genealogy 101 will be left to 2009. A genealogy class was requested from the Issaquah History Museum – Norb Zeigler will follow up with Ann Lamb.

Discussion:

Education Chair – Dave Abernathy is willing to take the position provided someone is found to replace him as SIG Representative.

Reports:

All Board Members are asked to email a report to the Board if they are unable to attend the Board meeting.

SIGS – The Legacy group is thriving.

Newsletter – send articles to Kim Nichols, editor.

Volunteer Spotlight – Norb Zeigler to interview two persons for future articles, and develop a list of questions as a guide for future interviews.

A complete copy of the minutes can be made available upon request.

Attention Members

**When mailing in
your dues, please
mark envelope
"Attn: Membership"
to aid our mail
distribution.**

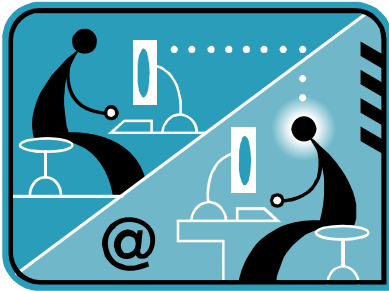
WELCOME NEW MEMBERS

Welcome to the following new members:

- John and Molly HOWELL are researching HOWELL, BOYNTON, LUDWIG, SUTTON, HIBBARD, BROWN, MONTAGUE, JERMYN, HARMAN, and LANNING in Ontario, Canada, Pennsylvania, Ohio, Michigan, and are interested in the Computer Interest Group.

SUMMARY OF THE APRIL EGS MEETING

One of EGS's internet gurus, Dave Abernathy, gave us a very invigorating and informative presentation on the topic of the World Connect Project. The World Connect Project can be readily accessed on Rootsweb (<http://worldconnect.rootsweb.com>). The Project is set of tools which enable users to upload (or download), modify, link, display and share their family trees with other researchers, and in turn, utilize the data from other family trees submitted by other researchers to assist in one's own research. As Dave emphasized, World Connect's database should be approached with the same caveats as any other user generated genealogical database—it should serve as a good source of ideas, but it is not authoritative, it is still up to the individual user to determine the validity of the information.



With this caveat in mind, Dave showed how the user can access and search the information contained in the World Connect database. The database is designed to be compatible with the GEDCOM (GEnealogical Data COMmunication) format for ease in transferring data. The user can choose to include or exclude individual data fields from the search in order to sort through the data more efficiently. The search engine has a number of useful tools including the “fuzzy search” which is a great name for either or both a soundex or metaphone based search. Another very useful tool is the “updated within” tool that enables the researcher to revisit the database and review only those data that have updated within a given timeframe, e.g. since your last visit.

Each family tree submitted is assigned a unique identification number so that the individual record data contained in the tree is traceable to the party who submitted it. This feature is coupled with a post-em note option that can be used to supply additional information or suggest a correction. Only the original submitter can actually alter the existing family tree. Dave encouraged that users contact the submitter to share additional information, to obtain more information about the source of their data or if you would like to see the entire file at once.

Dave discussed how to make a GEDCOM file for use at WorldConnect and some of the decisions that the submitter will have to make. There are both standard user setup/edit forms as well as Advanced User Setup/Edit forms to choose between. There are also some limitations in the GEDCOM format—not all data will be included and there is an issue with embedded/link files. However by thoroughly reviewing your options and making the appropriate choices one will be able to ensure that much of their genealogical information will be preserved and accessible to future researchers.

Dave strongly encouraged each of us to submit our family trees to the WorldConnect. Without interactive participation and user contributions such a database will become static and not become the growing, dynamic and valuable repository of genealogical information that it has the potential to be.

A final few caveats about downloading GEDCOM's or any other genealogical data from any number of sources, especially that submitted by individual users: do not trust it implicitly, do not just import, recognize that there may be more data available from the same source, and finally do contact the owner or originator if you have any questions.

Thank you, Dave, for a great presentation. Good luck and happy data mining. *(Submitted by Bob Barnes, Vice-President, EGS)*

DAVE AULT IN MEMORIAL

The regional genealogical community suffered a significant loss with the sudden passage of Dave Ault on March 24, 2008, in Seattle. Dave was a Washington native and 1958 graduate of Roosevelt High School in Seattle. He held both an undergraduate degree in Mathematics as well as a doctorate in Artificial Intelligence. A member of both the Seattle and Eastside Genealogical Societies, Dave was the Computer SIG leader for the SGS for many years and was a frequent participant in the EGS Computer SIG as well. He also gave a number of programs for EGS general meetings over the years. He'll be remembered for his generosity—both of his time and expertise—and his great sense of humor. He will be missed.

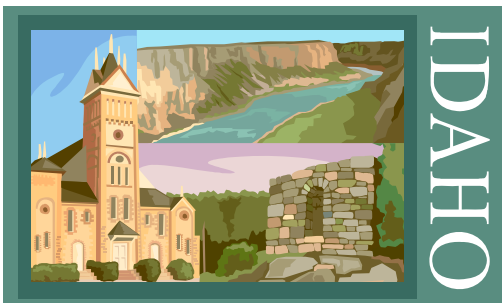
NEW GENEALOGY BOOKS AT THE BELLEVUE REGIONAL LIBRARY DONATED BY EASTSIDE GENEALOGICAL SOCIETY

The following books were purchased by the Eastside Genealogical Society as a result of members' suggestions or donated by members, and have been added to the genealogy collection at the Bellevue Regional Library since the last listing in the April Bulletin Board. Look for these books in the Genealogy Collection on the second floor.

- *In Their Words: A Genealogist's Translation Guide to Polish, German, Latin, and Russian Documents, Vol. 1 Polish*, by Jonathan D. Shea and William F. Hoffman. Language & Lineage Press, 2007, 376pp. R929.1089 SHE V1.
- *The Ark and Dove Adventurers*, by The Society of The Ark and The Dove, edited by George Ely Russell & Donna Valley Russell, GPC, 2005, 284pp. This book provides documented accounts of the first settlers of Maryland in 1634 having sailed from England on ships *The Ark* and *The Dove*, and compiled genealogies of their descendants. R929.3752 SOC
- *Scottish Highlanders on the Eve of the Great Migration 1725-1775, The Northern Highlands*, by David Dobson. GPC, 2007, 163pp. R929.308991 DOB
- *The Genealogist's Guide to Researching Tax Records*, by Carol Cook Darrow, CG and Susan Winchester, Ph.D., CPA. Heritage Books, 2005, 182pp. R929.1072 DAR
- *Finding Your Canadian Ancestors, A Beginner's Guide*, by Sherry Irvine and Dave Obee. Ancestry Publishing, 2007, 268pp. R929.1072 DAR

If you have a suggestion for a genealogy-related reference book to add to our collection at the Bellevue Regional Library, or if you have one to donate, please let the Book Acquisition Committee know by contacting Sarah Fleming at 425-957-1134 or Carl Cason via e-mail at ccason621@msn.com. Suggestion forms are available at the General Membership meetings.

PENNY POSTCARDS



What did your town look like according to Penny Postcards?

Check out your old stomping grounds during the times of the penny postcard by visiting this great website:

<http://www.rootsweb.ancestry.com/~usgenweb/special/ppcs/ppcs.html>

Click on the state and then on the county to see old penny postcards from that area.....pretty neat. (Submitted by Mickey Main, EGS member).

VOLUNTEER OPPORTUNITIES—WE NEED YOUR HELP!

Could you donate a few hours a week [or a month] to the Eastside Genealogy Society to help keep our operation running smoothly? EGS is only as strong as our volunteers and using the same people over and over, for every job, they are sure to get burned out. None of these jobs are full-time, serious commitment— type jobs.

- **Nominating Committee** - A new Nominating Committee Chairman and some members are needed to work on the Nominating Committee each spring to locate new officers for EGS.
- **Research Assistants**— We need an additional volunteer to help researchers at our afternoon or evening help sessions at the library. And Winnie could use an assistant Library Chair.



If you can help, please contact Norb Ziegler, 425-557-2108 or zieglerwa@sprintmail.com.

MAKING CONNECTIONS THROUGH EGS

The March issue of the EGS Bulletin Board contained a report by Bill Dillon on his research. While enjoying his article I read a name which brought recognition. Could there be more than one Furney Jones of Tazewell, Tennessee? I didn't think so. This was a name I had heard my father use in his tales of family history. I contacted Bill and we met at the Regional Library. He kindly had made copies of all the information he had on Jones during the Civil War, as the Union Army later made retribution for supplies they had taken from Jones and there were lots of written documents. My paternal grandfather was Furney's son-in-law in a first marriage and lived adjacent to Furney in Tennessee. My line is through a second marriage so I am not related to Furney (or Bill Dillon).

Research is fun, but it's more so when you discover a wonderful source of information in a local EGS member! Bill was very generous in sharing all this written information, supplying information on a link in my family that was very sparse on facts. I now have copies of my grandfather's signature on depositions and many clues to his life. (Yes, the ancestry is correct--all of the men fathered children during second marriages and my father was 50 when I was born.)

Thanks, Bill, and to the Bulletin Board for printing his research. (*Submitted by Joyce Felker, EGS member since 2007, 425-747-5209*).

EXCAVATIONS START AT STONEHENGE

Did you ever think that perhaps some of your ancestors helped build Stonehenge? Maybe they dragged the rocks for many miles or helped set those rocks vertically on the Salisbury plains. I suspect that most everyone with English ancestry is descended from some of the people who built Stonehenge, although there is no way (yet) to prove that. Perhaps a future DNA study on any exhumed bodies might prove a connection but that's not possible with today's technology. A new archaeological dig may turn up some other interesting evidence, however.

The odds of descent from a Stonehenge builder are overwhelming. Everyone has two parents, four grandparents, eight great-grandparents and so forth in a quickly expanding mathematical progression. If you go back 400 years, you have roughly 131,000 ancestors. If you go back to the time that Stonehenge is believed to have been created, about 4,500 years ago, you would theoretically have billions or trillions of ancestors.

NOTE: Those numbers assume that you have no duplicate ancestors. Of course, everyone has many duplicates in their family trees. In fact, most population experts believe there have only been about 100 billion people ever born. While we obviously are not descended from all of them, chances are that each of us has millions and perhaps billions of ancestors.

Anyone whose ancestors were in England several thousand years ago probably is descended from Stonehenge builders. That conjecture is based solely on the numbers involved. In my case, I can document my descent from a number of people who lived 400 years ago in Wiltshire, not far from Stonehenge. I suspect the odds are good that I have Stonehenge ancestors, even though I probably will never be able to prove that connection. The same is probably true for millions of today's people in England, the United States, Canada, Australia, New Zealand, South Africa and elsewhere.

The BBC is funding a two-week archaeological dig at Stonehenge with video cameras recording nearly every moment of the effort. It is the first such excavation in more than forty years. Of special interest is the bluestones that stand inside the larger sarsen pillars. The exact origins of these bluestones has already been proven: from the Preseli Hills of North Pembrokeshire, 250 km to the west. What is not known is why these stones were so important and how these primitive people transported the heavy stones.

The BBC has an interesting story about the new archaeological dig, including two videos, at: <http://news.bbc.co.uk/2/hi/science/nature/7322134.stm>

(*This article is from Eastman's Online Genealogy Newsletter and is copyright 2008 by Richard W. Eastman. It is re-published here with the permission of the author. Information about the newsletter is available at <http://www.eogn.com>. Published April 2, 2008*)



FREE GENEALOGICAL RESEARCH HELP:

Genealogical research help is available at the Bellevue Regional Library, located at NE 12th St. and 110th Ave. NE in Bellevue. Eastside Genealogical Society volunteers are waiting to help you with problems and questions. They are available in room 6 on the second floor of the library, to the left of the reference desk. Hours are Tuesdays from 7-9 PM and Wednesdays from 1-3 PM.

HAS YOUR EMAIL OR ADDRESS CHANGED?

Are you an EGS member and your email has changed? Do you receive the newsletter by email? If so, please make sure to send your updated email address to kimberly@dormik.com. This will help make sure you continue to receive the newsletter without any interruptions.

Also, if you receive the newsletter by snail mail and have an address change, please send your new mailing address to dmehrer@netscape.com or by mail at : The Eastside Genealogical Society, P.O. Box 374, Bellevue, WA 98009-0374. Be sure to mark your envelope "membership."

ONLINE TRANSLATION WEBSITES

Do you know of a good online translation website that might help you with your genealogical research? Here are two suggested by EGS member Dorothy Pretare:

- http://www.online-translator.com/text.asp#tr_form
- For English to Polish, or Polish to English, use <http://www.poltran.com/>

If you know of other translation website that work well, please email them to kimberly@dormik.com and we will share them in future newsletters.

EGS AND THE STRAWBERRY FESTIVAL

EGS has again agreed to participate in Bellevue's Strawberry Festival this year. The Festival will be held June 28th (10 AM-8 PM, and June 29th (10 AM - 5 PM). We will have a genealogical display booth. Judy Meredith and Bob Barnes are co-chairing the EGS participation and are asking for volunteers willing to help staff the booth. Please contact Judy (ja.meredith@verizon.net) or Bob (rstithbarnes@hotmail.com) to sign up or for further information.

GENEALOGY AT SEA SEMINAR CRUISE

Fly Away Travel is now taking reservations for the 2008 Genealogy Seminar at Sea, October 25 to November 1st. The Seminar at Sea will be hosted on board Royal Caribbean's brand new, unparalleled, Liberty of the Seas, which will be sailing to the warm Eastern Caribbean islands of Puerto Rico, St Maarten & Royal Caribbean's private paradise of Labadee. This Seminar at Sea stands to be the best of the best in terms of its stunning array of some of the most sought after speakers in the genealogy community today: John Phillip Colletta, Laura G. Prescott, George G. Morgan, Donna M. Moughty, Stephen J. Danko, Paul Milner, and Paula Stuart-Warren.

Passengers will have the opportunity to learn the latest and greatest techniques in areas such as: methodology, writing & publishing, internet research, problem solving and geographic areas around the world. Guests will have the opportunity to choose up to 15 lectures that will take place in Liberty of the Seas four state of the art conference centers over a period of three days during the seven day cruise. The authored speakers will be featured for book sales and autographs during a special group activity.

Check out this cruise at www.GenealogyCruises.com or contact Cindy Lorenz at Fly Away Travel 800-837-0295 or by e-mail: FlyAwayInc@aol.com for additional information.

EGS MAY 2008 MEETING CALENDAR

EGS Board Meeting (First Thursday, 10:00 AM)	The Eastside Genealogical Society Board will meet on Thursday, May 1 at 10:00 AM at the Redmond Public Library.
EGS General Meeting (Second Thursday, 7:00 PM)	The Eastside Genealogical Society will hold its Annual Meeting on Thursday, May 8 at 7:00 PM in the Bellevue Regional Library. There will be a presentation by a panel of Special Interest Group representatives. Visitors are welcome to attend.
Computer Interest Group (Fourth Saturday, 9:30 AM)	Read all about it! in genealogical publications to be reviewed by Judy Meredith at the May meeting of the Computer Interest Group in the Community Room at Crossroads at 9:30 AM on Saturday, May 24. Judy will share information useful to computer users that is published in periodicals available on the newsstand or through subscription, and invites members to share reviews of their favorite publications in an open discussion. (Margery Perdue m.perdue@comcast.net)
Czech/Slovak Interest Group (Check Bulletin for meeting information)	The next meeting will be May 31, 9:30 to Noon, at Firestation #22. (Rosie Bodien, 425-828-0170 or rosie@bodien.org)
EGS Lunch Bunch (Fourth Thursday, 11:30 AM)	Meets every fourth Thursday, 11:30 AM, at Crossroads Mall Shopping Center Food Court.
German Interest Group (First Friday, 1:00 PM)	Our May meeting will be on Friday, May 2 from 1:00 to 3:00 PM at the Crossroads Mall Community Meeting Room. The topic will be "Using Meyers Gazetteer of the German Empire (Meyers Orts) to locate your Ancestral Home." Gazetteers are important in doing family research. They not only help you pinpoint a specific place and associate them with the jurisdictions to which they belong, but they can also provide interesting facts about the community and help you to know where to look for additional records. Visitors are always welcome. (Contact: Ann Passé 206 232-1104)
Irish Interest Group (First Wednesday, 10:00 AM)	Will meet Wednesday, May 7 at Crossroads Mall Community Room, 10:00 AM to 12:00 Noon. (Call Ann Lamb 425-557-0440 or AnnL7777@aol.com)
Italian Interest Group (Third Saturday, 1:30 PM)	The Italian Interest Group will meet Saturday, April 19, from 10:00 AM to 12:00 Noon at Lake Hills Library -- NOTE: time change. (Mary Sangalang, 425-649-2250 or collectingroots@msn.com)
Legacy Interest Group (First Wednesday, 12:30 PM)	Will meet Wednesday, May 7, 12:30-2:30 in Crossroads Mall Community Room. Topic: Backup/Restore, GEDCOM Export, Questions on Previous Classes. (Sherry Holthe, sherdh@centurytel.net or 425-880-4407)
Scandinavian Interest Group (Second Tuesday, 10:00 AM)	The Scandinavian Interest Group will meet Tuesday, May 12, 10:00 - Noon in the Puget Sound Archive building at Bellevue Community College. (Sandy Arildson, 425-747-5621, or sarildson@yahoo.com)
Shore to Shore Interest Group (Changes monthly, call Jan)	Call Jan Henderson 425-483-0334.

Old Redmond Historic Walking Tours Return

If you live in Redmond, you probably drive along Leary Way daily. But do you know the histories of our oldest buildings? Like, which one was both an undertaker's premises and a bordello? Tom Hitzroth will educate and entertain folks with walking tours that explore those histories. This year's dates are May 18, June 22, and September 21, 2008. Tours run from 1:00 to 2:30 PM, and walkers meet on the front steps of the Justice White House, 7730 Leary Way. A tour will not be held if it rains. An \$8 fee helps fund Society research. Pre-registration is required. To register, e-mail Tom at thitzroth@msn.com or phone the Redmond Historical Society office at 425-885-2919.

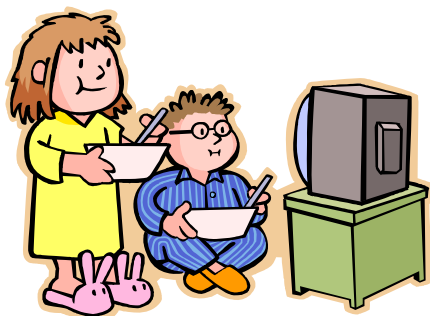
LOCATION ADDRESSES

Bellevue Regional Library NE 12th St. and 110th Ave. NE Bellevue, WA 425-450-1760	Crossroads Mall Shopping Center Community Meeting Room NE 8th and 156th Ave NE, Bellevue, WA	FHC - Bellevue 10675 NE 20th St Bellevue, WA 425-454-2690	FHC - Kirkland 7910 NE 132nd St. Kirkland, WA 425-821-8781
Issaquah Public Library 140 East Sunset Way Bellevue, WA 425-392-5430	Lake Hills Library 15528 Lake Hills Blvd. SE Bellevue, WA 425-747-3350	National Archives and Records Admin. 6125 Sand Point Way NE Seattle, WA 98115-7999 206-336-5115	FHC-Factoria 4200 124th Ave. SE Bellevue, WA 425-562-0361
FHC - Redmond 10115 172nd Ave. NE Redmond, WA 425-861-9273	Newport Way Library 14520 SE Newport Way Bellevue WA 425-747-2390	North Bend Library 115 East Fourth St North Bend, WA 425-888-0554	Redmond Regional Library 15990 NE 85th St Redmond, WA 425-885-1861
Wa State Puget Sound Regional Archives BCC, 3000 Landerholm SE, MS-100 Bellevue, WA 98007	Seattle Public Library 1000 Fourth Ave Seattle, WA 206-386-4636	Snoqualmie Public Library 38580 SE River Street Snoqualmie, WA 425-888-1223	Firehouse #22 6602 108th Ave NE Kirkland, WA

2008 CALENDAR OF UPCOMING SEMINARS & EVENTS

May 10, 2008	History is happening in the Redmond area! The Redmond Historical Society will meet on Saturday, May 10, 2008, 10:30 AM to Noon, at The Redmond Library, 15990 NE 85 Street, Redmond, WA. Drivers and fans of the Sammamish Slough river races will reminisce about outboard, water ski, and human-propelled races once held between Redmond and Kenmore. Don't miss this meeting. To receive the monthly newsletter, contact the Society office at 425-885-2919, or email your request to redmondhistory@hotmail.com . Books, note cards, free historic walking tour brochures, and the book, "Redmond Reflections," are available in our office, which is open Tuesday – Thursday, 1:00 to 6:00 PM and Monday and Friday, 4:00 to 6:00 PM. Visit our website: www.redmondhistory.org
May 14-17, 2008	National Genealogical Society Annual Conference, Kansas City, MO, www.ngsgenealogy.org
May 16-17, 2008	Washington State Genealogical Society Conference <i>Leaving Footprints— Past, Present & Future</i> , with Kory L. Meyerink, in Mount Vernon, WA. Many speakers and topics, information at www.rootsweb.com/~wasgs or www.rootsweb.com/~wasvgs
May 18, 2008	Old Redmond Walking Tour presented by Redmond Historical Society, Redmond, WA. Please see bottom of page 8 for more information.
September 3-6, 2008	The 2008 FGS Conference <i>Footprints of Family History Philadelphia, PA</i> . www.fgs.org
September 26-28, 2008	The Kelowna & District Genealogical Society announces their <i>Harvest Your Family Tree</i> Genealogical Seminar September 26-28, 2008, in Kelowna, BC. Features 24 concurrent sessions, keynote address, and walking tour. For more Information, see www.rootsweb.ancestry.com/~bckdgs/seminar.htm

ROOTS TELEVISION ON YOUR COMPUTER



You can now watch genealogy related information on your computer! This website, at www.rootstelevision.com, is a lively and organized site that provides instant videos, entire programs, and high quality lectures on genealogy, family history and the methodology that will help viewers be top-notch family researchers. The site includes programs, blogs, rootstube (similar to youtube.com), my rootstv, and shopping pages. The content is free to use and view. Sit back in front of your computer and catch the latest and best!

GENEALOGICAL STANDARDS & GUIDELINES

The following are Standards for Use of Technology in Genealogical Research and are recommended by the National Genealogical Society.

Mindful that computers are tools, genealogist take full responsibility for their work, and therefore they —

- Learn the capabilities and limits of their equipment and software, and use them only when they are the most appropriate tools for a purpose.
- Do not accept uncritically the ability of software to format, number, import, modify, check, chart or report their data, and therefore carefully evaluate any resulting product.
- Treat compiled information from on-line sources or digital databases in the same way as other published sources — useful primarily as a guide to locating original records, but not as evidence for a conclusion or assertion.
- Accept digital images or enhancement of an original record as a satisfactory substitute for the original only when there is reasonable assurance that the image accurately reproduces the unaltered original.
- Cite sources for data obtained on-line or from digital media with the same care that is appropriate for sources on paper and other traditional media, and enter data into a digital database only when its source can remain associated with it.
- Always cite the sources for information or data posted on-line or sent to others, naming the author of a digital file as its immediate source, while crediting original sources cited within the file.
- Preserve the integrity of their own databases by evaluating the reliability of downloaded data before incorporating it into their own files.
- Provide, whenever they alter data received in digital form, a description of the change that will accompany the altered data whenever it is shared with others.
- Actively oppose the proliferation of error, rumor and fraud by personally verifying or correcting information, or noting it as unverified, before passing it on to others.
- Treat people on-line as courteously and civilly as they would treat them face-to-face, not separated by networks and anonymity.
- Accept that technology has not changed the principles of genealogical research, only some of the procedures.

(Copyright 2000, 2001, 2002 by National Genealogical Society. Permission is granted to copy or publish this material provided it is reproduced in its entirety, including this notice.)

WEBSITES TO INVESTIGATE

http://gravelocator.cem.va.gov http://www.findagrave.com http://interment.net	Sites to help you locate the gravesite of a veteran in a National Cemetery.
http://genealogy.about.com/library/authors/ucllaassen1a.htm	<i>Researching Your Dutch Ancestors</i> , a twelve-part article providing a good overview of genealogy research in the Netherlands.
http://photodetective.com and http://photodetective.com/photo_magazines.htm	An updated website that provides links to articles by Maureen Taylor, an expert in gleaning clues from old photographs. Includes an “Ask the Photo Dectective” section which invites questions (they will be answered free).
http://www.ysearch.org	A site that can be used to investigate DNA testing to round out genealogical research. This site allows a user to compare the outcomes from different sites including a search by last name.
http://www.kansasmemory.org	Primary sources from the Kansas Historical Society, including photographs, diaries, letters and other historical items.
http://news.nnyln.net	Northern New York Historical Newspapers, consisting of more than 630,000 pages from 25 newspapers.

EASTSIDE GENEALOGICAL SOCIETY CONTACTS

President*	Norb Ziegler	425-557-2108	zieglerwa@sprintmail.com
Vice President*	Bob Barnes	425-747-4863	rstithbarnes@hotmail.com
Secretary*	Walta McCarley	425-746-7557	wmccarley@yahoo.com
Treasurer*	Bob Osrowske	425-822-6813	osrowske3@comcast.net
Trustee*	Sharron Filer	425-885-7213	n.sfiler@gte.net
Past President*	Bill Sperber	425-739-9219	bsperber@comcast.net
Education Chair*	Dave Abernathy	425-271-4885	DaveA@schmeckabernathy.com
Archivist/Historian*	Walta McCarley	425-746-7557	wmccarley@yahoo.com
Library Chair*	Winifred Sihon	425-746-3573	wsihon@comcast.net
Acquisitions	Carl Cason	425-402-1635	ccason621@msn.com
	Sarah Fleming	425-957-1134	sarahrosefleming@earthlink.net
Periodicals/Vertical Files	LaVola Schrum	425-747-2501	
Membership Chair*	Dorothy Mehrer	425-822-7316	dmehrer@netscape.com
Newsletter Editor*	Kim Nichols	360-668-3937	kimberly@dormik.com
Newsletter Contributors	Mickey Main	425-747-2038	mickeymain@comcast.net
	Sharron Filer	425-885-7213	n.sfiler@gte.net
Newsletter Mailing	Jack and Jean Newman	425-746-2324	jnewman495@earthlink.net
Nominating Chair*	(need volunteer)		
	Marty Gale	206-232-6471	martygale@futuretense.net
Program Chair*	Judy Meredith	425-702-9321	ja.meredith@verizon.net
Program Summary	(need volunteer)		
Publicity*	Dorothy Pretare	425-277-0831	dgpen@comcast.net
Representatives:			
DAR	Donna Hart	425-831-5978	carldonna1@comcast.net
AKCHO	Bob Sandbo	425-454-5606	bobpat9@jps.net
Bellevue Reg Library	Pat Sandbo	425-454-5606	bobpat9@jps.net
FGS	Peter Robertson	206-236-2473	pnrmercer@earthlink.net
SIG Representative*	Margery Perdue	425-643-3502	m.perdue@comcast.net
	Sherry Holthe	425-880-4407	sherdh@centurytel.net
Sunshine Chair*	Pat Clarke	425-643-4855	pbclarke@comcast.net
Supply Table/Bookstore Chair*	Kim Nichols	360-668-3937	kimberly@dormik.com
Surname File	Walta McCarley	425-746-7557	wmccarley@yahoo.com
Webmaster*	Kim Nichols	360-668-3937	kimberly@dormik.com

* EGS Board Member

Special Interest Group [SIG] Contacts

Computer	Margery Perdue	425-643-3502	m.perdue@comcast.net
Czech/Slovak	Rosie Bodien	425-828-0170	rosie@bodien.org
German	Ann Passe	206-232-1104	annp42@comcast.net
Irish	Ann Lamb	425-557-0440	AnnL7777@aol.com
Italian	Mary D. Sangalang	425-649-2250	collectingroots@msn.com
Legacy	Sherry Holthe	425-880-4407	sherdh@centurytel.net
Lunch Bunch			
Portuguese(inactive)	Barbara Guyll	425-746-5603	barbaraguyll@comcast.net
Scandinavian	Sandy Arildson	425-747-5621	sarildson@yahoo.com
Shore to Shore	Jan Henderson	425-483-0334	jan.henderson1@comcast.net



Eastside Genealogical Society
 P.O. Box 374
 Bellevue, WA 98009-0374

DATED MATERIAL
 PLEASE DO NOT HOLD

THE EASTSIDE GENEALOGICAL SOCIETY

PURPOSE:

The EGS provides members a forum for learning and the exchange of information related to genealogy. The Society obtains and provides resources for use by members, encourages genealogical research and education, and provides community outreach through programs, classes, seminars and library volunteers.

MEETINGS:

EGS monthly meetings are held on the second Thursday of each month (except December) at 7:00 P.M. at the Bellevue Regional Library, NE 12th Street and 110th Ave. NE, Bellevue WA. The Supply/Book Table, get acquainted, browse, ask questions session is open at 6:30 P.M.

MEMBERSHIP:

Effective 1 January 2001, membership dues are: Individual—\$17, Couple—\$22, Senior—\$15, Senior Couple, \$19, Lifetime—15 times annual membership. To join the society, send your check with your name, phone number, address (nine digit zip please) and e-mail address (if applicable) to the address at the bottom of this page. Please mark "Membership" on your envelope.

NEWSLETTER SCHEDULE:

The *Bulletin Board* is published each month, except December. Submission of news and articles to the *Bulletin Board* must be in writing and received **by the 15th of each month** for inclusion in the following month's newsletter. If you are unable to meet the deadline, please call Kim Nichols at 360-668-3937 to make special arrangements. Please mail submissions to: Kim Nichols, 12422 219th Place SE, Snohomish, WA 98296 or e-mail to: kimberly@dormik.com

Note: The EGS Board and the *Bulletin Board* reserve the right to limit and prioritize event announcements, space permitting, to non-profit organization items of genealogical interest. Neither the EGS nor the editors of the *Bulletin Board* accept responsibility for errors of fact or judgment in the material submitted to and printed in the *Bulletin Board*. If errors are brought to our attention, we will try to correct them.

The *Bulletin Board* is a publication of:

The Eastside Genealogical Society
 P.O. Box 374
 Bellevue, WA 98009-0374