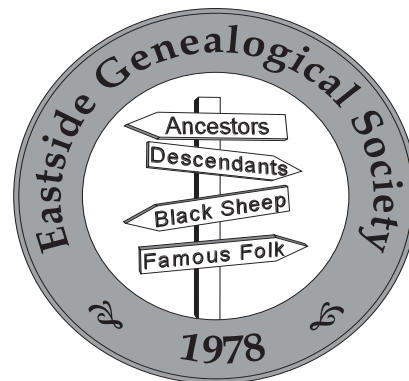


BULLETIN BOARD



The Eastside Genealogical Society
P.O. Box 374
Bellevue WA 98009-0374
www.rootsweb.com/~wakcegs/

Bellevue, Washington

Vol. XXV No. 11

May 2007

EGS GENERAL MEMBERSHIP MEETING

Date: Thursday, May 10, 2007
Time: 6:30 PM Welcome new members,
Supply table open
7:00 PM Meeting
Place: Bellevue Regional Library
Subject: "Your Most Fascinating Ancestor"
Speaker: EGS Members and guests

ABOUT THE PROGRAM

May's program will feature: "Your Most Fascinating Ancestor!" Genealogists love to talk about their families and here is your chance. Tell us in a few minutes, all about your favorite ancestor – the notorious, famous, eccentric, talented, heroic, whatever. We're all ears! (Where else could you possibly find a more receptive audience?) Everyone has some, so pick one and come to the meeting and share!

[Submitted by Judy Meredith, EGS Program Chair]

ELECTION OF OFFICERS

Election of officers will take place at the May General meeting. This is an uneven year and we will be voting for Vice President, Treasurer and Trustee. The candidates are Vice President, Bob Barnes, Treasurer, Pete Clarke and Trustee, Sharron Filer. The candidates are presently serving in these offices and have agreed to serve for another term. Additional nominations from the floor will be accepted.

[Submitted by Maxine Klink, Nominating Committee Chairman]

MESSAGE FROM THE BOARD WHAT ARE BYLAWS AND WHY SHOULD I CARE?

We've heard a lot recently about the US Senate being stalled because they can't get a 60 vote majority. It's because of a Rule of Order called cloture, which prevents a simple (51%) majority from overriding the minority and forcing a vote.

Did you know that EGS's rules are based on the US Senate rules? They are called Robert's Rules of Order, after General Henry M. Robert III, who wrote them all down in 1876. Now, can you imagine EGS running by the rules of the Senate? They are too complicated for us, and we use a much-simplified version, but our rules refer to Robert's Rules in case our own rules break down. Our rules are called the EGS Bylaws.

Why do we have bylaws with all those complications? They explain how to handle arguments. They protect you from anyone who might want to take over the Society. A group of members might want to gain control, or a run-away EGS Board might not be protecting your interests. Your protection from such people is our bylaws, which explain how we – the Board and the members – have to work.

You vote on some officers every year, and on the bylaws every time they are changed. In those votes you are voting your confidence in the rules and the board that keep EGS running. Just as in the United States Senate, you elect people you trust to have your interests in mind. (Err, is that a joke?)

Suppose some greedy people wanted to get their hands on our \$10,000 in savings. They

could try to get elected and then appoint committee chairpersons who support their views. The bylaws protect you by giving you control over the Society officers. You have the right to see the budget, financial reports and board minutes whenever you want. A responsible board will ask for your opinion even if the bylaws don't say they have to, especially on money questions.

That's why it's important to understand the bylaws and get to know your five elected officers: President, Vice-President, Secretary, Treasurer and Trustee. You vote directly on the candidates who form the Executive Board, which has final approval of all decisions and is directly responsible to you.

In May we are re-electing three of these five people. All of the candidates are experienced board members, but it is up to **you** whether they represent **your** interests in EGS. Call and interview them. Come to the meeting to vote. Our bylaws don't currently allow absentee votes by members — perhaps you think they should? You don't vote on the budget or changes to it — do you think you should?

The bylaws and all these procedures are meant to protect **you** from **us**, especially if there is conflict. They should be strong for the worst case — they aren't needed in the best case. Read your Bylaws, available on the EGS website at www.rootsweb.com/~wakcegs/EGSBylawsrev2006.pdf, or ask for them from the Secretary (me!). Ask questions of any of the elected officers (listed in the back of the Bulletin). It's your right to know what's going on in the Society, and our responsibility to know our duties to you.

[Submitted by EGS Secretary, Barbara Zanzig]

SUMMARY OF THE 12 APRIL MEETING

New Vice-President Bob Barnes conducted the meeting, introducing his two months of remaining tenure filling the previously vacated position. We hope he will be around much longer lending his talents to EGS. Four new members

introduced themselves and the family names they are researching. As always, we welcome the "new blood" and the interests they will share.

Several announcements began the business meeting.

1. The May meeting will include election of officers, and the program will be members invited to tell stories of some family history experience or how they discovered previously unknown facts.
2. Ideas are needed for EGS participation in the Bellevue Strawberry Festival.
3. Available written sources of research information include donated magazines from the German Interest Group.

4. Remaining EGS books being offered with Kim Nichols handling the sales table, and a good selection of genealogy books in the Bellevue Library.

Guest speaker Pat Richley, also known as "Dear Myrtle," was introduced and began an extensive presentation on "Finding Your Elusive Female Ancestor." She stressed the importance of writing bibliographic citations, and cited Legacy Family Tree, Family Tree Maker and Roots Magic as programs useful in keeping notes and organizing family information. When looking for parents of a female ancestor, recommended books with different

approaches, "Discovering Your Female Ancestor," and "The Hidden Half of the Family" (by state organization) are just two of many sources to consider. Distinguish between family tradition and documentation, both of which are integral to a good understanding of family.

Women's historic inferior legal status, and the frequent and inconsistent changing of that status, adds more challenges to a genealogist's research. For example: Connecticut was the first state to allow divorce, other states followed at different times. Woman only received the right to vote in America in 1920, and just a few years ago in Ireland. From Colonial times to the Civil War a widow was not allowed to make decisions for her own children. A male guardian had to be appointed.

Good Proverbs

Not one shred of
evidence supports the
notion that life is serious.

~~~

It is easier to get  
forgiveness than  
permission

~~~

My idea of housework is
to sweep the room with a
glance

~~~

A balanced diet is a  
cookie in each hand

Some ideas for pursuing the research: The Family History Centers have a wealth of information. Look for wills, which generally don't show a wife's maiden name, and for probate records, which stipulate much more and may include maiden name, brothers and other information that can lead to discovery of your mystery woman's parentage. Always look for laws in effect at the time you are researching. Numerous books are available (not everything is online yet). Find relevant books for your state of research. Excellent sources of information if you have Virginia heritage are the Virginia State Library and Historical Society. Inter-library loans are available if your local library doesn't have your book of interest. Contact the local genealogy society in the area of your research.

To better understand your ancestor's experience, become informed on the lives of those whose time and place she shared. How did they dress? What were societal norms? What unusual behavior might have been practiced by some? For example drug addiction seems a modern phenomenon, but in the 1800's use of morphine and opium was sometimes quite prevalent among widowed, married or unmarried women, especially in middle or upper class. Some doctors' wives and southern plantation women used these drugs in home remedies. This clue may help understand the times, but you likely won't find your mystery woman on some "users" list!

Look at naturalization laws, which changed from time to time and influenced records you may want to research. Between 1804 and 1906 a widow became a citizen if her husband had filed a Declaration of Interest, but died before naturalization - she needed only to take an oath of allegiance. From 1855 to 1922 a wife's citizenship was automatic if her husband was a citizen. After 1922 an "alien" woman who married an American or naturalized citizen had to apply for citizenship on her own. In 1873 an African-American widow had to produce records documenting the marriage.

Veterans' pensions sometimes extended to widows and may provide valuable documentation. From 1780, a Revolutionary War widow re-

ceived half the deceased officer's pay for seven years. Civil War pension files name the spouse and all family members, including the children's birth dates. Pensions could extend only to the children named by the soldier. (Some much younger wives remarried and had more children.) Look for second marriages. Confederate pensions are by state. Texas veteran benefits were different - soldiers from either side were entitled to land. Some veterans of the Indian War may have received federal pensions.

Important women's information may be found in diaries, letters, family bibles and notations in newspapers including society pages or family news. A project is now under way to scan and digitize newspapers broadly and it will be available "free". Church records, parish books, baptisms & marriages may be available by county and area. The practices varied in record keeping and access allowed. Some Protestant Church minutes tell when members transferred congregation or denomination, which happened

occasionally. Determine the locality and what churches were there at your target time. City Directories from the late 1700's to early 1800's list churches. The Family History Center is a good place to start looking.

Miscellaneous hints: In the late 1800's, Italian and some Irish women used their maiden names when travelling, even though married. Put your ancestor in the historical perspective of her time. Clearly label ancestors photos by name and date. The style of dress, hair and personal items add interest and can help set approximate date, if not known. Points of view differ by person and generation. See [www.Amazon.com](http://www.Amazon.com) (Find everyday life in various times.) Also see Godey's Lady's Book (On line) 1855-58. Some items of interest that can reflect the essence of your ancestor's life story include quilts, implements, tea pots, or pictures of same from the era. Put them together with photos, if you have them, or pictures of the garments or needlework items of the time. Check Roots Web mailing list for surnames. Try [www.Archives.org](http://www.Archives.org) which sometimes has information that has been deleted from web sites. Put together a story about your ancestor with name,



time, names of known relatives and dates, and send to (genealogy group?) in the area of research. Note that you are still looking for her parents' names. You might get lucky! Cemeteries often have more information than on the headstones. Check it out. Take a trip to your ancestral home - very important in gaining information and insights. Ask relatives to identify and give any missing information they may possess.

Pat's informative talk reinforces the fact that, as in all genealogy research, when looking for that elusive female ancestor, you are led to a study and better understanding of history, geography, societal laws, customs and traditions. Even if you never find all her lineage, you gain a perspective on her surroundings and the kind of life she probably lived, and even its impact on her descendants -including yourself. For every new bit of information you gain about that elusive ancestor there is an "Aha!" moment of great joy and satisfaction. That's genealogy - a welcome distraction from today's often disturbing news and travails. Thanks to Pat for sharing her helpful insights.

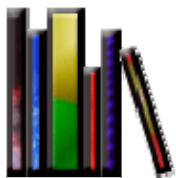
[Submitted by EGS Member, Bill Dillon]

### NEW MEMBERS

Please welcome new member Jim Carroll, son-in-law of EGS member Bill Dillon. He is researching his Irish heritage, and the names Carroll and O'Sullivan. He has already joined the Irish SIG.

[Submitted by EGS Membership Chair, Dorothy Mehrer]

### NEW GENEALOGY BOOKS AT THE BELLEVUE REGIONAL LIBRARY DONATED BY EASTSIDE GENEALOGICAL SOCIETY



The following books were purchased by the Eastside Genealogical Society as a result of members' suggestions. or donated by members, and have been added to the genealogy collection at the Bellevue Regional Library since the last listing in the April 2007 *Bulletin Board*. Look for these books in the Genealogy Collection on the second floor.

- *Index to Virginia Estates, 1800-1865, vol. 7*, compiled by Wesley E. Pippenger. Virginia Genealogical Society, 2006, 674 pp. An index to all Virginia estate-related records found in

will books and other collections. Volume 7 covers the counties of Amelia, Brunswick, Cumberland, Goochland, Lunenburg, Mecklenburg, Nottoway, Powhatan and Prince Edward. Other counties are addressed in volumes 1-6, previously purchased.

R929.3755 PIP V.7

- *Scottish Ancestry: Research Methods for Family Historians*, revised Second Edition by Sherry Irvine, Ancestry, 2003, 249 pp. How to conduct your Scottish family history research. This book discusses the various record types and cultural elements that will help trace your roots, including how to utilize the latest computer and Internet sources.  
R929.107204 IRV 2003
- *Ancestral Trails : The Complete Guide to British Genealogy and Family History*, Second Edition, by Mark Herber. Genealogical Publishing Co., 2006, 873 pp. This book guides the researcher through the voluminous British archives, extending back to medieval times, and provides a detailed view of the records and published sources available. From newspapers and directories, civil, legal and religious records to personal recollections, photographs and other memorabilia, every kind of records is analyzed and the researcher is guided to the many detailed finding aids or indexes. [notes abstracted from [www.genealogysupplies.com](http://www.genealogysupplies.com)].  
R929.107209 HER 2006

If you have a suggestion for a genealogy-related reference book to add to our collection at the Bellevue Regional Library, or if you have one to donate, please let the Book Acquisition Committee know by contacting Sarah Fleming at 425-957-1134 or Carl Cason via e-mail at [ccason621@msn.com](mailto:ccason621@msn.com). Suggestion forms are available at the General Membership meetings.

[Submitted by EGS Acquisitions Chair, Carl Cason]

### EGS SCANDINAVIAN INTEREST GROUP

Meeting Summary, Tuesday, April 10, 2007

The Scandinavian Interest Group meeting was spent exploring Internet sites devoted to genealogical pursuits in Sweden, Norway, Finland, and Denmark. Our meeting room is equipped with an overhead projector that can display the

computer's screen image on a movie screen, making it very easy to show home pages, search results, maps, and other goodies plucked from the Internet.

We did not look for specific data this time, but were interested in finding sites that contain databases searchable for free. Norway's national archive is a leader in the effort of putting church books and other vital records online for free searching. We've heard a rumor that Denmark's national archive is beginning a project to put church records online for free searching, but did not find an active site. Sweden's archives are working on similar resources, but at a seeming snail's pace. There are several local genealogical societies in Sweden which use volunteers to put church books online for free searching. At this point the widest assortment of Swedish databases are on a pay site, [www.Genline.com](http://www.Genline.com), which charges fees similar to those of our own Ancestry.com.

A Swedish site, [www.eniro.se](http://www.eniro.se), contains zoomable maps that can be superimposed on aerial photos, similar to the satellite photo databases provided by Google.com. Gene Fagerberg found his cousin Karin Josefsson's house at the base of Taberg Mountain using this site.

Another Swedish site, [www.lantmateriet.com](http://www.lantmateriet.com) sells maps of various scales and types. The site contains a search engine that can find [correctly spelled!] place names and display the selected place on a map, along with a list of similar names.

Members reported a couple of "brick-wall breakthroughs" this month. Sandy Arildson found her grandmother and her 3 children leaving Liverpool for New York in 1893, in a passenger list at the site [www.findmypast.com](http://www.findmypast.com). This site links to one called [www.ancestorsonboard.com](http://www.ancestorsonboard.com), a work-in-progress database of passengers outbound from England to ports around the world, including the U.S. The database is being assembled by [www.findmypast.com](http://www.findmypast.com) in association with the British National Archives. This is a great place to look for folks from 1890 onward, even though they might be absent from the Ellis Island database. Norma Wakeley found information about

her grandmother by posting an enquiry to Vestre Toten, Norway. Her grandmother emigrated from Oslo on April 28, 1876, when she was a child, age 11, and traveled with Ann Marie Martinsdotter, age 24, a person unknown to Norma. A Florida relative's History of the Korsen Family contained information about Norma's grandmother's uncle, and Norma noted that his wife was Berta Helena Martinsdotter Amlien. When

Norma e-mailed her relative to inquire, she found that Ann Marie Martinsdotter was an older sister of Berta's!

Come see us at our May 8 meeting at the Puget Sound Regional Archives on the BCC campus.

[Submitted by EGS Member, Gene Fagerberg]

### EGS CORRECTION AND APOLOGY

We incorrectly announced that we sent a sympathy card at the death of Lucille Webster. We are happy to report that she is very much alive and well.

Our sympathy goes TO Lucille at the death of her husband and we sincerely regret the error.

[Submitted by EGS Sunshine Chair, Ielene Edmondson]

### BOOKSTORE/SUPPLY TABLE NEWS

As many of you have read, we are phasing out the books on the book/supply table. So, we are now having a sale! All books and supplies have been marked down, so shop early to take advantage of the savings and for the best selection. Once the books are gone, we will not be re-ordering except for special events and speakers.

One book you may want to look at is *Getting It Right - The Definitive Guide to Recording Family History Accurately*, written by Mary H. Slawson, a local Redmond author. This book originally sold for \$19.95 and is now on sale for \$12.00. This guide book helps you eliminate time-consuming duplications in your family history research by showing you how to record the information in a standardized way. You'll learn the rules and language you need so your research will fit smoothly and efficiently into the jigsaw puzzle of family histories being assembled around the world. This book offers a systematic approach to recording information in a way that will benefit families now and for generations to come.

[Submitted by EGS Bookstore/Supply Table Chair, Kim Nichols]



## WEBSITE SURVEY

EGS Website task force would like your opinion. Please help us to improve the EGS website by answering the following questions. Once you complete our survey, you can then either:

1. Mail this sheet to Kimberly Nichols, 12422 219<sup>th</sup> Place SE, Snohomish, WA 98296
2. Email it to [kimberly@dormik.com](mailto:kimberly@dormik.com)
3. Bring the completed form to the May EGS meeting.

We appreciate you taking the time to answer these questions. Your input is very important!

Thank you!

- 
1. Do you use a computer? YES NO
  2. What operating system do you use?  
Windows98 ME 2000 XP Vista Mac other\_\_\_\_\_
  3. What internet browser do you use?  
Internet Explorer IE7 Firefox Mozilla Netscape AOL MSN other\_\_\_\_\_
  4. How do you connect to the Internet?  
Cable DSL 56K dial-up modem Wireless Satellite other\_\_\_\_\_
  5. Where do you use a computer?  
Home Work library other\_\_\_\_\_
  6. What do you use a computer for?  
Email browsing news music video photos Genealogical researching  
online classes banking other\_\_\_\_\_
  7. Have you visited EGS's website?  
YES NO If no, why not? \_\_\_\_\_
  8. If so, how often have you visited it?  
Once a week\_\_\_ once a month\_\_\_ once a year \_\_\_ more than once a week\_\_\_ every day\_\_\_
  9. How much time do you spend on the website?  
Less than 1 minute\_\_\_ 1-5 minutes\_\_\_ 5-15 minutes\_\_\_ More than 15 minutes\_\_\_
  10. Do you use the EGS website for:  
meeting information SIG information calendar contact information read the newsletter  
the links other
  11. What things would you like to see on the EGS website?

12. What things do you think we do not need on the website?

13. Do you get/read the EGS newsletter online? YES NO

14. Would you like to get/read the EGS newsletter online? YES NO

If yes, please list your email here so the newsletter editor can contact you.

\_\_\_\_\_

15. Here is a list of things we are considering adding to the EGS website. Please indicate which you would use and which you would find interesting.

*(continued on next page)*

| ITEM                                                                                         | I would use this | It would be interesting |
|----------------------------------------------------------------------------------------------|------------------|-------------------------|
| SIG information                                                                              |                  |                         |
| EGS history pages                                                                            |                  |                         |
| Surname file                                                                                 |                  |                         |
| Society By-laws                                                                              |                  |                         |
| Email addresses for officers & SIG leaders                                                   |                  |                         |
| Query information                                                                            |                  |                         |
| A look-up page listing books and lookup volunteers                                           |                  |                         |
| Calendar of events                                                                           |                  |                         |
| Links to other societies, libraries, etc.                                                    |                  |                         |
| EGS newsletters                                                                              |                  |                         |
| Bellevue Regional Library Genealogical holdings                                              |                  |                         |
| Membership information                                                                       |                  |                         |
| Message board or blog                                                                        |                  |                         |
| Site map of the website                                                                      |                  |                         |
| Search box to search the website                                                             |                  |                         |
| EGS speaker handouts                                                                         |                  |                         |
| Special project information like cemetery listings, marriage records, database records, etc. |                  |                         |
| Other (please list)                                                                          |                  |                         |
|                                                                                              |                  |                         |

[Submitted by the EGS Website Task Force: Kim Nichols Chair, Bob Barnes, Pete Clarke, and Dave Abernathy]



**FREE OFFER**

**FREE GENEALOGICAL RESEARCH HELP:**

Genealogical research help is available at the Bellevue Regional Library at NE 12<sup>th</sup> St. and 110<sup>th</sup> Ave. NE in Bellevue. Eastside Genealogical Society volunteers are waiting to help you with problems and questions. They are available in **room 6** on the second floor of the library, to the left of the reference desk.

Hours are **Tuesdays** from 7-9 PM and **Wednesdays** from 1-3 PM.

▶ **PLEASE HELP!** ◀▶ **VOLUNTEER OPPORTUNITIES** ◀

Do you have time on your hands? Could you donate a few hours a week [or a month] to the Eastside Genealogy Society to help keep our operation running smoothly? EGS is only as strong as our volunteers. Here are a few recent openings due to illness, moving, grandchildren needing care, or personal life changes.

▶ **Nominating Committee** - Members are needed to work on the Nominating Committee each spring to locate new officers for EGS. Contact Maxine Klink at 425-836-0930 or [marymaxklink@comcast.net](mailto:marymaxklink@comcast.net).

▶ **Education Committee** - New Education Chair is needed due to retirement of Dana Siverling for health reasons. Contact Norb Ziegler at 425-557-2108 or [zieglerwa@sprintmail.com](mailto:zieglerwa@sprintmail.com) if you are interested.

▶ **Library Committee** - A volunteer needed as an assistant to the EGS Library Chair, Winnie Sihon. Contact Winnie Sihon at 425-746-3573 or [wsihon@comcast.net](mailto:wsihon@comcast.net).

▶ **Research Assistants**— We need an additional volunteer to help researchers at our afternoon or evening help sessions at the library, due to a recent vacancy. Contact Winnie Sihon at [wsihon@comcast.net](mailto:wsihon@comcast.net) or 425-746-3573.

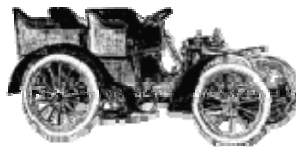
▶ **Publicity Chair** - A volunteer is needed for the vacated Publicity Chair. Out going chair person will stay and train. Call Norb Ziegler at 425-557-2108 or [zieglerwa@sprintmail.com](mailto:zieglerwa@sprintmail.com)

### Local Meetings and Events

1. We want to get on your calendars early for next year! **Family History Expo VII** will be held on November 10, 2007 (2nd Sat. in November) from 9:00-5:00 PM at the Redmond Stake Center of the Church of Jesus Christ of Latter-day Saints, 10115 172nd Ave. NE, Redmond, WA and will be a day full of free classes on family history research. Classes offered will cover all experience levels, from beginners to advanced researchers.
2. **Bellevue's 2007 Strawberry Festival** will be held June 23rd and 24th in the Crossroads International Park in Bellevue sponsored by the Eastside Heritage Center. There will be an auto show of classic cars, two stages for entertainment, a family fun area, clowns, balloons, face painting, vendors, and of course strawberry shortcake.
3. **The Eastside Heritage Center** invites you to an afternoon tea, served in traditional English style, the Winters House in Bellevue on Saturday, May 12, 2007. There will be two seatings at 1:00 PM and 3:00 PM, ages 10 and up, \$15.00 per person. The Winters House at 2102 Bellevue Way SE is the only building in Bellevue on the National Historic Register. Space is limited so call soon for reservations, 425-450-1049.
4. **Fraser Cabin Heritage Programs** will be presented by Bellevue Heritage Center for the third year with Bellevue Parks and Community Services at the 1888 Fraser Cabin at Kelsey Creek Farm Park in Bellevue. These programs are free and for all ages. Call for information at 425- 450-1049 or visit [www.eastsideheritagecenter.org](http://www.eastsideheritagecenter.org) . Programs are "Farm Life" on May 19, and "Tools and Log Cabin Construction" on June 16th.
5. **Old Redmond Historic Walking Tours Return.** If you live in Redmond, you probably drive along Leary Way daily. But do you know the histories of our oldest buildings? Like, which one was both an undertaker's premises and a bordello? Society board member Tom Hitzroth will educate and entertain folks with walking tours that explore those histories. This year's dates are May 20, June 17, and September 16, 2007. Tours run from 1:00 to 2:30 p.m., and walkers meet on the front steps of the Justice White House, 7730 Leary Way. A tour will not be held if it rains. A fee is charged to help fund Society research. Pre-registration is required. To register, e-mail Tom at [thitzroth@msn.com](mailto:thitzroth@msn.com) or phone the Redmond Historical Society office at 425-885-2919.
6. **The Redmond Historical Society** will meet on Saturday, May 12, 2007, 10:30-11:45AM. We will be meeting in Room 2 of the Redmond Library, 15990 NE 85 Street, Redmond, WA. Shirley Haines will be talking about her work at the Lake Washington Shipyards in Kirkland, where she went to work as a teenager. She is a Sergeant Major retired from the U.S. Marines after 35 years. Shirley is the second longest working employee at Boeing, having been there for 60 years. Also, Charles Payton will be on hand to receive the History Hero award.



| EGS 2007 MEETING CALENDAR                                                                   |                                                                                                                                                                                                                                   |
|---------------------------------------------------------------------------------------------|-----------------------------------------------------------------------------------------------------------------------------------------------------------------------------------------------------------------------------------|
| EGS Group Name                                                                              | Meeting Notice                                                                                                                                                                                                                    |
| EGS Board Meeting<br>(First Thursday 10:00 AM)                                              | The EGS Board will meet on May 3, 2007 at 10:00 AM at the Redmond Library.                                                                                                                                                        |
| EGS General Meeting<br>(Second Thursday, 7:00 PM)                                           | The Eastside Genealogical Society will hold its general meeting on Thursday, May 10th at 7:00 PM in the Bellevue Regional Library. The Supply Table opens at 6:30 PM.                                                             |
| Computer Interest Group<br>(Fourth Saturday, 9:30 AM)                                       | Will meet Saturday, May 26th, 9:30 am in the Community Room at Crossroads Mall.<br>(Dave Abernathy, 425-271-4885 or <a href="mailto:DaveA@schmeckabernathy.com">DaveA@schmeckabernathy.com</a> )                                  |
| Czech/Slovak Interest Group<br>(Check EGS Bulletin each month for meeting time information) | Will meet next on Saturday, <b>June 23rd</b> at 9:30AM to noon at Firestation #22 in Houghton (Kirkland)..<br>(Rosie Bodien, 425-828-0170 or <a href="mailto:rosie@bodien.org">rosie@bodien.org</a> .)                            |
| EGS Lunch Bunch<br>(Fourth Thursday, 11:30 AM)                                              | Meets every fourth Thursday at Crossroads Food Court.<br>(Call Myra McDowell at 425-641-4650 or <a href="mailto:mcdowellml@yahoo.com">mcdowellml@yahoo.com</a> )                                                                  |
| German Interest Group<br>(First Friday, 1:00 PM)                                            | Will meet Friday, May 4th, 1:00 PM - 3:00 PM, at Crossroads Mall Community Room.<br>(Call Ann Passe 206-232-1104 or <a href="mailto:anmp42@comcast.net">anmp42@comcast.net</a> )                                                  |
| Irish Interest Group<br>(First Wednesday, 10:00 AM)                                         | Will meet Wednesday, May 2nd, at the Lake Hills Library, 10:00AM to 12:00 noon. We will have some book reviews of Ireland based books.<br>(Call Ann Lamb 425-557-0440 or <a href="mailto:AnnL7777@aol.com">AnnL7777@aol.com</a> ) |
| Italian Interest Group<br>(Third Saturday, 1:30 PM)                                         | Will meet Saturday, May 19, 1:30 PM to 3:30 PM at the Lake Hills Library in Bellevue.<br>(Mary Sangalang, 425-649-2250 or <a href="mailto:collectingroots@att.net">collectingroots@att.net</a> )                                  |
| Scandinavian Interest Group<br>(Second Tuesday, 10:00 AM)                                   | Will meet Tuesday, May 8th at 10:00AM to noon in the Regional Archives Building at Bellevue Community College.<br>(Gene Fagerberg at 206-783-4649, <a href="mailto:wefagerberg@comcast.net">wefagerberg@comcast.net</a> )         |
| Shore to Shore Interest Group<br>(changes monthly, call Jan )                               | Will meet on Monday, May 7th to go to the Fiske Library.<br>(Call Jan Henderson 425-483-0334)                                                                                                                                     |



| LOCATION ADDRESSES                                                                                              |                                                                                                    |                                                                                       |
|-----------------------------------------------------------------------------------------------------------------|----------------------------------------------------------------------------------------------------|---------------------------------------------------------------------------------------|
| Bellevue Regional Library<br>NE 12th St. and 110th Ave. NE<br>Bellevue, WA<br>425-450-1760                      | Crossroads Mall Shopping Center<br>Community Meeting Room<br>NE 8th and 156th Ave NE, Bellevue, WA | FHC - Bellevue<br>10675 NE 20th St<br>Bellevue, WA<br>425-454-2690                    |
| FHC - Kirkland<br>7910 NE 132nd St.<br>Kirkland, WA<br>425-821-8781                                             | Issaquah Public Library<br>140 East Sunset Way<br>Bellevue, WA<br>425-392-5430                     | Lake Hills Library<br>15528 Lake Hills Blvd. SE<br>Bellevue, WA<br>425-747-3350       |
| National Archives and Records Admin.<br>6125 Sand Point Way NE<br>Seattle, WA 98115-7999<br>206-336-5115        | LDS Fam. History Center-Factoria<br>4200 124th Ave. SE<br>Bellevue, WA<br>425-562-0361             | LDS Fam. Hist. Center - Redmond<br>10115 172nd Ave. NE<br>Redmond, WA<br>425-861-9273 |
| Newport Way Library<br>14520 SE Newport Way<br>Bellevue WA<br>425-747-2390                                      | North Bend Library<br>115 East Fourth St<br>North Bend, WA<br>425-888-0554                         | Redmond Regional Library<br>15990 NE 85th St<br>Redmond, WA<br>425-885-1861           |
| Wa State Puget Sound Regional Archives<br>BCC, 3000 Landerholm SE, MS-100<br>Bellevue, WA 98007<br>425-564-3940 | Seattle Public Library<br>1000 Fourth Ave<br>Seattle, WA<br>206-386-4636                           | Snoqualmie Public Library<br>38580 SE River Street<br>Snoqualmie, WA<br>425-888-1223  |
| Firehouse #22<br>6602 108th Ave NE<br>Kirkland, WA                                                              |                                                                                                    |                                                                                       |

## 2007 CALENDAR OF UPCOMING SEMINARS AND EVENTS

- May 16-19      **Richmond, VA:** The National Genealogical Society together with the Virginia Genealogical Society, the Fairfax Genealogical Society, and the Genealogical Research Institute of Virginia (GRIVA) will be hosting this year's conference which will bring together genealogists and family historians from around the country and beyond. More info at [www.ngsgenealogy.org](http://www.ngsgenealogy.org)
- May 12      **San Diego, CA:** **Saturday, May 12th** the Computer Genealogy Society of San Diego and the San Diego Genealogical Society will present an all-day seminar with Dick Eastman. Presentations will include: - Grandpa in Your Pocket, The Internet - The Good, the Bad and the Ugly, Google for Genealogists, Putting the Genes in Genealogy.
- May 19      Burlington, WA: Skagit Valley Genealogical Society presents a Genealogy Conference on Saturday, May 19, 2007 9:00 am to 4:00 pm at the Burlington Community Center, 1011 Greenleaf Avenue, Burlington, WA featuring Sandra Hargreaves Luebking.
- June 8-10      **Burbank, CA:** [Southern California Genealogical Society 38th Annual Genealogy Jamboree](http://www.scgsgenealogy.com) features three days of lectures, exhibitors, and one-on-one research consultation by many of genealogy's most respected and knowledgeable speakers, for all experience levels and geographic / ethnic interests; a special lecture track by the Creole Heritage Center, Northwestern State University, Natchitoches, Louisiana, "Louisiana - California Creole Connections"; a day-long Family History Writers Conference, with lectures and workshops to inspire family history writers; dozens of exhibitors and vendors with products and services to support your genealogical research; and much more. For more info go to [www.scgsgenealogy.com](http://www.scgsgenealogy.com)
- June 24-29      **Mansfield, Ohio:** The Ohio Genealogical Society announces its annual summer genealogy work shop to be held at The Society's library on June 24-29. The society's headquarters and library is located at 713 S. Main St., Mansfield, OH 44907. This year the workshop will feature nationally known speakers who will cover many topics of interest to Ohioans and other researchers, such as cemeteries, land records, church records, vital records, internet update, immigration, and military records. Presentations will also cover research in Pennsylvania, Virginia, and New England, and German, Italian, and Scots-Irish research, among others. For more info go to [www.ogs.org](http://www.ogs.org).
- July 12 – 14      **Salt Lake City, UT:** The Federation of East European Family History Societies (FEEFHS) will hold their 2007 Conference "Access Your Ancestors: One On One Will Get It Done" July 12-14 in Salt Lake City, Utah at the Plaza Hotel and the Family History Library. The feature for this year's Conference will be individual consultations, by appointment, with the FEEFHS experts and Family History Library staff. A cultural presentation entitled "Got Culture? See, Hear and Experience Your Ethnicity" will be presented Thursday evening. The annual banquet will be on Friday night and tours to hear the world famous Mormon Tabernacle Choir broadcast, Temple Square and other historic sights will round out the activities. More Info: [www.feeffhs.org](http://www.feeffhs.org)
- August 15-18      **Ft. Wayne, IN:** FGS Conference will be themed " Meeting at the Crossroads of America." Are you planning to attend the Federation of Genealogical Societies' annual conference in Fort Wayne, Indiana on August 15 to 18, 2007? If so, you can sign up now and obtain a \$30.00 early bird registration discount. For more information go to [www.fgs.org](http://www.fgs.org).
- September 15      **Anchorage, AK:** The Anchorage Genealogical Society presents its 21st Annual Family History Seminar featuring Sharon De Bartolo Carmack on September 15, 2007. For more info go to [www.anchoragegenealogy.org](http://www.anchoragegenealogy.org)



**EASTSIDE GENEALOGICAL SOCIETY CONTACTS**

|                            |                    |              |                                |
|----------------------------|--------------------|--------------|--------------------------------|
| President*                 | Norb Ziegler       | 425-557-2108 | zieglerwa@sprintmail.com       |
| Vice President*            | Bob Barnes         | 425-747-4863 | rstithbarnes@hotmail.com       |
| Secretary*                 | Barbara Zanzig     | 425-828-0380 | hertz@isomedia.com             |
| Treasurer*                 | Pete Clarke        | 425-643-4855 | pwc37@comcast.net              |
| Trustee*                   | Sharron Filer      | 425-885-7213 | n.sfiler@gte.net               |
| Past President*            | Bill Sperber       | 425-739-9219 | bsperber@comcast.net           |
| Education Chair*           | (need volunteer)   |              |                                |
| Historian                  | Walta McCarley     | 425-746-7557 | wmccarley@yahoo.com            |
| Library Chair*             | Winifred Sihon     | 425-746-3573 | wsihon@comcast.net             |
| Acquisitions               | Carl Cason         | 425-402-1635 | ccason621@msn.com              |
|                            | Sarah Fleming      | 425-957-1134 | sarahrosefleming@earthlink.net |
| Periodicals/Vertical Files | LaVola Schrum      | 425-747-2501 |                                |
| Membership Chair*          | Dorothy Mehrer     | 425-822-7316 | dmehrer@netscape.com           |
| Newsletter Editor*         | Pat Clarke         | 425-643-4855 | pbclarke@comcast.net           |
| Newsletter Contributors    | Mickey Main        | 425-747-2038 | mickeymain@comcast.net         |
|                            | Gloria Brown       | 425-746-1875 |                                |
|                            | Sharron Filer      | 425-885-7213 | n.sfiler@gte.net               |
| Newsletter Mailing         | Jack & Jean Newman | 425-746-2324 | jnewman495@earthlink.net       |
|                            | Pete Clarke        | 425-643-4855 | pwc37@comcast.net              |
| Nominating Chair*          | Maxine Klink       | 425-836-0930 | marymaxklink@comcast.net       |
|                            | Marty Gale         | 206-232-6471 | martygale@futuretense.net      |
| Program Chair*             | Judy Meredith      | 425-702-9321 | ja.meredith@verizon.net        |
| Program Summary            | (need volunteer)   |              |                                |
| Publicity                  | (need volunteer)   |              |                                |
| Representatives:           |                    |              |                                |
| DAR                        | Donna Hart         | 425-831-5978 | carldonna1@comcast.net         |
| AKCHO                      | Bob Sandbo         | 425-454-5606 | bobpat9@jps.net                |
| Bellevue Reg Library       | Pat Sandbo         | 425-454-5606 | bobpat9@jps.net                |
| FGS                        | Peter Robertson    | 206-236-2473 | pnrmercerc@earthlink.net       |
| SIG Representative         | Dave Abernathy     | 425-271-4885 | DaveA@schmeckabernathy.com     |
| Sunshine Chair*            | Ielene Edmonson    | 425-454-1943 | jojo4@earthlink.net            |
| Supply Table Chair*        | Kim Nichols        | 360-668-3937 | kimberly@esandg.com            |
| Surname File               | Walta McCarley     | 425-746-7557 | wmccarley@yahoo.com            |
| Webmaster                  | Kim Nichols        | 360-668-3937 | kimberly@esandg.com            |
| * EGS Board Member         |                    |              |                                |

**Special Interest Group [SIG] Contacts**

|                       |                   |              |                            |
|-----------------------|-------------------|--------------|----------------------------|
| Computer              | Dave Abernathy    | 425-271-4885 | DaveA@schmeckabernathy.com |
| Czech/Slovak          | Rosie Bodien      | 425-828-0170 | rosie@bodien.org           |
| German                | Ann Passe         | 206-232-1104 | annp42@comcast.net         |
| Irish                 | Ann Lamb          | 425-557-0440 | AnnL7777@aol.com           |
| Italian               | Mary D. Sangalang | 425-649-2250 | collectingroots@msn.com    |
| Lunch Bunch           | Myra McDowell     | 425-641-4650 | mcdowellml@yahoo.com       |
| Portuguese (inactive) | Barbara Guyll     | 425-746-5603 | barbaraguyll@comcast.net   |
| Scandinavian          | Gene Fagerberg    | 206-783-4649 | wefagerberg@comcast.net    |
| Shore to Shore        | Jan Henderson     | 425-483-0334 | jan.henderson1@comcast.net |



Eastside Genealogical Society  
 P.O. Box 374  
 Bellevue, WA 98009-0374

Non-Profit  
 Organization  
 US Postage Paid  
 Issaquah, WA 98027  
 Permit No. 601

DATED MATERIAL  
 PLEASE DO NOT HOLD

#### THE EASTSIDE GENEALOGICAL SOCIETY

##### PURPOSE:

The EGS provides members a forum for learning and the exchange of information related to genealogy. The Society obtains and provides resources for use by members, encourages genealogical research and education, and provides community outreach through programs, classes, seminars and library volunteers.

##### MEETINGS:

EGS monthly meetings are held on the second Thursday of each month (except December) at 7:00 P.M. at the Bellevue Regional Library, NE 12th Street and 110th Ave. NE, Bellevue WA. The Supply/Book Table, get acquainted, browse, ask questions session is open at 6:30 P.M.

##### MEMBERSHIP:

Effective 1 January 2001, membership dues are: Individual —\$17, Couple—\$22, Senior —\$15, Senior Couple, \$19, Lifetime — 15 times annual membership. To join the society, send your check with your name, phone number, address (nine digit zip please) and e-mail address (if applicable) to the address at the bottom of this page.

##### NEWSLETTER SCHEDULE:

The *Bulletin Board* is published each month, except December. Submission of news and articles to the *Bulletin Board* must be in writing and received **by the 15th of each month** for inclusion in the following month's newsletter. If you are unable to meet the deadline, please call Pat Clarke at 425-643-4855 to make special arrangements. Please mail submissions to: Pat Clarke, 6000 145th Ave SE, Bellevue WA 98006 or e-mail to: [pbclarke@comcast.net](mailto:pbclarke@comcast.net). **Note:** The EGS Board and the *Bulletin Board* reserve the right to limit and prioritize event announcements, space permitting, to non-profit organization items of genealogical interest. Neither the EGS nor the editors of the *Bulletin Board* accept responsibility for errors of fact or judgment in the material submitted to and printed in the *Bulletin Board*. If errors are brought to our attention, we will try to correct them.

The *Bulletin Board* is a publication of:

The Eastside Genealogical Society  
 P.O. Box 374  
 Bellevue, WA 98009-0374