

# EASTSIDE GENEALOGICAL SOCIETY

## BULLETIN BOARD



MAY/JUNE 2012  
VOLUME XXX, NUMBER 6

The Eastside Genealogical  
Society

P.O. Box 374  
Bellevue WA 98009-0374  
[www.rootsweb.ancestry.com/~wakcegs/](http://www.rootsweb.ancestry.com/~wakcegs/)

**Please Note: EGS will be meeting at the Redmond Library while a construction project takes place at the Bellevue Regional Library.**

### MAY EGS ANNUAL MEETING INFORMATION

**Date:** Thursday, May 10, 2012  
**Time:** Welcome New Members 6:30 PM  
Meeting Begins 7:00 PM  
**Location:** **Redmond Library —Note Location Change**  
**Topic:** *Dating Old Photographs*  
**Speaker:** Carolyn Blount, Fiske Genealogical Library

**About The Program:** Carolyn Blount has long been an active member of the Fiske Genealogical Library fulfilling many roles in its administration. She is also interested in dating old photographs through dress and other clues. On Thursday, May 10, she will be here to explain how to do this. You may bring one mystery picture and, if we have time, Carolyn can give you some clues as to the date it was taken.

### JUNE EGS MEETING INFORMATION

**Date:** Thursday, June 14, 2012  
**Time:** Welcome New Members 6:30 PM  
Meeting Begins 7:00 PM  
**Location:** **Redmond Library —Note Location Change**  
**Topic:** *Genetic Genealogy Basics*  
**Speaker:** Herb McDaniel, co-chair Seattle Genealogical Society  
DNA Special Interest Group

**About the program:** We will review genetic genealogy and the types of testing available--paternal and maternal DNA tests to determine haplotype and haplogroup for comparison with other's results, also autosomal DNA tests to determine degrees of relationships not in the direct ancestral lines.

We will discuss the major companies involved in DNA testing, the merits of each, and their database size to help you determine which company is best suited for your specific needs. Most companies offer various levels of testing with commensurate increases in cost.

We will look at examples of actual results from various DNA testing companies and how they are presented. We will also cover who you should test, and it may be a relative other than yourself depending on what your goals are. We will review various DNA projects such as surname, geographical or haplogroup to discuss the advantages of joining such a group.

And we will cover what DNA testing cannot do for you, so that you can make informed decisions on whether tests will be a benefit to you.

Herb McDaniel is an alum of the University of *(continued next page)*

INSIDE THIS ISSUE:	
President's Message	2
Board Meeting Minutes	3
Welcome New Members	4
Genealogy Webinars	5
Help Finding Female Ancestors	7
When You Can't Find the Vital Record	8
How Many 1940 Census Records Indexed?	9
SIG Calendar	10
EGS Contacts	11

Washington and retired from Boeing as a space program systems engineering manager. He currently co-chairs the Seattle Genealogical Society's DNA Special Interest Group. He has been involved in the genealogical research of his ancestors for over 20 years. When DNA testing first became available he tested to confirm his maternal and paternal lines. When autosomal testing was recently introduced he tested to find unknown cousins. His testing was performed first by National Geographic, then Family Tree DNA, DNA Heritage, and 23andMe.

## PRESIDENT'S MESSAGE

Hi All,

It has been my privilege and pleasure to be your president these past 2 years! Now it's time for some new blood on the board. Our nominating chair, Bob Barnes, is beating the bushes for presidential candidates as well as candidates for secretary.

To make this society work we all need to pitch in. Not everyone has to run for president, but all of us can contribute something.

We also have at least a couple of special interest groups that are languishing due to lack of leadership: the Canadian group and Shore to Shore. The first is self-explanatory and the second one is for people who want to get together to visit local libraries, NARA and so forth.

Our publicity chair, Dorothy Pretare, has been looking for an assistant for months. She travels frequently and could use some help when she's out of town. She's extremely organized, so this would be a no-brainer!

We also need volunteers periodically to help man our booth at such things as the upcoming Pickering Barn Volunteer and Hobby Expo which will be April 28th from 9:00-2:00. Bob and I would really appreciate some help here!

Helping out with these things has benefits other than just spreading the work around. You get acquainted with fellow members (as a friend said, "Good to get to meet other obsessive-compulsives!"), and exchange information and insights into your brickwalls—who knows? You might find a cousin or break down that brickwall!



One other thing: if you have some interest in taking on a chairmanship, but think you don't have time or travel too much, get a friend to co-chair.

If everyone does something, no matter how small, your society benefits and so will you! Let any board member know what you'd like to do or if you want to run for office, call Bob. Trust me—he will be overjoyed!

Judy Meredith, President

## EGS BY-LAWS CHANGE

The Board of Directors of EGS is requesting a change to the by-laws regarding the number of meetings per year.

Article IV, Section 1 now reads:

“General Membership Meetings shall be held at monthly intervals, at least 10 per year in number at a place and time to be determined by the Board of Directors. The time, date, and place of General Membership Meetings to be determined by the Board of Directors upon sufficient notice to members.”

Requested change:

“General Membership Meetings shall be held at monthly intervals, at least 8 in number...”

The vote on this change will be at the May General Membership Meeting.

**EGS BOARD MEETING – SUMMARY, MARCH 2012**

**Present:** Judy Meredith, President; Carol Pattison, Vice-President; Sharron Filer, Trustee; Bob Barnes, Education and Past President; Sarah Fleming, Book Acquisitions

Treasurer's report was approved unanimously. Insurance renewal due in September.

**Book Acquisition Committee:** Mary Anagnost has resigned. Bob Barnes volunteered to join the committee.

**Education:** The next classes will be on Census and City Directories, in Issaquah March 18 from 2-4 PM. A class on getting more out of Ancestry.com will be held April 26 at the Redmond Library.

**Library:** There are links to genealogical books at KC libraries.

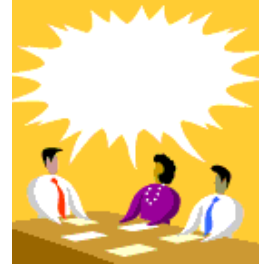
**Nominating Committee Chair:** The president and secretary positions will be open.

**Programs:** Ideas discussed were identifying photos, using New FamilySearch, DAR, and military records.

**Publicity:** Dorothy Pretare asked that we be specific on needs.

**Old Business:** We will meet to sort archival materials held in Jack Newman's garage in late April or May.

**New Business:** Discussion regarding low summer attendance resulted in a motion to amend the EGS By-Laws to change the number of meetings from at least 10 per year, to 8 or more. The motion will be presented to the membership at the April meeting.

**EGS RESEARCH ASSISTANCE HOURS CHANGE**

Because of the parking crunch at Bellevue Library, EGS Research Assistance will only be offered on the 1st and 5th Tuesday Evenings from 7:00 to 9:00 PM. Wednesday afternoon Research Assistance will continue from 1:00 – 3:00 PM upstairs in Room 6. *(Submitted by Winnie Sihon, Library Volunteers Chair)*

**LIBRARY AND OTHER VOLUNTEERS NEEDED**

Volunteers are needed for the first and third Wednesday afternoons from 1:00 to 3:00 PM. Jack Newman is resigning after many years of providing help at these times. Anyone interested should contact Winnie Sihon at [wsihon@comcast.net](mailto:wsihon@comcast.net) or 425-793-5424. Help Desk volunteers are needed for other times as well.

An assistant for our Library Chairman is also needed. And there is a need for a Publicity assistant. These are not terribly time consuming. For information about these positions, contact Judy Meredith (425-702-9321) or the appropriate chair person listed in the back of the Bulletin.

**FREE GENEALOGICAL RESEARCH HELP**

Genealogical research help is available at the Bellevue Regional Library, located at NE 12<sup>th</sup> St. and 110<sup>th</sup> Ave. NE in Bellevue. Eastside Genealogical Society volunteers are waiting to help your with problems and questions. They are available in room 6 on the second floor of the library, to the left of the reference desk. Hours are on the 1st and 5th Tuesday evenings from 7:00-9:00 PM and Wednesdays from 1:00-3:00 PM.

## WELCOME NEW MEMBERS

Please welcome the following new EGS members:

- ◆ Patricia CHAMBERS
- ◆ Claire GEBBEN researching southwest Germany/Rhineland and Scotland.
- ◆ Penny KAHN
- ◆ Ruth TOLMASOFF researching BAKER in Ohio, McDOLE in Pennsylvania, AMSPOKER in New Jersey, SHAW in Ireland, TOLMASOFF in Russia, and BEZAYIFF in Azerbaijan.
- ◆ Gwen ZIERDT researching ZIERDT worldwide, NELSEN in eastern Washington, RYAN in Chicago, and INMAN in Chicago.
- ◆ Lynelle BOLLINGER
- ◆ Larry and Kay MAYHEW

## SGS SPRING SEMINAR WITH GEORGE G. MORGAN OF THE GENEALOGY GUYS PODCAST

Internationally known genealogist George G. Morgan will headline the Spring 2012 Seminar presented by the Seattle Genealogical Society from 9:00 AM to 3:00 PM on Saturday, May 19, at the Museum of History and Industry, 2700 24th Avenue East, Seattle.

Morgan will talk about how to develop an ancestry profile, methods for advanced research, and "sidestep genealogy," or creative ways to solve problems. He is the author of 10 books and hundreds of articles published in magazines and on websites, as well as president of Aha! Seminars, Inc., a company that provides continuing education for libraries and genealogical societies around the world.

Fees for seminar participants are \$40 for SGS members and \$50 for non-members who pre-register. Walk-ins will be charged \$10 more. Learn more about the Spring 2012 Seminar on the new SGS website. See <http://seattlegenealogicalsociety.org/content/seminars> for the brochure and registration information. Registration deadline is May 11. More information is available by calling SGS at (206) 522-8658 or e-mailing [sgsseminar@gmail.com](mailto:sgsseminar@gmail.com).

## OLD REDMOND HISTORIC WALKING TOURS 2012



Redmond's Centennial year is here. Take our guided walking tour of the historic downtown core. It is guaranteed to provide facts, figures, and fun, since historian Tom Hitzroth will be the man with the stories, gossip, and names. Did you know in whose building an alleged bordello operated? Hint: He would later become Redmond's longest serving mayor!

Tom is expanding his guide services in honor of the Centennial, offering five downtown tours this year: May 6, May 20, June 3, June 17, and September 9. Tours run from 1:00 to 2:30 PM, beginning on the front steps of the Justice White House, 7730 Leary Way NE., at the west end of Redmond Town Center where the Saturday Market is held. A tour will not be held if it rains. He is also doing a tour of the Redmond Cemetery on July 15 and one of our haunted history on September 30. The starting place for these two has not yet been determined.

Registration is required by the Thursday before the tour. A fee of \$8 per person will help fund Society research. Contact the Redmond Historical Society office at 425-885-2919, or email at [info@redmondhistoricalsociety.org](mailto:info@redmondhistoricalsociety.org), or go online at [redmondhistoricalsociety.org](http://redmondhistoricalsociety.org).

## GENEALOGY WEBINARS

Recently the Computer Interest Group discussed Webinars. Depending on the site the webinars were free, low cost or high cost. Some of the free lectures were training for a particular application but it was apparent that there was a wide selection. There are many webinar sites and here are just a few that could be viewed:

- Legacy by Geoff Rasmussen — Free to attend or view within 10 days & can buy DVDs. Most are basic genealogy topics & a few about Legacy software:  
[www.legacyfamilytree.com](http://www.legacyfamilytree.com)
- Calendar of webinars (GeneaWebinars by DearMyrtle):  
[www.geneawebinars.com](http://www.geneawebinars.com)
- Southern California Genealogical Society — free but must be a member to see archived copies:  
<http://www.scgsgenealogy.com/JamboreeExtensionSeries2012.htm>
- Ancestry.com — free but most of them are about Family Tree Maker software and Ancestry.com but back in 2008 they created some for ethnic groups like Polish, Jewish, Italian, etc:  
<http://www.ancestry.com/cs/us/videos>
- RootsMagic — free but most of them have been about the various software packages they sell:  
[www.RootsMagic.com/Webinars](http://www.RootsMagic.com/Webinars)
- Family Tree University by Family Tree Magazine — a few free but most cost:  
<http://www.familytreeuniversity.com/category/webinars>
- Online Genealogy Education programs:  
<http://professional.bu.edu/programs/genealogy> Boston University  
[www.genealogicalstudies.com](http://www.genealogicalstudies.com) National Institute of Genealogical Studies
- FamilySearch.org — free courses to learn research tips for worldwide research (don't know if these are classified as archived webinars):  
<https://www.familysearch.org/learningcenter/home.html>
- Mid-Continent Public Library (list of their Online Presentations):  
<http://www.mymcpl.org/genealogy/online-presentations>

Thank you to the Computer Interest Group for sharing the above list.

## ONLINE SEARCH TIPS

Would you like to improve your online searching? There is an article available online that details how to get more out of your Google searches. The article, titled *Five New Google Search Tricks*, can be found at  
<http://www.genealogyintime.com/GenealogyResources/Articles/five-new-google-search-tricks-page1.html>

At the same website, there are several other articles concerning online genealogical searches. They are :

A Guide to Performing Online Genealogy Searches [http://www.genealogyintime.com/GenealogyResources/Articles/a\\_guide\\_to\\_performing\\_online\\_genealogy\\_searches\\_page01.html](http://www.genealogyintime.com/GenealogyResources/Articles/a_guide_to_performing_online_genealogy_searches_page01.html)

A Genealogy Guide to 130+ Google Search Engines [http://www.genealogyintime.com/GenealogyResources/Articles/genealogy\\_guide\\_to\\_google\\_country\\_search\\_engines\\_page1.html](http://www.genealogyintime.com/GenealogyResources/Articles/genealogy_guide_to_google_country_search_engines_page1.html)

Ten Innovations in Online Genealogy Search [http://www.genealogyintime.com/GenealogyResources/Articles/ten\\_innovations\\_in\\_online\\_genealogy\\_search\\_part1\\_page1.html](http://www.genealogyintime.com/GenealogyResources/Articles/ten_innovations_in_online_genealogy_search_part1_page1.html) (Submitted by Dorothy Pretare, EGS Publicity).

## REDMOND HISTORICAL SOCIETY UPCOMING MEETING

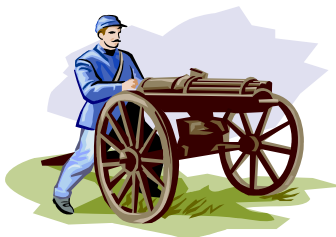
History is happening in the Redmond area and we welcome you to our meeting. The Redmond Historical Society will meet on Saturday, May 12, 2012, 10:30 AM to Noon at The Old Redmond Schoolhouse Community Center, 16600 NE 80 Street, Redmond, WA. Jerry Baker will be talking about the history of Marymoor Velodrome; how it was financed and built in 1974; and how it has evolved. Don't miss this meeting. To receive the monthly newsletter, contact the Society office at 425-885-2919, or email your request to [info@redmondhistoricalsociety.org](mailto:info@redmondhistoricalsociety.org). Books, note cards, free historic walking tour brochures, and the book, "Redmond Reflections," are available in our office, which is open Monday, Wednesday, and Friday from 9:30 AM to 4:30 PM. Visit our website: [redmondhistoricalsociety.org](http://redmondhistoricalsociety.org).

## THE TIDE OF EMIGRATION TO THE UNITED STATES AND THE BRITISH COLONIES — AN HISTORIC PROSPECTIVE

The following link is to an article originally published in the *The Illustrated London News*, July 6, 1850. It gives detailed information about what emigration, and the passage of our ancestors was like in the mid-17th-century. <http://www-adm.pdx.edu/user/frinq/pluralst/tide.htm> (Submitted by Dorothy Pretare, EGS Publicity)

## UNKNOWN NO MORE: IDENTIFYING A CIVIL WAR SOLDIER

NPR has a great story about identifying a previously-unidentified enlisted man in a Civil War uniform. Tom Liljenquist and his family have collected 1,000 of these such photographs and donated them to the Library of Congress. But the photographs don't feature generals and other high-ranking officers. Instead, they're images of the enlisted men who fought for the Union and the Confederacy during the war. And only a handful of the soldiers have been identified.



Mike McAfee at the West Point Museum, part of the U.S. Military Academy, looked at one picture and immediately knew the regiment. A bit more detective work by others and the mystery soldier from the 14th Brooklyn was identified as Thomas A. Ardies.

The techniques used here can be used to identify people in many other photographs, military or not. You can read this interesting story by Ramona Martinez at <http://goo.gl/TpV93>.

(The previous article is from Eastman's Online Genealogy Newsletter and is copyright 2012 by Richard W. Eastman. It is re-published here with the permission of the author. Information about the newsletter is available at <http://www.eogn.com>.)

## REMINDER: YOU CAN WATCH WHO DO YOU THINK YOU ARE? ONLINE

If you missed an episode of *Who Do You Think You Are?* on NBC, don't forget that you can also watch it online on NBC's web site. The programs do not become available on the web site until a few hours after they have been broadcast on television. The episodes will be available online for about six months or so, but not forever.

The online versions can be watched at any time you wish, not at a set time determined by the network. Even better, many of the commercials have been deleted, although not all.

You can learn more about *You Can Watch Who Do You Think You Are?* at <http://www.nbc.com/who-do-you-think-you-are/>. (The previous article is from Eastman's Online Genealogy Newsletter and is copyright 2012 by Richard W. Eastman. It is re-published here with the permission of the author. Information about the newsletter is available at <http://www.eogn.com>.)



## CIVIL WAR PHOTOGRAPHS

Some of the best photographs of the U.S. Civil War can be found on *The Atlantic's* web site at <http://www.theatlantic.com/infocus/2012/02>. Scroll down to see the three sections of photographs.

## CENSUS QUESTIONS THAT LEAD TO MORE ANSWERS

Ancestry.com has a free downloadable guide called *10 Census Questions That Lead to More Answers*. This guide will show you how to get next-step clues from your census research. You can find the guide, in PDF format, at [http://c.mfcreative.com/email/newsletters/amu/2012/0312/March\\_AMU\\_Guide2.pdf?o\\_xid=50552&o\\_lid=50552&o\\_sch=Email](http://c.mfcreative.com/email/newsletters/amu/2012/0312/March_AMU_Guide2.pdf?o_xid=50552&o_lid=50552&o_sch=Email)

## HELP IN FINDING YOUR FEMALE ANCESTORS

Need some ideas to help you find your female ancestor? Here are three free online articles from *Family Tree Magazine* that may give you some clues:

1. Did you realize your female ancestor could go by many different nicknames in the various records she might appear in? *Family Tree Magazine* has a free list of nicknames for more than 200 given names. Looking for your ancestor under all possible names may help you find her. You can see their list at <http://www.familytreemagazine.com/article/Your-Female-Ancestors-Nicknames>
2. If you are trying to date a photograph of a woman based on looking at her clothing, there are three details you can look for to help you. Learn about the details in this article: <http://www.familytreemagazine.com/article/PhotoDetective-Dating-Womens-Clothing>
3. Here is a great list of women's history and genealogy websites, books and organizations for you to check out: <http://www.familytreemagazine.com/article/ResourcesFor-Finding-Female-Ancestors> (Submitted by Kimberly Nichols, *EGS Newsletter*)



## MAN FINDS HIS GERMAN DOUBLE

The (Lake Region & Pike County, Pennsylvania) *News Eagle* has a genealogy-related story that at first seems unremarkable. Richard Krebs of Hawley, Pennsylvania decided to research his family tree. He knew his Krebs ancestors came from Germany so he focused on Ellis Island records. He soon found that his grandfather Theodore Krebs arrived in the United States from Germany in 1893, emigrating from a town called Aschaffenberg.

Krebs found his grandfather's brother remained in Germany and raised a family and they had children also. Soon, Richard Krebs found living relatives in Germany, even one who shares his name: Richard Krebs of Weibersbrunn, a town only a few kilometers from Aschaffenberg.

Then the story gets weird.

It seems that the two cousins are almost exact body doubles. They could easily pass for identical twins.

You can read the full story by Peter Becker at <http://goo.gl/isDRJ> (The previous article is from *Eastman's Online Genealogy Newsletter* and is copyright 2012 by Richard W. Eastman. It is re-published here with the permission of the author. Information about the newsletter is available at <http://www.eogn.com>.)

## FAMILY HISTORY TIP: SIBLINGS' DEATH RECORDS

Be sure to cross-check the death certificates of your ancestor's siblings. My great-grandfather's mother was a mystery. Her first name had been listed as Eleanor, Elender, and Elvira in different census records. There was also a question about her last name. Unfortunately, the death certificate of my great-grandfather was hard to read. I couldn't make out his mother's name with certainty. So I looked for his siblings' death certificates and compared them all to figure it out. Now I search and save death certificates of all siblings. It's also helpful in making sure I have the right brothers and sisters listed. (Cindy Lee, *The Weekly Discovery* Copyright 2012, Ancestry.com)

## WHEN YOU CAN'T FIND THE VITAL RECORD...

Looking for a birth, marriage, or death record but coming up short? Here are some places – and techniques – you can turn to for answers when the usual sources don't pan out.

### Birth Dates

- While it's important to remember that these are not primary sources for birth information, both marriage and death records often include birth dates and places.
- U.S. federal censuses records for the years 1850–1930 include ages for everyone in the household. With a little math, this will help you close in on a birth year. Enumerators used fractions to record ages for people born within the census year (e.g., 1 month = 1/12, 2 months = 2/12, etc.). The 1900 census asked for the month and year of birth, as well as ages.
- Military records will often include birth information for the person who served, and occasionally you'll also find birth details for family members. World War I Draft Records and the World War II "Old Man's Draft" are two good examples of military records that include birth dates.

### Marriage Dates

- Since churches began recording marriages before counties and states did, they are an obvious choice as an alternative to a civil marriage record. Determine what churches were around at the time you think your ancestors married; then search those closest to where your ancestor lived or that shared an ethnic affiliation with your relatives. (You may find reference to church affiliations in death and other records.) Once you have determined what church your ancestor attended, a call to the church may be all it takes to find where the records are located, but if the church no longer exists, it may take a little digging. Many denominations have their own archives, while records for others may be held at a local or state historical society. And don't overlook the possibility that a local group has made the records available online. Plugging the church name into a search engine could bring you an unexpected surprise. Don't forget to search collections like the new *Pennsylvania, Church and Town Records, 1708–1985*, which include records from many Pennsylvania congregations.



- Local newspapers may have run notices of your ancestor's engagement or marriage. Look for tidbits in social columns, as well as in sections that regularly listed marriage announcements and engagements. You can search historical newspapers on [Ancestry.com](http://Ancestry.com). Also look for notices of anniversaries, especially memorable ones like 25th and 50th, in local newspapers. You may find details about the original marriage, including the date and names of witnesses, or a guest list of anniversary party attendees that will likely include other family members.

- When marriage records can't be found, estimate the marriage date based on the age of the first child (subtract a year, just to be safe). As with any estimation you include in your research, be sure to note it as such. And bear in mind that there are a number of factors capable of throwing this estimate off.

### Death Records

- *New York, Death Newspaper Extracts, 1801–1890* (Barber Collection), is just one example of a collection that can be invaluable for finding information about New Yorkers, people who died in New York while visiting, or even individuals who did not live in New York but whose relatives did.

- An obvious alternative to a death certificate can be found at the cemetery, whether on a tombstone or in the records of the cemetery sexton. Millions of cemetery records have been transcribed and indexed by genealogical societies. [Find-a-Grave.com](http://Find-a-Grave.com) includes photographs of several million graves with death and other information.

- If your ancestor lived in a city, city directories can be especially useful. When someone who has been listed in a directory for several consecutive years suddenly disappears, it might be that he or she has passed away. When a man died, his wife may be listed in subsequent years as "widow" or "widow of..." [Ancestry.com](http://Ancestry.com) has directories for many cities and years. (*From Ancestry.com Monthly Update, February 2012*)



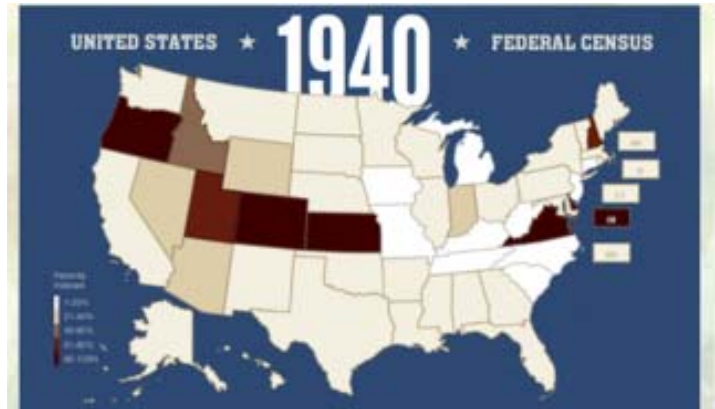
**HOW MANY 1940 CENSUS RECORDS HAVE BEEN INDEXED?**

Most genealogists know that the 1940 U.S. census images have been released and are now available to everyone. However, these are images only. The indexes will be added "real soon now." Several organizations, including FamilySearch, are busy with indexing efforts.

Of course, the real question is: "When will the state I am interested in be finished?" Nobody can tell you the exact date but you can obtain a status report of the efforts at [FamilySearch.org](http://FamilySearch.org).

Go to <https://www.familysearch.org/1940census/> and move your mouse over the state that you are interested in. A pop-up will appear showing you the percentage of records that have been indexed so far by FamilySearch.

Some states show zero per cent. One state, Kansas, shows 98%!



*(The previous article is from Eastman’s Online Genealogy Newsletter and is copyright 2012 by Richard W. Eastman. It is re-published here with the permission of the author. Information about the newsletter is available at <http://www.eogn.com>.)*

**THE BEST PERSONAL CLOUD STORAGE CHOICES FOR YOUR FILES**

For data safety and for optionally sharing your files amongst your own computers or even with other people, cloud-based online storage services are tough to beat. Some of the services offer limited amounts of free storage space. Even the paid services are usually cheaper than buying hard drives. However, there are many such services to choose from. Which one is best for you?

I doubt if there is any single answer that is best for all. However, Steven J. Vaughan-Nichols has compared the six leading online storage services and gives his evaluation in an article in ZDnet. You can read his evaluation at <http://goo.gl/m9tRF>. *(The previous article is from Eastman’s Online Genealogy Newsletter and is copyright 2012 by Richard W. Eastman. It is re-published here with the permission of the author. Information about the newsletter is available at <http://www.eogn.com>.)*

**LOCATION ADDRESSES**

Bellevue Regional Library NE 12th St. and 110th Ave. NE Bellevue, WA 425-450-1760	Crossroads Mall Shopping Center Community Meeting Room NE 8th and 156th Ave NE, Bellevue, WA	FHC - Bellevue 10675 NE 20th St Bellevue, WA 425-454-2690	FHC - Kirkland 7910 NE 132nd St. Kirkland, WA 425-821-8781
Issaquah Public Library 140 East Sunset Way Issaquah, WA 425-392-5430	Lake Hills Library 15590 Lake Hills Blvd. SE Bellevue, WA 425-747-3350	National Archives and Records Admin. 6125 Sand Point Way NE Seattle, WA 98115-7999 206-336-5115	Fiske Genealogical Library 1644 43rd Ave E/ Seattle, WA 98122 206-328-2716
FHC - Redmond 10115 172nd Ave. NE Redmond, WA 425-861-9273	Newport Way Library 14520 SE Newport Way Bellevue WA 425-747-2390	North Bend Library 115 East Fourth St North Bend, WA 425-888-0554	Redmond Regional Library 15990 NE 85th St Redmond, WA 425-885-1861
WA State Puget Sound Regional Archives BCC, 3000 Landerholm SE, MS-100 Bellevue, WA 98007	Seattle Public Library 1000 Fourth Ave Seattle, WA 206-386-4636	Snoqualmie Public Library 38580 SE River Street Snoqualmie, WA 425-888-1223	Fire Station #22 6602 108th Ave NE Kirkland, WA

## EGS MARCH AND APRIL 2012 MEETING CALENDAR

EGS Board Meeting (First Thursday, 10:00 AM)	The Eastside Genealogical Society Board will meet on <b>Thursday, May 3 and Thursday, June 7, 10:00 AM to Noon</b> at the <b>Redmond Library</b> . <b>NOTE Change of Location.</b>
EGS General Meeting	The Eastside Genealogical Society will meet on <b>Thursday, May 10 and Thursday, June 14, at 7:00 PM in the Redmond Library</b> . Visitors are welcome. <b>NOTE Change of Location.</b>
Computer Interest (Fourth Saturday, 9:30 AM)	The EGS Computer SIG holds meetings on the fourth Saturday of the month, except December. The next meetings will be on <b>May 26 and June 23</b> . We meet at <b>9:30 AM in the Community Room at Crossroads Shopping Center in Bellevue</b> . Meetings lasts for two hours and we usually have a speaker or leader discussing a specific topic. There is time for questions and discussion. After the meeting, most people have lunch. There is a choice of food from a large number of vendors. If you wish to receive e-mail notification of the SIG meetings please send a request to <a href="mailto:egscomputersig@gmail.com">egscomputersig@gmail.com</a> (Joe Flint, <a href="mailto:egscomputersig@gmail.com">egscomputersig@gmail.com</a> )
Czech/Slovak Interest Group (Check Bulletin for meeting information)	The Czech Slovak Interest group <b>does not meet in May</b> . On <b>June 2nd</b> we have a special meeting from <b>1:30 to 4:30 PM</b> at Fire Station #22 in Kirkland. We will be viewing a film called "The Accidental Army Documentary, the Story of the Czech and Slovak Legions" before World War I. See website for more information: <a href="http://www.rootsweb.ancestry.com/~wacsig/">www.rootsweb.ancestry.com/~wacsig/</a> (Rosie Bodien, 425-828-0170 or <a href="mailto:rosie@bodien.org">rosie@bodien.org</a> .)
EGS Lunch Bunch (Fourth Thursday, 11:30 AM)	Meets every fourth <b>Thursday, 11:30 AM, at Crossroads Mall Shopping Center Food Court.</b>
German Interest Group (First Friday, 1:00 PM)	The German Interest Group will meet from <b>1:00 to 3:00 PM</b> at the <b>LDS Church at 10675 NE 20th St, Bellevue</b> . Visitors are always welcome. <b>May 4 , 2012:</b> "Using <a href="http://Familysearch.org">Familysearch.org</a> and <a href="http://new.familysearch.org">new.familysearch.org</a> " <b>June 1, 2012:</b> topic to be determined. NO MEETINGS JULY & AUGUST. (Ann Passe, <a href="mailto:annp42@comcast.net">annp42@comcast.net</a> or 206-232-1104)
Irish and Scots-Irish Interest Group (First Wednesday, 12:30 PM)	The Irish Interest Group will meet <b>May 2 and June 6</b> in our meeting location at the <b>LDS Church</b> (host of Bellevue Family History Center) at <b>10675 NE 20th St, Bellevue</b> . <b>The time has been changed to 12:30 to 2:30 PM</b> . Our topic for May will be "Our favorite subscription websites for Irish research." For information call Ann Lamb, (425) 557-0440. (Ann Lamb, 425-557-0440 or <a href="mailto:AnnL7777@aol.com">AnnL7777@aol.com</a> )
Italian Interest Group (Third Saturday, 1:30 PM)	The Italian Interest Group meets on <b>May 19 and June 16</b> at the <b>LDS Church, 10675 NE 20th St, Bellevue, from 1:30 to 3:30 PM</b> . Please contact Mary for meeting information. (Mary Sangalang, 425-649-2250 or <a href="mailto:collectingroots@msn.com">collectingroots@msn.com</a> )
Legacy Interest Group (First Wednesday, 10:00 AM)	The Legacy Special Interest Group will meet on <b>Wednesday, May 2 and again on Wednesday, June 6</b> , at the <b>LDS Church</b> (host of Bellevue Family History Center) at <b>10675 NE 20th St, Bellevue, from 10:00 AM to 12:00 PM</b> . <b>Topics are: May 2 – To-Do Lists and June 6 – Transferring Family File between PC and laptop</b> . For information call Sherry Holthe 425-880-4407. (Sherry Holthe, <a href="mailto:sherdh@centurytel.net">sherdh@centurytel.net</a> or 425-880-4407)
Scandinavian Interest Group (Second Tuesday, 10:00 AM)	The Scandinavian Group will meet on <b>May 8 and June 12 from 10:00 AM to Noon</b> at the <b>Archive Building on the Bellevue College Campus</b> . Please check our new website at <a href="http://scandinaviansig.wordpress.com">http://scandinaviansig.wordpress.com</a> Contact Sandy for meeting information.(Sandy Arildson, 425-747-5621, or <a href="mailto:sarildson@yahoo.com">sarildson@yahoo.com</a> )
Shore to Shore Interest Group	Please contact Dave & Betty Bennett at <a href="mailto:daveandbetty@comcast.net">daveandbetty@comcast.net</a> for information.

## EASTSIDE GENEALOGICAL SOCIETY CONTACTS

President*	Judy Meredith	425-702-9321	<a href="mailto:ja.meredith65@comcast.net">ja.meredith65@comcast.net</a>
Vice President*	Carol Pattison	425-228-2510	<a href="mailto:maycreek@aol.com">maycreek@aol.com</a>
Secretary*	Walta McCarley	425-376-0539	<a href="mailto:wmccarley@yahoo.com">wmccarley@yahoo.com</a>
Treasurer*	Kay Wilson	425-746-4366	<a href="mailto:kayjwilson@comcast.net">kayjwilson@comcast.net</a>
Trustee*	Sharron Filer	425-885-7213	<a href="mailto:n.sfiler@frontier.com">n.sfiler@frontier.com</a>
Past President*	Bob Barnes	425-747-4863	<a href="mailto:rstithbarnes@hotmail.com">rstithbarnes@hotmail.com</a>
Education Chair*	Bob Barnes	425-747-4863	<a href="mailto:rstithbarnes@hotmail.com">rstithbarnes@hotmail.com</a>
Archivist/Historian*	Walta McCarley	425-746-7557	<a href="mailto:wmccarley@yahoo.com">wmccarley@yahoo.com</a>
Library Chair*	Winifred Sihon	425-793-5424	<a href="mailto:wsihon@comcast.net">wsihon@comcast.net</a>
Library Volunteers	Winifred Sihon	425-793-5424	<a href="mailto:wsihon@comcast.net">wsihon@comcast.net</a>
Book Acquisitions*	Sarah Fleming	425-957-1134	<a href="mailto:sarahrosefleming@earthlink.net">sarahrosefleming@earthlink.net</a>
Membership Chair*	Dorothy Mehrer	425-822-7316	<a href="mailto:dmehrer@netscape.com">dmehrer@netscape.com</a>
Newsletter Editor*	Kim Nichols	360-668-3937	<a href="mailto:kimberly@dormik.com">kimberly@dormik.com</a>
Newsletter Contributors	Mickey Main	425-747-2038	<a href="mailto:mickeymain@comcast.net">mickeymain@comcast.net</a>
	Sharron Filer	425-885-7213	<a href="mailto:n.sfiler@frontier.com">n.sfiler@frontier.com</a>
Newsletter Mailing	Jack and Jean Newman	425-746-2324	<a href="mailto:jnewman495@q.com">jnewman495@q.com</a>
Nominating Chair*	Bob Barnes	425-747-4863	<a href="mailto:rstithbarnes@hotmail.com">rstithbarnes@hotmail.com</a>
	Norb Ziegler	425-557-2108	<a href="mailto:zieglerwa@sprintmail.com">zieglerwa@sprintmail.com</a>
	Marty Gale	206-232-6471	<a href="mailto:martygale@futuretense.net">martygale@futuretense.net</a>
Program Chair*	Carol Pattison	425-228-2510	<a href="mailto:maycreek@aol.com">maycreek@aol.com</a>
Publicity*	Dorothy Pretare	425-277-0831	<a href="mailto:dpngen@comcast.net">dpngen@comcast.net</a>
Representatives:			
DAR	Donna Hart	425-831-5978	<a href="mailto:carldonna1@comcast.net">carldonna1@comcast.net</a>
Bellevue Reg Library			
FGS	Judy Meredith	425-702-9321	<a href="mailto:ja.meredith65@comcast.net">ja.meredith65@comcast.net</a>
SIG Representative*			
Sunshine Chair*	Patti Wehrs	787-599-2746	<a href="mailto:pwehrs@msn.com">pwehrs@msn.com</a>
Webmaster*	Kim Nichols	360-668-3937	<a href="mailto:kimberly@dormik.com">kimberly@dormik.com</a>

\* EGS Board Member

### **Special Interest Group (SIG) Contacts**

Computer	Joe Flint		<a href="mailto:egscomputersig@gmail.com">egscomputersig@gmail.com</a>
Czech/Slovak	Rosie Bodien	425-828-0170	<a href="mailto:rosie@bodien.org">rosie@bodien.org</a>
German	Ann Passe	206-232-1104	<a href="mailto:annp42@comcast.net">annp42@comcast.net</a>
Irish & Scots-Irish	Ann Lamb	425-557-0440	<a href="mailto:AnnL7777@aol.com">AnnL7777@aol.com</a>
Italian	Mary D. Sangalang	425-649-2250	<a href="mailto:collectingroots@msn.com">collectingroots@msn.com</a>
Legacy	Sherry Holthe	425-880-4407	<a href="mailto:sherdh@centurytel.net">sherdh@centurytel.net</a>
Lunch Bunch			
Portuguese(inactive)	Barbara Guyll	425-746-5603	<a href="mailto:barbaraguyll@comcast.net">barbaraguyll@comcast.net</a>
Scandinavian	Sandy Arildson	425-747-5621	<a href="mailto:sarildson@yahoo.com">sarildson@yahoo.com</a>
Shore to Shore	Shirley Dowd	425-454-0078	



Eastside Genealogical Society  
 P.O. Box 374  
 Bellevue, WA 98009-0374

DATED MATERIAL  
 PLEASE DO NOT HOLD

## THE EASTSIDE GENEALOGICAL SOCIETY

### PURPOSE:

The EGS provides members a forum for learning and the exchange of information related to genealogy. The Society obtains and provides resources for use by members, encourages genealogical research and education, and provides community outreach through programs, classes, seminars and library volunteers.

### MEETINGS:

EGS monthly meetings are held on the second Thursday of each month (except December) at 7:00 P.M. at the Redmond Library, 15990 NE 85th St, Redmond, WA. A get acquainted and ask questions session is open at 6:30 P.M.

### MEMBERSHIP:

Membership dues are: Individual—\$17, Couple—\$22, Senior—\$15, Senior Couple, \$19, Lifetime—15 times annual membership. Membership includes online newsletter. To receive printed newsletter, add \$6 to dues amount. To join the society, send your check with your name, phone number, address (nine digit zip please) and e-mail address (if applicable) to the address at the bottom of this page. Please mark "Membership" on your envelope.

### NEWSLETTER SCHEDULE:

The *Bulletin Board* is published January, March, May, July, September, and November. Submission of news and articles to the *Bulletin Board* must be in writing and received **by the 15th of the month** for inclusion in the following month's newsletter. If you are unable to meet the deadline, please call Kim Nichols at 360-668-3937 to make special arrangements. Please mail submissions to: Kim Nichols, 12422 219th Place SE, Snohomish, WA 98296 or e-mail to: [kimberly@dormik.com](mailto:kimberly@dormik.com). **Note:** The EGS Board and the *Bulletin Board* reserve the right to limit and prioritize event announcements, space permitting, to non-profit organization items of genealogical interest. Neither the EGS nor the editors of the *Bulletin Board* accept responsibility for errors of fact or judgment in the material submitted to and printed in the *Bulletin Board*. If errors are brought to our attention, we will try to correct them.

The *Bulletin Board* is a publication of:

The Eastside Genealogical Society  
 P.O. Box 374  
 Bellevue, WA 98009-0374