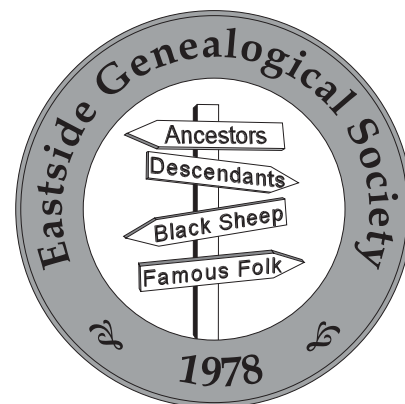


EASTSIDE GENEALOGICAL SOCIETY

BULLETIN BOARD



EGS MEETING INFORMATION

Date: Thursday, April 8, 2010
Time: Welcome New Members 6:30 PM
 Meeting Begins 7:00 PM
Location: Bellevue Regional Library
Topic: *Using Maps in Genealogical Research*
Speaker: Bob Barnes and Ed Schultz

About The Program:

Using Maps in Genealogical Research will be presented by Bob Barnes, ably assisted by Ed Schultz. Using maps helps us get the “big picture”: where our ancestors lived, routes they may have used to travel to other areas, where their land was located in relation to other family members and in-laws, the locations of battles they may have participated in, how county boundaries have changed and much more. Come and learn from two experienced researchers!

PRESIDENT’S MESSAGE

Our May general election is rapidly approaching, and Norb Ziegler, past president and chair of the nominating committee will be contacting some of you about possibly serving as a Society officer or committee chair or even a committee member, all of which positions outnumber known candidates by a large margin. Norb or myself or any of the other officers and committee chairs would be delighted to answer any questions that prospective candidates might have regarding open positions. On behalf of the board I would like to extend an invitation to any member or members who might be interested in serving on a committee, or might be interested in serving as a committee chair or officer of the Society and who would like to attend one of our board meetings to see what goes on and what it is all about. All that I ask is that you contact either myself or Judy Meredith, vice-president, so that we know to expect you and so that we have enough chairs, bearing in mind that we meet in Room 6 on the second floor of the Bellevue Regional Library from 10 to noon on the first Thursday of the month.

In my introductory remarks at the March meeting I noted that the Society’s mail box has been stuffed with seminar announcements for the past month, more than a few of which might be of interest to EGS members:

- ◆ 4/10 — The Genealogical Society of South Whidbey Island is hosting a special Spring seminar featuring Dr. Stephen Morse, who will speak on genealogical search tools, one-step webpages, DNA and phonetic matching.
- ◆ 4/17 — The Olympia Genealogical Society will be hosting an all day seminar featuring Dr. John Colletta, author of “They Came in Ships”, who will be speaking on researching Passenger Arrival Records from Colonial time to the mid-20th Century, Federal Naturalization Records, lesser used (*continued next page*)

APRIL 2010
 VOLUME XXVIII, NUMBER 10

The Eastside Genealogical
 Society

P.O. Box 374
 Bellevue WA 98009-0374
www.rootsweb.ancestry.com/~wakcegs/

NEXT MONTH’S EGS MEETING:

Next Meeting:
 Thursday, May 13, 2010
 Bellevue Regional Library

INSIDE THIS ISSUE:

President’s Message	1
EGS February Board Meeting Minutes	3
Announcements	4
Genealogy & Family History Books for Children & Teens	5
<i>One More Brick Wall Crumbles</i> by Bob Barnes	5
<i>Who Do You Think You Are?</i> - The Book	6
Upcoming Events & Seminars	7
SIG Calendar	9
EGS Contacts	11

Federal Records and “Discovering the REAL stories of your immigrant ancestors.”

- ◆ 4/28-5/1 — The NGS Family History Conference in Salt Lake City.
- ◆ 5/22 — Seattle Genealogical Society Spring Seminar

And I am sure that there will be more in the mail box next week!

And then there are our own Society activities starting with a booth at the Issaquah Volunteer Fair and Expo on Saturday, April 24th, from 9-2. A thank you to Judy, Norb, Ed and Virgil for already signing up to help. Any other volunteers please give Judy Meredith (425-702-9321) or myself (425-747-4863) a call.

We also will be starting a series of Introductory Genealogy Classes at the BRL later this Spring or Summer so look for announcements in the Newsletter, and if you are interested in helping, please let us know.

Now on to one of my pet peeves, slipshod genealogical research. Not so very long ago, as I was surfing the Internet checking out genealogical leads on some of my family names, I came across one website whose author proudly proclaimed that her family tree contained over several tens of thousands of names of Forgy and related families. Given that I am descended from a Forgy clan, and also given that it is not an especially common name, I thought that it would be interesting to view a website that would apparently include a very substantial percentage of the known individuals of this or related families. My euphoria lasted almost as long as it took me to read the disclaimer at the top of the first page wherein the author confessed that she was sure that among her ten's of thousands of names that there was a high likelihood that there were some who were listed to whom she was not at all related!



I reflected that it would have really been nice if she had gone a step or two farther to vet her supposed family connections and expunge those to whom she, and likely a number of others on her family tree, were not related. By way of comparison I think that I have about 800 names on my family tree and my surnames include Barnes, Lewis, Johnson and Smith to name a few of the more common ones. Of course I have only been researching my antecedents for about twenty years, and I would like to think that each name has had to pass a reasonably rigorous muster to make the grade. Yes, my process does slow down the rate of growth of my family tree to a bonsai-like level but at least I feel that I know each of them in some way and I believe that I am, in fact, related to them, straying factors aside.

So just how does one vet a potentially large list of candidate antecedents? The first step is to quarantine the lot of them. Do not add them to your family tree en masse as I suspect the Forgy researcher I mentioned above probably did. If you want, import them into a separate family tree and keep them there, yes, quarantined. Add them to your family tree only as you are able to document their bona fides. Do not assume that just because one researcher (or a host of copycats) wants to include them that that necessarily makes it so.

I recently had a chance to put my vetting process into action. As I shared with you in this newsletter last month, I was fortunate to crack one of my brick walls with the discovery of my g4grandfather James McGinnis parentage. The ticket into my family tree was punched by the contents of an 1825 letter from his sister to another brother (the ancestor of my newly found fifth cousin) that gave a complete rundown of the family in 1825, and the fact that James had died in Cincinnati about six years earlier (which I already knew). This, coupled with a family group sheet from a totally independent source based on family records that stated James was the son of Lt. John McGinnis of Cumberland County, PA, provided two independent sources necessary for provenance. Now I am working to get the source information from yet another researcher linking James to a possible grandfather, Samuel Johnson, of Ireland. Until then, I am afraid Samuel will be on the outside looking in!

Happy hunting, Bob

EGS BOARD MEETING MINUTES SUMMARY - FEBRUARY 5, 2010

PRESENT: Bob Barnes, President; Judy Meredith, Vice-President; Walta McCarley, Secretary; Ed Schultz, Treasurer; Sharron Filer, Trustee; Dorothy Mehrer, Membership; Dorothy Pretare, Publicity

DISCUSSION:

January minutes were corrected to add that Bob Barnes is still working on locating the Lucille McDonald manuscript.

Committee chairs need committee members to assist them. This will be encouraged at the March meeting with sign-up sheets.

New membership flyers are finished and available.

New membership packet. Board members are to mark up copy and let Judy or Ed know by the general meeting next week of any changes, corrections, etc.

Bylaw change – Library Committee will be divided into Library Research and Library Media/Acquisitions. Any change will need to be presented for membership approval.

REPORTS:

Elections – President and Secretary positions will be voted on in May. Election of a Vice-President will be held the following month if Judy is elected President. The nominating committee is trying hard to get nominations from the membership at the meeting.

Membership – Dorothy M. advised that we now have 251 memberships with 257 individuals, 3 new memberships in January.

Outreach – We will participate in the Issaquah Hobby and Volunteer Expo, April 24th at the Pickering Barn. Bob will see what he can find on Issaquah historical city directories for use at our booth.

Programs – February meeting – Ed will explore various genealogical websites. Mary Sangalang will speak on her research trip to Italy in March. Programs to attract more people are needed.

Publicity – Dorothy P. is unable to do the March news releases. She definitely needs an assistant.

SIGs – No representative as yet. Several members said the SIGs are doing well and have good attendance.

Treasurer – Ed stated that a decline in membership led to a deficit in January. An action item from last month was to cut back the printed bulletins by 20. It wasn't done but will be with the next edition. Library copies are being used, there are no extras to cut back on.

(A complete copy of the minutes can be made available upon request.)

FREE GENEALOGICAL RESEARCH HELP

Genealogical research help is available at the Bellevue Regional Library, located at NE 12th St. and 110th Ave. NE in Bellevue. Eastside Genealogical Society volunteers are waiting to help you with problems and questions. They are available in room 6 on the second floor of the library, to the left of the reference desk. Hours are Tuesdays from 7:00-9:00 PM and Wednesdays from 1:00-3:00 PM.

WELCOME NEW MEMBERS

Please welcome the following new members:

- ◆ Joe FLINT is interested in computers and researching FLINT, BLAKE, COLLINS, and FISHER.
- ◆ Sharon and Dean READ are researching LEE, MAHAN, TOOLEY, COLE, RUTLEDGE, THELEMANN, READ, and HAZELHURST.

2010 CENSUS COMING SOON!

In March the 2010 Census forms were mailed to 130 million addresses across the nation. This includes people of all ages, races, ethnic groups, citizens and noncitizens. By completing and returning your census form, you help guide funding decisions for our public safety services, schools, hospitals and child-care centers, as well as affect our voice in Congress. The data collected are used to determine voting districts for all levels of city, state and nationally elected offices including reapportioning of the U.S. House of Representatives. Census data directly affect how more than \$400 billion per year in federal funding is distributed to communities nationwide.



This year the census form has only ten questions and takes only about ten minutes to complete. Households are asked to provide key demographic information, including: whether a housing unit is rented or owned; the address of the residence; and the names, genders, ages and races of others living in the household. By law, the Census Bureau cannot share an individual's responses with anyone, including other federal agencies and law enforcement entities. **YOUR ANSWERS ARE SAFE AND CONFIDENTIAL.**

Please complete and mail back your form and encourage your family, friends and neighbors to do the same. For more information: www.2010census.gov (Submitted by Melinda Bronsdon, Recruiting Assistant, Bellevue Local Census Office)

BELLEVUE REGIONAL LIBRARY GENEALOGY COLLECTION HAS MOVED

The genealogy collection housed at the Bellevue Regional Library has been moved to the Room 6 hallway, located on the second floor of the library. The move is pending final approval from the administration, but there are no anticipated issues. Signs have been posted at the old location to direct patrons to the new area. The file cabinets have not been moved yet; there are several options for locating them, and the decision will be made in conjunction with the situation of the new Northwest collection. (Submitted by Lisa Fraser, Adult Services Librarian, Bellevue Library, King County Library System)



VOLUNTEER OPPORTUNITIES

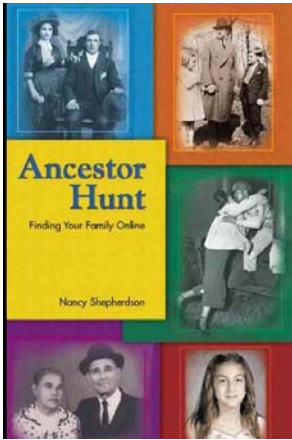


Could you donate a few hours a week (or a month) to the Eastside Genealogy Society to help keep our operation running smoothly? EGS is only as strong as our volunteers. None of these jobs are full-time, serious commitment-type jobs.

- **Research Assistants**— We need an additional volunteer to help researchers at our afternoon or evening help sessions at the library. And Winnie could use an assistant Library Chair.
- **Education Chair**—To coordinate classes and educational opportunities.

If you can help, please contact Bob Barnes at 425-747-4863 or rstithbarnes@hotmail.com.

GENEALOGY AND FAMILY HISTORY BOOKS FOR CHILDREN AND TEENS



Ancestor Hunt: Finding Your Family Online

Nancy Shepherdson

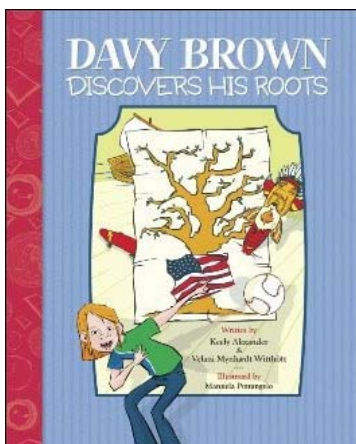
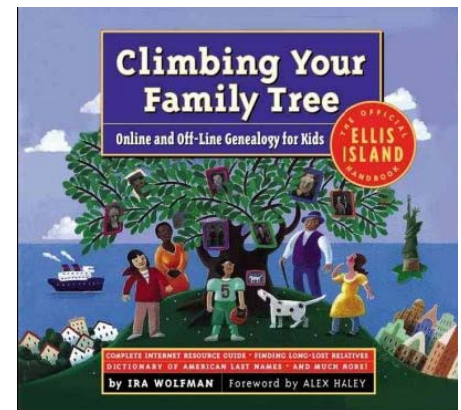
Oriented to teens, this guide focuses on using online sources to trace ancestry. Includes real-world examples of people who have successfully searched for family history information. Recommendations for further reading, helpful organizations, software, and other resources round out the content.

Climbing Your Family Tree: Online and Offline Genealogy for Kids

Ira Wolfman

foreword by Cyndi Howells ; introduction by Alex Haley ; illustrations by Tim Robinson

Slip into the roles of sleuth, geographer, researcher, writer, pen pal, and puzzle solver, and embark on a journey through your family heritage. Explains how to track down ships' manifests, naturalization records, birth and marriage certificates; how to decipher old-fashioned handwriting; how to assemble a scrapbook, and more. Includes information for special situations, such as adoptees, nontraditional families, and recent immigrants.



Davy Brown Discovers His Roots

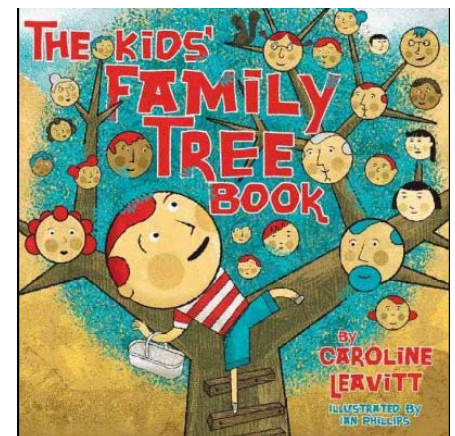
Keely Alexander and Velani Mynhardt Witthoft

Join Davy and his friends Carlos, Erika, and Amit on their quest as they discover that even the most seemingly typical people have exciting immigration histories. Then, using the resources in this book, embark on your own voyage of discovery—what fascinating immigration stories will you unearth? How many flags adorn your family tree? The answers may surprise and delight you!

Kids' Family Tree Book

Caroline Leavitt; illustrated by Ian Phillips.

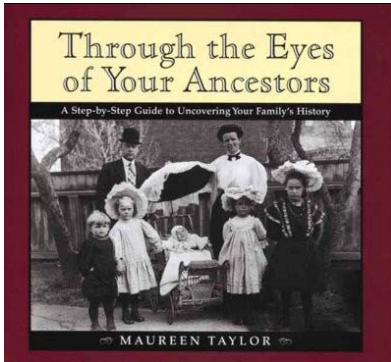
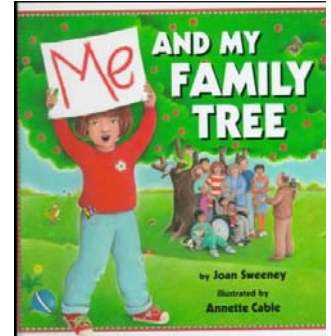
Who are Your Ancestors? Who do you take after? We are all curious about the similarities and differences we share with family members. The more we learn about our relatives, the more we learn about ourselves. Uncovering stories and facts about who all these people were and what they were like is exciting, because it can help you find your family's place in the world. The Kids' Family Tree Book will show you how to trace and organize that history using fun research ideas and great creative projects.



Me and My Family Tree

Joan Sweeney; illustrated by Annette Cable.

This is a fun, easy introduction to genealogy for young children. As in her previous books, Sweeney demystifies an abstract concept by presenting it from a child's point of view. A young girl uses simple language, drawings, and diagrams to explain how the members of her family are related to each other and to her. Cable's clear, colorful, detailed artwork helps make the parts of a family--from siblings to grandparents to cousins--understandable to very young readers. Kids can make sense of their own family connections by filling in the blank family tree at the end of the book.



Through the Eyes of Your Ancestors

Maureen A. Taylor

Here is an easy-to-follow approach to the fascinating hobby of genealogy. Every family has a story, and this book can help teens uncover the secrets and adventures of their own ancestors. From sample interview questions to state-of-the-art computer programs to Web sites, this guide will help young adults become family historians. All varieties of families are represented here - extended, adoptive, and blended, from many races and cultures - with emphasis on the unique role that each has played in the founding and development of the U.S.

U.S. VERSION OF *WHO DO YOU THINK YOU ARE?*— THE BOOK

The producers of the American version of *Who Do You Think You Are?* have produced a companion book, written by Megan Smolenyak, a well-known author, lecturer, and frequent TV guest. She also serves as Chief Genealogical Consultant to the television series. The book is subtitled *The Essential Guide to Tracing Your Family History, a Companion to the NBC Series*. The book was recently released.

I've known Megan Smolenyak for several years and I respect her work. I expected this book to be an excellent how-to-get-started-and-do-it-the-right-way tutorial. I wasn't disappointed. As soon as I opened the book and looked at the Table of Contents, I saw that Megan was aiming squarely at the intended audience. The chapters include: Preparing For Your Ancestor Hunt, Webbing It: What's Online? Learning to Love a Census, Vitaly Important: Births, Marriages, and Deaths, Marching Orders: Did Your Ancestors Serve? Crossing the Pond: Old Country Roots, The Best of the Rest, Sleuthing in Action, and Pass It On. The book also has an Appendix that provides references to many more interview guides, online genealogy services, and source citation help.

Indeed, this is a beginner's guide to genealogy, not a picture book of scenes extracted from the television show. There is a section printed on glossy paper in the center of the book that provides information about each personality featured in the show's episodes and describes the genealogy searches performed by or on behalf of each personality. However, the other 95% of the book barely mentions the television program. This is an excellent "how to get started in genealogy" book that stands on its own, with or without the television program.

Perhaps the toughest thing to describe about this book is the writing style: Megan writes as if this book is for the beginning genealogist. She doesn't use buzzwords and jargon used by the experienced family tree searchers, not even in the section about online resources. There is no assumption that the reader already knows about ahnentafels and Register Reports. Anyone should be able to pick up this book and understand every bit of it. If you have been researching your family tree for a while, you might consider this book to be a bit elementary. Indeed, it is and that is on purpose. Megan Smolenyak wrote an excellent how-to-get-started-and-do-it-the-right-way tutorial and I will suggest that she did it well. If you need a gift for a family member or a friend that might be interested in researching their own family tree, I'd strongly suggest you give them *Who Do You Think You Are?* by Megan Smolenyak. (The previous article is from *Eastman's Online Genealogy Newsletter* and is copyright by Richard W. Eastman. It is re-published here with the permission of the author. Information about the newsletter is available at <http://www.eogn.com>.)

UPCOMING SPRING EVENTS

Seattle Genealogical Society Presents National Speaker — Nationally known genealogist **Elissa Scalise Powell** of Pennsylvania will share her expertise with local family historians at a seminar set for **Saturday, May 22**, at the Swedish Cultural Center, 1920 Dexter Ave. N, in Seattle, Washington. The event, sponsored by the Seattle Genealogical Society, will run from **9:00 AM to 4:00 PM**. The program, designed to benefit beginning as well as advanced researchers, will offer help on finding women ancestors in government records, organizing and updating family information, and tracing Pennsylvania migration routes. Seminar details are posted on www.rootsweb.ancestry.com/~waseags. Those who wish to attend may obtain registration forms by calling the Society at 206-522-8658 or sending an e-mail to sgsseminar@gmail.com.

Black Diamond Historical Society — Special guest speaker, Gwynneth Anderson, a Bellevue photographer and writer, will present “Stones and Bones: Discovering Secrets in King County’s Oldest Cemeteries” on **Sunday, April 25** at The Black Diamond Depot Museum, 32627 Railroad Avenue, Black Diamond, Washington, 98010 during the Society’s General Membership Meeting beginning at **1:00 PM**. Anderson will talk about local cemeteries and how people can learn about local history and culture by looking at the stones, symbols and carvings found in the cemeteries. Anderson will present photos during the presentation and will answer questions following her talk. The program is open to the public and admission is free, however donations are gratefully appreciated and accepted. For more information, call the Society at 360-886-2142 or visit the website www.blackdiamondmuseum.org.

The Redmond Historical Society will meet on **Saturday, April 10, 10:30 AM to noon**, at The Old Redmond Schoolhouse Community Center Auditorium, 16600 NE 80 Street, Redmond, WA. **Clay Heilman**, Nature Vision naturalist, will talk about the new natural and cultural history programs being developed from Juel Park in Redmond. She will give an overview of programs happening now and those being developed for K-12 students in our community. Don’t miss this meeting. To receive the monthly newsletter, contact the Society office at 425-885-2919, or email your request to info@redmondhistoricalsociety.org. Books, note cards, free historic walking tour brochures, and the book, “Redmond Reflections,” are available in our office, which is open on Monday, Wednesday and Thursday from 9:30 AM to 4:30 PM and by appointment. Visit our website: www.redmondhistoricalsociety.org

Old Redmond Historic Walking Tour — If you live in Redmond, you probably drive along Leary Way daily. But do you know the histories of our oldest buildings? Like, which one was both an undertaker’s premises and a bordello? **Tom Hitzroth** will educate and entertain folks with walking tours that explore those histories. This year’s dates are **April 18, May 16, June 20, and September 19**. Tours run from **1:00 to 2:30 PM**, and walkers meet on the front steps of the Justice White House, 7730 Leary Way. A tour will not be held if it rains. An \$8 fee helps fund Society research. Pre-registration is required. To register, phone or email the Redmond Historical Society office at 425-885-2919 or info@redmondhistoricalsociety.org

The Genealogical Society of South Whidbey Island presents a Spring Seminar with **Stephen Morse, Ph.D.** on Saturday, **April 10, 8:00 AM to 4:30 PM**, Useless Bay Country Club, 5725 South Country Club Drive, Langley, WA. Dr. Morse is the creator of the “One Step Search Method” which has unlocked information for thousands of genealogists in many databases on numerous websites. Dr. Morse will be speaking about how to get the best results using his one-step search forms. We’re certain Dr. Morse will open new doors for you – even to databases you’ve been using for years. For more information and registration, see www.rootsweb.ancestry.com/~wagsswi/seminar.html

Olympia Genealogical Society 2010 Spring Seminar Welcome to America! with **John Philip Colletta, Ph.D.**, **Saturday, April 17, 8:30 AM to 4:00 PM**, Washington Farm Bureau Building, 975 Carpenter Road NE, Lacey, WA. John Philip Colletta is one of America’s most popular genealogical lecturers. Entertaining, knowledgeable and experienced, he is based in Washington, D.C., where for 20 years he conducted workshops for the National Archives and taught courses for the Smithsonian Institution. His publications include two manuals — *They Came in Ships: A Guide to Finding Your Immigrant Ancestor’s Arrival Record* and *Finding Italian Roots: The Complete Guide for Americans* — and numerous how-to articles. Seminar topics include: Passenger Arrival Records — Colonial Times to Mid-Twentieth Century, Naturalization Records — Colonial Times to Early Twentieth Century, Lesser-Used Federal Records, and Discovering the REAL Stories of your Immigrant Ancestors. For more information and registration, see www.rootsweb.ancestry.com/~waogs/seminars.htm

REMEMBER WHEN—1910

A review of the events that made history 100 years ago now seem commonplace, like airshows, while others, like radio contests, are now unknown to the general public.

<u>DATE</u>	<u>EVENT</u>
January 1, 1910	Kellogg's offers first cereal premium prize—funny Jungleland moving picture book
January 2, 1910	1st junior high school in U.S. open in Berkeley, CA
January 10, 1910	1st international air meet in U.S. held in LA
February 1, 1910	The Boy Scouts of America incorporated by William D. Boyce
February 23, 1910	1st radio contest held in Philadelphia
March 1, 1910	Luther Gulick and his wife Charlotte found Camp Fire Girls
March 16, 1910	Barney Oldfield sets land speed record of 131.7 mph at Daytona
March 23, 1910	1st race at Los Angeles Motordome (1st U.S. auto speedway)
March 26, 1910	U.S. forbid immigration to criminals, anarchists, paupers & the sick
April 1, 1910	Dumitru Dan (Romania) completed a 62,137 mile (100,000m) walk
April 3, 1910	Highest mountain in North America, Alaska's Mt. McKinley climbed
April 14, 1910	President William Howard Taft becomes the first president to throw out the first baseball on opening day
May 10, 1910	Halley's Comet closest approach to Earth in 1910 pass
May 11, 1910	An act of the U.S. Congress establishes Glacier National Park in Montana
May 18, 1910	Passage of Earth through tail of Halley's Comet causes near-panic
June 1, 1910	Robert Falcon Scott's South Pole expedition leaves England
June 19, 1910	Father's Day celebrated for the 1st time (Spokane, WA)
June 20, 1910	"Krazy Kat" comic strip by George Herriman debuts in NY Journal
June 22, 1910	1st airship with passengers set afloat—Zeppelin Deutschland
July 1, 1910	James MacGillivray publishes 1st account of Paul Bunyan in the Detroit News
August 1, 1910	Yellow Cab is founded
August 14, 1910	6th International Congress of Esperantists held in Washington, D.C.
October 1, 1910	Berkshire Cattle Fair held in Pittsfield, MA (1st state fair)
October 2, 1910	1st collision of 2 aircraft (Milan, Italy)
October 23, 1910	Blanche Scott became 1st woman to solo a public airplane flight
November 12, 1910	1st movie stunt: man jumps into Hudson River from a burning balloon
November 14, 1910	1st airplane flight from the deck of a ship, Norfolk, VA
November 22, 1910	Arthur Knight patents steel shaft golf clubs
November 27, 1910	NY's Penn Station opens as world's largest railway terminal
December 22, 1910	U.S. postal savings stamp 1st issued

(Submitted by Marty Gale, from Moody County Historical Society, Flandreau, SD, Winter 2010)

EGS MARCH 2010 MEETING CALENDAR

EGS Board Meeting (First Thursday, 10:00 AM)	The Eastside Genealogical Society Board will meet on Thursday, April 1, 10:00 AM—Noon at the Bellevue Regional Library, Room 6.
EGS General Meeting (Second Thursday, 7:00 PM)	The Eastside Genealogical Society will meet on Thursday, April 8 at 7:00 PM in the Bellevue Regional Library. Doors open at 6:30 PM and visitors are welcome.
Canadian Interest Group (First Thursday, 1:00 PM)	The Canadian Interest Group will meet on Thursday, April 1 (no fooling), from 1:00 to 3:00 PM at the Bellevue Library, room 4. We will review Web sites and other resources for Canadian research. Contact John Howell (206) 817-7516 with any comments or questions.
Computer Interest Group (Fourth Saturday, 9:30 AM)	Do you know what a blog is? Join us on Saturday, April 24 at 9:30 AM in the Community Room at Crossroads Bellevue , when we'll be sharing information on current blogs that can lead you to up-to-date information on researching your ancestors. Come to learn, or to tell us about your favorite blogs. (Margery Perdue, m.perdue@comcast.net)
Czech/Slovak Interest Group (Check Bulletin for meeting information)	Our next meeting will be on Saturday, April 3, 9:30 AM to Noon at Fire Station #22 in Kirkland. See website for more information: www.rootsweb.ancestry.com/~wacsig/ (Rosie Bodien, 425-828-0170 or rosie@bodien.org .)
EGS Lunch Bunch (Fourth Thursday, 11:30 AM)	Meets every fourth Thursday, 11:30 AM , at Crossroads Mall Shopping Center Food Court.
German Interest Group (First Friday, 1:00 PM)	The German Interest Group will meet on Friday, April 2, from 1:00 – 3:00 PM at the Community Meeting Room at Crossroads Mall in Bellevue. Our topic will be “Brickwalls and Questions? Bring ‘em on!” We'll help one another brainstorm solutions to our genealogical mysteries. Visitors are always welcome. (Ann annp42@comcast.net or 206-232-1104)
Irish and Scots-Irish Interest Group (First Wednesday, 10:00 AM)	Irish Interest Group's program for the April 7 meeting at the Community Room at Crossroads Mall in Bellevue at 10:00 AM is <i>Google Your Family Tree</i> : the book, the website, all the Google tricks you haven't learned yet. (Ann Lamb 425-557-0440 or AnnL7777@aol.com)
Italian Interest Group (Third Saturday, 1:30 PM)	The Italian Interest Group will meet Saturday, April 17, 10:00 AM - Noon at the Lake Hills Library (NOTE: change of time due to library scheduling). (Mary Sangalang, 425-649-2250 or collectingroots@msn.com)
Legacy Interest Group (First Wednesday, 12:30 PM)	The Legacy Interest Group will meet in the Crossroads Community Room at Crossroads Mall in Bellevue on Wednesday, April 7 from 12:30 – 2:30 PM. Contact Sherry for meeting information. (Sherry Holthe, sherdh@centurytel.net or 425-880-4407)
Scandinavian Interest Group (Second Tuesday, 10:00 AM)	The program for the Scandinavian Interest Group's April meeting will be a talk by Joanne Volberding about her trip to Norway. We meet on Tuesday, April 13, 10:00 AM - Noon in the Puget Sound Archive Building at Bellevue Community College. Please see the website for more information eastsidesig.spaces.live.com (Sandy Arildson, 425-747-5621, or sarildson@yahoo.com)
Shore to Shore Interest Group (Changes monthly, call Shirley)	The Shore to Shore Interest Group is scheduled to go to the Tacoma Public Library on Tuesday, April 6. Visitors welcome — please contact Shirley Dowd if you plan to go to this activity. (Shirley Dowd, 425-454-0078)

LOCATION ADDRESSES

Bellevue Regional Library NE 12th St. and 110th Ave. NE Bellevue, WA 425-450-1760	Crossroads Mall Shopping Center Community Meeting Room NE 8th and 156th Ave NE, Bellevue, WA	FHC - Bellevue 10675 NE 20th St Bellevue, WA 425-454-2690	FHC - Kirkland 7910 NE 132nd St. Kirkland, WA 425-821-8781
Issaquah Public Library 140 East Sunset Way Issaquah, WA 425-392-5430	Lake Hills Library 15528 Lake Hills Blvd. SE Bellevue, WA 425-747-3350	National Archives and Records Admin. 6125 Sand Point Way NE Seattle, WA 98115-7999 206-336-5115	Fiske Genealogical Library 1644 43rd Ave E/ Seattle, WA 98122 206-328-2716
FHC - Redmond 10115 172nd Ave. NE Redmond, WA 425-861-9273	Newport Way Library 14520 SE Newport Way Bellevue WA 425-747-2390	North Bend Library 115 East Fourth St North Bend, WA 425-888-0554	Redmond Regional Library 15990 NE 85th St Redmond, WA 425-885-1861
WA State Puget Sound Regional Archives BCC, 3000 Landerholm SE, MS-100 Bellevue, WA 98007	Seattle Public Library 1000 Fourth Ave Seattle, WA 206-386-4636	Snoqualmie Public Library 38580 SE River Street Snoqualmie, WA 425-888-1223	Fire Station #22 6602 108th Ave NE Kirkland, WA

WHAT THE CENSUS SAID ABOUT US...IN 1870

Radical Cartography has published dozens of stunning charts and maps that illustrate much of the data in the 1870 U.S. census. You can view small versions of the maps and charts on your screen or download much larger images as ZIP files and then view them offline at your leisure.



The 1870 census was the first statistical census of the United States. Earlier efforts focused mostly on the names and the total number of inhabitants. The 1870 census asked many more questions and those answers were tabulated to provide an interesting statistical picture of a fast-growing country that was full of immigrants.

54 maps and charts are available, reproduced from the Statistical Atlas of the United States as published in 1874. You can view the images on your computer screen; click on an image to see a larger version. Instructions are also provided to download even larger images.

You can see the Statistical Atlas of the United States at <http://www.radicalcartography.net/index.html?9thcensus>

CONNECTED HISTORY PROJECT SEARCH ENGINE COMBINES HISTORICAL DATABASES

Once completed, the Connected History Project search engine will index digitized books, newspapers, manuscripts, genealogical records, maps and images that date from 1500 to 1900. It will give academics or members of the public a single site that lets them search all the collections. "There are a number of electronic resources that have been created by universities and by commercial providers," said Professor Robert Shoemaker from the University of Sheffield which is heading the project. "They are all available, and all separate and some require subscriptions."

Twelve institutions have signed up to contribute their collections but more are expected to join in the future. The initial partners include the University of Sheffield, the Institute of Historical Research, the University of Hertfordshire and King's College, London. The first phase of the Connected History project should be completed by March 2011.

You can read more in an article by Mark Ward in the BBC News site at <http://news.bbc.co.uk/2/hi/technology/8577164.stm>. The article is a bit short on details, however. Will it include Wales? Scotland? Northern Ireland? or perhaps even Ireland?

(The previous two articles are from Eastman's Online Genealogy Newsletter and is copyright by Richard W. Eastman. It is re-published here with the permission of the author. Information about the newsletter is available at <http://www.eogn.com>.)

EASTSIDE GENEALOGICAL SOCIETY CONTACTS

President*	Bob Barnes	425-747-4863	rstithbarnes@hotmail.com
Vice President*	Judy Meredith	425-702-9321	ja.meredith@verizon.net
Secretary*	Walta McCarley	425-376-0539	wmccarley@yahoo.com
Treasurer*	Ed Schultz	425-271-0424	panamaed@gmail.com
Trustee*	Sharron Filer	425-885-7213	n.sfiler@gte.net
Past President*	Norb Ziegler	425-557-2108	zieglerwa@sprintmail.com
Education Chair*			
Archivist/Historian*	Walta McCarley	425-746-7557	wmccarley@yahoo.com
Library Chair*	Winifred Sihon	425-746-3573	wsihon@comcast.net
Acquisitions	Sarah Fleming	425-957-1134	sarahrosefleming@earthlink.net
Membership Chair*	Dorothy Mehrer	425-822-7316	dmehrer@netscape.com
Newsletter Editor*	Kim Nichols	360-668-3937	kimberly@dormik.com
Newsletter Contributors	Mickey Main	425-747-2038	mickeymain@comcast.net
	Sharron Filer	425-885-7213	n.sfiler@gte.net
Newsletter Mailing	Jack and Jean Newman	425-746-2324	jnewman495@earthlink.net
Nominating Chair*	Norb Ziegler	425-557-2108	zieglerwa@sprintmail.com
	Marty Gale	206-232-6471	martygale@futuretense.net
Program Chair*	Judy Meredith	425-702-9321	ja.meredith@verizon.net
Publicity*	Dorothy Pretare	425-277-0831	dpngen@comcast.net
Representatives:			
DAR	Donna Hart	425-831-5978	carldonna1@comcast.net
AKCHO	Bob Sandbo	425-454-5606	bobpat9@jps.net
Bellevue Reg Library	Pat Sandbo	425-454-5606	bobpat9@jps.net
FGS	Peter Robertson	206-236-2473	pnrmerc@earthlink.net
SIG Representative*			
Sunshine Chair*	Patti Wehrs	787-599-2746	pwehrs@msn.com
Surname File	Walta McCarley	425-376-0539	wmccarley@yahoo.com
Webmaster*	Kim Nichols	360-668-3937	kimberly@dormik.com

* EGS Board Member

Special Interest Group (SIG) Contacts

Canadian	John Howell	206-817-7516	jhowell54@comcast.net
Computer	Margery Perdue	425-643-3502	m.perdue@comcast.net
Czech/Slovak	Rosie Bodien	425-828-0170	rosie@bodien.org
German	Ann Passe	206-232-1104	annp42@comcast.net
Irish	Ann Lamb	425-557-0440	AnnL7777@aol.com
Italian	Mary D. Sangalang	425-649-2250	collectingroots@msn.com
Legacy	Sherry Holthe	425-880-4407	sherdh@centurytel.net
Lunch Bunch			
Portuguese(inactive)	Barbara Guyll	425-746-5603	barbaraguyll@comcast.net
Scandinavian	Sandy Arildson	425-747-5621	sarildson@yahoo.com
Shore to Shore	Shirley Dowd	425-454-0078	



Eastside Genealogical Society
 P.O. Box 374
 Bellevue, WA 98009-0374

DATED MATERIAL
 PLEASE DO NOT HOLD

THE EASTSIDE GENEALOGICAL SOCIETY

PURPOSE:

The EGS provides members a forum for learning and the exchange of information related to genealogy. The Society obtains and provides resources for use by members, encourages genealogical research and education, and provides community outreach through programs, classes, seminars and library volunteers.

MEETINGS:

EGS monthly meetings are held on the second Thursday of each month (except December) at 7:00 P.M. at the Bellevue Regional Library, NE 12th Street and 110th Ave. NE, Bellevue WA. A get acquainted and ask questions session is open at 6:30 P.M.

MEMBERSHIP:

Effective 1 January 2001, membership dues are: Individual—\$17, Couple—\$22, Senior—\$15, Senior Couple, \$19, Lifetime—15 times annual membership. To join the society, send your check with your name, phone number, address (nine digit zip please) and e-mail address (if applicable) to the address at the bottom of this page. Please mark "Membership" on your envelope.

NEWSLETTER SCHEDULE:

The *Bulletin Board* is published each month, except December. Submission of news and articles to the *Bulletin Board* must be in writing and received **by the 15th of each month** for inclusion in the following month's newsletter. If you are unable to meet the deadline, please call Kim Nichols at 360-668-3937 to make special arrangements. Please mail submissions to: Kim Nichols, 12422 219th Place SE, Snohomish, WA 98296 or e-mail to: kimberly@dormik.com

Note: The EGS Board and the *Bulletin Board* reserve the right to limit and prioritize event announcements, space permitting, to non-profit organization items of genealogical interest. Neither the EGS nor the editors of the *Bulletin Board* accept responsibility for errors of fact or judgment in the material submitted to and printed in the *Bulletin Board*. If errors are brought to our attention, we will try to correct them.

The *Bulletin Board* is a publication of:

The Eastside Genealogical Society
 P.O. Box 374
 Bellevue, WA 98009-0374