



INSIDE THIS ISSUE:

<i>From the President</i>	2
<i>From the New President</i>	2
<i>2005's New Members</i>	2
<i>Monthly Programs</i>	3
<i>Seminar</i>	3
<i>Research Trips</i>	4
<i>Calendar of Events</i>	5
<i>News from the Library</i>	6
<i>Wish List</i>	7
<i>Congratulations</i>	7
<i>Discussion Groups</i>	7
<i>Genealogical Gifts</i>	8

## DRESSING UP—GENEALOGICALLY

If you missed the September 17th JCGS meeting at the Tri-Area Community Center you should be kicking yourself. A 19th Century Fashion Show was put on by JCGS member, Pam Wilson, who is the historical costume coordinator for Fort Nisqually in Tacoma.

She made the dress she modeled plus the ones Harlean Hamilton and Carrie Wooten wore in the picture to the right. The outfit Pam is wearing is a 1882 two-piece dress with a bustle. In the same picture, Gloria Ricketts' dress is an 1890's silk two piece outfit that she made. Steve Ricketts is wearing a



Left to right: Pam Wilson, Gloria and Steve Ricketts, Harlean Hamilton, and Carrie Wooten.

wool Hudson's Bay blanket capote from the fur trade era of 1840-1855. Harlean Hamilton is wearing an 1850 era wool work dress. Carrie Wooten is wearing an 1855 era cotton calico two-piece dress.



The Ricketts, in the picture to the left, wear their costumes for the Cemetery Tour they put on for the Jefferson County High School at the Victorian Festival in Port Townsend. They are dressed as Judge and Mrs. James G. Swan of Port Townsend ready to attend a Victorian ball.

The lovely, ladies hat to the upper-right, made by Pam



Steve and Gloria Ricketts dressed as Judge and Mrs. James G. Swan of Port Townsend.

### Victorian Christmas

[www.victoriana.com/christmas](http://www.victoriana.com/christmas)

Christmas holiday material

from the

Victorian period

**NEW MEMBERS**  
**2005**

*Paul & Pat Aniotzbehere*

*Sandy & Robert Barrett*

*Allan & Charlene Bentson*

*Betty Bobo*

*Mary Lou Boegehold*

*Ginny Bunch*

*Charles & Sally Buttler*

*Linda Carson*

*Rita Clark*

*Phillip Crawford*

*Doug Ehler*

*Robert Ehlers*

*Susan Fleming*

*Isobell Forward*

*Len Friedel*

*Peter Gariss*

*Heather Gilden*

*James and Diane Good*

*Leah Hammer*

*Cathy Haycraft*

*Robert Jenusaitis*

*(Continued on page 4)*

## FROM THE PRESIDENT

I admit, it is a bit odd that the only time I write a "President's Column" for the newsletter is to announce my resignation, but that is what I am doing. On October 19th, I formally resigned from my position as President of the Jefferson County Genealogical Society. I had not been able to give the time, focus and energy needed to properly execute the duties of the office of President, and I did not foresee this changing anytime during the balance of my term, which doesn't end until next June.

The Society is very fortunate that Jesse Stewart agreed to assume the duties, and the title, of President. Jesse brings a great deal of enthusiasm and spirit to her new position. I look forward to watching the Society grow and thrive under her leadership. Lest you wonder, I am not leaving the Society; I am merely toning down my involvement to that of member and volunteer. Which brings up a good point; there are always opportunities to volunteer at JCGS—just speak with Jesse or with Bev Brice.

Warmest Regards,  
Lesa Barns

## FROM THE NEW PRESIDENT

*by Jesse Stewart*

It certainly was with regret that we accepted Lesa's resignation as President. Under her tutelage, I was preparing to assume these duties, just not quite so soon! We'll miss Lesa's leadership, but look forward to her continued contributions as a volunteer with JCGS.

Your Executive Committee has been taking a look at our Society—what we are and where we want to go. To that end we held a one day workshop where we exchanged ideas and visions of the future. One of the things that has impressed me most about JCGS is the wonderful collection of data on Jefferson County residents that has been compiled over the years. From my experience, we're way ahead of most of the other genealogy societies I have visited! Under the leadership of Lora Eccles, with help from Eileen Martin, the Research Committee continues to collect even more information focusing most recently on updating cemetery listings and finding elusive church records. The Society plans on furthering our resources for Jefferson County researchers.

On the other hand, we want to ensure that we are meeting the needs of you, our members, many of whom do not have Jefferson County roots. Over the last couple of years, Bev Brice has led the effort to give us many opportunities to share and learn about researching our elusive ancestors. Our "Southern" and "Research in the States" discussion groups have been great resources to share information and ask for help. The monthly "Resource Corners" have given us the chance to learn, in depth, about research techniques and resources that are available to us. And, as you may have noted, our collection of books, CDs, audio cassettes, etc. at the Research Center continues to grow providing us with more and more information. Our monthly membership meetings, coordinated by the Program Committee under Carrie Wooten's leadership, have been creative and very informative.

Looking forward, we'd like your suggestion on activities that might help you more. During our January membership meeting we will be asking for your suggestions on how to do this, but, we know that all our members can't attend the meetings so we're asking for your feedback in other ways. Please contact one the Executive Committee members (e-mails and phone numbers on page 9 of this newsletter) with your ideas on classes, resource cor-

*(Continued on page 8)*

## MONTHLY PROGRAMS FOR DECEMBER, JANUARY AND FEBRUARY

The December 17th monthly membership meeting at the Tri-Area Community Center will be a "Holiday Party" Please bring cookies or other goodies to share. We will also be discussing this interesting question: "Why do we do genealogy?" Come and share the fun!

The January 21st meeting will be "Looking Ahead". We will have a discussion with the members on JCGS goals. Please come and share your ideas for the coming years. There will be a free raffle with three great prizes! The first prize will be a gift certificate for genealogy books; the second prize will be a gift certificate for the new JCGS mug which is glass with the JCGS logo and your name and membership number etched on it. The third prize will be a gift certificate for two hours of free consultation with one of our Experienced Genealogists.

The February 18th meeting will feature guest speaker, Barbara Larsen. She will lead a discussion on "Ghost Hunting in the Graveyards." This will include tips on photographing tombstones and the equipment necessary to record this important addition to your research.

## DRESSING UP (CONT.)

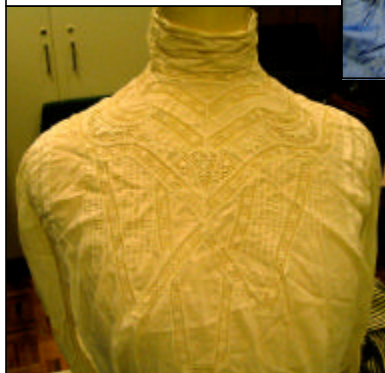
*(Continued from page 1)*

Wilson, is an 1880-1890's straw hat with feathers, silk flowers and a bird. The fine silk top hat belongs to Steve Ricketts.



*Carrie Wooten is wearing an 1865-1875 cotton quilted, prairie bonnet that belonged to one of her ancestors*

*More fine 19th century clothing displayed at the September 17th JCGS program.*



*Wouldn't you hate to have your pantaloons turn up in a fashion show!*



## MARK YOUR CALENDAR! ANNUAL JCGS SEMINAR—MARCH 18

This year the annual, all day, JCGS seminar will feature Beverly Rice talking about "Missing Pieces". Ms. Rice is an associate of PastTracker Association Genealogical Services and a Certified Genealogist<sup>SM</sup> (CG<sup>SM</sup>). She was a recent speaker at the Oregon State Genealogical Conference in Salem, Oregon. She will talk about "Missing Pieces"—solving your family puzzles by developing timelines, discovering the occupations of your ancestors and using courthouse records. There were also be a special feature on "Continuing Educational Opportunities".

The cost of the all day program will be \$25 if you register before March 12, 2006. After that date the cost will be \$30.00. A cut-out sign up sheet is on page 10 of this newsletter.

Plan to bring a sack lunch. Coffee and tea will be provided. The seminar will last from 9 AM to 3PM.

*(Continued from page 2)***New Members***Emmy Jones**Joanne Kraus**Barbara Larson**Judy Lindsey**Mary Maltby**William Maxwell**Marian Meany**Carol Middelburg**Jean Murphy**Judy Murr**Elaine, Gary & Eric Nelson**Will O'Donnell**Carol Olsen**Britt-Marie Pearson**Arlene Poché**Karen Polinsky**Sharon Rhodes**Jan Ritland**Pat Roach**David Sachi**Debbie Scott**(Continued on page 6)***RESEARCH TRIPS FOR 2006***by Jesse Stewart*

We will continue our bi-monthly research trips to area genealogy libraries. Hope you can join us for one or more of these trips. Not only do we find lots of good information, but we have a great time!

In **DECEMBER** we will go to the Heritage Quest Library in Sumner and the Tacoma Public Library on the way home (stopping there to avoid the bridge rush). This will be an all-day outing and we will probably return home around 9PM.

In **FEBRUARY** we will go to the Fiske Genealogical Library. This library has a wide variety of resources for North America and Europe, but specializes on New England, New York, Middle Atlantic states and New France and Quebec. Family genealogies, family group sheets, microfilms and CD-ROM archives and internet access are available. Each Wednesday there is an informative lecture from 10-12; however, if you'd prefer to research instead of attend the lecture you can do so. There is an entrance fee of \$5. for non-members. A catalog of books is found on their website: [www.fiske.lib.wa.us/](http://www.fiske.lib.wa.us/)

In **APRIL** we will travel to the Seattle Public Library. This library offers many reference books for most states and many counties, immigration, foreign countries, family histories, and some microfilms. The Library catalog is on line at [Http://www.spl.org](http://www.spl.org). You can search it to see if your areas or families are represented.

In **JUNE** we will go to the Tacoma Public Library which has an extensive catalog of genealogical resources, including many local, county and state resources as well as a vast collection of family histories. Their searchable catalog is on their website at [www.tpl.lib.wa.us/](http://www.tpl.lib.wa.us/)

In **AUGUST** we will go to the National Archives & Seattle Genealogical Society. The Archives are well known for having microfilms of all federal censuses from 1790-1930 as well as index books and soundex microfilms to help you find your ancestors more easily. However, the Archives have other resources available such as Revolutionary War Pensions and land bounty records, Civil War military indices, some passenger and naturalization lists, some land records, listings of postmasters and more. You can check the website at <http://www.archives.gov/facilities/wa.html>. Across the street from the Archives is the Seattle Genealogical Society (open 10AM–3PM) which houses many reference books and CDs, specializing in Canada, England, Scandinavia, Washington State, New Jersey, Virginia, Pennsylvania, and Oregon and family histories available at <http://www.rootsweb-waseags/>. There is no entrance fee for the Archives; however, the Seattle Genealogical Society charges a \$4 fee for non-members.

In **OCTOBER** we will take a trip to the Puget Sound Genealogical Society in Kitsap County. This Society has a nice collection—a good complement to ours—strong in some areas where JCGS has fewer resources. This will be a shorter trip than most, so perfect for those who don't want to take a full day away for researching. PSGS does not have its catalog on line, so you'll have to come prepared to research everything.

In **DECEMBER, 2006** we will return to the Seattle Public Library.

Email me at [jessebirder@cablespeed.com](mailto:jessebirder@cablespeed.com) or call at 437-8103 if you have questions or suggestions about JCGS trips.

# CALENDAR OF EVENTS

## DECEMBER \* JANUARY \* FEBRUARY

DATE	MEETING	LOCATION
December 1, Thursday—10:00 AM	Library Volunteer Meeting	Research Center
December 7, Wednesday	Heritage Quest Library and Tacoma Public Library	Sumner and Tacoma
December 13, Tuesday—10:00 AM	Midwest Discussion Group	Research Center
December 16, Friday—10:00 AM	Southern Group	Research Center
December 17, Saturday 9:30 AM	<b>MONTHLY MEETING—HOLIDAY PARTY!</b>	Tri-Area Community Center
December 19—all week	CLOSED	Research Center
December 26-all week	CLOSED	Research Center
January 10, Tuesday 10:00 AM	Midwest Discussion Group	Research Center
January 20, Friday 10:00 AM	Southern Group	Research Center
January 21, Saturday 9:30 AM	<b>MONTHLY MEETING—LOOKING AHEAD</b>	Tri-Area Community Center
January 26, Thursday 10:00 AM	Library Volunteer Meeting	Research Center
January 28, Saturday 10:00 AM	Resource Corner— Networking On-Line	Research Center
February 1, Wednesday	Fiske Genealogical Library Trip	Seattle
February 4, Saturday all day	Closed—Library Volunteer Training Day	Research Center
February 10, Friday 10:00 AM	Library Committee Meeting	Research Center
February 14, Tuesday 10:00 AM	Midwest Discussion Group	Research Center
February 17, Friday 10:00 AM	Southern Group	Research Center
February 18, Saturday 9:30 AM	<b>MONTHLY MEETING-GHOST HUNTING IN THE GRAVEYARDS</b>	Tri-Area Community Center
February 23, Thursday 10:00 AM	Library Volunteer Meeting	Research Center
February 25, Saturday 10:00 AM	Resource Corner (to be announced)	Research Center
March 18, Saturday 9:00 to 3:00	<b>ANNUAL JCGS SEMINAR</b> Beverly Rice—"Missing Pieces"	Tri-Area Community Center
April 3, Monday	Seattle Public Library Trip	Seattle
June 5, Monday	Tacoma Public Library Trip	Tacoma
August 1, Tuesday	National Archives & Seattle Genealogical Society	Seattle
October 4, Monday	Puget Sound Genealogical Society	Kitsap County
December 4, 2006 Monday	Seattle Public Library	Seattle



## NEWS FROM THE LIBRARY

by Bev Brice

(Continued from page 4)

### **New Members**

*Gail & Phil Smith*

*Kathleen Such*

*Cate Tedford*

*Eugene & Karen Tenney*

*Elizabeth Thomas*

*Vince & Mary Ann  
Verneuil*

*Ann Virtue*

*Marzee Wade*

*Trish Warner*

*Dorothy Yantz*

*Elizabeth Yates*

### **Jefferson County Research**

2005 was a busy year for improving access to Jefferson County resources. It takes many hours of volunteer time to accomplish this and a hearty THANK YOU is in order to the following people who have helped: Tom Berg, Harlean Hamilton, Jerry Hamilton, Connie Ross, Don Wilson, Wayne Howell, Jesse Stewart, Jean Redcap, Eunice Franklin, Eileen Martin, Mary Stolaas, Elsie Lopeman, Mimi Starks, Diana Petersen, Pam Wilson, Joan Buhler, Lora Eccles, Pat Rudolph, Marge Samuelson, Barb Larsen, Dorothy Hermansen, and Nancy Vleck.

### **New to the Kiosk**

The Computer Kiosk is our access point in the Library for records that have been extracted or indexed. Type in a surname and you can immediately see what is available. This past year we have added the following census years to the Kiosk: 1870, 1879, 1881, 1883, 1887 and 1890. The information was available in books published by the Society, but we can now access the information directly. An index to Probate Records 1891 to 1918, held by the regional Archives in Bellingham, was another book that had been published. It is now in the Kiosk as well.

### **New Records**

An index to civil cases filed in Superior Court 1890-1913 is an addition to Jefferson County resources. The originals are held in Bellingham. The index includes both plaintiff and defendant and only gives the locating information for the case. Over 1900 cases are in this index. Another set of new records come from St. Paul Episcopal Church 1913-1943 and include marriages, burials, confirmations, members and baptisms. It is particularly helpful to have a reference for the 1913-1943 time period as most of our indexed information is from the late 1800s. We have completed work on the St. Paul members 1943-1975 as well. The complete set of records for this time period is being extracted now. Another new addition to the library is delayed birth certificates issued from 1868-1891. An index has been prepared in along with the copy of the original.

### **Updating Databases**

In 2000 we extracted funeral home records from the Kosec Funeral Home. These records cover the period 1913 to 2000, incorporating the records created by businesses under other names. This year we updated the records through 2004. There is a wealth of information included there. As is true with any extracted record, it is always wise to consult the original. That said, having access to the information in our library has been a significant help to researchers. In 1985 the Society walked the cemeteries in the county and published books on each one. The information is available in the Kiosk. We have started an update of the cemetery information. Brinnon, Gardiner, and Shine cemeteries have been completed. Chiacum, Fort Worden, Center, Quilcene, and Marrowstone cemeteries are in the final stages of completion. It is our plan to walk the remaining cemeteries next year. A subject index to the *Jefferson County Leader* has been updated for 2004 and through August of 2005. This is a partial index and an on-going project. A people index to *The Leader* is also an on-going project. The categories of births, weddings, and divorces are used to compile the index. The obituary index is updated weekly.

Anyone willing to help with our many projects is most welcome. Work can be done in the Library or at home. We have software that works on MACs or PCs. Let Lora or Bev know that you are interested. Most of us working on these projects don't have Jefferson County families but find it is a way to repay for the invaluable assistance we have received from other researchers.

---

### **GOODBY LOUISE, THANK YOU, WE WILL MISS YOU...**

Thank you and best wishes to Louise Cannon. Louise and Joe left Port Townsend Nov 1st to take up their new residence in Arizona. Since they were moving to be closer to family, we really couldn't argue with the decision, but Louise leaves a big hole in the Society. She has been a Library Volunteer, handling scheduling, for so many years I can't count them. She did this in addition to her work schedule in the schools. Her smiling face and willingness to help are greatly missed.

### Washington State Records

[www.secstate.wa.gov/  
history/search.aspx](http://www.secstate.wa.gov/history/search.aspx)

*This stellar web site indexes more than 1.1 million state census and naturalization records, plus collections such as veterans home registers and prisoner lists.*

### Are you on the Society Mailing List?

JCGS maintains a mailing list for use of members. It is not used very often so you don't have to worry about being overwhelmed.

What you will receive are notices about programs and research tips that members want to share. You have to request to be added, we don't do it automatically when you join the Society.

So, if you haven't done so yet, and want to join, contact Phil Kohl:

[pkohl@olympus.net](mailto:pkohl@olympus.net)  
with your request to be put on the list

## WISH I MAY, WISH I MIGHT...

Remember how the 50/50 book purchase plan works? You suggest a book for purchase for the library. If the Book Committee agrees that it would be useful, the Society orders the book. You pay half the cost, plus shipping and get to use the book for the first 6 weeks. It then goes on the shelf and you can check it out for 2 weeks any time you need it. We have purchased 6 new items for the Library this way in 2005.

### Need an idea of what to buy? Here's a WISH LIST:

<u>Polish Roots</u> by Rosemary Chorzempa	\$19.95
<u>Tracing Ancestors Among the Five Civilized Tribes</u> (Cherokees, Chocktaws, Chickasaws, Creeks, Seminoles)	\$24.95
<u>Local and Family Histories, Connecticut</u> (9 books) CD	\$39.95
<u>Connecticut Military Records: Soldiers and Officers</u> (5 books) CD	\$29.99
<u>Early Kentucky Settlers</u> (12 books) CD	\$29.99
<u>New York in the Colonial Wars, The Revolution, the War of 1812</u> (6 books) CD	\$29.99
<u>Ohio Vital Records, 1800-1850</u> (Gateway to the West) CD	\$29.99

## CONGRATULATIONS!

Lesa Barns, President of JCGS presents an award from the Washington State Genealogical Society to Society member, Marge Samuelson. The award is for exceptional and consistent support of the goals and operation of the Jefferson County Genealogical Society. The award was presented at the September 17th meeting.

Great recognition for a terrific member of the Society and an excellent friend to genealogy!

**WAY TO GO, MARGE !**



## DISCUSSION GROUPS

The Tuesday Discussion Group will broaden the focus to include researching anywhere in the Midwest. Come with your questions, problems, and success stories to share. The Southern Group continues to talk about research south of the Mason-Dixon Line.

The Resource Corner for January will consider Networking Online. This is a major way of contacting other who are working on your family. Let's share our experiences of where you have gone. We will look at tips for writing effective queries and consider whether mailing lists are a good thing to use. The topic for the February Resource Corner will be announced later.

**New, FREE, web mapping tool!**

[www.earth.google.com](http://www.earth.google.com)

**Prepare to become addicted to one of the Web's newest mapping tools. This downloadable freeware soups up the Google Maps Web site by plotting high-resolution satellite photos onto a 3-D model of the Earth's surface: You can create a custom "map" that superimposes labels you select—roads, grids, parks, schools—onto aerial images. The program can produce 3-D streetscapes of 38 American cities. The only catch: Google Earth runs only on Windows 2000 or higher and requires a high-speed Internet connection**

## GENEALOGICAL CHRISTMAS GIFTS

This beautiful stitchery made by JCGS member, Eileen Martin, for a family reunion reminds us that genealogy provides a great resource for gift giving.

The internet offers excellent resources if you are interested in making something genealogical for a holiday gift for some lucky person in your family. The following web sites might be helpful to you:

### Chart Printing Services

[www.ancestryprinting.com](http://www.ancestryprinting.com)  
[www.fampres.com](http://www.fampres.com)  
[www.generationmaps.com](http://www.generationmaps.com)  
[www.familytrees.com](http://www.familytrees.com)

### Project Ideas and How To

5 ways to display your family tree  
[www.genealogy.about.com/cs/publishing/a/charts.htm](http://www.genealogy.about.com/cs/publishing/a/charts.htm)

### Create your own Printable family photo calendar

[www.genealogy.about.com/cs/photos/a/photo-calendar.htm](http://www.genealogy.about.com/cs/photos/a/photo-calendar.htm)

### Family tree projects and gift ideas

[www.genealogy.about.com/od/make-family-tree/a/gift-ideas.htm](http://www.genealogy.about.com/od/make-family-tree/a/gift-ideas.htm)  
[www.pcworld.com/howto/](http://www.pcworld.com/howto/)  
[www.marthastewart.com](http://www.marthastewart.com)  
[www.ancestry.com/learn/library/article.aspx?article=9223](http://www.ancestry.com/learn/library/article.aspx?article=9223)



## From the new President (cont.)

*(Continued from page 2)*

ner topics, membership meeting speakers or anything else that you think might help you as a member of the Society. WE WANT AND NEED YOUR INPUT!

We'll update everyone on our Executive Committee workshop and the results of our membership feedback in the next newsletter. In the meantime, if you'd like more information on our discussion get in touch with one of us—we'd be delighted to share.

I look forward to serving the membership of JCGS as President. Let me know how JCGS can help you.

Jesse Stewart

P.S. We're in need of a Vice President!



### Officers

President	Jesse Stewart	Jessebirder@cablespeed.com	437-8103
Vice President	(vacant)		
Treasurer	Sandy Smith	sandysmith@cablespeed.com	379-9354
Recording Secretary	Eunice Franklin	efranklin@cablespeed.com	379-8392
Corresponding Secretary	Mimi Starks	mkstarks@olypen.com	385-2223

### Contact Persons

Exec. Committee	Jesse Stewart	jessebirder@cablespeed.com	437-8103
Information Tech.	Phil Kohl	pkohl@olympus.net	385-7467
Members' Books	Pam Wilson	kc7pme@tscnet.com	697-3822
Library Vol. Coord.	Bev Brice	bb@olympus.net	385-6599
Librarian	Bev Brice	bb@olympus.net	385-6599
Newsletter Editor	Karen Driscoll	plumwild@olypen.com	732-4426
Researcher	Joan Buhler	jaybee@macaid.com	385-0849
Cemeteries	Eileen Martin	eileenm@olypen.com	385-0673
Research and Obituaries	Lora Eccles	lora@cablespeed.com	385-7743
Surname List	Tom Berg	grebmot@olypen.com	379-2577
Programs	Carrie Wooten		732-4218
Trip Coordinator	Jesse Stewart	jessebirder@cablespeed.com	437-8103
Membership	Tom Berg	grebmot@olypen.com	379-2577

### Dues

Membership Dues  
 \$15 Single/\$20 Couple

### Research Center Location

13692 Airport Cutoff Road  
 Hours: 11 to 4 Tuesday-Saturday  
 Phone (360) 385-9495  
 \$4.00 admission for non-members  
 \$2.00 children



### Surname List

Tom Berg is maintaining a list of Jefferson County surnames being researched by members of our society. Send your updates to P.O. Box 627 Port Townsend, WA 98368-0627 or grebmot@olypen.com

### Treasurer's Report—Respectfully submitted by Sandy Smith, Oct. 28, 2005



1 year CD	\$579.02
6 month CD	\$569.07
6 month CD	\$786.97
1 year CD	\$791.29
Checking	\$5,675.51
Savings	\$3,016.35
Savings	\$4,027.05
<b>Total</b>	<b>\$15,445.26</b>

**Note:**  
 Checking account includes this year's money from the Seattle Foundation in the amount of \$3,748.00

## Jefferson County

PO Box 627  
Port Townsend  
Washington  
98368-0627

Phone: 360-385-9495

We're on the Web!

[Http://www.rootsweb.com/  
~wajcgs](http://www.rootsweb.com/~wajcgs)



### **Meetings:**

*3rd Saturday  
every month  
9:30 AM*

*Tri-Area  
Community Center*

*Chimacum,  
Washington*

**Visitors  
Welcome**



## **SIGN UP FOR 2006 GENEALOGY SOCIETY SEMINAR**

March 18, 2006 JCGS SEMINAR SPEAKER: BEVERLY RICE

**"Missing Pieces"**

**Solving your Family Puzzles by Developing Timelines,  
Discovering the Occupations of Your Ancestors & Using Courthouse Records  
Also a special feature: "Continuing Educational Opportunities"**

Please make checks out to JCGS

Mail to: Sandy Smith, JCGS Treasurer

P.O. Box 627

Port Townsend, WA 98386-0627

NAME \_\_\_\_\_

Address \_\_\_\_\_

City \_\_\_\_\_ State \_\_\_\_\_ Zip \_\_\_\_\_

Phone \_\_\_\_\_ Email \_\_\_\_\_

before March 12th—\$25

after Mar 12th— \$30



Cut