



TARRANT COUNTY TXGENWEB

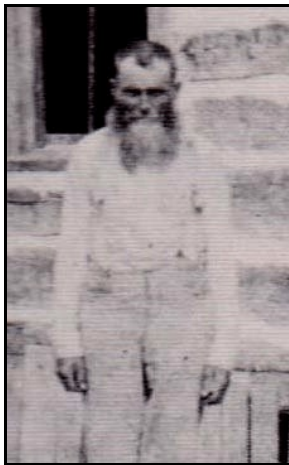
Barbara Knox and Rob Yoder, County Coordinators

Copyright © 2008-2012. All rights reserved.

Civil War Veterans of Northeast Tarrant County

William Thomas Sowell

Compiled by Michael Patterson
Copyright 2008-2012. All rights reserved.



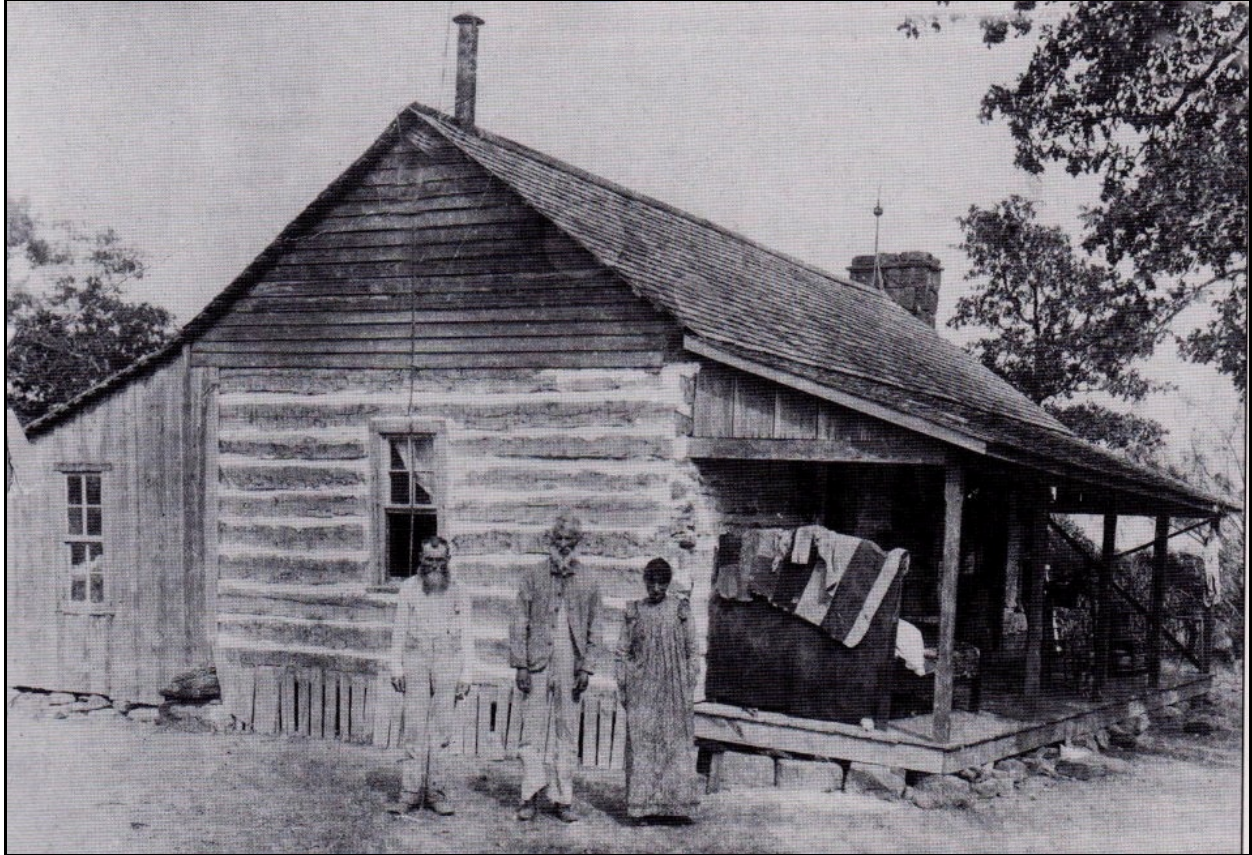
William Sowell

William Thomas Sowell was born in Tennessee on December 7, 1838, a son of William and Margaret Sowell. By 1850 he was living with his parents and siblings in Rutherford County, Tennessee. Ten years later, in 1860, they had moved to Wright County, Missouri.

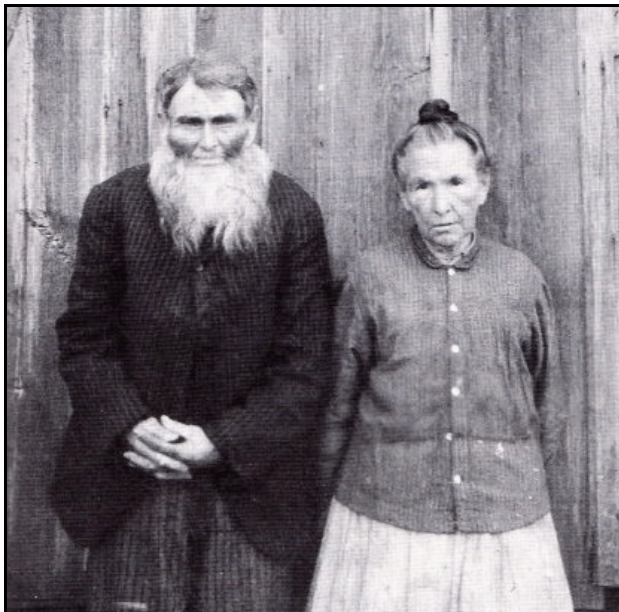
William enlisted about July 1, 1862 as a private in Co. A, 8th Missouri Infantry and served until the end of the war. He started out in Tennessee, then moved to Missouri, then to Texas. Some records suggest he also spent some time in Arkansas. He came to Tarrant County about 1884. He attended the 1902 Confederate veterans' reunion in Dallas, and registered as a resident of Dove, Texas. He was granted a pension by the State of Texas for his Confederate service. He seems to have spent much of his later life living with his married siblings, particularly his sister, Amanda Hemphill (1841-1925). She died only five days before him.

He died on March 3, 1925, and was buried in White's Chapel Cemetery beside Amanda. His death certificate says he died at 10 a.m. of pneumonia. His mother's maiden name is listed as McCory or McCoy. The informant was Mrs. Walter Ratliff of Grapevine.

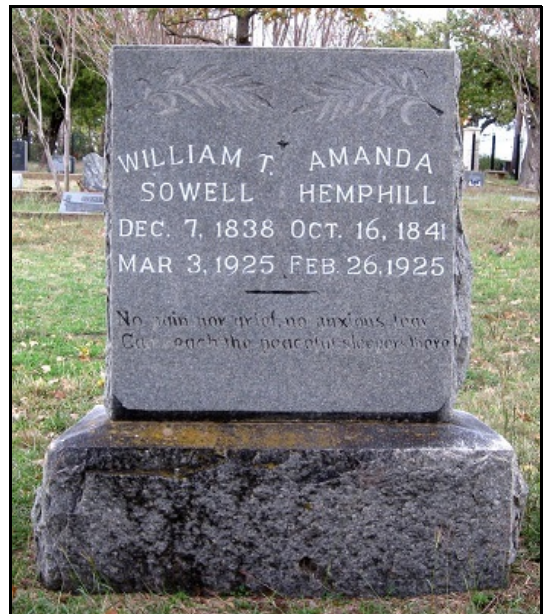
His obituary in the Grapevine Sun says: *"DIED. William Thomas Sowell, age 86 years, died at his home in Grapevine Tuesday afternoon, March 3rd. Funeral services were conducted by Rev. L. Pat Leach at the White's Chapel Church Wednesday, after which interment was in the White's Chapel cemetery. He was the last of five children and was never married. He was converted early in life and joined the Methodist Church at the age of forty years. Quite a number of relatives survive him, among whom are his two nieces, Mrs. W. L. Ratliff of this place and Mrs. F. C. Brown of Fort Worth."*



This is the Torian cabin in Southlake, the one which has been reconstructed on Main Street in Grapevine, Texas. William T. Sowell lived in it with his sister and several of her Torian relatives the last few years of his life. Mr. Sowell is on the left.



William T. Sowell and his sister, Mary Sowell Hemphill Torian, with whom he lived the last part of his life in present-day Southlake.



WILLIAM T. AMANDA
SOWELL HEMPHILL
DEC. 7, 1838 OCT. 16, 1841
MAR. 3, 1925 FEB. 26, 1925

No pain nor grief, no anxious fear,
Can reach the peaceful sleeper here.