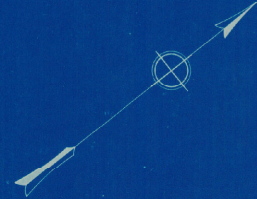
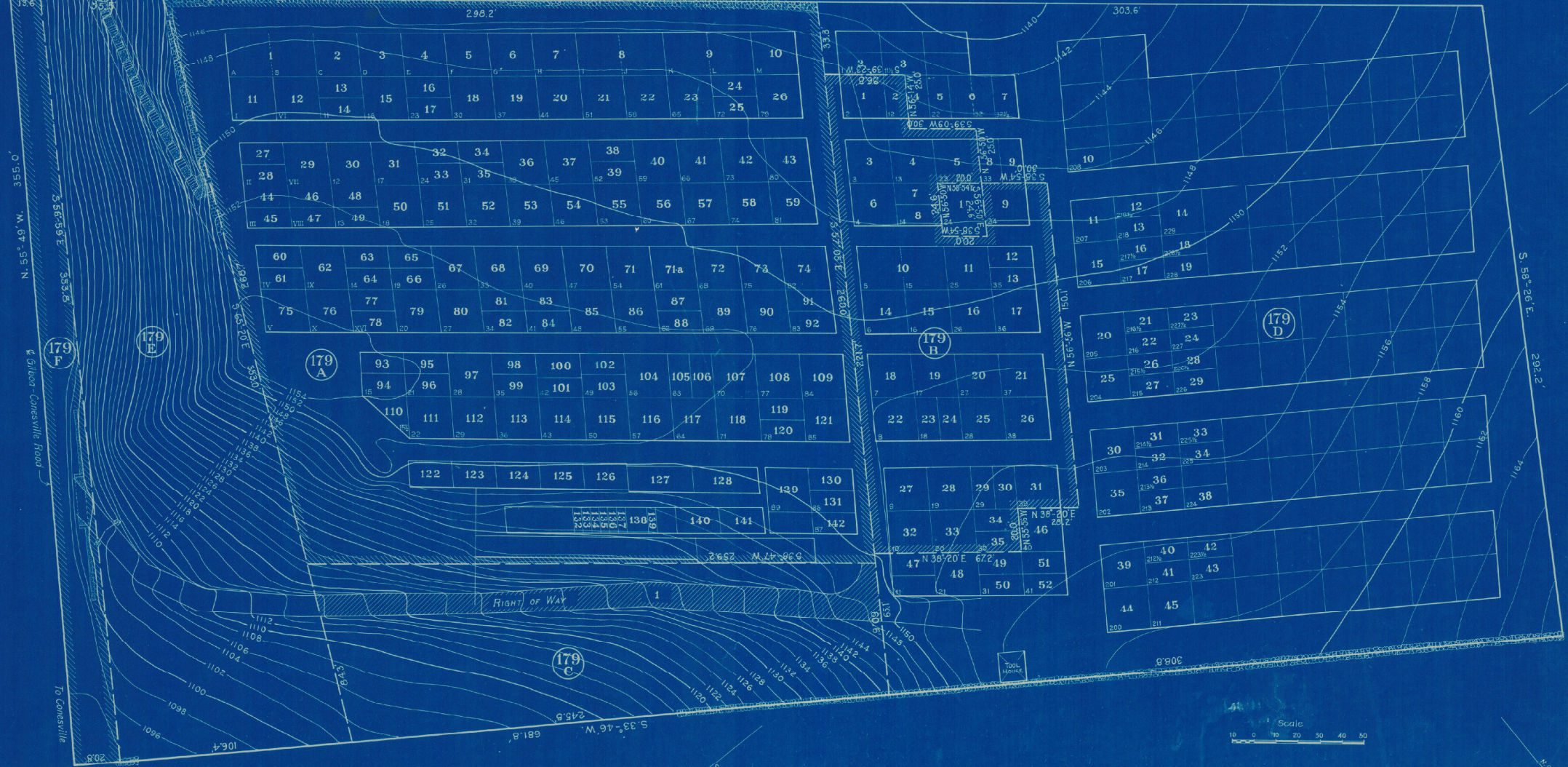
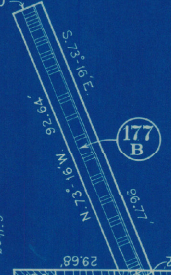


SUB-DIVISIONS OF PARCEL 179

PARCEL	AREA	DESCRIPTION	POSSIBLE OWNERSHIP
179 A	1.661 Acres	179 A-1 to 179 A-142 inclusive = 1.000 Acres Paths and unsold Lots = 0.661 "	See Index Sheets Trustees of Gilboa Rural Cemetery
179 B	0.410 "	179 B-1 to 179 B-35 inclusive = 0.360 Acres Paths = 0.130 "	See Index Sheet Edgar Richtmyer Estate
179 C	0.417 "	179 C-1 = 0.360 " Remaining = 0.348 "	Edgar Richtmyer Estate Trustees of Gilboa Rural Cemetery Edgar Richtmyer Estate
179 D	1.731 "	179 D-1 to 179 D-52 inclusive = 0.303 " Paths and unsold Lots = 1.428 "	See Index Sheet Gilboa Cemetery Association
179 E	0.650 "		Trustees of Gilboa Rural Cemetery Gilboa Cemetery Association
179 F	0.140 "		Gilboa Cemetery Association
179	5.009 "	Now sub-divided as above	
177 B	0.022 "	Formerly a part of Parcel 177	Trustees of Gilboa Rural Cemetery Gilboa Cemetery Association
TOTAL CEMETERY	5.031 "	Including addition from Parcel 177	



N.16°44'E. 100'



Drawn by W.M.H.
Traced by G.H.
Checked by H.A.H.

Scale
10 0 10 20 30 40 50