

ENNING Deal Stoc

ON B. CRAVER
FLORIST

Flowers for All Occasions
PHONE 5753-R
100 AVE. BATAVIA, N. Y.

ERT J. SPINNING
DEXTER AGENCY, INC.
FIRE INSURANCE
PHONE 1715

ER B. ADELMAN
Refrigerators
Washing Machines
ELECTRICAL APPLIANCES
Sales Service
PHONE 1776

ADE & FLOHR
METAL HARDWARE
WILLIAMS PAINTS OILS AND VARNISH
Heating and Heating
ST. Phone 676 - Near Ellcott Square

D W. COWARD
INSURANCE
Phone 20

STAVIA

STAVIA
DIRECTORY
INCLUDING
RIVER VILLAGES
STAVIA
FINANCE
1934
STAVIA

STAVIA
FINANCE
1934
STAVIA

STAVIA
FINANCE
1934
STAVIA

STAVIA
FINANCE
1934
STAVIA

STAVIA
FINANCE
1934
STAVIA

SEACORD & SLOCUM INC

SEACORD & SLOCUM INC
562 E. MAIN
GASOLINE ON
GOODYEAR TIRES

SEACORD & SLOCUM INC
562 E. MAIN
GASOLINE ON
GOODYEAR TIRES

SEACORD & SLOCUM INC
562 E. MAIN
GASOLINE ON
GOODYEAR TIRES

SEACORD & SLOCUM INC
562 E. MAIN
GASOLINE ON
GOODYEAR TIRES

SEACORD & SLOCUM INC
562 E. MAIN
GASOLINE ON
GOODYEAR TIRES

W. A. HALE

W. A. HALE
Protection Engineer
FIRE, CASUALTY, LIFE, SURETY BONDS
Overseas Insurance Service
New Phone 708
Curtis Ridge, 10 Jackson St. Batavia, N. Y.
Res. 374-EM

GENESSEE LUMBER & COAL CO. INC.
Blue Coal
Phone 304
304
JAMES O'NEILL
COKE
364
SOLDERS

Schrafer's Music House
EVERYTHING IN
MUSIC
56 MAIN ST. Phone 615 BATAVIA, N. Y.

GREYBAR COKE CO.
Coal-Coke-Wood
61 ELLICOTT ST.
Phone 600

NEWMAN L. HAWKS
INSURANCE
REAL ESTATE
61 MAIN ST. - MORTGAGES - PHONE 176

HORACE G. MAC TAGGART

HORACE G. MAC TAGGART

HORACE G. MAC TAGGART

LIFE INSURANCE SPECIALIST

MUTUAL LIFE INS. CO. OF N. Y.

NEW YORK

A. G. HENNING Dept. Store

N. D. L. SON B. CRAVEN
FLORIST

Flowers for All Occasions
PHONE 1153-R

19 LINWOOD AVE. BATAVIA, N. Y.

HERBERT J. SPINNING

THE DEXTER AGENCY, INC.

MUTUAL INSURANCE

48 MAIN ST. PHONE 1776

ELMER B. ADELMAN

Radios — Refrigerators
Washing Machines
ELECTRICAL APPLIANCES

303 E. MAIN ST. *Service — Supplies* PHONE 676

GOADE & FLOHR
GENERAL HARDWARE

SHERWIN WILLIAMS PAINTS, OILS AND VARNISH
Plumbing and Heating

272 ELLICOTT ST. Phone 619 Near Ellicott Square

TODD W. COWARD

INSURANCE

125 W. MAIN ST. Phone 220

SEACORD & SLOCUM

PHONE 341
562 E. MAIN

GASOLINE OIL
GOODYEAR TIRES

NEWARK

BATAVIA
DIRECTOR

WATERLOO

WATERLOO

WATERLOO

WATERLOO

WATERLOO

WATERLOO

WATERLOO

WATERLOO

WATERLOO

WATERLOO

WATERLOO

WATERLOO

WATERLOO

WATERLOO

WATERLOO

WATERLOO

WATERLOO

WATERLOO

WATERLOO

WATERLOO

W. A. HALE

Protection Engineers
FIRE CASUALTY LIFE SURETY
Unaffiliated Insurance Service

Office Hours 9:30
CURTIS BLDG. 14 JACKSON ST. BATAVIA

GENESSEE LUMBER & COAL
THE COAL

Phone
364
WATERLOO

Schafer's Music H
EVERYTHING IN

MUSIC

211 MAIN ST. Phone 315

GREYBAR COKE

Coal-Coke-W

81 ELLICOTT ST.

NEWMAN L. HA

INSURANCE

REAL ESTATE
MORTGAGES

George W. Babcock

FINANCIAL—BANKS

1934—BATAVIA DIRECTORY—1934

2

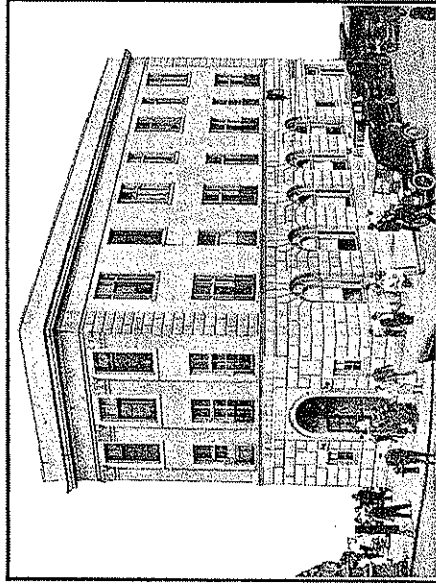
GENESEE TRUST CO.

BATAVIA, N. Y.

Oldest Bank in Genesee County

Established 1829

TRUST SERVICE



Member of Federal Reserve System

Authorized to act as Executor and Trustee under wills: Administrator. Trustee of living trusts. Trustee under Life Insurance Trusts. Guardian of Minors or Incompetents.

COMMERCIAL BANKING

PERSONAL CHECKING

ACCOUNTANTS—TRUSTS—BONDS

INTEREST ACCOUNTS

CHRISTMAS CLUB

MANNING'S

BATAVIA

(NEW YORK)

DIRECTORY

FOR YEAR BEGINNING

MARCH, 1934

Including Batavia Town Directory, East
Pembroke Village and Country Roads

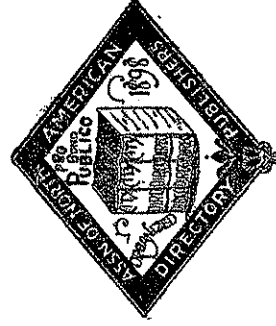
CONTAINING

General Directory of Citizens, Classified Business
Directory, Street Directory and House Guide,
a Record of the City Government,
Societies, Churches, Etc., County,
State, U. S. Governments and Map

VOLUME XXVI

\$8.00

Price



COMPILED AND PUBLISHED BY

H. A. MANNING COMPANY

514 WEDGEWAY BUILDING, SCHENECTADY, N. Y.

COPYRIGHT 1934, BY THE H. A. MANNING CO.

Abbreviations	39	Independent Order of Odd Fellows	112
Advantages	9	Industrial Statistics	10
Advertisers' Index	7	Knights of Columbus	119
Alphabetical Directories	39	Labor Organizations	121
Altitude of City	9	Libraries	125
American Red Cross	9	Location of City	9
Area of City	10	Masonic Organizations	132
Assessed Valuation	266	Mercantile Statistics	10
Blocks, Buildings, Halls, etc		Military Organizations	190
Branded Goods (See Classified Business Directory)	64	Nationality Statistics	9
Cemeteries	267	New York State Government	144
Churches	15	Numerical Street Directory	205
City Directory Library	46	Parks and Points of Interest	259
City Government	261	Police Department	48
Classified Business Directories		Population Statistics	9
Clubs (See Alphabetical Directory)		Post Office	156
Country Road Directory	288	Public Schools	169
Courts	30	Railroads	10
Descriptive Directory Library	9	Religious Institutions	65
Distance to Cities	15	Schools	169
Educational Facilities	9	State Government (See New York State Government)	
Financial	9	Statistics	9
Fire Department	10	Street and House Directory	205
Fraternal Organizations (See Alphabetical Directory)	47	Topography of City	9
Historical	9	Town and Village Officers	46
Hospitals	274	Transportation	10
Incorporated Companies (See Alphabetical Directory)		United States Government	189
		Valuation of Taxable Property	10
		Veteran Military Organizations	190

RECAPITULATION

New names added in compiling 1934 Directory	2,952
Old names taken out in compiling 1934 Directory	1,380
Changes in addresses, etc, made in compiling 1934 Directory	4,930
Total number of changes made in compiling 1934 Directory	8,262

UNITED STATES COPYRIGHT LAW

In force July 1, 1909

That any person who wilfully and for profit shall infringe any copyright secured by this Act or who shall knowingly and wilfully aid or abet such infringement, shall be deemed guilty of a misdemeanor, and upon conviction thereof shall be punished by imprisonment for not exceeding one year, or by a fine of not less than one hundred dollars nor more than one thousand dollars, or both, in the discretion of the court.

ADVERTISERS

Adelman Elmer B	back cover	Genesee Trust Co	2
Amidon's Garage	14	Goade & Flohr	back cover
Athoe Motors Inc	top margins	Green & Sanders	29
Automobile Page	11	Greybar Coke Co	front cover
Ballard Frank W	31	Hale William A	front cover
Bank of Batavia	insert opp name	Hartley's Undertaking Parlors	27
Batavia Auto Parts Co	46	Harvey Robert A	29
Batavia Board of Education	23	Hawks Newman L	front cover
Batavia Chamber of Commerce	15	Henning A G	back cover
Batavia Daily News	37	Hotel Richmond	28
Batavia Hospital	35	Kelly & Davison	31
Batavia Lumber & Coal Co	26	Knox & Dispenza	front cover
Batavia Pure Ice & Storage Co	25	Lowe May E	26
Batavia School Dept	23	Lown Frank A Co	29
Beardsley E J Co	22	MacTaggart Horace G	front cover
Bennett W D	38	Mancuso Charles & Son	28 and top margins
Blue Bird Inn	back cover	Maney S V Agency	29
Board of Education	23	Manning H A Co	38
Carr C L Co	22	Manufacturers' Page	33
Chamber of Commerce	15	Massey-Harris Co	34
Church Page	16	McAlpine, Brunsted & Co	21
Clase Simon & Son	14	McClellan Furniture & Piano Studios	27
Coon William H	31	Mullen Everett J	top margins
Corp F J & Son	front cover	Mutual Life Ins Co of N Y	front cover
Courts	30	Pat's Auto Parts	13
Coward Todd W Agency	back cover	Piehl Hardware	28
Craven Nelson B	back cover	Redfern Terrace Sales	29
Daily News The	37	Ritchlin's Upstairs Store	163
Darch William J	31	Sacred Heart Church	18
Dawson W C	top margins	Secord & Slocum Inc,	back cover
Devener Auto Electric	13	Schafer's Music House	front cover
Dexter Agency Inc	back cover	Scott & Bean	21
Espersen Carl	back cover	Siebert's Garage	14
Fargo Dairy Inc	25	Simond's Garage	13
Fenton's Electrical Service	12	Slight Carlton M	top margins
First National Bank	insert opp name	Spinning Herbert J	back cover
Forsyth Trucking Corp	back bone	Stedman & Waterman	32
Funke & Hawley	14	St James Episcopal Church	19
Genesee County Loan Association	24		
Genesee Lumber & Coal Co	top margins and front cover		

BATAVIA

LOCATION—Batavia occupies a strategic point on the great railroad lines of northeastern United States. It is 402 miles to New York City, 548 to Chicago, 38 to Buffalo, 33 to Rochester, 60 to Niagara Falls, 113 to Syracuse, 243 to Schenectady, 257 to Albany, 457 to Boston, 208 to Cleveland, 281 to Pittsburgh.

TOPOGRAPHICAL—Batavia is the highest point on the New York Central Railroad between New York City and Chicago, 391 feet. It is located on the plains of the Great Lakes district in the midst of a rich agricultural region. The area of the city is 3,640 acres with a water area of 36 acres. There are 56 miles of streets with about one-fourth well paved. Latitude at Court House is 42.59', 51.755"; longitude at Court House is 78.11', 13.690". The nearest mountains are the Alleghenies to the southwest about 50 miles.

HISTORICAL—At the Great end of Tonawanda Creek, now the site of Batavia, stood an ancient town called Deo-on-go-wa, translated in English as "The Great Hearing Place." This town was centuries old when Columbus discovered America. It was the meeting place of the Red Men of the East and the Red Men of the West. Batavia was founded by Joseph Ellicott in 1802 and is older than any of the nearby cities in the section. It was incorporated a village in April, 1823, made a city in January, 1915, it is the county seat of Genesee County which has an area of 495 square miles.

POPULATION—Batavia City and town have shown a consistent growth for many years, the combined population of which runs as follows: 1890, 9, 341; 1900, 11,430; 1910, 13,830; 1920, 15,293; 1925, 17,765. The city proper shows the following gains since 1890: 1890, 7,221; 1900, 9,180; 1910, 11,613; 1920, 13,541; 1925, 15,628; 1929 estimate 16,744. Population of Genesee County is 43,420 with 3,039 aliens. Trading population about 50,000.

St Jerome Hospital	36	Walnut Street Lumber & Coal Co	front cover
St Joseph's Church	17	Watson George W	32
St Paul's Lutheran Church	20	ADAM, Meldrum & Anderson Co	top margins
Thomas Frank	26	BUFFALO	
Turner H E & Co			

H. A. Manning Co.

Map and Directory
Publishers

514 Wedgeway Building, 98 Park Place,
Schenectady, N. Y. New York, N. Y.

33 Lyman Street, Springfield, Mass.
537 Congress Street, Portland, Maine

Over 75 Directory Publications in
New York, New England, New
Jersey, Pennsylvania. Mailing Lists
and House Numbering Contractors.

Map and Directory Specialists

TRANSPORTATION—Batavia has few equals for a city of its size in steam railroad transportation. Railroad lines diverge from the city in eight directions. The New York Central main lines and the Attica Branch and the Tonawanda branch of this railroad; the Lehigh Valley main line; Attica division of the Erie; local electric service about the city; bus lines connect the city to Rochester and Buffalo. Splendid highways make Batavia a touring center. There is an intermediate aviation field.

INDUSTRIAL—There are 45 industries employing 2,716, with a payroll of \$2,400,000, annual production of \$9,630,000. Principal products are agricultural implements, harvesting machinery, automobile parts, paper boxes, wood work, shoes, canned fruits, canned vegetables, tires, galvanized iron, shell novelties, food products, locomotives, shirts, clothing, embossing seals, railway cars, die castings, ventilators, brass mouldings, levels, crates, cigars, cider and vinegar, clamps, flour, ice cream, pails and garbage cans, mayonnaise, labels, nurseries, etc. Labor conditions are excellent and labor supply is good. Total working population is 5,755 men and 2,200 women. There are good available manufacturing sites on trunk line railroads.

MERCANTILE—Batavia is the trading center for the surrounding country in all directions. There are about 50,000 living in the trade zone of Batavia. There are about 300 retailers, 8 wholesalers and 150 professional offices. Competition is keen as indicated by the 61 grocery stores, 14 meat markets, 23 physicians, 20 restaurants, 20 real estate offices, 24 lawyers, 26 insurance offices, many of the leading insurance companies maintain branches here, 8 furniture dealers, 24 clothing and dry goods stores, 46 carpenters and builders, etc. There are 13 hotels and 9 lodging houses.

FINANCIAL—There are four banks, with deposits of over \$11,000,000. Assessed valuation of city is \$17,247,785. City's bonded debt is \$747,449.05.

MISCELLANEOUS—Form of government is mayor and one councilman for each of the six wards. First sewage disposal of the Imhoff construction in America. Water filtration plant with a capacity of 1,300,000 gallons daily. 38.30 miles of sanitary sewers, 12.30 miles of storm sewers. 31.10 miles of water pipe. Batavia has good fire and police departments. 14 churches, 13 hotels with capacity of 800 transients. 3 theatres.

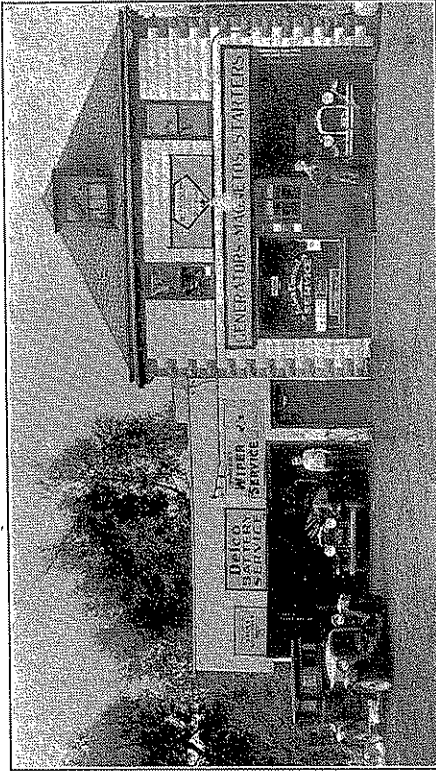
Automobiles and Agencies

Name of Car	Dealers	Address	Phone	Page
Chevrolet	Mancuso Chevrolet Co.	214 E. Main		top margins
Dodge Bros.	Funke & Hawley	306 W. Main	1780	14
Ford	Athoe Motors Inc.	W. Main c Lyon	1335	top margins
Fordson	Athoe Motors Inc.	W. Main c Lyon	1335	top margins
Lincoln	Athoe Motors Inc.	W. Main c Lyon	1335	top margins
Oldsmobile	Chas. Mancuso & Son	2-4-6 Main	907	28 & top margins
Packard	Chas. Mancuso & Son	2-4-6 Main	907	28 & top margins
Plymouth	Funke & Hawley	306 W. Main	1780	14

Automobile Batteries and Tires

Atlas	Batavia Auto Parts Co.	114 Walnut	81	alpha
Delco Batteries	Fenton's Electrical Service	225 W. Main	735	12
Firestone Batteries	Athoe Motors Inc.	W. Main c Lyon	1335	top margins
Firestone Tires	Athoe Motors Inc.	W. Main c Lyon	1335	top margins
Ford Batteries	Athoe Motors Inc.	W. Main c Lyon	1335	top margins
General Tires	Simon Clase & Son	15 Center	546-J	14
Goodyear Tires	Funke & Hawley	306 W. Main	1780	14
Goodyear Tires	Seacord & Slocum	562 E. Main	544	back cover
Miller Tires	Athoe Motors Inc.	W. Main c Lyon	1335	top margins
Monarch Batteries	Funke & Hawley	306 W. Main	1780	14
Perrin Batteries	Steberts Garage	15½ State	1689	14
U. S. L. Batteries	Chas. Mancuso & Son	2-4-6 Main	907	28 & top margins
United States Tires	Athoe Motors Inc.	W. Main c Lyon	1335	top margins
Willard Batteries	Simon Clase & Son	15 Center	546-J	14
Willard Batteries	Deverer Auto Electric	19 W. Main	205	13
Willard Batteries	Simonds Garage	1 Wiard	1693	13

R. F. FENTON AUTO ELECTRIC SERVICE



AUTOMOTIVE ELECTRICIANS

LOVEJOY SHOCK ABSORBER SERVICE

GENERATORS—MAGNETOS
STARTERS

DELCO AND EXIDE BATTERIES

225 W. Main Street

Phone 735

Devener Auto Electric

Willard
SPECIALIZED SERVICE

Specialized Service

GENERATOR, IGNITION, SPEEDOMETER
MAGNETO, STARTER, FUEL PUMPS

19 W. Main Street

Phone 205

SIMONDS GARAGE

E. J. SIMONDS, Prop.

DEPENDABLE AUTO REPAIRING

Parking and Filling Station

Sunoco—Kendall—Arrow—City Service and
Essolene

Gases and Oils

1 Wiard Street

Phone 1693



Pat's Auto Parts

R. O. Patterson, Prop.

Parts for All
Makes of Cars

*We Are Not Satisfied
Until You Are*

Phone 1181

27 Webster Ave.
BATAVIA, N. Y.

What Kind of a Car Will You Buy??

Who Sells It, and Where?

Find their name in the Classified Directory under
heading

Automobile Agencies

D O D G E

AND

PLYMOUTH

MOTOR CARS

FUNKE & HAWLEY

Day Phone 1780—Night Phone 1781

306 W. Main cor. Lyon BATAVIA, N. Y.

SIMON CLASE & SON

General and Yale

Tires and Tubes

ROAD SERVICE

15 Center St.



VULCANIZING

Phone 546-J

AMIDON'S GARAGE

HAROLD E. AMIDON, Prop.

General Automobile Repairs

WRECKING CAR SERVICE DAY AND NIGHT

CYLINDER HONING—OILS AND GREASES

19 N. Spruce Phone 472-J BATAVIA, N. Y.

SIEBERT'S GARAGE

AUGUST J. SIEBERT, Prop.

**GENERAL AUTO REPAIRING
AND TOWING**

DAY AND NIGHT SERVICE

Phone 1689

15½ State Street

BATAVIA, N. Y.

**The Batavia
Chamber of Commerce,
Inc.**

BATAVIA, N. Y.

A METROPOLITAN SERVICE

The Publishers of this Directory

H. A. MANNING CO.

have placed their

Free DIRECTORY Library

At the BATAVIA

CHAMBER OF COMMERCE ROOMS

65-67 MAIN STREET

OFFICERS

REV. W. C. KIRBY

President

C. P. WELLS

1st Vice President

H. E. HARROWER

2nd Vice President

J. S. McALPINE

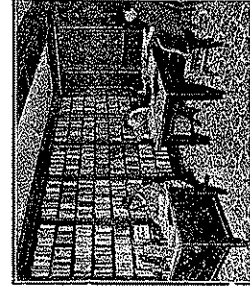
3rd Vice President

J. L. BEAN

Treasurer

ARTHUR E. MARTIN

Secretary



DIRECTORS

REV. W. C. KIRBY

C. C. BRADLEY, JR.

J. HODGSON

H. E. HARROWER

OLIVER A. CHURCH

JAMES L. BEAN

LOUIS WIARD

M. R. MILLER

JAMES J. GREEN

CLYDE F. WELLS

CLAUDE L. CARR

J. S. McALPINE

JOSEPH M. RYAN

These are official City Directories and are obtained by H. A. Manning Co. through their membership in the Association of North American Directory Publishers.

Consultation Free at Chamber of Commerce Rooms during office hours, 9 to 5 P. M. daily.

Saturdays, 9 to 12 A. M.

H. A. MANNING CO., Publishers

A. E. MARTIN

Secretary of Chamber of Commerce

The Churches

WITH A TOTAL OF EIGHTEEN, representing all the leading denominations, Batavia is well supplied with churches.

These noble edifices placed at intervals about the city add much to its attractiveness and charm.

It is the belief of many Batavians of vision that this full and adequate supply of churches is one of the greatest of the many resources of the city.

That for newcomers it is a factor that makes for the ready assimilation into the religious and social life of the community and hastens the time required to make citizens of the strangers who come to us.

The Church of today is the greatest of all institutions for the planting of good thoughts in the minds of the people and stands as the bulwark against degrading influences that surround us.

Therefore let us give a thought to these institutions that form so great a part of our city life and in visualizing our future greatness let us remember their value as

A Factor for Progress

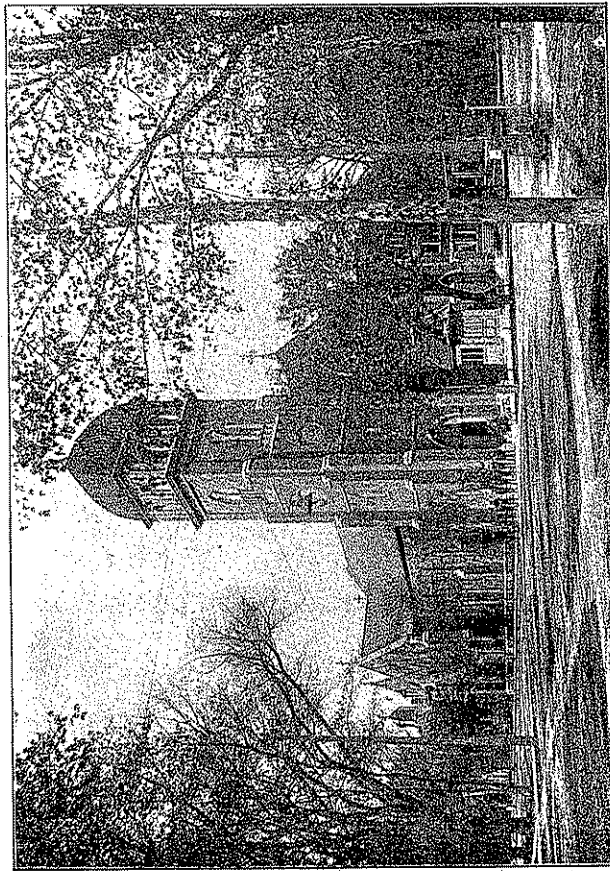
St. Joseph's Church

Main and Summit Sts. BATAVIA, N. Y.

Pastor, Rev. T. Bernard Kelly

Asst. Pastor, Rev. Leo F. Reddy

Rectory: 303 E. Main St. Phone 75



Masses on Sunday 7, 9 and 11 A. M.

Evening Service 7:45 P. M.

Weekday Mass 7:15 and 8:00 A. M.

Sacred Heart Church

(Roman Catholic)

POLISH

REV. STANISLAUS M. CICHOWSKI

Pastor

Phone 1796



Sunday Mass 8:00 A. M.
 High Mass with sermon 11:00 A. M.
 Week Day Mass 8:00 A. M.



Corner
 Swan and Sumner Streets

BATAVIA, NEW YORK

St. James' Church

BATAVIA, NEW YORK

ALANSON C. DAVIS, Rector

ALFRED BRITTIAN, Rector Emeritus



HOURS OF SERVICE

Sunday: Holy Communion 8:00 A. M.
 Sunday School 11:00 A. M.
 Morning Service 11:00 A. M.



St James' Parish is the Oldest Ecclesiastical Society in Batavia. The church is free and open. No rented pews. Open every day from 9 A. M. until 5 P. M. for devotion and meditation.

THE CHURCH IS FOR ALL AT ALL TIMES

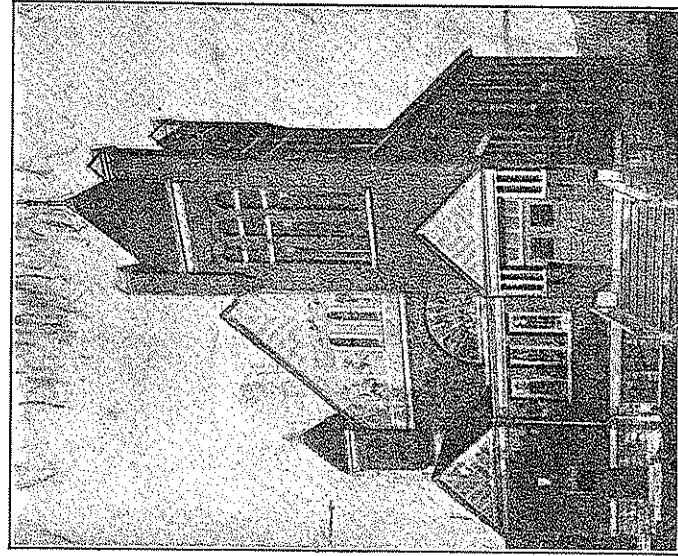
St. Paul's Lutheran Church

6 LIBERTY STREET

REV. PAUL HENRY NEMESCHY, Pastor

Residence: 112 Summit St.

Phone 752



SERVICES

Morning Worship

10:45 A. M.

Sunday School

12:00 M.

Evening Worship, during Lent only

7:30 P. M.

Scott & Bean

85 MAIN ST.

BATAVIA, N. Y.

Batavia's Store of Quality
Merchandise

Dry Goods

Ready-to-Wear

CARPETS—ARMSTRONG'S LINOLEUMS
CURTAINS

QUALITY CONSIDERED, PRICES LOWEST IN
THE CITY

McAlpine Brumsted & Co.

THE CLOTHIERS

LOOK BEFORE YOU LEAP BUT DON'T
BUY BEFORE YOU LOOK—WE CAN
SAVE YOU A SMART PENNY : :

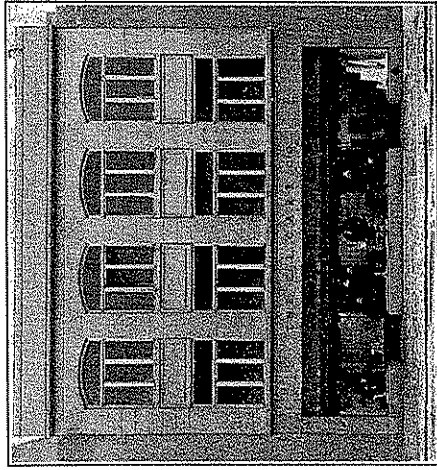
200 E. Main Street

BATAVIA, N. Y.

For Your Brand of Clothing
See These Classified Business
Headings:

*CLOTHING (BRANDS); *COATS; *CORSETS;
*DRESSES; *GLOVES; *HATS; *HOSIERY;
*OVERALLS; *SHOES; *SHIRTS AND
UNDERWEAR

Batavia's Largest Department Store



The C. L. Carr Co.

Department Store

E. J. BEARDSLEY CO., Inc.

HICKEY-FREEMAN ADLER-ROCHESTER

MICHAEL STERN & CO.

Suits and Overcoats

Bostonian Shoes

65 Main St. Phone 673-W BATAVIA, N. Y.

H. A. Manning Company

DIRECTORY AND MAP

PUBLISHERS

CITY COUNTY STATE

Public Schools

Board of Education meets in the West Main School on the first and third Fridays of each month.

Superintendent of Schools

CLYDE P. WELLS

Office Hours: School Days 3:30-4:30

Saturdays: 9:30-12:00

TELEPHONE 140

STATISTICS

1 Junior-Senior High School

7 Elementary Schools, 1 Library

REGISTRATION, Not Including Evening School

	1933-34	1932-33	1931-32
High School	1,282	1,280	1,122
Grades	2,294	2,413	2,424
	3,576	3,693	3,546

Genesee County Loan Association

BATAVIA - NEW YORK

Established 1879

OFFICERS

JOHN P. CASEY, President

EDWARD A. FRIEDLEY, Vice-President

LEE F. KINGDON, Secretary

JOHN C. PRATT, Treasurer and Manager

JAMES L. KELLY, Attorney

DIRECTORS

John P. Casey

James L. Kelly

Edward A. Friedley

George J. Glade

John C. Pratt

Bert H. Hanby

J. Stuart McAlpine

Laurence W. Griswold

N. J. Shulte

BATAVIA PURE ICE & STORAGE CO.
(Incorporated)

ALL

ICE

manufactured from

Pure Water

Manufacturers of

Double Distilled Water

Storage for Household Goods

and Merchandise

Phone 227

13 CENTRAL AVENUE

Pasteurized Grade 'A' Milk and Cream

GOLDEN FLAKE BUTTERMILK

PASTEURIZED GOLDEN GUERNSEY MILK

FARGO DAIRY, INC.

208 E. MAIN ST. Phone 483 BATAVIA, N. Y.

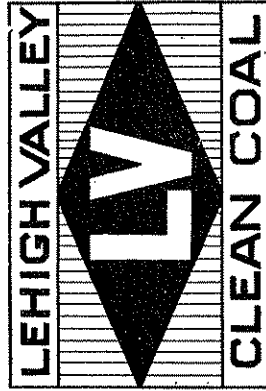
THE BEST ADVERTISING MEDIUM IS THE

CITY DIRECTORY

Because It Is Used The Most To Find Just Such Information
You Most Wish To Have The Public Know

FIRST—What line of goods you handle. **SECOND**—where you are located. Pick up a City Directory anywhere, and almost invariably you can tell who the progressive, up-to-date merchants and professional men are. There are many brands of clothing, shoes, dry goods, groceries, etc. and some prefer one kind, some another. What better place to state your special brands than in the City Directory?

The Coal That Satisfies



FRANK THOMAS

Office 68 Jackson Street—Phone 439

Coal Elevator 68 Jackson Street—Phone 439

BATAVIA

NEW YORK

LUMBER, DOORS, SASH, MILL WORK, ROOFING

Batavia Lumber & Coal Co.

B. H. HANBY, Prop.

Retail Building Supplies

Cement Lime Brick Flue Lining Plaster Paris
22 EVANS STREET BATAVIA, N. Y.

WE SHOULD BE PLEASED TO RECEIVE YOUR ORDER FOR

ANTHRACITE COAL
BITUMINOUS

SEMET-SOLVAY COKE

M. E. LOWE

28 Swan St.

Phone 553-W

BATAVIA, N. Y.

Hartley's Undertaking Parlors

Grace, Dignity and Sympathetic Understanding make it especially desirable for all to use this home in time of bereavement.

DAY AND NIGHT SERVICE

CAPABLE ATTENDANTS

Charles W. Hartley, Director

JAMES H. BROWN, Assistant

Res. 1 Union Street

Phone 583-W

5 Bank St.

Phone 76 BATAVIA, N. Y.

McClellan Furniture and Piano Studios

Specializing in High Quality Furniture and Pianos

Pianos Tuned and Factory Reconditioned

Floor Lamps, Rugs, Dining Room Suites, Bed Room Suites, Tables, Beds and Mattresses

101 Bank St. cor Washington Ave.

Phone 1710

When in a Strange City

Batavia people can ascertain the information about fraternities of which they are members at home. It is a distinctive service, but the Directory renders many distinctive services.

Put your Club in this section so that visiting members of the same order may find your welcoming sign in the

BATAVIA DIRECTORY

HOTEL RICHMOND

RUSSELL A. MORTON, Lessee and Manager

*Leading Hotel Between
Buffalo and Rochester*

Radiant with Friendliness

MAIN COR. COURT STS. BATAVIA, N. Y.

**PIEHL HARDWARE
GENERAL HARDWARE****STOVES, FURNANCES and TINSMITHING**

REPAIRS FOR CASE

E-B OSBORNE

AND GENERAL REPAIRS
FOR FARM MACHINERY

86 Main Street

Phone 1436

LOWE BROTHERS
PAINTS, VARNISHES
AND PAINTERS'
SUPPLIES**Chas. Mancuso & Son, Inc.***General Hardware*Paints, Oils and Glass, Stoves, Ranges and Furnaces, Maytag
Electric Washers, General Electric Radios, Hot Point Re-
frigerators

322 Ellicott Street

Phone 584

The Progressive Business ManWho Continually Informs The Public Regarding
The Details of His Service Through These Pages
Has The Spirit and Policy Which Insures His
Customers Satisfaction And Reliability.**Patronize Him****FRANK A. LOWN CO.****INSURANCE**

FIRST NAT. BANK BLDG.

Phone 160

Green & Sanders

REAL ESTATE

INSURANCE

Woolworth Bldg.

Phone 500

The S. V. Maney Agency**INSURANCE**

"All Travelers' Lines"

Masonic Temple

Phone 972

BATAVIA, N. Y.

Redfern Terrace

THE BEST PLACE FOR YOUR NEW HOME

HOMES \$2,000 and up.

Lots cut 75%

VETERAN'S HOSPITAL ATTENTION

R. A. HARVEY

New Home Site Developer

Phone 199

4 Ellsworth Avenue

COURTS

CITY COURTS

Judge—John B. Greeley
Stenographer—Thelma L. Dawson

COURT OF APPEALS

Chief Judge, Cuthbert W. Pound,
Lockport; Associate Judges,
Leonard C. Crouch, Irving Leh-
man, New York City; Frederick E.
Crane, Brooklyn; Henry T. Kel-
logg, Valcour; John F. O'Brien,
New York City; Irving G. Hubbs,
Pulaski

COURT OF CLAIMS

The Court of Claims (restored by
Laws of 1915) is required to hold
eight sessions each year, un-
less otherwise ordered by the
Court.

Judges—James J. Barrett, pres.
Judge, Syracuse, 1939; Fred M.
Akerson, Niagara Falls; James A.
Parsons, Hornell; Owen L. Potter,
Albany; Bernard Ryan, Albion

GENESEE COUNTY COURT

Judge—Newell K. Cone
Clerk—Russell C. Annabal

GENESEE COUNTY SUPREME COURT

Justice Samuel J. Harris—(Jury and
Equity) Feb. 5th to 17th
Justice Clarence MacGregor—(Jury
and Equity) May 7th to 19th
Justice Almon W. Lytle—(Jury and
Equity) Oct 1st to 27th
Special Terms Naturalization of
aliens, May 7th, 2 p m, Oct. 1st
2 p m, Justice MacGregor presides.
Oct 1st 2 p m, Justice Lytle pre-
sides

PRESIDING

Hon. Newell K. Cone, County
Judge. Officers of the Court—
William J. Neville, District Att'y;
William H. Weller, Sheriff; Herbert
L. Snyder, Under Sheriff; Russell
C. Annabal, Clerk; Charles Miller,

Deputy Clerk; Albert Richard,
Crier. Justices in Eighth Judicial
District: Hon. Charles B. Sears,
Buffalo; Hon. Harry L. Taylor, Buf-
falo; Hon. Alonzo G. Hinkley, Buf-
falo; Hon. John V. Maloney, Buf-
falo; Hon. Clinton T. Horton, Buf-
falo; Hon. Harley N. Crosby, Fal-
coner; Hon. James E. Norton, War-
saw; Hon. Parton Swift, Buffalo;
Hon. George A. Larkin, Olean; Hon.
Samuel J. Harris, Buffalo; Hon. Al-
mon W. Lytle, Buffalo; Hon. Tho-
mas H. Noonan, Buffalo; Hon.
Clarence MacGregor, Buffalo; Hon.
Bernard B. Ackertman, Belmont

SURROGATE'S COURT

Judge—Newell K. Cone
Clerk—Mrs. Grace A. Laird

UNITED STATES DISTRICT COURT

(Western District of New York)
District Judges: Simon L. Adler,
Rochester; John Knight, Ar-
cade; Clerk, May C. Sickmon,
Buffalo; U. S. Marshall, Joseph
Fritsch Jr., Rochester. Referees
in bankruptcy: George W. Bab-
cock, Batavia; James W. Parsons,
Buffalo; Nelson P. Sanford, Ro-
chester; Joseph C. White, Dun-
kirk; George D. Judson, Lock-
port; U. S. Attorney, Richard H.
Templeton, Buffalo; U. S. Com-
missioner, Frank W. Ballard,
Batavia

UNITED STATES SUPREME COURT

Chief Justice, Charles Evans Hughes,
New York; Associate Justices,
Benjamin N. Cardozo, New York;
James C. McReynolds, Tennessee;
Louis D. Brandeis, Massachusetts;
Willis VanDeVanter, Wyoming;
George Sutherland, Utah; Pierce
Butler, Minnesota; Harlan F.
Stone, New York; Owen J. Roberts,
Pennsylvania; Clerk, Charles El-
more Cropley; Marshal, Frank K.
Green, Kentucky.

FRANK W. BALLARD

LAWYER

Phone 699

39 Jackson Street BATAVIA, N. Y.

WILLIAM H. COON

Attorney-at-Law

CITY ATTORNEY

Office Phone 891-W Res. Phone 1633

51 MAIN STREET BATAVIA, N. Y.

WILLIAM J. DARCH

GLADSON P. TRIMBLE ROBERT E. NOONAN

ATTORNEYS-AT-LAW

Phone 1776 Res. Phone 1299

206 EAST MAIN STREET BATAVIA, N. Y.

Kelly & Davison

JAMES L. KELLY

Res. Phone 1292

WALTER J. DAVISON

Res. Phone 1866

ATTORNEYS-AT-LAW

Attorney For Genesee County Loan Association

112 MAIN STREET BATAVIA, N. Y.

Stedman & Waterman

Attorneys and Counsellors-at-Law

Bayard J. Stedman: Office Phone 812, Res. Phone 90

Albert J. Waterman: Office Phone 812, Res. Phone 1324

8-9-10 Masonic Building BATAVIA, N. Y.

GEORGE W. WATSON

Attorney-at-Law

Phone 304

53 MAIN STREET

BATAVIA, N. Y.

Directory Advertising Pays

TRY GOOD, INFORMATIVE COPY IN THE CITY
DIRECTORY AND SEE FOR YOURSELF THE

RESULTS IT WILL BRING YOU
CATALOG YOUR PRODUCTS

For Rates, Write

H. A. MANNING COMPANY

514 Wedgeway Building, Schenectady, N. Y.

98 Park Place, New York, N. Y.

33 Lyman Street, Springfield, Mass.

537 Congress Street, Portland, Maine

MANUFACTURERS

Like most growing cities of the United States the foundation of wealth and greatness rests on the industrial situation of the city. Varied industries supply constant work for contented workers. If one industry is quiet another may be booming. Batavia's growth has been steady and business conditions near to normal because of the varied line of manufactured products made here. These factories are well situated with wide spaces for additional building room. Batavia promises a great industrial future. These industries have flourished because of advantageous transportation facilities, and healthy residential conditions.

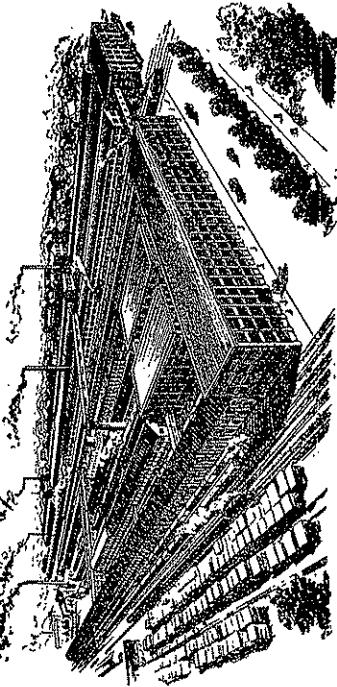
Agricultural implements are manufactured extensively, locomotives repaired, shoes, wood working, boxes, dies, wall board, labels, seals, levers, transmission controls, flavoring extracts, brooms, harvest machinery, milling machines, cream separators, threshing machines, floor polishes, proprietary medicines, metal specialties, tin ware and die castings of all sorts, fruit and vegetable canning, tires, shell novelties, shirts, clothing, ventilators.

There are close to three thousand (3,000) employed in Batavia's industrial plants. The output is more than ten million dollars (\$10,000,000) annually. Batavia is not subject to business depressions to the extent that most cities are. It has experienced no labor troubles and relations between employer and employee are especially pleasant.

**THERE ARE FORTY-FIVE MANUFACTURING
INDUSTRIES LOCATED HERE AND ALL ARE
GROWING**

For further information about Batavia write the publishers of this Directory or the Batavia Chamber of Commerce. There are factory sites with all advantages located on any of the three trunk line railroads entering the city.

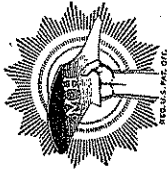
Batavia's Largest Industry



THE MASSEY-HARRIS COMPANY INCORPORATED

COMPLETE MODERN FARMING EQUIPMENT

- | | |
|--------------------------------|-------------------------------------|
| TILLAGE | HAYING |
| Tractor Plows | Movers |
| Riding Plows | Side Rake and |
| Walking Plows | Rakes |
| Disc Harrows (horse drawn) | Tedders |
| Tractor Harrows | Sweep Rakes |
| Power Lift Discs | Loaders |
| Spring Tooth Harrows | |
| Spike Tooth Harrows | HARVESTING |
| Rotary Hoes | Reaper-Threshers |
| Soil Pulverizers | Binders |
| | Tractor Binders |
| | Headers |
| | Windrow Harvesters |
| | Reapers |
| | Corn Binders |
| | Ensilage Cutters |
| PLANTING AND SEEDING | MISCELLANEOUS FARM EQUIPMENT |
| Corn Planters and Drills | Manure Spreaders |
| Cotton Planters | Farm Wagons and Trucks |
| Cotton Listers | Cream Separators |
| Potato Planters | Stalk Cutters |
| Transplanters | Tractor Hitches |
| Grain Drills | Orchard and Potato Sprayers |
| Fertilizer Drills | Potato Diggers |
| 2 and 3 Row Tractor Listers | Hammer Type Feed Mills |
| | Orchard and Vineyard Tools |
| CULTIVATING | |
| Walking Cultivators | TRACTORS |
| Shovel Cultivators (riding) | 20-30 h. p. } 2 Wheel |
| Disc Cultivators (riding) | 12-20 h. p. } Drive |
| Two-Row Cultivators | General Purpose—4 Wheel Drive |
| Listed Corn, 2 and 3 row types | with all Row Crop Attachments |
| Field Cultivators | |



SINCE

1847

Factories at Racine, Wis., Batavia, N. Y.
General Offices: Racine, Wisconsin
EASTERN BRANCH, BATAVIA, N. Y.

BATAVIA HOSPITAL

UNDER THE MANAGEMENT OF

The Women's Hospital Association
NORTH AND SUMMIT STREETS
BATAVIA, N. Y.

*Quick
Ambulance Service
Phones 30 and 31*

TRAINING SCHOOL IN CONNECTION
MISS EMMA J. KEATING, R. N.
Superintendent of Nurses

Taxi Service May Be Obtained
From All Trains to the
Hospital

ST. JEROME HOSPITAL

14-18 Bank St.

BATAVIA, NEW YORK

Telephone

782

For Ambulance Service
Booth Phone 1234

VISITING HOURS:

2 to 5 P. M.

7 to 9 P. M.

OUT-OF-TOWN INQUIRIES SHOULD BE
ADDRESSED TO THE SUPERINTENDENT

45,000 People Read

The Daily News

You can reach these
people any day with a
classified advertisement
for only a few cents.

Results from classified advertising are invariably satisfactory.

TELL YOUR STORY WITH A WANT AD

The Batavia Daily News

23-25 Jackson Street

BATAVIA, N. Y.

MANNING'S
Batavia Alphabetical Directory

1934

Copyright 1934, by H. A. Manning Co.

PUBLISHERS' NOTICE
 The information in this directory is obtained as far as possible by actual canvass and is compiled in a way to insure maximum accuracy. While the publishers will in no way be held responsible for any errors that may occur, they will be pleased to have any inaccuracies called to their attention, for correction in succeeding editions.

TO FIND A NAME YOU MUST KNOW HOW TO SPELL IT

There are many ways of spelling some names with practically the same pronunciation

Abbreviations—In the following pages: appr, apprentice; av, avenue; blk, block; bkpr, bookkeeper; bldg, building; com trav, commercial traveler; c, corner; ct, court; do, ditto; emp, employed; h, house; mach, machinist; mech, mechanic; mls, miles; n, near; opp, opposite; pkwy, parkway; pl, place; rd, road; sq, square; rem, removed; r, rooms; sten, stenographer; supt, superintendent; treas, treasurer; ter, terrace; R D, rural delivery; E, East; N, North; S, South; W, West

- B L & C Co
- Batavia Lumber & Coal Co
- B & N Y W W Co
- Batavia & New York Wood Working Co
- B P I & S Co
- Batavia Pure Ice & Storage Co
- B Spec Co
- Batavia Specialty Co
- B T Pub Co
- Batavia Times Publishing Co
- Con Equip Corp
- Contractors Equipment Corp
- D D C Co
- Doehler Die Casting Co
- F A Co
- Ferguson-Allan Co
- H-R Co
- Hickox-Rumsey Co
- J H & Sons
- Joseph Horowitz & Sons
- L V R R
- Lehigh Valley Railroad
- L St L & C Co
- Liberty St Lumber & Coal Co
- F E M & Sons
- F E Mason & Sons
- M-H Co
- Massey-Harris Co
- Met Life Ins Co
- Metropolitan Life Insurance Co
- P W M & Son
- P W Minor & Son
- N Y C R R
- New York Central Railroad
- N Y S S B
- New York State School for the Blind
- N L & O P Co
- Niagara Lockport & Ontario Power Co
- R E C Mfg Wks
- The R E Chapin Manufacturing Works
- R L H & P Co
- Republic Light, Heat and Power Co
- E N R Co
- E N Rowell Co
- S O Co
- Standard Oil Co
- W P Co
- Wiard Plow Co

- ABBEY NORMAN S (Muriel J), asst mgr J C Penney Co, h 141 Elm
- Abbott Dorothy L, r 18 Manhattan av
- " Harry L (Mary Lee), emp Climax Corp, h 18 Manhattan av
- " Ruth L, student, r 18 Manhattan av
- Acheson George (Edna L), (Acheson's), h 27 Harvester av
- " Harry A (Margaret), (Acheson's), h 27 Harvester av
- Acheson's, (Harry A and George Acheson), body, fender and radiator repairing 27 Harvester
- Acker Anna M, wid George H, h 28 Montclair av
- " George J, supt E N R Co Factory No 2, r 28 Montclair av
- Ackerson George R (Florence), emp state highway dept, r 13 Tracy av

DR. W. D. BENNETT
VETERINARIAN

Office and Hospital 208 State Street Phone 32
 Residence, 208 State Street Phone 32
 BATAVIA, N. Y.

Of Course

ADVERTISING COSTS MONEY

One of the stock alibis of persons who do not advertise or register their business strongly in the Directory is that advertising is an expense.

Of course it is. So is window trimming, lighting, heating, telephone service, postage, rent, cost accounting, price tags and almost everything else that helps to sell merchandise or service.

Yet no business man attempts to get along without these necessities. And most of them are advertising in one form or another.

Attractive windows are effective advertising only to those who pass the merchant's place of business. An inviting interior, good lighting arrangement and price tags reach only those who come through the door.

But no merchant who wants to maintain even his present volume of business, to say nothing of increasing it, can hope to continue for very long, in the face of advertised competition without some aggressive program to attract NEW customers—and when getting them also serving them with a directory handy for use.

Of course it costs money to advertise. But it may easily cost more money to lose that volume of business which is necessary to operate at a profit.

An intelligently planned and executed advertising campaign in the City Directory is within the reach of almost every merchant, professional man and institution. The City Directory is used millions of times annually, and costs less than one thousandths of a cent per user, the least expensive publicity ever devised.

40 1934—BATAVIA DIRECTORY—1934

- Ackerson Raymond G (Eleanora E), mach Climax Corp, h 6 Tracy av
Ackert Daniel H (Catherine M), retired, h 21 Prospect av
Ackes Edward F (Elizabeth G), salesman, r 80 Main
ADAM, MELDRUM & ANDERSON CO dept store 400 Main, Buffalo, see top margins
Adamowski Frank, baker 208 Swan, r do
Adams Anna W, dom 54 Tracy av, r do
" Arthur K, emp D D C Co, r 116 State (2)
" Charles (Cecelia T), lab, h 12 Colorado av
" Fannie M, h 160 State
" Harry, sgt state police, r 669 S Main
" John R Rev, pastor W Barre, h 160 State
" Lena Mrs, hskpr 417 E Main, r do
" Lillian C, teacher Brooklyn School, r 25 Montclair av
" Mae E, h 11 Highland pk
" Mary, wid Eusign L, r 38 Tracy av
" Minnie M, wid Newton B, chiropradist 10 Bank, h do
Adelman Edna C (Mrs H Wilfred), emp Adelman's, h 27 Manhattan
**ADELMAN ELMER B (A Lucille), prop Adelman's and radio store and refrigera-
tors 208 E Main, h 6 Lyon, see back cover**
" H Wilfred (Edna C), emp 208 E Main, h 27 Manhattan av
" Henry B (Minnie L), clk 208 E Main, h 21 School
ADELMAN'S Elmer B Adelman prop, conf 208 E Main
Ademy Clifford B (Pauline B), salesman Genesee Lumber & Coal Co, h 4
Davis av
Aderman W Price (Dorothy E), teacher B H S, h 235 Bank
Adsit Doris I, student, r 125 Summit
" Herbert R (Cornelia M), chief eng B H S, h 125 Summit
ADSIIT WILLIAM H (Floy), supt Batavia Metal Products Corp, h 100 Summit
Ager Gregory A (Mimerva A), engraver F E M & Sons, h 15 Thomas av
" J Lockwood (Irene E), v-pres Techni-Seal, h 31 Montclair av
" Sarah M, wid John, r 31 Montclair av
Agnew Duncan (Rose), lab, h 14 Hutchins pl
" Thomas, emp Colgrove & Ryan, r 14 Hutchins pl
Agresto Mary M, wid Vito, r 29 Central av
" Mildred, opr J H & Sons, r 29 Central av
" Victor H, r 29 Central av
Ahl Charles F (Jeannette L), emp D D C Co, h 32 Pringle av
Albee Marian B, dom 20 Ross, r 206 Liberty
" Newell E, truck driver, r 206 Liberty
" Ida B, dom, r 206 Liberty
" Irving E, student, r 206 Liberty
ALBERTY DRUG CO Guy W Alberty prop, 122 Main
ALBERTY GUY W (Olga), prop Albery Drug Co, h 107 North
ALBERTY OLGA (Mrs Guy W), pharmacist Albery Drug Co, h 107 North
Albone William M (Carrie E), lab, h 4 Wood
Albright Evelyn M, student, r 162 Ross
" Otis I (Mabel B), teacher B H S, h 162 Ross
Albro Helen E, teacher B H S, r 215 Washington av
Aldridge Matilda E, wid Lewis K, h 125 Union
" Minnie A, wid Watson L, h 24 Oak
Aldino Guisepp, prop Sanitary Barber Shop, r 15 Swan
Alessi Felix J (Hazel S), emp Rochester, r 15 Highland pk
" Hazel S (Mrs Felix J), opr J H & Sons, r 15 Highland pk
Alexander Harvey (Bernice), emp B Times, r 415 E Main
" J Howard (Zeida F), mech Blue Bus Lines, h 76 S Main
Alfieri Anna, opr E N R Co, r 20 Maple
" John (Lucy C), emp B & N Y W Co, h 403 Ellicott
" John (Mary S), emp N Y C R R, h 20 Maple
" Joseph, r 20 Maple
" Samuel, emp N Y C R R, r 20 Maple
" Thomas, lab, r 20 Maple
Alford Lina, wid Lineaus, h 13 Tracy av
Alger Elmer L (Corra), chief eng N Y S S B, h 111 North
" James E (Margaret), bkpr Bank of Batavia, r 111 North

GENESEE LUMBER & COAL CO., Inc.
'blue coal' Seme t-Solva y Coke | Phone 364

1934—BATAVIA DIRECTORY—1934 41

- ALL BATAVIA FUND INC pres, Louis Wiard; v-pres, C C Bradley Jr; treas, H T
Perfield; sec, A E Martin, 65-67 Main**
Allan Frederick W (Jessie W), pres Contractors Machinery Corp, h 42 Elli-
cott av
" Robert G (Cecelia M), gen mgr Contractors Machinery Corp, h 230 Bank
Alland Helen L Mrs, h 305 School
" James, U S A, r 305 School
" Theodore, r 305 School
Allen Edward B (Louise F), foreman P W M & Son, h 57 Vernon av
" Eleanor A, student, r 40 S Main
" Elsie C, wid George M, h 2 Lehigh av
" F A Granite Co Inc, monuments 522 E Main, pres, Frank A Allen; rep,
William Dickey
" Florence A, nurse St Jerome's Hosp, r 337 W Main
" Frank A, pres F A Allen Granite Co, res Mount Morris
" Howard, emp Blue Bus Lines, r 8 Porter av
" J Gilbert (Anna A), prop Home Dairy Co and Home Dairy Cafeteria, h
24 Vernon av
" Lester, emp 26 Bank, r do
" Lyle, stock clk W T Grant Co, r 420 E Main
" Merritt N (Cecelia E), sheet metal wkr Elba, h 40 S Main
" Nina M, clk R E C Mfg Wks, r 9 Olin av
" Sarah E, r 5 Chestnut
" Thelma E, emp Home Dairy Co, r 24 Vernon
" Warren A Jr (Pearl I), tinsmith R E C Mfg Wks, h North ext
Allenza Antonio (Frances B), lab, h 16 Central av
" Frank, retired, h 17 Highland pk
" Frank, r 16 Central av
" Jenny, r 17 Highland pk
" Louise A, student, r 16 Central av
" Madeline L, student, r 16 Central av
" Mary F, clk F W Woolworth Co, r 16 Central av
" Nancy J, clk F W Woolworth Co, r 16 Central av
Alley Julia, wid John, r 8 Lewis pl
ALMOND WALTER (Rose), purchasing agt Doehler Die Casting Co, h 238 Bank
Alpaugh Amy C, teacher Pringle School, r 125 W Main
Alvord Phineas (May A), h 19 Cedar
Amarée Joseph, lab, r 62 Swan
Amatrano Carmella A, student, r 21 Colorado av
" James, student, r 21 Colorado av
" Salvatore (Anna C), emp city, h 21 Colorado av
American Candy Kitchen, J George Copoulos prop, 26 Jackson
" Legion—see Veteran Military Organizations
" Legion Dept of New York, Genesee County headquarters, Genesee County
Service Bureau, Harry E Morissey Genesee County Am Legion
liaison officer, Legion rooms, Municipal bldg
" Legion Rooms, Municipal bldg, 1-17 W Main
" Restaurant, Mrs Louise M Van DeBogart, 50 Jackson
" Telephone & Telegraph Co, Harold H Sonne chief test board man, 27
Jackson
Ames Charles E (Fannie R), janitor N L & O P Co, h 17 Trumbull pkwy
" Irving D (Edith M), foreman M-H Co, h 22 Porter av
" R Alan, emp Rochester, r 22 Porter av
Amidon Carl F, lab, r 38 S Main
" Carrie L, wid George, r 8 S Main
" Florence E, wid Elmer O, h 38 S Main
**AMIDON HAROLD E (Margaret M), prop Amidon Riding Academy and prop
Amidon's Garage, h 19 N Spruce**
" Herbert L (Grace M), plumbing 22 S Main, r do
" Howard E, lab, r 38 S Main
AMIDON RIDING ACADEMY Harold E Amidon prop, rear 641 E Main
**AMIDON'S GARAGE Harold E Amidon prop, general auto repairing and wreck-
ing service 19 N Spruce, see p 14**
Amru Joseph, lab, r 62 Swan

Funeral Directors

H. E. TURNER & CO., Inc.

211 E. MAIN STREET PHONE 68

1934—BATAVIA DIRECTORY—1934

- 42
- Anastasio Mary, emp E N R Co, r 133 Liberty
 - " Salvatore, emp M-H Co, h 133 Liberty
 - Anawald Howard L (Florence M), lab, h 5 1/2 McKinley av
 - Anderson Elmer F, private state police, r 669 E Main
 - " Helen M, bkpr B P I & S Co, r 201 Washington av
 - " James E (Monica), clk M-H Co, r 100 Ross
 - " Katherine E, wid Everett, h 27 Summit
 - " Ruth, dom 20 Summit, r do
 - " Thomas W (Margaret E), foreman M-H Co, h 3 Seneca av
 - Andrews Agnes S, r 209 Washington av
 - " Alden D, emp P W M & Son, r 213 Ross
 - " Bernice S (Mrs Henry W), sten 206 E Main, h 111 Washington av
 - " C Fred (Susan), auto storage rear 2 Court, h 6 Washington av
 - " Charles F, Jr (Gertrude L), printer P W M & Son, h 37 Manhattan av
 - " Chester, lunch stand P W M & Son, r 28 Seaver pl
 - " Gertrude L (Mrs Charles F, Jr), emp P W M & Son, h 37 Manhattan av
 - " Harvey A, watchman N Y S S B, h 23 North
 - " Henry W (Bernice S), salesman 46 Main, h 111 Washington av
 - " Jesse H, asst L Lee Mulcahy, h 28 Seaver pl
 - " Montagu, private state police, r 669 E Main
 - " Robert M (Margaret E), emp C Fred Andrews, r 6 Washington av
 - " Vernie (Ruby) baker I Prospect av, h do
 - Annabal (Charles B (Polly E), supt Grand View Cemetery, h Clinton at limits
 - " Russell C, county clk, r Clinton at limits
 - Annis Frank L (Mabel), painter, h 4 N Spruce
 - " Joshua, r 4 N Spruce
 - " Myrtle I Mrs, teacher Washington School, h 46 Vernon av
 - Anthony Eve M (Mrs Joseph), sten Steadman & Waterman, res R D 1
 - Antignani Anthony (Elizabeth A), lab, h 53 Swan
 - Antinore James (Teresa), lab, r 5 Sumner
 - Antis Nellie H, wid Daniel H, r I Ferren pl
 - Anzalone James, student, r 415 Ellicott
 - " Mary J, emp J H & Son, r 415 Ellicott
 - " Rose M, wid Salvatore, h 415 Ellicott
 - Anzovin Thomas, lab, r 26 Bank (7)
 - Appleby Helen, teacher, r 18 Tracy av
 - Appleton Fred R (Corra S), retired, h 8 Vine
 - Aquino Andrew (Bridget M), lab, h 9 Watson
 - " Frank (Mary F), lab, h 105 Evans
 - " Fred T (Josephine A), lab, h 149 Jackson
 - " Nicholas, h 62 Swan
 - " Rose, r 62 Swan
 - Sebastian, r 62 Swan
 - Aramino Fannie R, student, r 125 Hutchins
 - " Floyd L (Laura M), lab, h 150 Jackson
 - " Irene R, emp J H & Sons, r 125 Hutchins
 - " John, lab, r 125 Hutchins
 - " Nicholas (Mary T), lab, h 125 Hutchins
 - Arasimowicz Antoinette M, wid Alexander, h 9 William
 - Argulski John H (Helen B), retired, r 5 Otis
 - " John J (Genevieve A), lab, h 50 Otis
 - " Raymond J (Rose B), prop Mileage Gas Station, h 340 Ellicott
 - Ariemma Alexander (Jennie), retired, h 72 Clifton av
 - " Christine C, opr J H & Sons, r 72 Clifton av
 - " Rose M, r 72 Clifton av
 - Armbruster Marguerite, student, r 137 Bank
 - Armour & Co, Charles L Francis mgr, wholesale meats 108 Ellicott
 - ARMSTRONG ALLEN A optometrist Woolworth bldg, r 314 Washington av**
 - " Austin J, lab, r 50 Ellicott
 - " Frank H, billiards 39 Jackson, r 147 Bank
 - " John, lab, r 50 Ellicott
 - Arnett Gertrude, nurse B Hosp, r do
 - Arnold Dorothea, nurse B Hosp, r do
 - " Esther, wid John, h 110 East av
 - " Harry E (Margaret E), signal maintainer L V R R, h 23 Ellicott av

Adam, Meldrum & Anderson Co.

"BUFFALO'S GREATEST STORE"

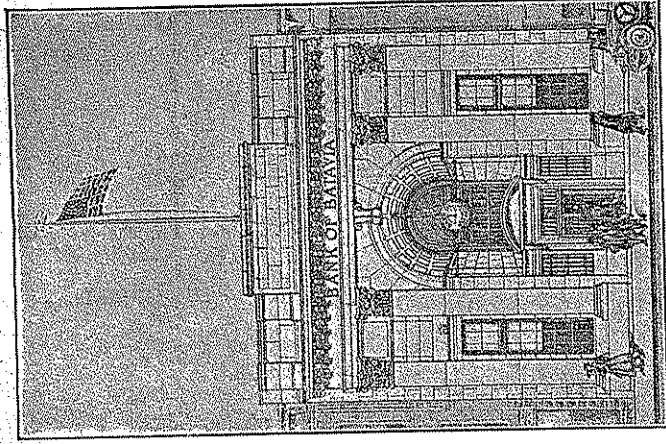
1934—BATAVIA DIRECTORY—1934

- 43
- Arras Albert B (Myrtle C), eng B P I & S Co, h 5 Chase pk
 - " James B, r 5 Chase pk
 - " Millard A, r 5 Chase pk
 - Artman Elmer H (Marion F) (McMannis & Artman Agency), r 107 Bank
 - Ashe Harry J (Lena G), chauffeur L C Stroh & Sons, h 105 W Main
 - " John L (Irene E), truck driver Gen Ice Cream Corp, h 55 Kingsbury av
 - " Mary R, wid John, r 34 Tracy av
 - Ashley Rhena Mrs, office sec Farm Credit Administration, res N Berger
 - Ast Martha O, clk, r 27 Seaver pl
 - At the Sign of the Printing Press (Carrie L and Anna Belle Sanders), books and rental library 114 Ross
 - ATHOE FRIEDA H (Mrs Harold W), sec Athoe Motors Inc, h 15 Hart**
 - ATHOE HAROLD W (Frieda H), pres-treas Athoe Motors Inc, h 15 Hart**
 - ATHOE MOTORS INC Ford and Fordson sales, parts and service and United States Tire distributor 301 W Main c S Lyon, pres-treas, Harold W Athoe; v-pres, William G Athoe; sec, Mrs Frieda H Athoe, phones 1319 and 473-R, see top margins**
 - ATHOE WILLIAM G v-pres Athoe Motors Inc, res Ridgeway, Ont, Canada**
 - Atkinson Joseph (Sarah), lab, h 21 Colorado av
 - Atlantic Refining Co Inc, John O Potter mgr, gas and bulk plant Clinton; gas station, Edward P Verbridge & Son mgr, 401 W Main
 - " & Pacific Tea Co The Great, William Johnson mgr, 106 W Main; Everett E Smith mgr, 17 Jackson; Henry A Richards mgr, grocery dept, George N Tock mgr meat dept, 43 Main; Teofil J Perkowski mgr, 328 Ellicott; Raymond N Krewer meat dept mgr, Ralph N Johnston grocery dept mgr, 214 E Main
 - Attardi Alfonso, emp M-H Co, r 432 Ellicott
 - " Dominick (Verena M), emp E N R Co, h 432 Ellicott
 - " Joseph J (Lucy C), salesman, r 24 Hutchins
 - ATWATER EDWARD P (Rowena W), asst cashier-trust officer First National Bank, h 18 Ross**
 - Atwood John T, psychologist Attica, h 26 Bank (6)
 - Audamy George (Edith B), asst supt public works, h 26 Trumbull pkwy
 - Augram Bernice D (Mrs Robert Z), cook 20 Jackson, h 229 Bank
 - " Robert C, student, r 229 Bank
 - " Robert Z (Bernice D), lunch car 20 Jackson, h 229 Bank
 - Auph Elliott R, emp P W M & Son, r 28 Franklin
 - Aupperle Max K (Hedwig), tailor stop 61 Main, h 8 North
 - Avery Charles C (Edith M), pres B Produce Co, h 63 Ellicott av
 - " Hobart R (Suzanne O), bkpr Elba, h 19 Lincoln av
 - " Spencer G, student, r 63 Ellicott av
 - Avino Antoinette J, emp J H & Sons, r 10 Hutchins
 - " Pasquale M (Anna), emp M-H Co, h 10 Hutchins
 - Ayers Alfred (Sarah A), emp E N R Co, h 50 Tracy av
 - " J Edwin (Myrtle), chauffeur G Leon Schultz, h 25 Seaver pl
 - Azzi Leo (Mary), lab, h 146 Hutchins
 - BABBAGE ALDEN M (Lillian M), linotype opr B T Pub Co, h 100 W Main**
 - Babcock George W (Mary E F), attorney 106 Main, h 27 Summit
 - " Gilbert R (Mary E), mach M-H Co, h 122 Elm
 - " Sherman F, student, r 27 Summit
 - Bachorski Chester (Pauline L), lab, r 9 William
 - " Edward, lab, r 9 William
 - " Frances, r 9 William
 - Bachulak Charles (Jennie M), moulder M-H Co, h 437 S Jackson
 - " Charles Jr, lab, r 437 S Jackson
 - " Helen, dom, r 437 S Jackson
 - Bachus Alice, physical training teacher public schools, r 8 East av
 - " Jane, shoe opr P W M & Son, r 317 E Main
 - " Jane, shoe opr P W M & Son, r 317 E Main
 - Bacon Arthur B (Marguerite A), industrial promotion, h 11 East av
 - " Clair D, student, r 11 Jackson
 - " Clara I Mrs, waitress N Y S S B, h 11 Jackson
 - " John W (Hannah M), lineman N L & O P Co, h 59 Lyon
 - " Laverne, student, r 11 Jackson

44 1934—BATAVIA DIRECTORY—1934

- Bacon Mary C, wid Charles W, h 6 Buell
 " May E, emp F E M & Sons, h 124 Main
 Bagnato Vincenzo (Marianna C), h 7½ Hutchins
 Bailey Elizabeth R, r 41 Tracy av
 " George W Jr (Emeline M), (Jones Shop On Wheels), r 144 Harvester av
 " George W Sr (Mary I), lab, h 33 Columbia av
 " J Howard (Mary E), shipping clk Gen Ice Cream Corp, h 123 North
 " Lee W (Agnes C), agt Prudential Ins Co, res LeRoy
 " Mary A, h 41 Tracy av
 " Mary E (Mrs J Howard), teacher Pringle Av School, h 123 North
 " Raymond K (Louise F), prop Bailey's Radiator Works, r 74 Franklin
 Bailey's Radiator Works, Raymond K Bailey prop, auto radiator repairing
 240 W Main
 Baird Lena B, wid Alexander, r 15 Redfield pkwy
 Baker Edward J, trucking cont 57 Tracy av, r do
 " Elmer C (Lillian I), teacher, h 9 North pk
 " Frank R (Laura E), wood wkr, h 2 Willow
 " Fred E (Ida A), lab, h 11 Eleanor
 " George P (Anna M), guard Attica, h 112 Bank
 " Fred S (Martha), painter, r 13 Wiard
 " Harriet B, wid George W, ins 130 Summit, h do
 " Helen L, ins agt 130 Summit, r do
 " Herbert F (Mabel M), salesman, h 100 Summit
 " Jane E, wid Arthur, h 31 Pearl
 " John, h 19 Bank
 " Lena Mrs, hskpr 18 Ellicott, r do
 " Leon S (Anna M), printer E N R Co, h 3 Holland av
 " Mary E, wid George, h 4 Vine
 " Philip (Catherine), h 57 Tracy av
 " Thomas L (Anna), mgr Genesee Market, h 13 Vernon av
 " William F, mach, r 19 Bank
 Balcer Florence H (Mrs Walter), emp P W M & Son, h 52 Otis
 " Walter (Florence H), emp P W M & Son, h 52 Otis
 Balcom Charlotte, photographer, r 5 Dellinger av
 Baldut William H (Helen), mgr Lang's Bakery, h 11 Norris av
 Baldwin Carrie E, wid Charles, h 300 Washington av
 " Dorothy P (Mrs Howard G), sten Blue Bus Lines, h 45 Redfield pkwy
 " Howard G (Dorothy P), acct M-H Co, h 45 Redfield pkwy
 " Howard J, student, r 45 Redfield pkwy
 " Irene Mrs, h 420 E Main
 " Balicki Michael (Blanche Z), lab, h 10½ Otis
 " Stanley (Anna G), emp M-E Co, h 449 Ellicott
 " Stanley M, r 449 Ellicott
 " Virginia E M, emp P W M & Son, r 449 Ellicott
 Ball Elmer G (Elizabeth S), foreman P W M & Son, h 4 Montclair av
 " James L (Annie H), carp, h 39 Center
 " Lorraine Z, mach opr E N R Co, r 62 Walnut
 " Myra H, wid Sylvanus B, r 22 Lyon
 " Oren D (Charlotte A), foreman E N R Co, h 62 Walnut
 " William, student, r 39 Center
 Ballard Clare T (Bess J), ticket clk Erie R R Co, r 10 Bank
BALLARD FRANK W (Mary O), lawyer and U S Commissioner 39 Jackson,
 h 120 do, see p 31
 Balle Andrew J, wood wkr B & N Y W Co, r 164 S Main
 " Frank A (Irene I), wood wkr, h 14 Walnut
 " Jane J, wid Joseph, h 164 S Main
 Ballsmith Mary, wid Emery C, h 115 Ross
 " Mary A, emp Buffalo, r 115 Ross
 Bangesdorf Mary, wid Frank C, hskpr 250 Bank, r do
BANK OF BATAVIA pres, Herbert T Booth; cashier, George W Wynn, 69-71
 Main, see insert opp name
 Bannister Charles J, r 13 Franklin
 " Ella L, wid Charles E, r 13 Franklin
 Baranowsld Francis A (Katherine L), lawyer and real estate 14 Jackson, h 25
 Chestnut

Bank of Batavia



Officers

- Everett R. Tomlinson**
(Chairman of the Board)
Herbert T. Booth
(President)
Andrew J. McWain
(Vice-President)
George W. Wynn
(Cashier)
Frank M. Neaverth
(Asst. Cashier)
Hugh B. Telfair
(Asst. Cashier)
Arthur J. Bishop
(Asst. Cashier)

Directors

- NEWELL K. CONE**, Genesee County Judge and
Surrogate
ARTHUR G. HOUGH, Vice President Wiard Flow
Co.
ANDREW J. McWAIN
President Griswold & McWain, Inc.

EVERETT R. TOMLINSON
Chairman of the Board

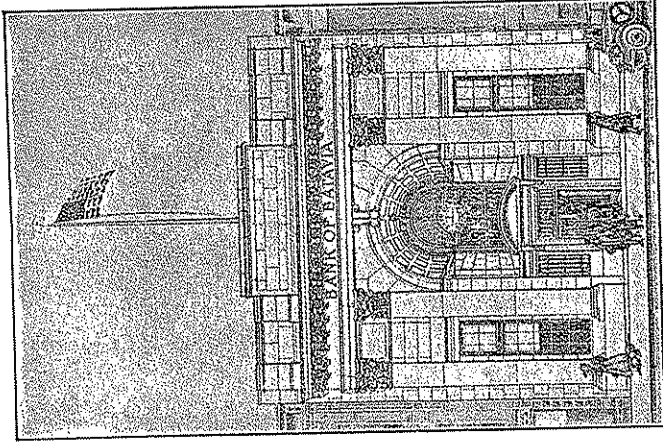
HERBERT T. BOOTH
President

Named for the City It Serves
Member of Marine Midland Group of Banks

- Barbagallo John, student, r 441 Ellicott
- " Joseph (Mary R), lab, h 441 Ellicott
- " Josephine H, r 441 Ellicott
- Barbeau Alexander J (Julia), elec insp and mgr Underwriters Asso State of N Y, h 154 Summit
- " Florence, wid Alexander, hskpr 311 Washington av, r do
- " George A, elec appr, r 154 Summit
- " Henry F, r 154 Summit
- " John H, r 154 Summit
- Barber Alice M, wid Henry I, h 34 Redfield pkwy
- " Arthur G, emp M-H Co, r 44 Columbia av
- " Grace A, wid George, h 44 Columbia av
- " Lincoln J (Alice J), janitor 19 Ross, h 12 S Spruce
- " Morris W, lab N Y C R R, r 18 Ellicott pl
- " Seward W (Nora B), lab, h 18 Ellicott pl
- Barclay Freeman S (Katherine), clk E N R Co, h 152 Vine
- Bargain House, Harry Krieger mgr, second hand goods 16 Jackson
- Bargay Clarence L (Carrie R), retired, h 8 Vernon av
- " Clarence M, student, r 8 Vernon av
- " Merton M, railway mail clk, r 8 Vernon av
- Barlow Robert A (Lois T), adj Travelers Ins Co, h 55 Redfield pkwy
- Barnard Glenn (Eleanor), salesman Athoe Motors, r 28 Manhattan av
- Barnes Dell (Alice E), truck driver, h 5 McKinley av
- " Eunice, r 4 Hutchins pl
- Barone Angela L, wid James S, h 4 Central av
- " Anthony, r 125 Liberty
- " Anthony F (Josephine P), lab, h 125 Jackson
- " Anthony N, pharmacist, r 5 Thorp
- " Anthony T (Carrie M), cont 141 Jackson, h do
- " Carmello (Jennie C), lab, h 18 Maple
- " Carrie F, r 125 Jackson
- " Charles Jr (Alvera V), emp M-H Co, r 120 Liberty
- " Dominic A, student, r 5 Thorp
- " Florence L, shirt opr J H & Son, r 5 Thorp
- " Frank L (Josephine L), emp D D C Co, h 10 Central av
- " James, lab, r 5 Thorp
- " Joseph (Mary E), lab, h 25 Central av
- " Joseph F, lab, r 5 Thorp
- " Leonardo, lab, r 18 Maple
- " Louis, lab, r 25 Central av
- " Louis (Sarah C), lab, h 5 Thorp
- " Louis R, lab, r 5 Thorp
- " Mary M, opr J H & Sons, r 18 Maple
- " Mary M, wid Peter, h 3 Taggart
- " Paul (Frances S), h 125 Liberty
- " Paul Jr, r 125 Liberty
- " Philip J (Beatrice), lab, h 227 Liberty
- " Sam, painter and paperhanger, r 125 Liberty
- " Samuel, student, r 18 Maple
- " Stanley (Mary D), lab, h 127 Liberty
- Barre Percy L (Ruth), dept mgr C L Carr Co, h 328 W Main
- Barrett Charles W, emp 417 W Main, h do
- " Helen T, student, r 417 W Main
- " John J (Carrie A), gas and oils 417 W Main, h do
- " John J Jr, student, r 417 W Main
- Barsuk Harry W (Ethel F), junk dealer 46 Buell, h do
- " Jacob (Ida W), auto wrecking 44 Buell, h do
- " Max, emp 44 Buell, r 46 do
- Bartholomew Frank (Mary), lab M-H Co, r 22 Hyde pk
- " John J (Stephanie A), emp N Y C R R, h 43 Hutchins
- " Nicholas J (Lydia F), lab, h 17 Central av
- Bartlett Emelyn H, wid Franklin H, r 58 Ellicott av
- " Kenneth H (Helen B), gen mgr F E M & Sons, h 58 Ellicott av
- Barton Eva M (Mrs LaRay), bkpr McAlpine, Brunsted & Co, h 23 Lyon
- " Isaac R (Elizabeth H), retired, h 18 Park av

For All Your Banking

In Genesee, Erie, Niagara and Monroe Counties, there are eleven Marine Midland Banks. Altogether, twenty-two New York State Banks make up this Marine Midland Group.



Through its membership in the Group, this bank offers you or your business unusual banking facilities.

We invite you to open an account here.

Bank of Batavia

Named for the City It Serves



CARS AND TRUCKS | **ATHOE MOTORS, INC.**
COMPLETE STOCK OF PARTS
W. MAIN AND LYON Phone 1335

46 1934—BATAVIA DIRECTORY—1934

Barton LeRay (Eva M), salesman McAlpine, Brumsted & Co, h 23 Lyon
 " —see Bartosiak
 Bartosiak Frank J (Loretta O), lab, h 33 William
 " John, lab, r 127 Jackson
 " Joseph (Mary W) lab, h 31 William
 " Sophie, emp J H & Sons, r 31 William
 " Stanislaw A, emp Hornell, r 31 William
 Base Edward J (Mearl), clk Sugar Bowl, h 116 State (2)
 " Elizabeth Mrs, clk, r 116 State
 Bash Raymond H (Florence A), lab, h 49 Buell
 Basile Jennie R, opr J H & Sons, r 330 Ellicott
 " John, r 330 Ellicott
 " Vito (Angeline L), h 330 Ellicott
 " Vito F, r 330 Ellicott
 Bassler Kenneth C, truck driver, r 202 Bank
 Bastian Charles E (Myra A), clk M-H Co, h 106 Elm
 " Margaret M, waitress Plaza Restaurant, r 111 Jackson
BATAVIA AUTO PARTS CO B Harry Fisher prop, parts for all cars, 114 Walnut,
 see under name

Batavia Auto Parts Co.



NEW and USED PARTS

For all makes of cars

114 WALNUT ST. Phone 81 BATAVIA, N. Y.

Batavia Body Works, Morton Silver prop, 4 Clark pl
 " Boxing Club, pres, John DiCarlo, 24 Cherry
 " Brake & Duco Service, William F Utess prop, auto painting 349-351 W Main

BATAVIA CHAMBER OF COMMERCE INC exec sec, Dr Arthur E Martin; pres, Rev C Kirby; 1st v-pres, C P Wells; 2nd v-pres, H E Harrower; 3rd v-pres, J S McAlpine; treas, J L Bean, 65 Main, see Chamber of Commerce, see p 15

BATAVIA CITY OF attorney, William H Coon, 51 Main
 " city of, bacteriologist, Dr F D Carr
 " city of, board of appeals, zoning commission, chr, Frank H Hornelius; sec, Henry A Clark; E R Tomlinson, N K Cone, W C Casey
 " city of, board of assessors, chairman, William C Casey; George H Page, sec, Charles Teresi
 " city of, board of health, Charles W Hartley, chairman; Charles I Hodgson, Arthur R Churchill, Daniel W Tomlinson Jr, James L Bean, William F Bohm, Dr F D Carr, Frank H Webber clk
 " city of, child welfare nurse, Mrs Margaret P MacLean

BATAVIA CITY OF CITY HALL West Main

" city of, civil service commission, Frank R Mullen, chairman; Lee F Kingdom, sec; Ralph C Harding. Meets City Hall
 " city of, Civil Works Administration, chairman, Louis Wiard; exec dir, Michael J Early Municipal bldg
 " city of, clerk, Frank H Webber
 " city of, commissioner of public welfare, Henry W Ware, City Hall
 " city of, councilmen, first ward, Allen W Gillard; second ward, Frank H Goade; third ward, Charles C Hawley; fourth ward, James F McGrath; fifth ward, Philip R Marcello; sixth ward, Harry E Slocum;
 Common Council meets 1st and 3rd Wednesday evenings each month

W. C. DAWSON Coal and Coke

COAL POCKET AND OFFICE
38 MAPLE Phone 780

1934—BATAVIA DIRECTORY—1934 47

Batavia city of, dairy inspector, Dr James G Wallace, 211 E Main
 " city of, deputy clerk, Ruth M Laraway
 " city of, engineer, Norman F Hall (acting), City Hall
 " city of, fire department, chief, Harry V Gerling; asst chief, George T Gilharr, Court; sta No 1, Court sta No 2, 307 Ellicott

FIRE DEPARTMENT — The Batavia Fire Department consists of 18 paid men and chief and asst chief stationed in two houses. The apparatus consists of hose, chemical pumper, equipped with pumper and one aerial ladder truck, all motor apparatus. There are 63 fire alarm boxes and 310 hydrants. The department car. ries 5,000 feet of hose.

WARD ONE

Box 12 Elm and Holden
 13 Vine and Fisher
 14 East and Columbia
 15 Ross and Main
 16 Ross and Ellsworth
 17 Ross and North
 19 Summit and Washington
 112 East School, E Main
 113 High School, Ross
 114 Batavia Hospital
 115 Children's Home
 116 St Joseph School
 117 State Troopers, E Main

WARD TWO

Box 21 Main opp Jackson
 22 Main opp State
 23 Main and Jefferson av
 24 State and Washington
 25 State and North
 27 Bank and Washington
 28 Bank and Fairmount av
 29 North and Tracy
 221 St Jerome's Hosp
 222 Washington School

WARD THREE

Box 31 Main and Ellicott av
 32 Main and Lyon
 33 Main and Woodrow
 34 Main and Redfield park
 Batavia city of, health officer, Emery F Will, M D, Municipal Bldg
 " city of, judge, John B Greeley, School
 " city of, justice of peace, Philip J Weiss, 200 E Main
 " city of, mayor, Charles W Hartley
 " city of, National Re-employment Service, mgr, Earl C Wittse; Municipal Bldg

" city of, pump station and filter plant, end S Jackson
 " city of, physician, Wilson C Swasey, City Hall
 " city of, planning commission, Milton R Miller, chairman; Henry Honeck, Edward J Lear, George W Buckholtz, Walter W Stroh, Albert F Kleps, Frank J Bernd, City Hall
 " city of, plumbing inspector, Sherman D Hall, City Hall

WARD FOUR

Box 41 S Main and Walnut
 42 S Main near Brooklyn
 43 S Main opp Madison
 44 Pearl opp Williams park
 45 Walnut near N Y C Ry
 46 Evans near Erie Ry
 47 Mill and Robertson
 48 Doehtler Die Brass Co
 49 Evans and Maple
 441 West School, W Main
 442 Brooklyn School

WARD FIVE

Box 51 Jackson & Ellicott
 52 Jackson and Wood
 53 Jackson and S Jackson
 54 S Jackson and Hutchins
 57 Liberty near School
 58 Hutchins and Sumner
 551 Pringle School
 552 S Jackson School
 553 St Anthony's School

WARD SIX

Box 61 Wiard Plow Works, Swan
 62 Ellicott & Otis
 63 Ellicott and Harvester
 64 Ellicott and Buel
 65 B & N Y W Co
 66 Massey-Harris plant
 67 Main and Harvester
 68 Main and Clinton
 661 Sacred Heart School, Swan
 662 Lincoln School, William

Batavia city of, police department, chief of police, G. Forrest Brown; assistant chief, Thomas F. Donoghue; patrolmen, Arthur J. Luplow, Gasper Baudanza, Harry W. Rippeel, Carl Salway, Harley Bort, Thomas F. Cummings, Neal Smock, Dawson Kendall, Albert G. Delbridge, William C. Krantz, Clarence Bates, Milford J. Smith, Edward Kelly, Forest Gray, Fred Wilkie; police matron, Elizabeth M. T. Buckley; stenographer, Thelma Dawson; police headquarters and detention house, School

" city of, recreation commission, chairman, Andrew M. Clough; Albert J. Waterman, Horace H. Chapin, Charles I. Hodgson, Mrs. Lena A. Mason

" city of, registrar of vital statistics, Frank H. Webber, dep., Mrs. Ruth Laraway

BATAVIA CITY OF SCHOOL DEPARTMENT see Schools and p 23

" city of, superintendent of filtration plant, Herbert M. Cook; water plant S. Jackson

" city of, superintendent of light and power, W. Elby Keyser, Municipal Bldg

" city of, superintendent of public works, Roy S. Henderson, Municipal Bldg

BATAVIA CITY OF SUPERINTENDENT OF SEWAGE DISPOSAL PLANT, Henry F. Lambert, Hillcrest av

" city of, surgeon, Dr. F. D. Carr, 73 Main

" city of, treasurer, John C. Pratt, 112 Main

" city of, zoning enforcement officer, Norman F. Hall, City Hall

" Clump Co (Inc), 37 Center, pres-treas-mgr, Charles W. Gardiner; v-pres, Mrs. M. H. Gardiner; sec, Daniel W. Tomlinson

" Club, 201 E. Main, Carl L. Locke steward; pres, Stanley R. Hare; sec-treas, Frank M. Neaverth

" Co-operative G. K. F. Service Inc, flour, feed and grain, J. Edgar Philleo mgr, 41 Ellicott

BATAVIA DAILY NEWS see Daily News, see p 37

" Dry Cleaning & Pressing Co, Michael J. Kallighan prop, 35 Jackson

" -Elmhira Express Lines Inc, sec-treas, E. Horace Hussey; mgr, Fred E. Wolf, 23 Evans

" Exempt Volunteer Firemen's Association, pres, Arthur Luplow; treas, James H. Kane; fin sec, Frank M. Whalen; cor sec, Lafayette Van Alst. Meets first Friday of month over 2 Main (6)

" Garage (George E. Smith and Harris M. Bossart), 53 Ellicott

BATAVIA HOSPITAL THE Mrs Julia B. Gubb gen mgr, North and Summit, see p 36

" Laundry, John H. McKeon mgr, 251 W. Main

" Liquor Store, Augustino Cairo prop, 56 Main

BATAVIA LUMBER & COAL CO builders supplies, Bert H. Hanby prop, 22 Evans, see p 26

BATAVIA METAL PRODUCTS CORPORATION manufacturers of transmission controls, special drop forge levers and pole line construction derricks, 20 Liberty; pres, Daniel W. Tomlinson; v-pres, Arthur G. Hough; sec-treas, Mrs. Josephine B. Miller

" Miss Diner, William R. Bullock prop, 566 E. Main

" Motor Coach Co (Arthur H. Sands and Earl P. Churchill), city bus service 3 Kingsbury av

" Oil Store, Louis Foon prop, 3 State

" Pastry Shop, Ferdinand W. McCoskey prop, 3 State

" Poster Advertising Co, Cornelius M. Haitz and Henry A. Clark mgrs, 98 Main (6)

" Produce Co (Inc), farm produce and supplies 45 Ellicott; pres, Charles C. Avery; v-pres, Roy A. Porter; sec, Adelbert E. Howland; treas-mgr, Roy J. Wigton

" Production Credit Assn, sec-treas, Arthur P. Spiers, federal loans 20 State

BATAVIA PURE ICE AND STORAGE CO INC manufactured ice 9-13 Central av, pres, Dr. Nicholas J. Shults; v-pres, Frank W. Garnier; sec-treas-mgr, Peter J. Marion, see p 25

" Sanitary Bakery, Mrs. Lucia Z. Prospero prop, 421 Ellicott

BATAVIA SCHOOL DEPARTMENT see Schools, see p 23

" Shoe Shine Parlor, Anthony Papero prop, 14 Jackson

Batavia Shoppe Inc (props Bon Ton Millinery), 92 Main, pres, Irving L. Goldstein; sec-treas, Mrs. Leona Goldstein

" Specialty Co (Inc), metal stamping rear 53 Ellicott, pres-treas, John Jay Stedman; v-pres-sec, Mrs. Maude F. Stedman

" Teachers Association, pres, Mrs. Ruby M. Mark; treas, Walden S. Cofran. Meets at call of president

BATAVIA TIMES PUBLISHING CO THE publishers The Batavia Times, 20 Center, pres-treas, Chester C. Platt; sec-mgr, Albert F. Kleps; asst-treas, Emily L. Wood

BATAVIA TIMES THE Batavia Times Publishing Co, Albert F. Kleps sec-mgr, publishers: 20 Center

" town of, Board Room, 2 Court

" Trucking & Carting Co (Clair J. Turner and Clifford F. Putney), rear 26 State

" Washed Sand & Gravel Co (Inc), Cedar, pres, Arthur B. Caldwell; sec-treas, C. L. Bucholtz; B. G. Lucas mgr

" & New York Wood Working Co (Inc), mfrs interior hard wood trim, Elizabeth n. Buel; pres-treas, Charles H. Honeck; v-pres, Frank S. Bosworth; v-pres, Henry Honeck; sec-asst treas, John B. Seaver

Bateman Albert E. (Blanche M.), lab, h. 23 Wiard

" Bernard, emp P. W. M. & Son, h. 104 Bank

" Doris E., maid 69 Redfield pkwy, r. do

Bater Charles W. (Arlene G.), emp LeRoy, h. 25 Vine

Bates Clarence W. (Viola M.), patrolman, h. 111 Summit

" Elizabeth Mrs., r. 27 Wiard

" Emerson, emp P. W. M. & Son, r. 38½ Jefferson av

" Herbert (Eleanor B.), lab, h. 41 Center

Battaglia Anthony (Mary), lab, h. 11 Watson

" Anthony J., lab, r. 454 Ellicott

" Charles W. (Rose E.), lab, h. 17 Thorp

" Cosmos V. U. S. A., r. 454 Ellicott

" Frances L., opr J. H. & Sons, r. 125 Jackson

" Frank J., lab, r. 17 Thorp

" Frank R. (Grace M.), lab, r. 1 Central av

" George M., lab, r. 17 Thorp

" James, emp Buffalo, r. 454 Ellicott

" John, r. 454 Ellicott

" Joseph, lab, r. 454 Ellicott

" Joseph (Rose D.), h. 454 Ellicott

" Joseph S., lab, r. 17 Thorp

" Michael, lab, r. 454 Ellicott

" Rose M. Mrs., opr J. H. & Sons, r. 306 S. Jackson

" Sarah J., opr J. H. & Sons, r. 17 Thorp

Baube Earl C. (Blanche D.), prop Earl's Auto Service, h. 34 Lyon

Baudanza Anna J., r. 14 Ganson av

" Gasper (Mary M.), patrolman, r. 14 Ganson av

" Joseph, r. 14 Ganson av

" Mary, opr J. H. & Sons, r. 14 Ganson av

" Peter (Mary M.), lab N. Y. C. R. R., h. 14 Ganson av

" Vito, emp Angram Dining Car, r. 14 Ganson av

Bauer Celia, wid Andrew, dom 45 Ellicott av, r. do

" Frank, sub clk Post Office, r. 25 Walnut and res Alexander

" Frank J. (Annabel), foreman N. Y. C. R. R. frt. house, r. 29 Bank

" William S., gas sta attd Athoe Motors Inc, h. 23 Ellicott av

Bausch J. Albert, asst. pro Stafford Country Club, r. 36 Columbia av

" John J. (Frances D.), emp L. C. Stroh & Sons, h. 36 Columbia av

" Mary C., emp E. N. R. Co, r. 36 Columbia av

" T. Carroll, emp Delbridge Press, r. 36 Columbia av

Baxendale Ernest (Lena D.), ensign Salvation Army, h. 32 Jackson

Baxter Louis B. (Eva), lab, h. 111 Jackson

" Margaret (Mrs Thomas), emp N. Y. S. S. B., r. 150 Bank

" Thomas A. (Margaret), mason, h. 150 Bank

Beach Harold W., private state police, r. 669 E. Main

" Harry J. (Mae M.), master mech, h. 13 East av

Beachel Charles W. (Nellie M.), emp N. L. & O. P. Co, h. 6 Oak

STATIONERY

Eaton Paper Co.
White & Wyckoff
Crane—Montag

Carlton M. Slight

67 MAIN STREET

50

1934—BATAVIA DIRECTORY—1934

- Beachel Harold J, emp R E C Mfg Wks, r 19 Holland av
" Leo W, painter and paperhanger 19 Holland av, r do
" William J (Alida), meat cutter Leroy, h 1 Vernon av
Beadnell Thomas A (Florence B), teacher N Y S S B, h 2 Park av
Beals Carlton, orderly St Jerome Hosp, r do
BEAN JAMES L (Scott & Bean), and tress Batavia Chamber of Commerce and pres Board of Education, h 403 E Main
" Mary E, asst librarian Richmond Memorial Library, r 419 E Main
BEARDSLEY E J CO INC clothing, trunks, bags, etc 65 Main, pres, S D Meier;
v-pres, Edwin L Putnam; sec-treas, Emory J Beardstley, see p 22
BEARDSLEY EMORY J (Ruth H), sec-treas E J Beardsley Co Inc, h 12 Thomas av
" Horace A (Celia S), com trav, h 228 W Main
" Roger R (Eleanor W), h 50 Ellicott av
Beaton James S (Ida), lab, h 217 North
Bechteler Richard J, tool mkr D D C Co, r 7 Morse pl
Becker Adelia A, sec Dr Irwin A Cole, r 610 Ellicott
" Elizabeth A, student, r 610 Ellicott
" Frank E (Catherine G), prop Heidelberg Inn & Garden, h 610 Ellicott
" John C (Mae E), salesman Charles Mancuso & Son, h 39 Montclair av
" Mary M, r 610 Ellicott
" Richard J, r 610 Ellicott
" Robert, emp Charles Mancuso & Son, r 39 Montclair av
" William L (Louise M), fireman N Y C R R, h 35 Montclair av
Beckwith Charles H (Regina N), gas sta attd Walter W Buxton, h 18 Kingsbury av
" John N (Edna C), sta eng city pumping sta, h 3 Maple
" Leon F, chauffeur, r 3 Maple
" Lloyd F, chauffeur, r 3 Maple
Bedell William A (Anna M), retired, h 19 North
Beecher Althea E, emp P W M & Son, r 172 Ross
" Collins C, emp P W M & Son, r 172 Ross
" Louis, r 7 Wood
" Philip L, lab, r 7 Wood
" William B (Vera M), truck driver, h 172 Ross
Beecher Agnes C, emp The Delbridge Press, r 128 Harvester av
" Carlton A, clk Grand Union, r 128 Harvester av
" Edward H, lab, r 128 Harvester av
" Edward J, maintenance foreman state highway dept, h 128 Harvester av
" George B (Eva M), foreman state highway dept, h 1 Lyon
" Glenn M (Sophie M), emp E Pembroke Canning Co, h 140 Bank
" Louella M, r 128 Harvester av
" Mildred F, dom 1 Lyon, r do
" Paul J, truck driver Red Seal Service, r 1 Lyon
Beers Catherine E, r 64 Pearl
" Frank G (Mary F), asst dist mgr John Hancock Mutual Life Ins Co, h 64 Pearl
Beilstein Angeline M, wid Charles, clk Hiscutt Baking Co, r 6 Norris av
Belcher Burdette W (Jeanne L), tool designer D D C Co, r 7 Porter av
" C Ward, bkpr, h R D 1
" Jeanne L (Mrs Burdette W), sten Genesee Co Dept of Pub Welfare, r 7 Porter av
Bell Earl C (Barbara O), painter and paperhanger 19 Swan, h do
" Florence, h 12 Porter av
" Franklin E, r 19 Swan
Bellucci Biagio (Anna Zi), emp N Y C R R, h 20 Hyde Park
" Frank P (Lena L), moulder M-H Co, h 110 Hutchins
Bench Earl F (Lillian M), guard Attica, h 65 Lyon
Benchley Myrta E, wid Clarence A, h 25 Washington av
" Myrta L, sten, r 25 Washington av
Bender Alfred, retired, r 4 Fairmount av
" Fay, r 5 Pringle
" Hime, emp J H & Sons, r 5 Pringle
" Lillian C, sec-treas Edward H Leadley Inc, r 4 Fairmount av
" Samuel, r 5 Pringle

Adam, Meldrum & Anderson Co.

MAKE OURS YOUR STORE-HOME IN BUFFALO

1934—BATAVIA DIRECTORY—1934

51

- Bender Solomon (Anna G), tailor 9 Jackson, h 5 Pringle
Benedict Charles E (Grace W), retired, h 36 Redfield pkwy
" Donald C (Gertrude H), carrier P O, res R D 3
" Florence E, wid George B, packer E N R Co, h 2 Jefferson av (4)
" Marion L Mrs, h 34 Bank
" Mary E, h 7 New York pl
Benevolent Protective Order of Elks Batavia Lodge No 950, 213 E Main,
E R, William S Kane; sec, Frank Homelius. Meets 1st and 3rd
Tuesdays Elk Home
Bennett Edward J, priv state police, r 669 E Main
" Frederick, clk 214 E Main, r 16 Chestnut
" Ida L, wid Fred T, emp E N R Co, h 16 Chestnut
" Marilla, wid Charles H, r 121 Elm
BENNETT WALTER D (Ruth A), veterinary hospital 208 State, h do, see p 38
" Walter E, boys sec Y M C A, r do
Bennington John R, retired, r 15 Woodrow rd
Benith Gustave A (Lina B), shipping clk E N R Co, h 656 E Main
" Henry (Alta), emp Climax Corp, h inq 656 E Main
Bentkowski Walter (Anna D), lab, h 126 Hutchins
Bentley Bertha K (Mrs Walter R), laundress St Jerome Hosp, h 14 Jackson
" F Earl (Pauline), county dog warden, h 9 Manhattan av
" Florence C, r 32 State
" Frances J, r 14 Jackson
" Francis E, r 9 Manhattan av
" Freda P, clk W T Grant Co, r 3 Margaret pl
" LaVern A (Catherine L), wood wkr, h 17 Clinton
" Laverne L Jr, student, r 17 Clinton
" Lyle W, lab, r 32 State
" Mabel I Mrs, h 3 Margaret pl
" Reuben A (Ethel), lab, h 32 State
" Walter R (Bertha K), h 14 Jackson
Benton E Jerome (Mary A), retired, h 29 Pearl
Benty Clarence S (Helen), truck driver, h 6 Prospect av
" Cornelius L, r 6 Prospect av
" Herbert A, student, r 6 Prospect av
" Joseph J, emp B T Pub Co, r 6 Prospect av
Benway Leslie C (Violet), sgt state police, h 39 Clinton
Benz Margaret A (Mrs Herman H), bkpr Genesee Trust Co, res Oakfield
Berardini Donato (Assunta B), emp N Y C R R, r 20 Hyde pk
Berge Delia A (Mrs Fred), emp E N R Co, h 43 Washington av
" Everett F, emp Mancuso's Bowling Alley, r 43 Washington av
" Fred (Delia A), janitor St Mary's Church, h 43 Washington av
" Lester J, r 43 Washington av
Bergeman Arthur A (Harriet H), auto repairing rear 143 W Main, h 4 Holland
av
Berkinshaw Wilfred W, clk N L & O P Co, r 21 Redfield pkwy
Berringham Edmund T, emp P W M & Son, r 18 Buell
" Edward T, mach, r 53 Tracy av
" James P, printer B T Pub Co, r 18 Buell
" John J (Lena S), foreman M-H Co, h 18 Buell
" Robert J, student, r 18 Buell
Bernard Aletha D Mrs, r 30 Oak
" Aletha F (Mrs Edward W), beauty parlor 30 Oak, r 26 Adams
" Benjamin L, emp R E C Mfg Wks, r 3 Chestnut
" Edward W (Aletha F), truck driver, r 26 Adams
" Elmer W, r 26 Adams
" Frederick G, stock clk Granger & Co, r 12 Walker pl
" LaVerne F (Esther A), truck driver S O Co, h 69 Oak
" Oscar E, r 21 Chestnut
" Oscar H (Mary H), carp cont 21 Chestnut, h do
" William L (Mary K), meat cutter Wiedrich's Quality Market, h 26 Adams
Bernauer Estella A, wid Frank, h 14 1/2 Swan.
Bernrd Frank J, retired, h 15 Walnut
Bernstein Israel, r 115 Washington av
Berry Cora Mrs, r 1 Haller pl

52 1934—BATAVIA DIRECTORY—1934

- Berry Fred N (Helen E), mgr Market Basket 18 State, h 206 East av
 " James C, barber 59 Main, r 206 East av
 " Miles L (Margaret V), lab, h 4 Oak
 " William (Nellie A), emp M-H Co, h 8 East av
 Berry Patch The, Mrs Mary B Sweetland prop, tea room 24 Main
 Berrymann Leo H (Mildred), cont and builder 133 Tracy av, h do
 Besco Charles O, machinist, r 137 Walnut
 " Chester A (Florence P), truck driver, h 137 Walnut
 Best Katherine M, r 3 Central av
 " Louis, r 3 Central av
 " Louis (Lettitia V), lab, h 3 Central av
 " Robert R (Erie A), printer Albert F Kleps, h 38 Kingsbury av
 Beswick Genevieve A, dom 37 Washington av, r do
 " Lee E (Anna C), clk P O, h 9 Hart
 Betteridge Harry E (Ida M), eng Gen Ice Cream Corp, h 29 Trumbull pkwy
 " William L, r 29 Trumbull pkwy
 Betties Albert (Florence J), farm lab, h Lyon ext
 Betts Myron E (Caroline A), salesman R L & P Co, h 145 Summit
 Bezton Helen M, emp E N R Co, r 7 Ganson av
 " John, r 7 Ganson av
 " Joseph, r 7 Ganson av
 " Michael, r 7 Ganson av
 Bialkoski Alexander A, student, r 18 Otis
 " Amelia M (Mrs Charles), dom, h 18 Otis
 " Charles (Amelia M), lab, h 18 Otis
 Bickle Alfred E (Myra H), retired, h 8 Swan
 " Mary A, wid William H, h 15 Manhattan av
 Biddlecombe Albert F (Jeanne R), chief opr N L & O P Co, h 22 Brooklyn av
 " Francis G, emp D D C Co, r 22 Brooklyn av
 " John T, r 22 Brooklyn av
 Bidleman Jane, wid Benjamin, r 43 Oak
 Bięgasiewicz Adam (Sophia F), emp M-H Co, h 121 Harvester av
 " Frank, r 294 Ellicott
 Bigelow Donald E (Elizabeth E), truck gardener, h 8 Charles
 " Elizabeth (Mrs Donald E), clk W T Grant Co, h 8 Charles
 Bignall Adah C, wid Frank M, h 20 Thomas av
 " Margaret A, student, r 20 Thomas av
 Bin John, private state police, r 669 E Main
 Billings Lillian R, wid Charles D, r 21 Oak
 Bills Howard A, private state police, r 669 E Main
 Bily Anthony F, private state police, r 669 E Main
 Bird Britta A, r 210 State
 " Charles F (Pearl L), chauffeur Kendall Gas Co, h 619 E Main
 " Frank (Hazel E), farmer Byron, h 6 Law
 Birgett Mary A, tskrpr 20 Lehigh av, r do
 Birmingham Allen (Lena L), emp P W M & Son, h 15 Liberty
 " John J (Edith M), fireman B F D No 1, h 401 School
 " Louis J (Anna M), mgr Parsons Drug Co 99 Main, r 6 Porter av
 Biro Kenneth J, student, r 11 Swan
 Bisbey Fannie Vosburg, r 56 Columbia av
 " Nellie A, h 56 Columbia av
 Bishop Addison A, r 128 Summit
 " Alice P, painter and paperhanger, h 58 Main
 " Arthur, cashier Bank of Batavia and pres Retail Merchants Assn, r 128 Summit
BISHOP ARTHUR J asst cashier Bank of Batavia, h 128 Summit
 " Elmer P (Julia G), painter and paperhanger 27 Holland av, h do
BISHOP HAROLD J (Beatrice B), sec H E Turner & Co, h 8 Woodrow rd
 " Margaret H, teacher Jackson School, r 128 Summit
 Bissell Helen I (Mrs John J), sten LeSeur & Bissell, h 16 Seaver pl
 " John J (Helen I), (LeSeur & Bissell), h 16 Seaver pl
 Black Fannie Mrs, r 26 Wiard

1934—BATAVIA DIRECTORY—1934 53

- Blackmer Kenneth E, mach F E M & Sons, r 18 East av
 " Marian Mrs, r 17 Vine
 " Walter (Josephine), lab, h 15 Wiard
 Blair Mary A, wid Charles L, h 35 Washington av
 " William B, h 13 Brooklyn av
 Blaise John F (Mildred M), mech M-H Co, h 116 State (4)
 Blanchard Douglas J (Helen I), monuments and granite 22 Fisher pk, r do
 " Evelyn R, dom 152 Summit, r do
 " Judd A (Nettie S), retired, h 22 Fisher pk
 " Lester B (Ruby F), auto accessories 505 E Main, h 438 do
 Bleuer Eliza M, wid Daniel, h 36 Union
 Bligh Arthur H (Harriet), draftsman, h 112 East av
 Bliss Florence M, bkpr Granger & Co, h 119 East av
 Bliszczak John (Margaret), lab, r 60 Otis
 Bloch Charles D (Julia P), retired, h 123 Bank
 Bloodgett Joseph N, foreman M-H Co, h 6 East av
 " Julia B, r 15 Manhattan av
 Blood Charles H (Madeleine), carp, h 26 Columbia av
 " Dorothy E, sec to supt of schools, r 14 Elm
 " Fred S (Viola P), emp Climax Corp, h 45 Vernon av
 " Katherine M, sten N L & O P Co, r 14 Elm
 " Walter E (Sarah E), retired, h 14 Elm
 Bloomgren Herbert W, private state police, r 669 E Main
 Blossom Clayton D, r 17 S Spruce
 " Eunice F, emp F E M & Sons, r 20 Roosevelt av
 " Harry W, chauffeur Casey Carting Corp, r 17 S Spruce
 " Ward F (Leona M), mach E N R Co, h 20 Roosevelt av
 Blount Herbert L, conf 106 Main, r 320 W Main
 Blowers Harry J (Emily R), salesman, h 4 Lacrosse av
 Bluck Harry D (Melvina E), chief clk N Y C R R frt house, res Akron
 " Melvina E (Mrs Harry D), cashier N Y C R R frt house, res Akron
BLUE BIRD INN Mrs Marie E Grentzinger prop, hotel and restaurant 125-127 W Main, see back cover
 " Bus Diner, Frank B Harris prop, 8 Court
 Blumberg Samuel A (Edythe M), jeweler 110 Main, h 10 Tracy av
 Blumerick Edward W (Leo Alice), salesman, r 46 Montclair av
 " Marie A, wid August, r 18 Woodrow rd
BOARD OF EDUCATION offices 255-259 W Main, see p 23
 " Louise M, wid Frank W, h 10 Vine
 Boatfield A Barbara, teacher, r 615 E Main
 " Gladys (Mrs Irving), clk W T Grant Co, res Morganville
 Bodano Rafaela M, wid Joseph, h 409 Ellicott
 Bogue Anson W, prop Genesee County Nurseries, h 34 Richmond av
 Bohm Clarence W (Catherine), (W F Bohm & Son), r 308 E Main
 " Mortuary The, William F Bohm & Son prop, funeral directors 308 E Main
 " W F & Son (William F and Clarence W Bohm), props The Bohm Mortuary, h 308 E Main
 " William F (Lina M), (W F Bohm & Son), h 308 E Main
 Boies Ralph C (Ella M), auto repairing rear 19 State, h 31 Lyon
 Boldt Barbara, student, r 638 E Main
 " Charles C, farmer, h 638 E Main
 Bolenda Bertha M, opr E N R Co, r 171 Pearl
 " Helen, r 171 Pearl
 " Joseph (Mary O), lab, h 171 Pearl
 Bolt Beulah M, sten N L & O P Co, r 146 Elm
 " Eliza S, wid George M, r 655 E Main
 " Hattie A, wid Eugene, h 141 Bank
 " Ida F, wid Fred M, r 46 Tracy av
 " Mary A, wid William H, h 146 Elm
 " Nicholas, retired, r 141 Bank
 Bolton Glen (Irene M), dist rep N L & O P Co, h 20 Woodrow rd
 " Mary L, wid George, h 22 Columbia av
 Bommer Roger, musician, r 215 Washington av
 Bon Ton Millinery, Batavia Shoppe Inc prop, 92 Main

- Bona Fide Club, 9 Jackson
 Bonacore Carmella Mrs, r 631 Ellicott
 Bonarrigo Angelo (Mary D), h 240 Ellicott
 " Benjamin (Rose M), h 11 Goade pk
 " Carmela A, wid Joseph, h 117 Liberty
 " Carrie, r 11 Goade pk
 " Joseph, student, r 11 Goade pk
 " Joseph B, prop Bonarrigo's Restaurant and Bonarrigo's Bowling Hall, r 240 Ellicott
 Bonarrigo's Bowling Hall, Joseph B Bonarrigo prop, 238-240 Ellicott
 Bond Joseph M (Helen W), prop Bond Tire & Battery Co, h 385 W Main
 " Tire & Battery Co, Joseph M Bond prop, 385 W Main
 Bonhurst Lena A, wid August, r 32 Franklin
 Bonin Louis, linotype opr B T Pub Co, r 12 Lincoln av
 Bonner Bertha O, r 21 N Spruce
 " Mary E, r 21 N Spruce
 " Samuel W (Stella J), h 21 N Spruce
 " Stella J (Mrs Samuel W), emp Children's Home Asso of Batavia, h 21 N Spruce
 " Stella R, student, r 21 N Spruce
 Boorum Glenn (Mildred E), lab, h 46 S Main
 Booth Florence E, h 29 Summit
 " Fred S (Ida M), foreman B & N Y W Co, h 2 N Spruce
 " Guy S (Mary L), emp E N R Co, h 17 Pearl
BOOTH HERBERT I (Nina M), pres Bank of Batavia and treas Board of Education, h 47 Ellicott av
 " Julia May, chief librarian Richmond Memorial Library, r 29 Summit
 " Otto P (Ida M), r 19 Center
 " Phineas E, retired, h 19 Center
 " Webster P (Gladys C), emp Granger & Co, h 12 School
 " William H (Ida C), foreman state highway dept, h 82 S Main
 Bordner Carl, lab, r 21 Central av
 " Helen L, r 21 Central av
 " Lester, r 21 Central av
 " Sanford W (Anna B), (Bordner & Fanara), h 21 Central av
 " & Fanara (Sanford W Bordner and Louis R Fanara), barbers 38 Jackson
 Borkman Alice E, emp Cleveland, Ohio, r 7 Raymond av
 " Donald W, forest wkr, r 7 Raymond av
 " Lambert G (Georgia L), hoisting eng, h 7 Raymond av
 " Marian A, maid 26 Lewis av, r do
 Borrello Josephine D, wid John D, clk J J Newberry Co, r 34 Otis
 Borst Valentine F (Helen V), tool and die mkr, h 252 Bank
 Bort Harley (Florence M), patrolman, r 15 Morton av
 " J Harry (Delia), musician, r 5 State
 " Jessie G, wid James M, h 5 State
 " Mildred F, student, r 15 Morton av
 Borton Charles E (Lillie S), sexton First Presbyterian Church, h 12 Main
 Bossart Harry M, auto mech Bond Tire & Battery Co, h 8 Lyon
 Bosseier Rudolph J (Marion V), clk Oakfield Co, h 32 Vernon av
 Boston Quick Shoe Repair Shop (Nicholas Kasstanos and Paul F Kordon), 44 Main
 Bostwick Belle, r 116 North
 " Henry D (Cornelia P), teller Genesee Trust Co, h 11 Hart
 " Luceia M, wid Harris A, r 116 North
 Bosworth Frank S, v-pres B & N Y W Co Inc, res Brooklyn
 Botry Walter J, lab, r I Ferren pl
 Botts Frank W (Ina M), lab, h 22 Jefferson av
 " Merton F, lab, r 22 Jefferson av
 Boucher Harry E (Margaret M), clk P O, h 36 Lyon
 " Henry (Lottie), wood wkr B & N Y W Co, h 14 Pearl
 " Margaret T, mgr dry goods dept A G Henning, r 5 Washington av
 " William D (Mabel W), supt of mails P O, h 105 Bank
 Boughton William M (May E), emp Western N Y Motor Lines, r 129 Ross
 " Willis E (Helen), h 5 Columbia av
 Bousser Gertrude G, cashier Colgrove & Ryan, r 13 Liberty

- Bousser John C (Christina S), retired, h 13 Liberty
 " Joseph F, clk, r 13 Liberty
 Bouton Willis G, prop Quick Lunch, h 2 Jefferson av (7)
 Boyanizer Peter J (Alma L), mach, h 108 Ellsworth av
 Bowen Anna C C, h 210 E Main
 " Earl A (Pearl M), opr Municipal Plant, h 41 Washington av
 " Elmer B (Lola V), signalman N Y C R R, h 12 Elmwood av
 " Helen E Mrs, r 46 Kingsbury av
 Bower Alice B, sten The Daily News, r 410 E Main
 " Arthur F (Frances J), mach M-H Co, h 33 Oak
 " Edward H, emp New York, r 410 E Main
 " Henry P (Kate M), retired, r 16 Harvester av
 " May W, wid Fred J, h 410 E Main
 Bowers Joseph H (Martha J), steamfitter, h 130 Bank
 " Lewis W, cutter E N R Co, r 130 Bank
 Bowland—see Baudanza
 Bowman Andrew J (S Elizabeth), retired, h 9 Trumbull pkwy
 " Louise S, wid Charles P, h 72 Main
 " Rose Mrs, r 154 Bank
 Boyce Betsey, wid Adelbert, h 34 State
 " Clarence K (Bunce S), power shovel opr, h 212 Bank
 " George W, emp E N R Co, r 55 Tracy av
 " James C, r 8 Seneca av
 " John R, emp P W M & Son, r 55 Tracy av
 " Mathilda E Mrs, h 55 Tracy av
 Boyd Alice M, wid Thomas, r 5 Montclair av
 " Harry S (Marjorie E), lab, h 5 Eleanor
 Boylan Minnie N Mrs, r 3 Morton av
 Boyle Cora M, wid Patrick H, charwoman P O, h 10 Edward
 " Donald T, lab, r 10 Edward
 " Emerson, student, r 10 Edward
 " Harriet V, emp P W M & Son, r 10 Edward
 " James E (Jean), emp P W M & Son, r 158 Ross
 Bradford A Nelson, student, r 158 Ross
 " Dorothy M, student, r 158 Ross
 Bradley Burt (Loretta P), carp N Y C R R, h 3 Lacrosse av
 " Charles Clifton (Alice S), retired, h 21 Ross
 " Charles Clifton Jr, optometrist 96 Main, r 21 Ross
 " Emma A, wid Gardner, h 28 Trumbull pkwy
 " James, lab, r 19 Holland av
 " Neil C (Gertrude), salesman Burt W Welch, h 12 Lyon
 " Olin (Olive M), emp Simond's Garage, r 3 Lacrosse av
 Bradway Edith M, wid John F, h 11 Ganson av
 " Frank F, emp P W M & Son, r 11 Ganson av
 " Ward H (Alice M), clk Oakfield, h 67 S Main
 Brainard Frances E, teacher B H S, r 410 E Main
 " May (Mrs Merritt J), clk J C Peuney Co, h 209 Ross
 " Merritt J (May), lab, h 209 Ross
 Branche C L & Son, Clarence L Branche prop, garage 143-145 W Main
 " Clarence L Jr, clk 101 W Main, r 145 do
 " Clarence H, salesman C L Branche & Son, h 145 W Main
 " Harland H, gas sta attd Warner-Quinlan Co, r 145 W Main
 Brandstetter Joseph W (Beatrice M), 1st sgt state police, h 56 Montclair av
 Brandt Grace A, wid Albert E, r 31 Redfield pkwy
 Branton Alfred J (Elizabeth F), auto mech, h 334 W Main
 " John A (Isabelle K), prop Branton's Hygienic Dairy, h 12 River
 Branton's Hygienic Dairy, John A Branton prop, 12 River
 Brast G Marjorie, bkpr The Daily News, r 346 W Main
 " George J (Grace M), tool mkr M-H Co, h 346 W Main
 " Ray Leo O, lab, r 145 Jackson
 Brayer Edward H, head teacher N Y S S B, r do
 Brayley Ernest L (J Anna), prop Brayley Motors, h Pearl st rd, R D 2
 " Lines J, auto mech Brayley Motors Co, h 343 W Main
 " Motors Co, Ernest L Brayley prop, sales and service 343 W Main

- Brayley Raymond E (Irene), emp Brayley Motors Co, res Pearl st rd, R D 4
 " Raymond F (Beatrice), emp Goodbody & Co, h 206 Washington av
 Brecht Richard A, r 669 E Main
 Breese L Warren (Pauline S), (Lee Breese & Son), h 306 W Main
 " Lee A (Valera A), (Lee Breese & Son), h 12 Lyon
 " Lee & Son (Lee A and L Warren Breese), gasoline and oil 206 W Main
 Brenkus Edward W (Irene N), lab, h 3 Dawson pl
 " Frank (Mary), truck driver, r 1 Florence av
 " Mary, wid John, h 1 Florence av
 " Paul J, farmer, r 1 Florence av
 Brennan Helen, nurse St Jerome Home, r 14 Bank
 Brennan Joseph M (Helen), foreman J H & Sons, h 144 Ross
 Brewer A Gladys, student, r G A Rupp
 " Clark D (J Anna), eng B Water Wks, h 21 Pringle av
 " Daniel W (Helen K), eng N Y C R R, h 53 Tracy av
 " Eugene R (Ruth A), eng N Y C R R, h 6 Lincoln av
 " G Francis, messenger First Nat Bank, r 21 Pringle av
BREWER GERTRUDE V bkpr Piehl Hardware, r 21 Pringle av
 Brewster Fred, mach R E C Mfg Wks, r 10 Walker pl
 " Helen M, emp P W M & Son, r 13 Manhattan av
 " J Ernest (Emma M), collector Mutual Clothing, h 13 Manhattan av
 " Ruth V, emp P W M & Son, r 13 Manhattan av
 Brice Francis J, carp, r 26 Oak
 " Irene E, sten Batavia Laundry, r 26 Oak
 " J Raymond (Irene L), laundry wkr, h 240 W Main
 " John J (M Agnes), carp, h 26 Oak
 " Maurine H, emp F E M & Sons, r 26 Oak
 Brickman Aaron E, foreman, h 548 E Main
 " Linnie B, lab technician St Jerome's Hosp, r 548 E Main
 " Peter A, foreman M-H Co, h 106 Vine
 " Stephen H (Jennie B), cab mkr B & N Y W W Co, h 544 E Main
 " Wilson R, r 544 E Main
 Bridge Russell J (Irene C), v-pres-sec Kozac (Inc), h 134 Jackson
 " Thomas J (Annie S), retired, h 135 1/2 Jackson
 Bridgeman Howard, student, r 107 Washington av
 Briggs Ralph W (Ruth S), emp M-H Co, r 107 Washington av
 Brill Leonard M (Catherine A), barber 40 Main, h 17 N Spruce
 " Mary, emp R E C Mfg Wks, r 11 Trumbull pkwy
 " Vincent J (Erma M), carp, r 13 Lyon
 Brin stool James J (Ella I), retired, h 17 Montclair av
 Bristol Frank R (Mae M), dentist 4 Bank, h do
 Bristow Marjorie C Rev, wid William, h 512 Ellicott
 Britt Charles, emp Bonarigo's Bowling Hall, r 240 Ellicott
 " Gerald F (Mary L), emp 20 State, h 19 Redfield pkwy
BRITIAN ALFRED REV (Louise M), rector emeritus St James Episcopal Church,
 res inq do
 Britton Francis R (Ethel S), acct P W M & Son, h 22 Verona av
 " John W (Ida M), lab, h 117 Pearl
 " Kenneth J, student, r 117 Pearl
 Broadbrooks Elizabeth S, wid Peter, h 8 S Main
 Brocker Stephen (Velma M), fireman B F D, h 21 S Lyon
 " Velma M (Stephen), office sec 4-H Club, h 21 S Lyon
 Brockway Clarence A (Mabel A), bkpr E N R Co, r 110 W Main
 Broderick Bernard J, emp L V R R, r 635 Ellicott
 " Kenneth J, r 635 Ellicott
 " Leo F, prop Leo's Service Station, r 635 Ellicott
 " Mary A, wid James W, h 635 Ellicott
 Brohman William S (Hannah D), farmer, h 9 Lyon
 Brookmier Frank, mach B S P C Co, r 13 Spruce
 " George (E Grace), capt Sta 2 B F D, h 60 Pearl
 Brooks Arthur L (Dorothy), agt Prud Ins Co, res Scottsville
 " Charles L (Gertrude), carrier P O, h 1 Lacrosse av
 " Frank E (Genevieve B), pres Techni-Seal Co, h 14 Franklin
 Brothers Mary E, nurse 133 Bank, r do
 Broughton Edmund L, priv state police, r 669 E Main

- Brown Albert E (Franc E P), retired, h 27 Ellicott av
 " Anna E, teller Genesee Trust Co, res W Batavia
 " Beulah M Mrs, emp B T Pub Co, r 114 North
 " Cassius S (Kate B), feed and grain 2-4 Colorado av, res W Bethany
 " Edward E (Blanche), clk, h 19 Fisher pk
 " Everett F (Celia), carp, r 28 Warren
 " Everett F (Adelpha D), cond N Y C R R, h 260 W Main
 " Fred H (Mary C), taxi service 32 Jefferson av, h do
 " Frederick H, r 32 Jefferson av
 " G Forrest (Anna W), chief of police, h 32 Oak
 " George (Mary), h 304 Washington av
 " Harry, student, r 112 Harvester av
 " Ira G, salesman, r 19 Fisher pk
 " J Leo, grocer 18 Main, r 136 W Main
BROWN JAMES H (Julia M), asst funeral director C W Hartley, h 1 Union
 " Jennie S, wid Miles, r 19 Fisher pk
 " Jeremiah E, city editor Daily News, r 136 W Main
 " Julia C, bkpr Carlton M Slight, res Batavia, R D
 " Lester N, cost clk E N R Co, r 34 Jefferson av
 " Lew R (Rose), prop Mutual Clothing Co, h 58 Oak
 " Mabel E Mrs, h 7 Vernon av
 " Margaret C (Mrs Howard J), clk F W Woolworth Co, res Linden
 " Margaret E, wid John S, h 136 W Main
 " Mary, wid Nicholas, r 9 Summit
 " Mary J, teacher B H S, r 146 Ross
 " Mary M, wid Joseph, h 114 State
 " May, wid Matthew S, h 34 Jefferson av
 " Nellie H, wid Edward A, h 3 Hull pk
 " Paul B, furniture repairing 18 Elm, r do
 " Sarah E, wid Stephen W, h 2 Thomas av
 " Thomas A (Lena L), lab, h 129 Trumbull pkwy
 " Victor H (Pearl H), mech Charles Mancuso & Son, h 121 Elm
 " William F (Monica S), exec officer A B C Board, h 42 Redfield pkwy
 " William G, student, r 32 Jefferson av
 Brownell Nelson H (Lena H), clk E J Beardsley Co, h 12 Dellinger av
 Brumber Donald E, printer B T Pub Co, r 633 Ellicott
 " Louis G (Ella B), muck farmer Elba, h 633 Ellicott
BRUMSTED EDWARD H (Rose F), (McAlpine, Brumsted & Co), h 9 Summit
 " Ethel M, teacher B H S, res R D 2
 " Walter R (Maud), carp, r 3 East av
 Brundage Grace M, clk, r 98 Union
 " Mary A, wid Orrin J, h 98 Union
 " Paul, mgr J C Penney Co, r 24 Lewis av
 Brunnells Esther W, dom 45 Ellicott av, r 389 W Main
 " John H, h 389 W Main
 " Raymond, lab, r 1 Walnut pl
 Brunson Fannie M, h 31 Summit.
 Bryant Alberta, r 56 Oak
 Brydges Mary, wid John R, r 10 Walnut
 Bryson Dental Laboratory, Roy W Bryson prop, mechanical dentistry 62 Main
 " Roy W, prop Bryson Dental Laboratory, r 62 Main
 Brzezowski Louis (Frances C), retired, h 40 Otis
 " Myron (Rose K), emp Colgrove & Ryan, h 22 William
 " —see Brasky
 Buchanan Betty, hskpr 414 E Main, r do
 Buchholz Carl John, sten LeRoy, r 122 Ross
 " Clarence J, r 21 Redfield pkwy
 " Clarence L (Marion A), sec Genesee Stone Products Corp and sec-treas
 " B Washed Sand & Gravel Co, h 13 Lewis av
 " Dorothy M, teacher Jamestown, r 554 E Main
 " Edward C (Alice), clk county clks office, h 253 Bank
 " Edward F (May H), emp East End Hotel, h 9 S Spruce
 " George W (Bertha L), prop John Buchholz & Sons, h 554 E Main
BUCHHOLTZ HERMAN H (Mary L), pres Genesee Trust Co, h 217 Washington av

MORTICIANS - 211 E. Main St.

H. E. TURNER & CO., INC.

PHONE 68

1934—BATAVIA DIRECTORY—1934

- Buchholz John F (Amelia A), carp 554 E Main, h 21 Redfield pkwy
" John & Sons, George W Buchholz prop, cont and builders 554 E Main
" Pearl M, wid Charles, agt G County Children's Court, h 38 Ellicott av
" William C (Fredrika), retired, h 658 E Main
" William J (Mary S), carp, h 122 Ross
Buckel Clarence C (J Arlene), detective N Y C R R, h 6 Union
" Cora E, wid Charles, h 203 Washington av
" Howard C, r 203 Washington av
" Leo H (Lois J), emp Batavia Laundry, h 4 Florence av
Buchholz George J (Helen M), h 8 School
Buckley Dennis J (Catherine D), emp B & N Y W Co, h 35 Lyon
" Donald J (Gertrude A), emp Silver Slipper, h 14 Jackson
" Ella F, chiet opr N Y Tel Co, h 115 Jackson
" Florine F, emp E N R Co, r 232 W Main
" Mary C, opr P W M & Son, h 108 Evans
" Norah M, wid Michael, r 115 Jackson
" Stephen D, railroad wkr, h 29 Dellinger av
Buddle Margaret A, r 23 Summit
Buddenhadgen Fred, clk LeRoy, r 141 State
" Viola E Mrs, h 36 State
Buell William E (Bessie M), acct M-H Co, h 44 Manhattan av
Buetler Josephine, wid John, r 119 State
Bukewicz Stanislaw (Victoria T), lab, h 230 Swan
Bullock Dorothy H, student, r 7 Cedar
" Harry (Marie), emp Miss Batavia Diner, h 420 E Main
" John, lab, r 50 Ellicott
" William R (Hazel M), prop Miss Batavia Diner, h 7 Cedar
Bunce Alton R (Emma E), deputy county treasurer, res Pavilion
Bundrock William J, barber 70 Main, r do
Burbe Clinton W, inneman, r 10 Chase
" Francis G, plumbers helper W Porter, r 184 Oak
Burch C Edwin (Phyllis A), emp Fargo Dairy, h 268 Ross
Burdett Carrie E, wid George F, r 33 Kingsbury av
" Dorothy E, wid Fay C, r 18 Lincoln av
" Ralph J (Susan G), director of welfare, h 33 Kingsbury av
" Richard E, student, r 33 Kingsbury av
Burdick Willis C (Irene R) cond N Y C R R, h 34 Jackson
Burke Cecelia, emp St Jerome Hosp, r 418 Ellicott
" Grace, h 68 Tracy av
" Irene L, teacher, r 249 Bank
" John (Caroline), farmer, h 418 Ellicott
" John M (Anna), foreman D D C Co, h 8 Lewis pl
" Meth, student, r 418 Ellicott
" Minnie D, wid Charles J, nurse 1 Cedar, h do
Burkel Don P, gas sta attd, r 34 Columbia av
" John (Augusta), Genesee County Dist Crazy Water Crystals, h 19 Oak
Burkhardt Catherine F, wid Martin, h 23 School
" Martin (Jennie), rooms 68 Main, h 70 do
" William, emp B Metal Products Corp, r 23 School
Burleigh Bessie A, wid Myron E, h 42 State
" Edward H, emp N L & O P Co, r 42 State
Burling Walter H (Dorothy M), mach M-H Co, h 14 Harvester av
Burlingame Charles, cigar mfr 5 Jackson, r do
" Mary S Mrs, dom, h 10 Center
Burnett Charles G, sgt state police, r 669 E Main
Burns A March (Grace I), salesman, r 13 Swan
" Albert J, foreman R E C Mfg Wks, h 13 Swan
" Anna E, wid William R, h 266 W Main
" Archibald B (Harriet), lab, h 10 Main
" Catherine M, wid Robert F, h 115 Swan
" Dorothy A, emp Buffalo, r 4 Court (4)
" Edna G, teacher, r 3 Elm
" Edward F (Anna C), laundryman Hotel Richmond, h 4 Pan American bldg (4)

Adam, Meldrum & Anderson Co.

"Things to Wear and Things for the Home"

1934—BATAVIA DIRECTORY—1934

59

- Burns John J (Ethel G), clk Redmond Bros, h 4 Maple
" Joseph B, student, r 18 Dellinger av
" Lorenzo J (Kathryn L), ins 98 Main and postmaster, h 18 Dellinger av
" Marion C, student, r 4 Maple
" Mary S, teacher Robert Morris School, h 142 Bank
" Patrick J, cigar mfr 18 Elm, r 10 Chase
" Val Jean F (Edna G), teacher B H S, h 3 Elm
Burr Frank F, retired, r 522 E Main
" John H (Lena H), retired, h 30 Pringle av
" Justina C, wid Fred H, h 27 Dellinger av
Burrill Arba M, mason, h 48 State
" Hazel I, sten M-H Co, r 17 Vine
" Marcious, retired, r 48 State
Burrughs Bradford J (Elizabeth M), lawyer 12 Main, h 21 Porter av
" Donald P, pressman F E M & Sons, r 22 S Main
" Fred C, carp, r 70 Main
BURROUGHS WALTER H gas sta mgr Athoe Motors, res E Pembroke
Burt Clara E, wid Maurice, r 162 Bank
" Donald G, gas sta attd Pearl c River, r 6 Walnut
" G Alonzo, farmhand, r 32 Columbia av
" George A (Anna M), lab, h 32 Columbia av
" Harold F (Bertha L), lab, r 32 Columbia av
" Herbert H, lab, r 32 Columbia av
" L Mae, wid Roderick O, cook 14 W Main, r do
" Leslie M (Ada A), salesman, r 8 Kingsbury av
Barton John W (Mary B), carp, h 33 Holland av
BURTSSELL G W pres The Massey-Harris Co Inc, res Toronto Ontario, Canada
Burwel Fireproof Garage, Burt W Welch prop, Russell pl
Bush James A, horse trainer, r 36 State
" Lawrence S (Laura E), salesman, h 63 Lyon
Bushman Frank F (Mildred E), carp, r 652 E Main
" Rosamond I, sten sec N L & O P Co, r 2 North
Business and Professional Woman's Club, pres, A Barbara Boatfield; sec, Julia C Brown; treas, Hildegard Randall. Meets first Thursday of month at 6:30 p m
Butler August, lab, h rear 19 Prospect av
" Carlton S, lab, r Majestic Home
" Frank D (Hattie D), retired, r 16 Howard
" George F (Mattie M), lab, h 623 Ellicott
" John J (Mary), wood wkr, h 29½ Vine
" Vera M, r Majestic Home
" W Henry (Clara E), chauffeur, h Majestic Home
" Warren J, tel opr N Y C Depot, r 23 Prospect av
Butmore Louis (Josephine), plumber W G Maney, h 25 Fisher pk
Buxton Louise, h 139 Summit
" Walter W (Harriet W), gasoline and oils 61 Jackson, h 16 Ellicott av
Buynevitz Alfons J (Ida H), painter M-H Co, h 2 Graham
" Stella J, r 2 Graham
" Violet E, r 2 Graham
Byram Edith, emp P W M & Son, r 107 Jackson
Byrnes Lawrence J (Gertrude F), eng N Y C R R, h 32 Cedar
CABORN FRED T (Ethel M), com trav, h 9 Buell
" George S (Charlotte), emp E N R Co, h 511 E Main
" John E (Mabelle F), clk Everett J Mullien, r 3 West av
" Mabelle F (Mrs John E), sten M-H Co, r 3 West av
" Marion I, r 9 Buell
Caccamise Anthony, lab, r 22 Maple
" George (Mary E), mason, h 22 Maple
" Josephine, r 22 Maple
Cacner Charles W (Laila M), pump mech Atlantic Refining Co, res E Bethany, R D 1
" Doris E, emp P W M & Son, r 167 Ross
" Frank J (Emily), lab, h 167 Ross
" George C, r 167 Ross

- Caconer Lloyd L (Marian L), emp Atlantic Refining Co, r inq do
Cadioux Irene L Mrs, r 70 Manhattan av
" Louis J, r 10 Clifton av
Cady Otis T (Vivian C), emp M H Co, h 1½ Columbia av
Cahoon Mame J, r 8 North
" Sarah L, wid Bert, h 8 North
Cain Ethel F, r 7 Lyon
Caito Antonio (Josephine M), (Caito Bros), h 11 Kingsbury av
" Augustine A (Anna), prop Batavia Liquor Store and (Cato Bros), h 14 Porter av
" Augustine (Francesco), retired, h 73 Union
" Bros (Paul, Augustine and Antonio Caito), groceries and fruits 58 Main
" Frances, student, r 11 Kingsbury av
" Frances A E, r 21 Summit
" Josephine M, clk 58 Main, r 21 Summit
" Paul (Lucy), salesman, h 31 Union
" Samuel A (Providence A), clk 58 Main, h 21 Tracy av
" Sarah J, student, r 21 Tracy av
Caldwell Arthur B (Myrtle H), pres Genesee Stone Products and pres Baravia Washed Sand & Gravel Co, h 9 Norris av
Calkins Charles H, lab, r 18 Harvester av
" Ella A, wid Charles, h 158 Bank
" Henry E (Lena L), lab, h 18 Harvester av
Call Albert H (Effie M), retired, h 528 E Main
" Albert H (Amelia), music teacher 27 Bank, h do
" Earl L, r 12 Ellicott av
" Emma A, wid Frank, h 12 Ellicott av
" Lily B, r 17 S Lyon
Callahan Bros (Vincent R and John K Callahan), meats 26 Main
" Francis P (Gertrude), lab, h 513 E Main
" Gertrude (Mrs Francis P), bkpr S S Kresge Co, h 513 E Main
" John K (Callahan Bros), r 27 Bank
" Kathryn, emp Batavia branch Rochester Bus Institute, r 3 Tracy av
" Kathryn, emp E N R Co, r 107 Jackson
" Margaret A, wid John S, h 27 Bank
" Mary C, teacher N Y S S B, r 27 Bank
" Nora L, clk, r 327 W Main
" Olive M Mrs, waitress, r 7 Cedar
" Rose H, h 39 Porter av
" Thomas J, shoe wkr, r 27 Bank
" Vincent R, (Callahan Bros), r 27 Bank
Callan Agnes, wid Patrick J, h 508 E Main
" Charles H, salesman, r 43 Montclair av
" Clarence J, prop Cottage Restaurant, h 4 State
" Frank J, prop Railroad wkr, r 43 Montclair av
" Helen L Mrs, r 23 East av
" Lawrence M (Emma A), cook N Y C R R, h 6 Goade pk
" Loren J, r 58 Jackson
" Mary E, waitress 214 E Main, r 58 Ellicott
" Mary J, r 558 E Main
" Peter W, retired, h 43 Montclair av
" Peter W (Katherine), prop Ellicott House, h 60 Jackson
" Raymond N (Ruth H), salesman, r 43 Montclair av
" Thomas (Jennie E), h 5 Jackson
" Thomas P, r 58 Jackson
Callen Adelle, wid William W, h 9 Tracy av
Calteaux John M, retired, r 141 Bank
Campagna John, section hand N Y C R R, r 23 Maple
" Joseph (Mary R), section hand N Y C R R, h 23 Maple
" Nicholas R, r 23 Maple
" Santa, r 23 Maple
Campbell Charles F (Alice S), retired, h 13 S Main
" Clarence M (Hazel), engraver Francis & Mead, h 121 Tracy av
" George W (Pearl F), ems L St L & C Co, h 15 Kibbe av

- Campbell George W Jr, r 15 Kibbe av
" Henry R, r 15 Kibbe av
" Herbert C, lab, r 15 Kibbe av
" Walter A (Alberta F), groundman N L & O P Co, h 40 Manhattan av
" William A (Ethel L), auctioneer and emp J E Sherwood & Son, h 5 La-crosse av
Campobello Leonard, student and emp The Delbridge Press, r 15 Thorp
" Russell, student, r 15 Thorp
" Salvatore (Margaret M), lab, h 15 Thorp
Cancey Ashton W, retired, r 418 E Main
Cannella Jennie Mrs, r 228 Liberty
Cancyan Katherine, r 230 State
Canty Alice F, teacher LeRoy, r 203 Ross
" Daniel V, emp Hotel Richmond, r 23 Manhattan av
" Helen M, emp Family Theatre, r 203 Ross
" J Edward, r 23 Manhattan av
" John W, linotype opr B T Pub Co, r 203 Ross
" Joseph C, emp P W M & Son, r 203 Ross
" Mary M, r 23 Manhattan av
" Sadie M, clk Met Life Ins Co, r 118 W Main
" Thomas C (Anna E), emp P W M & Son, h 23 Manhattan av
" Thomas G, ins agt, r 23 Manhattan av
" W Arthur, foreman shoe factory, h 203 Ross
" William J, emp P W M & Son, r 23 Manhattan av
Capello Antonio (Frances S), retired, h 30 Maple
" Carmella, clk J J Newberry Co, r 30 Maple
" Dennis, r 30 Maple
" John, lab, r 30 Maple
" Lucie, clk J J Newberry Co, r 30 Maple
Caposela Anthony (Filomena C), h 38 Otis
" James, lab, r 38 Otis
" Sebastian, lab, r 38 Otis
Cappiello Ralph M (Antoinette), foreman D D C Co, h 7 North pk
Caprio Emedio, watch mkr 40 Jackson, r 6 Kibbe av
Capurro Frank (Lucy C), carp, h 107 Hutchins av
Carey Alabama T, wid Trumbull, h 318 E Main
" Edward T (Maude M), upholsterer 466 Ellicott, h do
" Everett E, r 466 Ellicott
Cargill Harry C (Bertha M), emp H E Turner & Co, h 211 E Main
" Helen M, bkpr C L Carr Co, h 11 Walnut
Carlin Walter T (Sarah), mech, h 532 E Main
Carlino Jennie, emp J H & Sons, r 113 Elm
" John (Anna T), lab, h 9 Hall
" John Jr, r 9 Hall
" Mary, r 9 Hall
Carlisle Roy J (Mary E), elec N Y C R R, h 135 Jackson
Carlo Eleanor M, r 125 S Main
" Leo P (Jennie F), lab, h 141 Liberty
" Thomas A (Marguerite L), salesman Rochester, h 6 Pringle av
Carlson Jennie, emp Blue Bird Inn, r do
Carmen's Beauty Parlor, Mrs Minnie A Yates prop, 66 Swan
Carmichael Dayton J (Gladys T), carrier P O, h 26 Prospect av
" Ira J (Blanche M), h 7 Fisher pk
" Jay R, private state police, r 669 E Main
" Merle C, clk McAlpine, Brumsted & Co, r 7 Fisher pk
Carmody George A (Katherine N), carp, h 103 Oak
" James S, groundman N L & O P Co, r 43 Vernon av
" John J (Madelyn), truck driver, h rear 213 Bank
" Rose L, sten, h 99 Oak
Carnahan C Vernon (Florence M), plumber W G Maney, h 125 Trumbull pkwy
" Florence M (Mrs C Vernon), opr N Y Tel Co, h 125 Trumbull pkwy
" Gordon E (Eva C), credit mgr M-H Co, r 5 Thomas av
Carney Alexander J (Mary A), caretaker fair grounds, h Olin av
" Edward, metal polisher, r 10 Hutchins pl



CARS | ATHOE MOTORS, INC. | AND TRUCKS | W. MAIN AND LYON
Towing and Wrecking. 24-Hour Service. Phone 1335

62 1934—BATAVIA DIRECTORY—1934

- Carney Veronica, clk Whelan Drug Stores, r 10 Hutchins pl
- Carpenter James G (Clara M), foreman N L & O P Co, h 20 S Main
- " Phyllis A, student, r 20 S Main
- " Sarah D, wid Wilbur E, furrier 113 Washington av, h do
- " Sarah E, wid Cyrus, h 1 Jackson (7)
- CARR C L CO THE department store 101-103 Main, Claude L Carr prop, W Vance Carr assoc, see p 22**
- " Charles E, asst mgr F W Woolworth Co, r 11 Bank
- " Christine L, r 5 Summit
- " Claude F (Sarah M), sub carrier P O, h 231 Bank
- CARR CLAUDE L (Harriet), prop The C L Carr Co, h 5 Summit**
- CARR FREDERICK D (Marie T), surgeon and X-ray 73 Main, h 23 Thomas av, office hours 9-10 a m, 2-5 p m except Mon and Wed, 7-9 p m Tues, Thurs, Fri, Sat**
- " Hiram E, retired, h 47 S Main
- " J Gordon, student, r 5 Summit
- " Leigh S (Una B), gen cont 117 Walnut, h 47 S Main
- " Lewis B (Sophia), eng B Hosp, h 14 Tracy av
- " Lois J, student, r 39 Tracy av
- " Margaret L, student, r 23 Thomas av
- " Mary B, student, r 23 Thomas av
- " Ralph H, r 14 Tracy av
- " Robert Mrs, teacher B J H S, res Putnam Settlement
- " Robert W (Lucille), elec dept mgr, res R D
- " Sarah M (Mrs Claude F), emp E N R Co, h 231 Bank
- " Virginia A, student, r 5 Summit
- CARR W VANCE (Anna B), asso The C L Carr Co, h 39 Tracy av**
- " William S Rev, pastor West Bethany Baptist Church, h 303 Washington av
- " Willis C (Mercy L), grocer 227 W Main, h do
- Carroll Anna M, wid Edward J, h 34 1/2 State
- " Edward S, r 34 1/2 State
- " Kathryn G, r 34 1/2 State
- " Marion E, sten, r 34 1/2 State
- " Rose A, wid Thomas H, h 28 Walnut
- " William J (Agnes C), teaming 535 E Main, h do
- Carson Bertha M, wid Edward, h 35 Tracy av
- " Clayton W, r 35 Tracy av
- " Fannie L, wid John, r 7 Washington av
- " Florence, dental asst, 124 Main, res R D 2
- " George G (Jennie M), shop wkr, h 6 Lacrosse av
- " Helen S Mrs, phone opr D D C Co, r 20 Colorado av
- " Irene J, bkpr R L H & P Co, r 35 Tracy av
- " Margaret E, r 7 Washington av
- " Maude Mrs, practical nurse, h 412 E Main
- " Robert T (Quality Shoe Repair), h 7 Washington av
- " William B, clk M-H Co, r 35 Tracy av
- Cartenuto Michael J (Lucy R), lab, h 62 Swan
- Carter Charles H (Grace), bricklayer, h 116 State (5)
- " Charles L, bkpr Bank of Batavia, res Pavilion
- " Frank W (Mary Belle), carp, h 9 Raymond av
- " James A Rev, asst pastor St Anthony's Church, r 42 Central av
- " Laura M, wid Riley, h 174 Ross
- " Lillian G, dom, r 116 State (5)
- Caruso Anthony (Frances C), lab, h 118 Liberty
- " Carmello, r 118 Liberty
- " Joseph, lab, r 118 Liberty
- Carver Janeth, nurse, r 65 Redfield pkwy
- " Kenneth W, asst mgr J J Newberry Co, r 65 Redfield pkwy
- " William E (Louis B), dist suptv N Y Tel Co, h 65 Redfield pkwy
- Case Archie J (Louise J), cont and builder 226 State, h do
- " Augusta M Mrs, forelady E N R Co, h 10 Cone
- " DeForest, painter, r 10 Cone
- " Donald P, lab, r 7 Prospect av
- " Elmer G (Frances R), blacksmith helper N Y C R R, h 6 Davis av
- " Everett C (Florence C), lab, r 34 Otis

Dawson's Chanced, Cleaned Coal
W. C. DAWSON 38 Maple, Batavia, N. Y. Phone 780

1934—BATAVIA DIRECTORY—1934 63

- Case Florence (Mrs Everett C), clk J J Newberry Co, r 34 Otis
- " Gertrude M (Mrs Laverne), emp F E M & Sons, h 215 W Main
- " Harold J (Estelle B), mech N Y C R R, h 65 1/2 Lyon
- " Hazel M, mgr Sameison's, r 41 Montclair av
- " Joseph H (Margaret M), mech N Y C R R, h 41 Montclair av
- " Laverne (Gertrude M), emp F E M & Sons, h 215 W Main
- " Lester C, carp, r 226 State
- " Norman S (Evelyn), carp A J Case, h 17 Hart
- " Steward D (Beatrice G), mgr Larkin Stores, h 12 Raymond av
- " W Stuart, designer, r 226 State
- Casey A Kathryn, sten Prud Ins Co, r 4 Kingsbury av
- " Allan J, salesman Buffalo, r 124 Ross
- " Anna C, wid Patrick, h 8 S Spruce
- " Arthur M, truck driver, r 401 S Jackson
- CASEY CARTING CORP trucking 46 Jackson, pres-v-pres, treas John T Forsyth; sec, Helen T Forsyth, see back bone**
- " Christopher C (Della F), field mgr Home Owners Corp, h 132 Jackson
- " Francis C, sten Buffalo, r 4 Kingsbury av
- " Gertrude M, bkpr Murphy Bros, r 4 Kingsbury av
- " Helen A, sten Buffalo, r 108 Bank
- " Helen S, wid William J, dental hygienist, r 8 Vine
- " James E (Leora M), truck driver, h 36 Bank
- " John J (Anna M), clk Colgrove & Ryan, h 4 Kingsbury av
- CASEY JOHN P (Mary E), pres Genesee County Loan Association, h 307 Washington av**
- " John S, h 9 Thomas av
- " John T (Mary A), meat cutter Colgrove & Ryan, h 9 Porter av
- " Lawrence T (Dorothy V), lawyer 110 Main, h 19 Fairmount av
- " M Gertrude, r 9 Thomas av
- " Myrtle, wid John, h 124 Ross
- " Thomas J, lab, h 401 S Jackson
- " William C (Mary M), assessor, h 108 Bank
- " William J (Marjorie E), ticket and freight agt L V R R, h 127 Trumbull pkwy
- Cash George V, student, r 5 Ross
- " Nellie H, wid Roy, r 5 Ross
- " Paul H, student, r 15 Ellicott av
- Cashman John H, retired, h 50 S Main
- Caskey John B (Harriet E), treas L St L & C Co, h 324 W Main
- Cassidy George M (Mary B), farmer, h 31 Wiard
- " Mildred R, emp E N R Co, r 15 Jackson
- Casselberry Harry M, mech Ricketts Collision Service, r 32 Jackson
- Cassenti Charles (Sarah S), lab, h 23 S Lyon
- Cassidy Jennie G, bkpr Hiscutt Baking Co, r 137 Ross
- Castellet Joseph (Theresa M), lab, r 129 Swan
- Caster LeRoy L (Marion), truck driver Redmond Bros, h 538 E Main
- Castle Heiten, nurse St Jerome Hosp, r do
- Caswell William A, canner, r 3 Margaret pl
- Cater Elizabeth A, wid Charles W, h 1 Dawson pl
- Catholic Charities of Buffalo Inc, Genesee County Dist office 79 Main (208)
- " Daughters of America, Court St Rita No 554, G R, Mrs Stanislaus W Smith; V R, Mrs Joseph Anthony; historian, Helen F Clarke
- Meets 2nd and 4th Mon 8 p m, 215 E Main
- Catino Jacob (Jennie M), lab, h 22 Colorado av
- Catin Amelia Mrs, dom 41 William, r do
- Caton Glenn, salesman Athoe Motors Inc, res Oakfield
- " Louis H (Helen A), ry mail clk, h 128 Tracy av
- Caywood Alan S (Ruth), capt guard Attica Prison, h 110 Bank (7)
- Cecere Albert, emp Rochester, r 39 Liberty
- " Angelo M (Adeline S), farmer, h 39 Liberty
- " Anthony B (Anna P), undertaker 132 Liberty, h do
- " Joseph L (Helen M), emp N Y C R R, h 10 Maple
- " Mary R, emp J H & Sons, r 39 Liberty
- " Victor L, clk Goade & Flour, r 39 Liberty
- " William, barber, r 39 Liberty

ALSO SEE LISTING AND NAME INDEX FORSYTH TRUCKING CORP. see backbone

- Cecero—see Cecero
Cecero Anthony, r 321 Ellicott
" James (Pasqualina C), shoe repairing 117 W Main, h 418 Ellicott
" John J, r 321 Ellicott
" Mary G, r 321 Ellicott
" Michael (Nellie D), emp city, h rear 14 Hutchins
" Michael, r 321 Ellicott
" Rose, r 321 Ellicott
" Vito, lab, h 321 Ellicott
Cemeteries: Batavia Cemetery Assn, cemetery Harvester av, office 74 Main,
Fred A Lewis sec-treas
" Elinwood, Harvester av, pres, Charles E Shepard; sec-treas, John G
Torrance
" Grand View, Clinton, o c, supt, Charles B Annabal
" St Joseph's, 131-149 Harvester av, mgr, Rev T Bernard Kelly; sexton,
Roy Hinkson
Cericola Alexander, meat cutter Nicholas Colangelo, r 119 Liberty
Cesire Ysilda M, dom 20 Summit, r do
Cervone Amedeo (Margaret S), mach M-H Co, h 139 Jackson
" Irene E, student, r 15 Osterhout av
" Mary V, r 15 Osterhout av
" Peter (Amelia V), section hand N Y C R R, h 15 Osterhout av
Cesarano Antoinette M, wid Frank, h 412 Ellicott
" Joseph (Elnora V), auto repairing 107 Liberty, h 10 Hutchins
" Louis, lab, r 412 Ellicott
" Margaret, opr J H & Sons, r 412 Ellicott
" Nicholas (Frances B), emp 410 Ellicott, h 451 do
**CHAMBER OF COMMERCE exec sec, Dr Arthur E Martin, 65 Main (see Batavia
Chamber of Commerce), see p 15**
Chamberlain DeVillo H, private state police, r 669 E Main
" Edwin B, private state police, r 669 E Main
" Leo F (Elizabeth), guard Attica, h 26 Law
" Lloyd B (Catherine M), bus driver W N Y Motor Lines, h 15 Seneca av
Chambers John J (Helen S), private state police, h 19 Union
" Thomas (Catherine A), emp Syracuse, r 15 Montclair av
Champion Orra Belle, h 206 W Main
Chappell Dorothy, student, r 162 Summit
Chapin Horace H (Dedamona B), gen mgr R E C Mfg Wks, h 37 Ellicott av
" R E Mfg Works The, Raiph E Chapin prop, sheet metal specialties 29
Liberty
" Ralph E (Florence A), prop R E C Mfg Wks, h 39 Ellicott av
Chapman A Lucile, r 136 Trumbull pkwy
" C Leon (Margaret D), office mgr P W M & Son, h 241 State
" Dorothy, maid 14 Redfield pkwy, r do
" Robert W, student, r 136 Trumbull pkwy
" William H (Alice P), mach opr E N R Co, h 136 Trumbull pkwy
Chappell Cora B, wid George, h 13 Ellsworth av
" Mary J, wid Sheldon, r 308 Washington av
Chapple Charles E (Alice M), res mgr Tiernon & Co, h 25 Vernon av
" Edwin L, salesman, r 25 Vernon av
" Frances S, dramatic critic, r 25 Vernon av
" George C (Ruth E), passenger agt N Y C depot, h 205 W Main
CHAPPLE GRACE E sten Metropolitan Life Insurance Co, r 25 Vernon av
Charvella Anna, emp J H & Sons, r 15 Highland pk
" Joseph (Grace M), emp Mancuso's Bowling Alley, h 15 Highland pk
" Sam, r 15 Highland pk
" Sebastian (Lena D), emp D C Mancuso, h 5 Watson
Chase George R (Viola F), veterinary surgeon 350 W Main, h do
" Ida C, wid Burt, h 438 E Main
" Jennie M, wid Edwin T, r 40 Ellicott av
" Wilbur D, dist supy Farm Credit Administration, res Lewiston rd
Chatt Andrew, lab, r 75 Franklin
" Anthony, lab, r 75 Franklin

- Chatt Daniel M (Irene O), lab, h 236 W Main
" Frank, student, r 75 Franklin
" Mary M, wid Joseph, h 75 Franklin
" Peter A (Mildred A), lab, h 12 Hall
" Thomas (Jessie P), emp D C C Co, h 75 Franklin
Checker Board Feed Supply, Max W Schoenfeld prop, 7 State
Cherella Charles Y, emp Frank Thomas, r 6 Hutchins
" Fannie M, opr J H & Sons, r 6 Hutchins
" Frank J, lab M-H Co, r 6 Hutchins
" Joseph (Dolores N), moulder M-H Co, h 6 Hutchins
Chiaccio Carmella, r 126 Swan
" Dominic (Anna M), h 126 Swan
" Joseph D, student, r 126 Swan
" Lena P, opr J H & Sons, r 126 Swan
" Mary E, opr J H & Sons, r 126 Swan
" Nicholas S, r 126 Swan
Chiaromonte Thomas (Josephine B), barber shop 301 Ellicott, h 125 Liberty
Chiarolanzo Frances J, opr J H & Sons, r 32 Cherry
" Frank A, r 32 Cherry
" Guy (Lola), emp M-H Co, h 32 Cherry
" Josephine A, r 32 Cherry
Chujanowski Anthony, lab, h 17 Warren
Chilano Josephine, student, r 231 Liberty
" Mary D, r 231 Liberty
" Pietro (Celia G), lab, h 231 Liberty
" Russell L, lab, r 231 Liberty
Children and Misses Specialty Shop, Herbert B Smith prop, 110 Main
Children's Home Assn of Batavia, pres, William B Sanders; v-pres, Mrs Alice
Walker, sec-treas, Carrie Dewey; supt, Lydia B Cornwall, 311 E Main
Childs Hobart L (Violet E), raw furs, wool and hides 32 Center, h do
Chilson Charles, r 6 Linwood av
" Dorothy, r 6 Linwood av
" Harry Jr, r 54 Buell
" Harry P (May S), emp M-H Co, h 54 Buell
" Jeanette L, proof reader B T Pub Co, r 25 Clifton av
" Leon R, emp B & N Y W Co, r 25 Clifton av
" May S (Mrs Harry P), emp E N R Co, h 54 Buell
" Rollin P, h 25 Clifton av
" William, emp B & N Y W Co, r 6 Linwood av
Chimino Henry, r 24 Wiard
" Michael (Santa), emp P W M & Son, h 24 Wiard
Chitfenden Ellen L, r 315 E Main
Chmielowiec Anthony (Helen A), painter and paperhanger 5 Otis, h do
Choate Wilber C (Etta A), clk board of supervisors, h 4 Prospect av
Christie Anna D, hskpr 6 Central av, r do
Christopher Carl (Marjorie H), mgr 200 W Main, h do
Chudoba Michael (Josephine O), lab, h 451 Ellicott
**CHURCH OLIVER A (Olive G), dist mgr Niagara, Lockport & Ontario Power Co,
h 237 State**
Churches: Emmanuel Baptist Church, 112 W Main, Rev Charles P Collett
pastor. Sunday services, morning 10:30 a m, Bible school 12 m,
young People's service 6:15 p m, evening service 7:30 p m, prayer
meeting Wed 7:30 p m
" Evangelical The, Center c School, Rev Arthur E Martin pastor. Services
Sun 10:30 a m, Sunday school 11:30 a m, Wednesdays 7:30 p m
" First Baptist, 306 E Main, Rev George K Warren pastor. Services Sun
10:30 a m, Sunday school 12 m, Christian Endeavor 6:30 p m, prayer
meeting Wed evening 7:30 p m
" First Church of Christ Scientist, 217 E Main, Mrs Eda C Bird first reader.
Services Sun 10:45 a m, Sunday school 12 m, Testimonial and ex-
perience meetings Wednesdays 8 p m
" First Methodist Episcopal, 203 E Main, Rev T Garland Smith pastor.
Services Sun 10:30 a m, Sunday school 12 m, Epworth League 6:30
p m, Sun evening service 7:30 p m, Wed and Thurs week day religious
instructions 2:30 p m, mid-week service 7:30 p m Wed

OFFICE SUPPLIES | Carlton M. Sleight

67 MAIN STREET

66 1934—BATAVIA DIRECTORY—1934

- Churches: First Presbyterian, E Main and Liberty, Rev Charles C MacLean, D D pastor. Services Sun 10:30 a m, Sunday school 12 m, prayer meeting Wed evenings 7:30 p m
- " Free Methodist, Ellicott c Linwood av, Rev Joseph Skuce pastor. Services Sun 11 a m and 7:30 p m, Sunday school 12 m, prayer meeting Wed 7:30 p m
- " Gospel Mission of Batavia The, 17 State, Rev George W Clement pastor. Sunday school 10 a m, preaching service 11 a m, Young People's meeting 6:30 p m, prayer meeting Thurs 7:30 p m
- CHURCHES: SACRED HEART (Polish), Swan c Sumner, Rev Stanislaus M Cichowski pastor. Services Sun mass 8 a m, high mass with sermon 11 a m, vesper 7:30 p m, week day mass 8 a m, see p 18**
- " Salvation Army, Batavia Corps 30-32 Jackson, Ernest Baxendale ensign. Services Thurs, Sat and Sun at 8 p m, Sun 10:45 a m
- " Schumry Arnuce Synagogue, 232 S Liberty, Harry Jacobson rabbi. Services Sat 9 a m and 7 p m, Sunday school first five days of week at 4 p m
- " St Anthony's (Italian) S Liberty c Central av, Rev William C Kirby rector. Services Sun masses 6:10, 7:30, 9 and 11 a m, Sunday school 9:30 a m, week day masses 7:30 and 8, devotions to St Anthony Tues 7:45 p m
- CHURCHES: ST JAMES EPISCOPAL 405-409 E Main, Rev Alanson C Davis rector. Sun services 8 and 11 a m, Sunday school 11 a m, see p 19**
- CHURCHES: ST JOSEPH'S 301 E Main, Rev T Bernard Kelly, pastor; Rev Leo F Reddy, asst. Sunday masses 7, 9 and 11 a m, evening services 7:45 p m, Sunday school 9:45 a m, daily masses 7:15 and 8 a m, see p 17**
- " St Mary's, 20 Ellicott, Rev Henry A Dolan rector. Services Sun, masses 7, 8:30 and 11 a m, benediction 7:45 p m, Sunday school 9:30 a m, week day masses 7:15 a m, holidays 5:30, 7 and 8 a m
- CHURCHES: ST PAUL'S EVANGELICAL LUTHERAN 6 Liberty, Rev Paul H Nemes-cly pastor. Services Sun 10:45 a m, Sunday school 12 m, evening services Sun during Lent 7:30 p m, see p 20**
- " United Spiritual Church, 24 Center, Rev V M Hall reader. Services Thurs 7:45 p m and Fri 3:30 and 7:45 p m
- " Unity Spiritual Church of the Soul, 5 Ellicott av, Mary C Ward-Gifford pastor. Services Sun 7:30 p m, evening services Wed 8 p m
- " Wesleyan Methodist, 315 W Main, Rev O Glenn McKinley pastor. Sunday school 10 a m, morning worship 11 a m, W P S 6:30 p m, song service 7:30 p m, evening service 8 p m, prayer service 7:30 p m Wed Church Hill Arthur R (Bessie M), cashier M-H Co, h 321 Washington av
- " Charles L, bus Alexander, N Y, r 101 State
- " Clara G, wid George F, hskpr 2 N Spruce, r do
- " Earl P (Batavia Motor Coach Co), r 101 State
- " George B (Clara B), retired, h 101 State
- " Howard D Sr (Philoia A), farmer, h 609 E Main
- " John M, student, r 321 Washington av
- " Laura M, maid 63½ Vernon av, r do
- " Robert S (Carrie S), retired, h 108 Washington av
- Cicere—see Cecere
- Cicero Concetta M, wid Joseph, grocer 9 Hutchins, h do
- Cichochi Michael (Mary J), muck farmer, h 687 E Main
- Cichowski Edward J, student, r 101 Harvester av
- " Helen B, student, r 101 Harvester av
- " Ignacy (Tecla C), grocer 101 Harvester av, h do
- " J Sophia, clk, r 101 Harvester av
- " Matthew F, emp R L H & P Co, r 101 Harvester av
- CICHOWSKI STANISLAUS M REV rector Sacred Heart Church, h 18 Sumner**
- Cieri Julia A, teacher, r 201 Liberty
- Cifelli Nicola (Dionira G), grocer 201 Liberty, h do
- Cifelli Frank D, lab, r 414 Ellicott
- " James D, lab, r 414 Ellicott
- " Michael C, lab, r 414 Ellicott av
- " Nicholas (Antonia C), lab, h 414 Ellicott
- " Ralph C, lab, r 414 Ellicott av
- Ciliski Mary A, wid Joseph, r 215 Swan

Adam, Meldrum & Anderson Co.

Always Dependable Merchandise at Moderate Prices

1934—BATAVIA DIRECTORY—1934

67

- Ciliski Peter P (Viola R), emp B & N Y W W Co, h 215 Swan
- Cina Charles (Margaret G), lab, r 15 Central av
- " Joseph M (Mary R), emp D D C Co, h 113 Evans
- " Liboria B, wid Salvatore, h 36½ Maple
- " Mildred, r 36½ Maple
- " Rose, opr J H & Sons, r 36½ Maple
- " Samuel, clk D D C Co, r 36½ Maple
- Cino James (Josephine D), lab, h 12 Otis
- Cinquino A Maria, opr J H & Sons, r 240 Liberty
- " Anna J, r 240 Liberty
- " Elsie M (Mrs Michael), opr J H & Sons, h 5 Garfield av
- " Mary, opr J H & Sons, r 240 Liberty
- " Michael (Elsie M), lab, h 5 Garfield av
- " Pietro (Mary D), h 240 Liberty
- Cintorino Andrew, emp N Y C R R, r 113 Liberty
- " Antonio (Antoinette R), shoe repairing 113 Liberty, h do
- " Joseph, r 113 Liberty
- " Salvatore, student, r 113 Liberty
- Cionitti Albert, student, r 143 Jackson
- " Nicholas (Angeline C), lab, h 143 Jackson
- " Peter (Mary G), clk Wheelan Drug Co, h 507 Ellicott
- Cinillo Antoinette (Mrs Antonio), opr J H & Sons, h 23 Hutchins
- " Antonio (Antoinette), emp M H Co, h 23 Hutchins
- " Paschal, r 23 Hutchins
- Ciszewski Alfred, janitor, r 26 Cherry
- City Hall, W Main
- City of Batavia, see Batavia, city of
- Clafey Ellis J (Margaret M), plumber Goade & Flohr, h 45 Prospect av
- " Lucille, r 45 Prospect av
- " Margaret M (Mrs Ellis J), bkpr Goade & Flohr, h 45 Prospect av
- " Mary, wid Daniel, r 45 Prospect av
- Clafin Elmer E (Clara Belle), clk, h 33 Porter av
- " Harold L, emp A T & T Co, r 38 Columbia av
- Clapp Nina D, wid William R, r 38 Columbia av
- Clark Adelbert A (Ellen M), lab, h 41 Center
- " Agnes A, teacher, r 563 E Main
- " Annette, wid Frank, r 21 Trumbull pkwy
- " Bertha M, r 1 Cone
- " Carl M, emp W P Co, r 4 Miller av
- " Catherine C, r 563 E Main
- " Charles F (Gertrude E), lab, h 18 Hutchins pl
- " Charles F (Iva B), office wkr, r 21 Trumbull pkwy
- " Elizabeth L, nurse 61 Walnut, h do
- " Gertrude E (Mrs Charles F), opr P W M & Son, h 18 Hutchins pl
- " Hanna A (Mrs Raymond O), opr N Y Tel Co, h Dawson pl
- " Helen F, sten Genesee County Automobile Bureau, r 134 W Main
- " Henry A (Frances G), foreman Daily News, h 134 W Main
- " Henry A Jr, salesman Buffalo, r 184 W Main
- " Ida E, wid Willie, h 3 McKinley av
- " John W (Barbara A), h 24 Manhattan av
- " Julia, r 563 E Main
- " Leroy F (Adda), civil eng, h 113 Tracy av
- " Mae E, wid Clarence C, dom, h 1 Cone
- " Mary E, wid George E, h 56 Buell
- " Orlo H, student, r 113 Tracy av
- " Raymond E, r 1 Cone
- " Raymond O (Hanna A), steel wkr, h 1 Dawson pl
- " Russell H (Dorothy A), adding mach insp, h 126 Trumbull pkwy
- " Stephen H, riding school 563 E Main, h do
- " William E, emp P W M & Son, r 56 Buell
- " William F, student, r 113 Tracy av
- " William H, spec delivery messenger clk, r 134 W Main
- Clarke Agnes E Mrs, emp P W M & Son, r 337 W Main
- Clarkson Marian C, r 65 Oak
- Class Anna M, wid Michael, h 42 Porter av

68 1934—BATAVIA DIRECTORY—1934

- Clase John (Mary A), painter, h 3 Highland pk
CLASE JOHN W E (Josephine C), (Simon Clase & Son), h 164 Jackson
 " Mildred I, sten P W M & Son, r 42 Porter av
CLASE SIMON (Ida M), (Simon Clase & Son), h 41 Maple
CLASE SIMON & SON (Simon and John W E Clase), vulcanizing, auto tires and batteries 15 Center, see p 14
 " William F (Esther L), emp Simon Clase & Son, h R D 2
 Clattenburg Edson (Mona E), emp D D C Co, r 8 Masse pl
 Cleaneteria, Anthony Colledo prop, 44 Main
 Cleghorn Amanda L, wid James, h 167 Summit
 Clement George W Rev (Lillian M), supt Gospel Mission of Batavia, h 30 Franklin
 " Milton O (Charlotte M), mgr safety and compensation dept M-H Co, h 202 East av
 " Robert M, gas sta attd S O Co, r 202 East av
 Clements Charlotte, wid James, r Blue Bird Inn
 Clendenon Dwight L (Nellie A), salesman Crickler & Houseknecht, h 63 Redfield pkwy
CLENDENON IRELL D (Vera C), agt Metropolitan Life Insurance Co, h 59 Redfield pkwy
 Cleveland Gladys W, wid Arthur W, emp 116 Main, h 24 Chestnut
 " Raymond N (Hazel E), plant eng Gen Ice Cream Corp, h 29 Chestnut
 Climax Corp, enlage cutters and thrashing machines 40-44 Swan, pres, William S Gounlock; v-pres, Edward V Gounlock; treas, Harold Gounlock; sec, Mrs Margaret M Smallwood
 Cline Anna G, wid James, h 117 Swan
 " Eva K, wid Joseph, h 3 Walnut
 " Francis J, emp B T Pub Co, r 3 Walnut
 Clor Arthur F (Winifred E), salesman, h 512 E Main
 " Willard E (Sylvia M), painter Burt W Welch, h 18 Madison av
 Clough Andrew M (Elizabeth J), h 136 Jackson
 Clune Anna, r 107 Union
 " John P, painter and paperhanger 107 Union, h do
 Cobb Charles E, priv state police, r 669 E Main
 Cocco Helen A, clk J J Newberry Co, r 405 Ellicott
 " Peter M T, r 405 Ellicott
 " Regina C, wid John, h 405 Ellicott
 Cochran Clara, wid Floyd, clk A G Henning, h 108 State
 " Elliott P (Anna A), attendance officer pub schools, h 207 Washington av
 Cochrane Lyda S, prin Brooklyn School, r 13 S Main
 " Samuel R, crossing watchman N Y C R R, h 16 Clinton av
 Cocuzza Esther R, opr J H & Sons, r 111 Evans
 " Frank C, lab, r 111 Evans
 " Joseph (Angeline C), retired, h 111 Evans
 Coe Roy M (Bessie L), retired, h 1 Porter av
 Cofran Evert G (Clara M), emp Miner Battery Co, h 17 Ellsworth av
 " Mary (Mrs Walden), teacher, h 7 Elm
 " Walden S (Mary), teacher, h 7 Elm
 Cohocton Apiaries, Edwin W Frisby prop, 74 Franklin
 Colangelo Alexander (Fannie O), grocer 325 Ellicott, h 323 do
 " Anita, nurse 323 Ellicott, r do
 " Anthony (Martha), elec, h 205 Liberty
 " Joseph (Jennie G), h 205 Liberty
 " Louis G, r 323 Ellicott
 " Maria, wid Charles, r 205 Liberty
 " Martha (Mrs Anthony), opr H & Sons, h 205 Liberty
 " Mary, r 323 Ellicott
 " Nicholas, dentist Flint, Mich, r 205 Liberty
 Colantonio Frances C, wid Michael, r 207 Liberty
 " Joseph (Antoinette A), emp M H Co, h 9 Otis
 " Louis (Mary M), trucking 73 Clifton av, h do
 " Mary, r 9 Otis
 " Michael, student, r 9 Otis
 " Nicholas, r 9 Otis

1934—BATAVIA DIRECTORY—1934

69

- Colantonio Nicholas (Mary T), mason, h 207 Liberty
 " Peter, r 207 Liberty
 Colarco Carmen, lab, h 60 Swan
 Colburn George L (Irene W), com trav, h 205 Ross
 Colby Alexander, retired, r 11 Raymond av
 " Ella L, wid Fred, dressmkr 15 Morton av, h do
 Cole Edward J (Ethel M), shoe wkr, h 3 Walnut pl
 " Eloise R (Mrs Jay L), teacher B H S, h 111 Tracy av
 " Grove W (Laura G), fireman P W M & Son, h 309 Bank
 " Irwin A (Ethel S), physician and surgeon 206 E Main (3-4), h 230 State
 " Jay L (Eloise R), custodian of school bldgs, h 111 Tracy av
 " John S, private state police, r 669 E Main
 " Lorna A, student, r 309 Bank
 " Merle D (Dorothy I), pur agt P W M & Son, h 141 Ross
 " Ruth M (Mrs Walter G), clk Flatiron Grocery, h 52 S Main
 " Waiter G (Ruth M), prop Flatiron Grocery, h 52 S Main
 " William J (Effie L), carp, h 22 Cedar
 Coleman Helen M, teacher, h 145 S Main
 Coles Arthur E E (Memphis M), chauffeur, h 14 Columbia av
 " T George, fgt foreman E R R, r 7 McKinley av
 Colgrove Arnold W, student, r 19 Lewis av
 " Myron E (Mildred C), (Colgrove & Ryan), h 19 Lewis av
 " & Ryan (Myron E Colgrove and Joseph M Ryan), meats and provisions 54 Main and prop Genesee Market
 Collard John V, student, r 41 Walnut
 " Mabel S, wid John J, dressmkr A G Henning, h 41 Walnut
 Colledo Anthony, prop Cleaneteria, r 322 S Jackson
 " James F, r 322 S Jackson
 Collegian Tailors, K Robert Grahame mgr, 94 Main
 Collett Charles P Rev (Amy F), pastor Emmanuel Baptist Church, h 3 Thomas av
 Collins Clair D (Jessie), mech W N Y Motor Lines, h 33 Manhattan av
 " Clara S, wid Lewis D, house sec Y W C A, h 109 Ross
 " Elizabeth T, student, r 28 Wiard
 " Francis J, emp P W M & Son, r 28 Wiard
 " James J Jr, clk Redmond Bros, r 28 Wiard
 " James J (Mary), lab, h 28 Wiard
 " John J, chauffeur, r 28 Wiard
 " Lewis S (Helen I), sec-treas Charles F Miller Printing Co, h 109 Ross
 Collister Howard R (Lillian L), mech Charles Mancuso & Son, h 8 West av
 " Mary L, wid Royce R, h 21 Lewis av
 " R Bailey, student, r 21 Lewis av
 Colombo Ella, dom 46 Ellicott av, r do
 " John, emp DeLuxe Restaurant, r 7 Pringle av
 " Joseph, lab, r 7 Pringle av
 " Manuel (Rose C), emp Oakfield, h 16 Wood
 " Nofre, r 7 Pringle av
 " Rose C, wid Luigi, h 7 Pringle av
 " Samuel J, lab, r 7 Pringle av
 Colonial Beacon Oil Co Inc, William Morrison res mgr, office and service station Pearl c River
 " Esso Station, A Edwin Kogie prop, 313 W Main
 Colotto Gaetano (Maria G), emp N Y C R R, h 7 Hutchins
 Colton Martha, nurse 24 Porter av, r do
COLUMBIA GRAFONOLAS Schater's Music House, 52 Main
 Combs Jennie E, sten, r 120 Washington av
 " John B (Lydia F), live stock dealer 556 E Main, h do
 " Margaret A, wid Thomas, h 120 Washington av
 " Perry T, veterinarian 556 E Main, r do
 Comstock Emma L, prin Pringle School, h 26 Bank
 Cone Newell K (Belle J), county judge, surrogate and attorney 98 Main, h 20 Summit
 " Oliver L (Martha H), salesman, h 16 Edward
 Conforto Laura, r 69½ Swan
 " Michele (Frances C), h 69½ Swan

- Congdon Michael J, painter, h 18 Elm
 " Walter (Deja) farm hand, h Batavia-Stafford town line rd
 Coniber Elroy E (Bsteila M), agt Fruid Ins Co, h 20 Richmond av
 " Sarah, wid George, h 4 Norris av
 Conklin Edmund E (Violet A), prop S Jackson St Garage, h 3 Lewis pl
 Conley William H (Maude B), millwright D D C Co, h 66 S Main
 Connelly Anna G, teacher Lincoln School, h 22 Bank
 Connor John H, student, r 9 Dellinger av
 " Mary A, wid James A, h 207 W Main
 " Nellie C Mrs, r 9 Dellinger av
 " Paulina Mrs, dom 312 E Main, r do
 Conrad Frank N (Bernice), cont and builder 72 Oak, h do
 " Mary F, wid Peter, r 218 Bank
 " Robert J (Marjorie B), carp, h 3 Law n Walnut
 " William F (Beulah L), cont and builder 40 Redfield pkwy, h do
 Conrad Mary Louise, hskpr N Y S S B, r do
 Conradi George A, emp M-H Co, h 250 Liberty
 Consaul George A, emp M-H Co, h 114 Vine
 Considine Lawrence L, gate tender N Y C R R, r 117 Swan
 Constable Julia E (Mrs Ervin), clk Carlton M Slight, h Byron rd, R D 2
 Constantino Anthony, barber, r 250 Liberty
 " Anthony, retired, h 10 Central av
 " Samuel (Carrie F), emp M-H Co, h 250 Liberty
 " Vincent, student, r 250 Liberty
 Conti Antonio (Lena L), lab, h 125 Swan
 Contractors Machinery Corp, mfrs contractors tools Clinton, pres, Frederick W Allan; sec-treas, Walter W Stroh; gen mgr, Robert G Allan
 Conway Eleanor I, student, r 12 Central av
 " George M (Alice M), cabinet mkr B & N Y W Co, h 1 Charles
 " John V (Olah B), iceman B P I & S Co, h 12 Central av
 " Julia S, wid Thomas F, dom 45 Washington av, r 232 W Main
 " Vincent J, clk Richmond Bros, r 12 Central av
 Cook A DeForest (Hortense C), brakeman N Y C R R, h 21 Summit
 " Edith M, r 173 Summit
 " Eileen T, chiropodist 173 Summit, h do
 " Herbert M (May K), supt filtration plant, h 16 Kibbe av
 " Hortense C (Mrs A DeForest), prop Ka-Lo Beauty Shoppe, h 21 Summit
 " Lewis I (Florence M), chauffeur, h 301 Bank
 " Mary E, wid Elmer J, r 512 E Main
 " Walter, printer, r 8 Colorado av
 " William L (Dorothy A), emp Oakfield, h 19 Brooklyn av
 " William V (Myrta K), office 74 Main, h 159 Bank
 Cooley Alma M Mrs, emp P W M & Son, h 39 State
 " George (Nellie J), retired, h 7 Chestnut
 " LaVerne C (Mayme R), printer Charles F Miller Printing Co, h 8 Chestnut
 " Robert E (Susan M), linotype opr Daily News, h 152 State
 " Robert E Jr, student, r 152 State
 " Sadie, r 125 Bank
 Coolidge George, emp McAlpine Brumsted & Co, h 22 Chestnut
 " Nellie H Mrs, teacher Jackson School, r 17 Ross
 Coon Helen T, nurse, r 51 Vernon av
 " John A (Elizabeth M), retired, h 144 Bank
 " William A (Josephine L), salesman, h 51 Vernon av
COON WILLIAM H (E Julia), lawyer and city attorney 51 Main, h 2 North, see p 31
 Cooney Anna N, wid Peter T, h 29 Buell
 " Cecelia G, r 29 Buell
 " Isabel F, nurse 29 Buell, r do
 " Mary A, emp Buffalo, r 29 Buell
 Coons Edna W (Mrs Arthur G), sec E A Washburn, res Bank st rd
 " James G (Luella L), acct Genesee Stone Prod Co, h 50 Clinton
 " James S, artist Jamestown, r 44 Tracy av
 " Jane M, clk J C Penney Co, r 44 Tracy av
 " Lucille O, student, r 44 Tracy av
 " Mary L, wid Frank, r 161 Bank
 " Saxon A (Claribel S), timekpr Attica, h 44 Tracy av
 Cooper Bertha G, phone opr N Y Tel Co, r 3 Morse pl

- Cooper Grace N, dressmkr 57 Main (7), h do
 " Jesse F (Daisy E), carp, h 3 Morse pl
 " Mabel E, nurse 24 Porter av, r do
 " Myron J (Mary E), salesman, h 5 N Park
 " Paul K (Dolores E), meat cutter 1 State, h 207 Washington av
 " R Glenn (Mary L), mach, h 530 E Main
 Co-operative Fire Insurance Co The, pres, Leander Gay; sec, W Peregrine K White, home office 2 Main (2)
 " Fire Insurance Co The of Wyoming and Genesee (Erie, Niagara and Orleans), W P K White sec, 2 Main (2)
 " G L F Marketing Corp, Robert Smith mgr, produce (wholesale) 37 Ellcott
 " G L F Mills (Inc), Leroy H Facer mgr, fertilizer mixing Howard
 Copani Salvatore A (Mary A), emp M-H Co, h 62 Swan
 Cope Isabelle A, teacher, r 153 Summit
 " Jay I, baker N Y S S B, r do
 Copeland Emma Mrs, r 107 State
 Copoulos Beatrice M, sten Lawrence T Casey, r 38 Jefferson av
 " Charles, student, r 38 Jefferson av
 " J George (Stavroula D), prop Am Candy Kitchen, h 38 Jefferson av
 Coral Helen, wid William, r 38 Roosevelt av
 " Sylvester B (Florence A), emp N Y C R R, h 5 Walnut pl
 Corbett Alice D, r 60 Walnut
 " George F, student, r 28 Thomas av
 " James F (Bessie A), prop The Union Clothing Store, h 28 Thomas av
 " James J (Anna T), sta fireman G Noack, h 245 Ross
 " John J (Catherine), fireman N Y C R R, h 17 North
 " Mary A, wid Thomas J, h 60 Walnut
 Corbin Florence, hairdresser, r 4 Cedar
 Corcoran Beatrice H, teacher, r 120 Bank
 " Mark H (Anna F), coal dealer 43 Center, h 9 Lewis av
 " P Burton, chauffeur B P I & S Co, r 120 Bank
 " Patrick H, hoisting eng, r 227 Jackson
 Corey Jack C, gas sta attd West Main Service Station, r 436 E Main
 " Lillie C, wid Robert K, h 436 E Main
 " Lorraine N, clk F E M & Sons, r 436 E Main
 " Roy M, prop West Main Service Station, r 436 E Main
 " Thomas J (Nora), barber 115 W Main, h 15 Holland av
 " Virginia M, sten D D C Co, r 436 E Main
 " William E, printer Fix Printing Co, r 15 Holland av
 Cornell Charles B (Mate), retired, h 11 Ward
 Cornwall Lydia B Mrs, supt Children's Home, h 311 E Main
 Corona Joseph (Lucy M), lab, h 35 Osthout av
CORP CYHUS E (Frances S), prop F J Corp & Son, h 13 Montclair av
CORP F J & SON Cyrus E Corp prop, real estate, insurance and loans 62 Main (4), see front cover
 " Mary P, wid Frank J, r 158 Bank
 Corrado Anthony B (Amelia R), fireman B F D, h 143 State
 Corrigan Iva J (Mrs James A), clk 116 Main, r 24 Franklin
 " James A (Iva J), meat cutter Colgrove & Ryan, h 24 Franklin
 Corsette Marguerite A, phone opr N Y Tel Co, h 518 E Main
 Corti Dante H (Edna L), wholesale monument dealer 26 State, h do
 " Frank A (Estelle W), lawyer 14 Jackson, h 16 Woodrow rd
 " Leon L (Ruth C), monumental dealer 109 Harvester av, h do
 " Rachel A, wid Peter, prop Corti's Monument Works, h 26 Lincoln av
 Corti's Monument Works, Mrs Rachel A Corti prop, granite and marble 28 State
 Coryell Anna M, h 215 Washington av
 Cosmillo Edward, lab, r 305 Ellcott
 Costantino Anthony G, prop Tony's Barber Shop, r 250 Liberty
 " Samuel (Clara), emp M-H Co, h 150 Liberty
 " Vincent, student, r 250 Liberty
 Costanzo Joseph, student, r 5 Highland pk
 " Salvatore (Marietta G), emp B Dry Cleaning & Pressing Co, h 5 High-land pk
 Costello Grace L, bkpr William B Maney, r 43 Prospect av

72 1934—BATAVIA DIRECTORY—1934

- Costello John L, private state police, r 669 E Main
COSTELLO JOHN M (Marcelle E), exec mgr Niagara, Lockport & Ontario Power Co, h 19 Redfield pkwy
 " M Annette, h 43 Prospect av
 Costianes Aphrodite, hairdresser, r 130 S Main
 " Florence (Mrs John D), emp Texas Hot Weiners, h 38 Jefferson av
 " John D (Florence), prop Texas Hot Weiners, h 38 Jefferson av
 " John P, r 130 S Main
 " Michael, student, r 180 S Main
 " Pauline, r 130 S Main
 " Peter J (Catherine), prop Tip Top Lunch, h 130 S Main
 " William P (Clara S), emp Sunshine Cleaners & Laundry, r 19 Bank
 Cosway Myrtle V, wid Sylvester, bkpr F A Lewis, h 2 Hull pk
 " Sarah J, wid Fred D, h 214 State
 Cotes Richard L, bkpr First Nat Bank, r 23 Tracy av
 Cotichio Laura, opr J H & Sons, r 11 Taggart
 " Loreto (Laura R), h 11 Taggart
 " Louis F, emp Silver Slipper, r 11 Taggart
 " Lucy R, student, r 11 Taggart
 " Mary, opr J H & Sons, r 11 Taggart
 " Rose, emp J H & Sons, r 11 Taggart
 " Thomas R, emp Plaza Restaurant, r 11 Taggart
 Cottage Restaurant, Frank J Callan prop, 4 State
 Cotton Andrew L (Dorothy M), salesman E A Will, r 31 Bank
 " Andrew St, mgr E A Will, r Y M C A
 " Ralph K, student, r 29 Bank
 " Roy E (H Esther), emp D D C Co, h 1 N Park
 Coupland Albert A, bus Cannonsburg, Penn, r 56 Pearl
 " Anna, nurse 10 Prospect av, h do
 " John W (Syvia J), chiropractic specialist 56 Pearl, h do
 " Kate S, infants boarding 10 Prospect av, r do
 " Rose E, teacher, r 10 Prospect av
 Court House, see Genesee County Court House
 Courtney Harriet M, wid H Harry, hskpr 318 Washington av, h 197 Oak
 Courts—see p 30
 Coutant Leslie S (Mary R), emp Red Seal Service Sta, h 26 Summit
 Covell Avery E (Elizabeth O), cont and builder 112 Union, h do
 " David S, clk, r 112 Union
 Covert Rose G, teacher Robert Morris School, r R D
COWARD TODD W (Dorothy L), prop Todd W Coward, h 28 Redfield pkwy
COWARD TODD W Todd W Coward prop, general insurance and surety bonds
 46 Main, see back cover
 Coxon George (Anna), fireman B F D No 1, h 30 Seneca av
 " George Jr, r 30 Seneca av
 Coy Charles L, mech Blue Bus Lines, h 9 Pearl
 " Kathleen S, wid Burdell, r 9 Pearl
 Coykendall Bernice, nurse St Jerome Hosp, r do
 Craft George H, county comm public welfare, res Oakfield
 Craig Gertrude, nurse St Jerome Hosp, r do
 " John, cement finisher, r 5 McKinley av
 Cramer Elizabeth S, teacher B H S, h 26 Bank (1)
 Cramm DeWitt T (Ora L), emp N Y C R R, h 1 Thomas av
 Crane Florence Mrs, h 61 Oak
 " Irving, billiards 52 Main, r 11 Holland av
 " Lozette D, wid Frank L, h 10 Hull pk
 " Nora H Mrs, h 20 Central av
 " W Kenneth, clk Colgrove & Ryan, res Elba
 Crangle Mary J, wid James, h 39 Union
 " Mary M, phone opr N L & O P Co, r 39 Union
 " Roland T, elec eng, r 39 Union
CRAVEN NELSON B florist 19 Linwood av, h do, phone 1153-R, see back cover
 Crawford A Ray (Emma C), mech Siebert's Garage, h 12 State
 " Beulah L, asst L Lee Mulcahy, r 5 Vernon av
 " Ella J, emp P W M & Son, h 69 Swan

1934—BATAVIA DIRECTORY—1934

- Crawford Inez I, emp P W M & Son, r 69 Swan
 " Lila, emp P W M & Son, r 69 Swan
 Crazy Water Crystal Store, John Burkell mgr, mineral water 22 Jackson
 Crego Catherine R, student, r 26 W Main
 " Cornelia, r 102 Ross
 " Henry C (M Louise), trav salesman, r 26 W Main
 Crehan Frank S, emp New York, r 122 Summit
 " Frank A (Loretta), letter carrier P O, h 122 Summit
 " John A (Anna R), teamster, h 121 Summit
 " Lewis S, student, r 122 Summit
 " Mary, bkpr Batavia-Elmira Express Lines, r 121 Summit
 " Paul J, student, r 122 Summit
 Creley James A (Margaret C), mason cont 156 Summit, h do
 " William D, emp Buffalo, r 156 Summit
 Crickler Daisy H (Mrs Ralph W), (Crickler & Houseknecht), h 42 Vernon av
 " Mildred G, h 4 Thomas av
 " Ralph W (Daisy H), bottler rear 245 W Main, h 42 Vernon av
 " & Houseknecht (Mrs Daisy H Crickler and Samuel L Houseknecht),
 wholesale conf 245 W Main
 Crimanto Charles (Sarah D), lab, h 7 Maple
 Cristofaro Joseph (Fannie L), emp M-H Co, h 114 Swan
 Crocker Adah H, wid Alexander, milliner, h 124 Main
 " Edith Mrs, emp B Hosp, h 14 East av
 " Frances M (Mrs Ward B), teacher Darien, h 134 S Main
 " Walter M, retired, r 134 S Main
 " Ward B (Frances), commercial artist, h 134 S Main
 Croff D Olivé, junior asst lib Richmond Mem Library, r 26 Ross
 Croft Elнора R, clk 42 Washington av, r 130 State
 " John S (Ethel M), mason, h 130 State
 " Kenneth J (Dorothy), emp P W M & Son, r 130 State
 Cromme Henry L (Margaret M), signal maintainer N Y C R R, h 16 Buell
 Crompton Arthur, emp P W M & Son, r 18 S Main
 " E Mae, emp P W M & Son, r 18 S Main
 Crosby Agnes M, wid Harry D, h 8 Vine
 " Kaye C, private state police, r 669 E Main
 " Thomas S (Dorothy A), mgr W T Grant Co, h 25 Lyon
 Cross Donald E, student, r 657 E Main
 " E John (Fredereka), painter 657 E Main, h do
 " Frank S (Belle M), prop The Rock Garden Glen and painter and paper-
 hanger 5 Morton av, h do
 " Julia Mrs, dom 33 Ross, r do
 Crotty Delia, hskpr St Joseph's Rectory, r 303 E Main
 Crouse Isabelle T, wid Frederick E, h 13 Cedar
 Crowley Frank (Frances), lab, h 18 Oak
 " James F (Harriet B), lawyer 35 Walnut, h do
 Croxton Carl D, clk P M Davis, r 122 Bank
 " Dana E (Lulu E), salesman, h 122 Bank
 " Doris E, emp F E M & Sons, r 122 Bank
 Cullings Noble L (Elva H), foreman E N R Co, h 50 Lyon
 Cullings Mildred H Mrs, teacher, res LeRoy
 Cuttrara Charles J, clk 106 W Main, r 19 Hutchins
 " Santo (Mary L), flagman N Y C R R, h 19 Hutchins
 " Virginia F, bkpr Max Pies, r 19 Hutchins
 Cummerton John J (Loretta E), plumber 130 Union, h do
 " Kathryn M, emp E N R Co, h 4 Court
 " Thomas F, patrolman, r 46 Lyon
 " William L (Ruth), clk P O, h 8 Redfield pkwy
 Cummings Blanche M, dental hygienist 124 Main, h 30 Tracy av
 " Donald H, emp Duddy's Grill, r 120 Summit
 " Dorothy A, student, r 35 Maple
 " Harry J (Lina C), prop Duddy's Grill, h 120 Summit
 " Howard C, mech Park Place Garage, r 35 Maple
 " J Harold (Margaret M), lab, h 11 S Lyon
 " James (Ellen), emp M-H Co, h 18 Morton av