

## MERCED COUNTY GENEALOGICAL SOCIETY

MAY 2016

# Ancestral Chart

No. 1 on this chart is  
the same person as No. \_\_\_\_\_  
On Chart No. \_\_\_\_\_

BORN  
PLACE  
MARRIED  
PLACE  
DIED  
PLACE

NAME OF SPOUSE

BORN  
PLACE  
MARRIED  
PLACE  
DIED  
PLACE

BORN  
PLACE  
MARRIED  
PLACE  
DIED  
PLACE

BORN  
PLACE  
MARRIED  
PLACE  
DIED  
PLACE

BORN  
PLACE  
MARRIED  
PLACE  
DIED  
PLACE

BORN  
PLACE  
MARRIED  
PLACE  
DIED  
PLACE

BORN  
PLACE  
MARRIED  
PLACE  
DIED  
PLACE

Chart No. \_\_\_\_\_

CONT. ON CHART \_\_\_\_\_

CONT. ON CHART \_\_\_\_\_

CONT. ON CHART \_\_\_\_\_

CONT. ON CHART \_\_\_\_\_

CONT. ON CHART \_\_\_\_\_

CONT. ON CHART \_\_\_\_\_

CONT. ON CHART \_\_\_\_\_

Form # F120

<http://www.ancestry.com/save/charts/anochart.htm>

© 2007 The Generations Network, Inc.

**1:00 p.m. Saturday**

**May 21, 2016**

## Gracey Room, Merced County Library

## April Speaker: Sharon Hawley-Crum, Ph.D.

### **"21 Century Digital Estate Planning: Are you prepared to pass on the keys to your digital kingdom?"**



*Sharon Hawley-Crum*

We had a wonderful presentation by Sharon Hawley-Crum regarding preserving and passing forward our family history records we keep in digital form. The following are some of the notes from her talk. Many of

us have accounts with several online companies and organizations on which we digitally store our genealogical information. At this point in time, state and federal laws

*Sharon Hawley-Crum*

regarding digital succession are in their infancy. It is important to stay on top of changes. Plan ahead.

- Choose a digital successor. Unlike choosing an heir to inherit money and property, you may not want a spouse or an older person to be your digital successor. A better choice might be a younger person with good computer skills who has an interest in family history. I niece, nephew or grandchild might be a better choice. It needs to be someone who can keep up on emerging digital storage technology so older digital files and images are not lost.
- Set up a power of attorney for your digital successor. Do not put it in with your will. Anything that is part of your will must be probated.
- Leave clear written directions in a file folder or safe about where your files are stored. They will not know where to begin unless you leave a

record of where to find it. Without that direction, many valuable pieces of information may be lost.

- Don't put everything on the cloud, and don't put everything in an online account your successor may not be able to access after you are gone.
- Consider using a Gmail to send your information and keep track of your information. Use Google's Inactive Account Manager feature to notify a trusted party that your account has become inactive. That way, your successor can access your Google account and retrieve your emails. Find out more by performing a Google search for "Inactive Account Manager."
- Leave clear instructions regarding current account types, usernames and passwords for all your accounts. Keep a copy in a safe place such as a safe deposit box or a sturdy floor safe that cannot easily be picked up and carried off. Review this list at least once a year.
- READ all the terms of the online services you use to determine if there are legal consequences for someone other than you access your account using your username and password—with or without your permission.
- Find out what happens to your information and images you submit to various online sites. On some sites, they take ownership of what you upload.
- Put all digital family history images in a file folder labeled "DO NOT DELETE." In addition, back up all our family history files and images in two or three places. You may want to send a copy of a family member that does not live with you so that if your house with your computer and back-up media is destroyed, someone else will have a copy of all family records.
- Do not delay. The more you do now, the easier it will be for those who follow you to find and keep track of the family's history and photos.

Sharon also gave us an example of a digital power of attorney that can be used. She advises we all contact our C.P.A. and attorney regarding digital succession laws in our state.



## April Meeting Attendance

There were 28 members and 6 for a total attendance of 34. We had two renewals and two new members for a total membership of 80. Welcome to our newest member Steve Moon who is researching in Kentucky.

---

### Fitting Puzzle Pieces Together: Prussians in Kansas - Part 3

By Michele Moore

Fitting puzzle pieces together, and learning that a good part of Prussia wound up in Kansas. (For part 1, See the February 2016 issue of The Family Snoop. For part 2 see the April 2016 issue.)

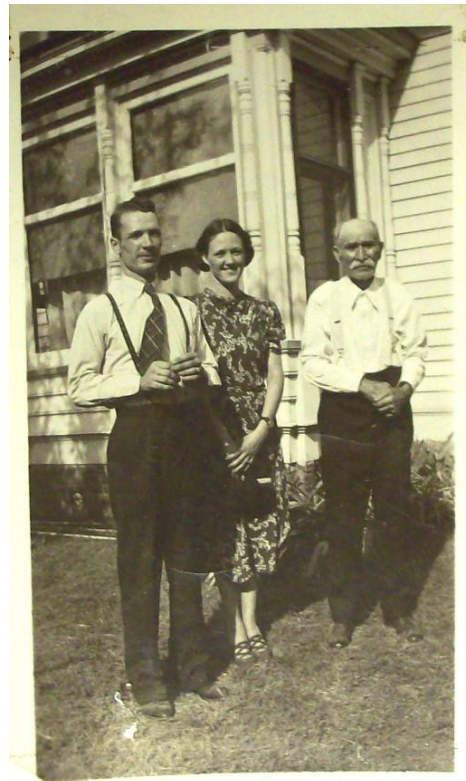


*Home of Albert & Hanna Schmanke on 4<sup>th</sup> Street in Alma, KS.*

Albert and Hanna moved to town later in life to a home on 4<sup>th</sup> street. Hanna died 4 Sep 1938 and is buried in Saint John Lutheran Cemetery in Alma, KS.

Albert lived until 1943. He became forgetful, so he lived with his daughter Bertha the last year or two of his life. He died on 26 Aug 1943 and is buried with his first wife, Johanna, in the Saint John Lutheran Cemetery.

Bertha became Mrs. Falk and remained in Alma, Kansas throughout her life.



*Edward and Laura Schmanke with Albert Schmanke.*

Albert Schmanke's only son, Edward, married the girl next door, Laura Campbell. He died at a young age in 1922. The couple farmed in McFarland.



*Martha Schanke and Bill Schroeder on their wedding day. Maid of honor was Wilhelmina Schroeder and the best man was Curtis Stephan, who is an in-law of Tillie, brother of Fred, who ran a fire store in Ellinwood.*

Martha married in 30 Jun 1912 in Alma to Bill Schroeder.



*This 1894 family portrait shows 8 year old Bill Schroeder in the center. Others in the photo are front: father, Carl Gustav (1839-1900), Bill, mother Johanna Beatte (Gruttner) (1840-1907; middle: Emilie, Alvina, Tillie and Pauline; back: twins Ernst and Adolph, and Oscar.*



*Martha's four daughters, Lois, Ada, Lauren and Edna, in Summer of 1942. Sons Carl and Ralph were away at war.*

Martha and Bill Schroeder had six children, Lois, Ada, Lauren, Edna, Carl and Ralph. Both sons served in World War II in the Pacific. Carl returned home uninjured after five years in the Pacific. Ralph was killed on the first day of battle to take Iwo Jima.

Martha was widowed in 1956 while she was living in Ellinwood, KS. Bill Schroeder was buried in She was a quiet type who let others do most of the talking. Still, she knew just about everyone in her community and people liked her.



*Martha with her daughter, Lauren, the author's mother, and the author's sister.*

The author's mother inherited the sewing gene from her grandmother, Hanna. She studied fashion design at Kansas City Art Institute. She made quilts and wood sculptures as well as clothing.



*Summer of 1942: Lauren (Schroeder) at her mother Martha's house in Ellinwood, Kansas.*

## What the Census Can Tell Nations

On April 1, 1861 the *New York Times* reprinted a story from the March 15, 1861 edition of the *London News*. The story--entitled "Revelations of the Census"--by examining the recently completed U.S. Federal Census of 1860, they were able to apply that data to the probable outcome of the to the growing conflict in the United States that became the Civil War.

Some Examples included a total population of 31,648,496, of which 3,999,853 was the slave population. Of the free population of 27,000,000 of all complexions nearly all white, 19,046,173 lived in the Free States, and 8,602,470 in the Slave States. The slave element of 4,000,000 does not add to the strength of the South, but the contrary, they are much more of an incumbrance than the same number of women and children. They have not only to be fed and guarded, but to be guarded against.

The article went on to break the situation down state by state, and predicting the probable outcome if the outcome of war based on the distribution of population among the states, as well as the distribution of industry versus agriculture.

To read the full article, go to <http://www.civilwar-online.com/2016/04/april-1-1861-revelations-of-census.html?ref=digest>

### May Meeting: Four Generation Chart Project

The genealogical society is focusing this year on strengthening the four generation chart program for its members. We ask all members to print off as many four generations charts as you need, fill them out and bring them to the next meeting. The officers will continue to accept four generation charts.

Here is how the program works. Complete the chart with the surnames, date ranges and localities of your ancestors. Circle the number(s) of the ancestors you are researching right now. As these

charts are turned in, a record will be made of where you are searching so if you wish you may contact and share locality research information with others. Also, as the book committee makes decisions on which books to buy for our collection in the Doris Cochran Research room, it will be helpful to know where our members are focusing their research.

If you are searching beyond your great-grandparents, you may wish to use the name of a parent or grandparent in the number one position on the chart. Make as many copies of the chart as you need to get your family information back to your years of research. (Example: If you are researching your 3<sup>rd</sup> great-grandparents in Virginia, start your chart with your grandparent who is their descendent in the number one position.)

A four generation chart is included on the next page.

### Obits Project

MCGS is looking for volunteers to work on an obituary project. We have been given about twenty years worth of clipped obituaries and an index database to go with them. There are several steps to getting these ready so that they can be useful to others. One step needs members who can go online and copy some names and dates using either Word or Wordpad. If you feel comfortable going online and using either of these program, please let me know. This can be done whenever you have time at home, at any hour and can be done at your convenience. If you feel more comfortable working with pen and paper, sorting, organizing, then there is other work that needs to be done. If you can work an hour a week, that would be great. Two hours, even better. Whatever works out for you. This is a big project and many hands make light work. For more information, please contact Anne Field, [mcgsmail@annefield.net](mailto:mcgsmail@annefield.net)

Upcoming Programs for 2015	
June 18	Kathy Burrows will speak on the topic of adoptions
July 16	Birthday month – member Show and Tell
	Join us and invite others to join with us!

# Ancestral Chart



Chart No. \_\_\_\_\_

No. 1 on this chart is  
the same person as No. \_\_\_\_\_

On Chart No. \_\_\_\_\_

BORN  
PLACE  
MARRIED  
PLACE  
DIED  
PLACE  
NAME OF SPOUSE \_\_\_\_\_

BORN  
PLACE  
MARRIED  
PLACE  
DIED  
PLACE  
BORN  
PLACE  
MARRIED  
PLACE  
DIED  
PLACE

BORN  
PLACE  
MARRIED  
PLACE  
DIED  
PLACE  
BORN  
PLACE  
MARRIED  
PLACE  
DIED  
PLACE  
BORN  
PLACE  
MARRIED  
PLACE  
DIED  
PLACE

CONT. ON CHART \_\_\_\_\_  
CONT. ON CHART \_\_\_\_\_  
CONT. ON CHART \_\_\_\_\_  
CONT. ON CHART \_\_\_\_\_  
CONT. ON CHART \_\_\_\_\_  
CONT. ON CHART \_\_\_\_\_

**The Family Snoop** is published on the first day of each month except Aug and Dec. It is sent in .pdf to members who receive it by email. Back copies can be emailed to members as attachments. Send items, articles, stories, etc., to robynechols AT gmail DOT net. You can choose to receive the Family Snoop via email in a pdf format – get it sooner and in color. Contact Sharon Darby, our treasurer. **Deadline for the June 2016 issue is May 25th.** There is no meeting in August.

Dues are \$20 per year for an Individual or \$30 for a Family living at the same address.

The Doris Cochran Research Room is open 1:00 to 4:00 p.m. on Wednesdays and Saturdays,  
**BUT WE NEED SUBSTITUTE VOLUNTEERS TO HELP KEEP IT OPEN!! Please Volunteer!**

**Merced County Genealogical Society**  
**P.O. Box 3061**  
**Merced, CA. 95344**

President	Greg Entriiken
President-elect	--
Vice President	Lois Jimenez
Treasurer	Sharon Darby
Secretary	Stephanie McLeod
Past President	Shari Stetson
Membership	Margie Barnhart
Hospitality	Michle Burroughs
Publicity	Open
Programs	Susan Benes, Michle Burroughs, Rosalie Heppner, Stephanie McLeod & Shari Stetson
Editor, <i>The Family Snoop</i>	Robyn Echols robynechols AT gmail DOT com

### Family History Center

www.familysearch.org  
 1080 E Yosemite Ave Merced. 722-1307  
 Tuesday, Wednesday, 10:00 am to 4:00 pm,  
 Thursday, 10:00 a.m. to 4:00 p.m.  
 Tuesday evening, 7:00 pm to 9:00 pm

Free access on their computers to Ancestry and other programs. Take along your flash drive to save and download. Volunteers are there to help you and microfilms can now be ordered online.

### Merced County Library

www.co.merced.ca.us/index.aspx?nid=77  
 2100 O Street Merced 209-285-7642  
 Fax: 209-726-7912  
 Monday through Thursday – 10am to 6:00pm  
 Friday & Saturday - 10:00am to 5:00pm

### Merced County Courthouse Museum

www.mercedmuseum.org  
 21<sup>st</sup> and N Streets  
 P. O. Box 3557  
 Merced, CA 95344

Wednesday through Sunday - 1:00p  
 m to 4:00pm. Free admission.

### Genealogical Society of Stanislaus County

www.cagenweb.com/lr/stanilaus/gssc.html  
 Click on their newsletter to read online or download.  
 Information about bus trips and programs offered  
 throughout the year that may interest you.

### Monthly Financial Report: March 2016

Income	160.24
Expenses	<u>(878.41)</u>
Checking Balance	\$5,052.57
Savings Account:	3,867.97
CD-9 months; matures on 03/31/16	5,853.88
CD-12 months; matures on 5/18/16	<u>5,678.22</u>
<b>Total in Checking and Savings:</b>	<b><u>\$20,452.64</u></b>

**MCGS Website: <http://www.rootsweb.com/~camcgs>**