

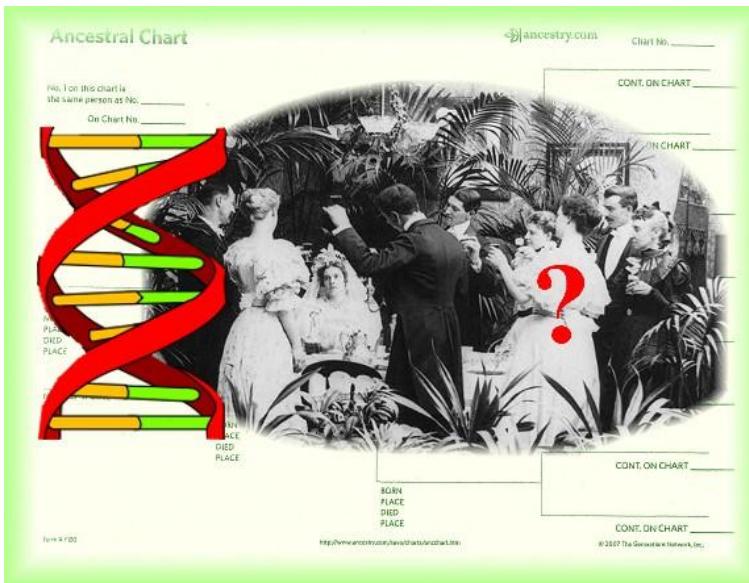
THE FAMILY SNOOP

MERCED COUNTY GENEALOGICAL SOCIETY

VOLUME 35, No. 2

MARCH/APRIL 2017

March 2017 Meeting



Finding Your Most Challenging Ancestors with DNA Tests

Jim Baker

1:00 p.m. Saturday

March 18, 2017

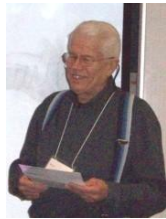
Gracey Room, Merced County Library

Welcome to Our New 2017 Officers



l. to r.-Lois Jimenez, Judy Smith, Howard Smith, Margie Barnhart, Wayne Wallace, Sharon Darby, Stephanie McLeod, Greg Entriken

Our new Merced County Genealogical Society officers were inducted by Darel Scoggin. They are as follows:



Darel Scoggin

- President: Wayne Wallace
- President-elect: (open)
- Vice President: Lois Jimenez
- Treasurer: Sharon Darby
- Secretary: Stephanie McLeod
- Past President: Greg Entriken
- Membership: Margie Barnhart
- Hospitality: Howard & Judy Smith

Congratulations!



Secretary Stephanie McLeod and new president Wayne Wallace conclude the January meeting.

Meeting Attendance

January Membership: Attendance Final Count:
24 Members + 24 Guests for a total of 48.

Welcome, new member: Melissa Smith

February Membership: Attendance Final Count:
29 Members + 8 Guests for a total of **37**.

New member: Welcome Barbara & Fred Lindenberg
Total Members: 50 active

Our Annual Beginners' Program held in January

Taught by Anne Field



Anyone who is just starting their genealogical research would find it beneficial to attend our training for beginners held each January. This year the class was taught by Anne Field. The following are some key points from her presentation.

- The most interesting historical people you will find are members of your own family.
- Start by writing down everything you know about your ancestors, starting with your parents.
- There are standard ways to notate names, dates and places. Learn them.
- Names of counties and countries change over time.
- Use family group sheets and pedigree charts to record family information, either on paper or online.
- There are a lot of sources of information. Some basic ones are:
 - Vital records-legal birth, marriage and death records
 - Census records
 - Cemetery and obituary records
 - Wills and administration of wills records
 - Website search sources including Find-a-Grave, FamilySearch, Ancestry, Fold3, findmypast, GenWeb
 - Always record your source of information.
 - Organize, organize, organize—that doesn't mean a big pile of papers on the floor.
 - Give digital images names that help identify the person or place and date.

- Genealogy database programs are inexpensive and an excellent way to organize and track your information.
- Share with family. Find out from them what they know.
- Use resources like our Doris Cochran Research room in the library and other public repositories.
- The Family History Library in Salt Lake City, Utah is the Mecca of genealogical research.
- Ask for help.

February Speaker: *Kathryn Marshall* Upload, Download, Sync & GEDCOM



We welcomed the return of Kathryn Marshall who spoke this month on how to move between different genealogy database programs and also between certain genealogy database programs and online genealogy family trees.

Kathryn stressed that even if we keep a lot of information on an online site such as Ancestry or FamilyTree on FamilySearch, it is important to have our personal family information on our own computers. There are several programs, many with a free version that do not have all the tools, but which may be used for basic recording of family information. The four she talked about were Family Tree Maker (an Ancestry.com product), Legacy, Roots Magic, and Family Tree Builder.

Roots Magic has a MAC version. Legacy is working on a MAC version.

Syncing between online databases and personal databases may be done with the proper programs. For Ancestry.com, use Family Tree Maker software by McKiev, version 14 or higher (Approximately \$80) or Roots Magic 7. There is a new official update for Family Tree Maker that will be available in March 2017. For FamilyTree on FamilySearch, use Legacy or Roots Magic. For MyHeritage, use Family Tree Builder.

Ancestry.com and Family Tree Maker currently only accepts GEDCOM versions 5.5. Roots Magic currently creates GEDCOM 5.5.1. It will be necessary to do a little juggling around to make a

sync work. Refer to the Roots Magic technical page online for help.

GEDCOM is an acronym for Genealogical Data COMMunication. It is used to convert the database language from any program in order to transfer the data to a new program. She stressed the importance of backing up all information up to a GEDCOM file no matter what genealogical database program you use.

Also, when transferring information using a GEDCOM file, do not add this information directly to an existing database file. Always give your file a different name. When you are ready to merge, be sure to back up your original file first..

This was an information-packed presentation, and there is no substitution for attending. If you get a chance, take the opportunity to learn how to better manage your family history records.

A few Genealogy Tools and Hints

by Darel Scoggin

28 Nov 2016

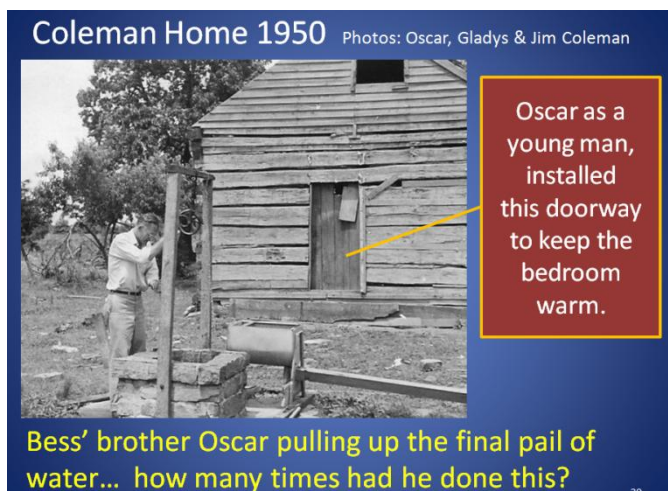
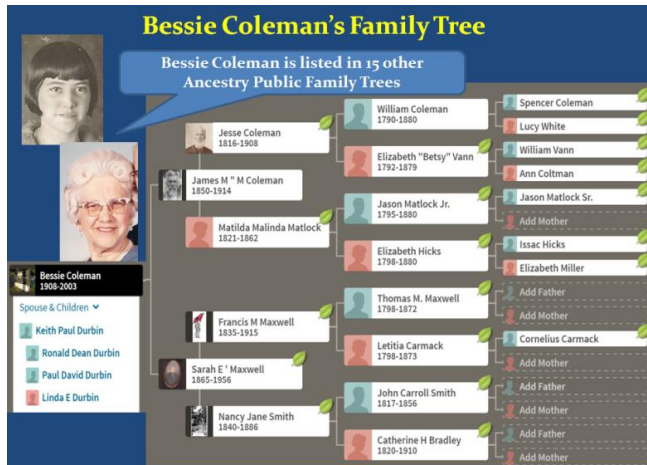
[In our January/February issue of The Family Snoop, Mr. Scoggin shared with us how he has used online tools to further his family history work. This article shares some additional material.]



Below are 5 examples of using the tools:

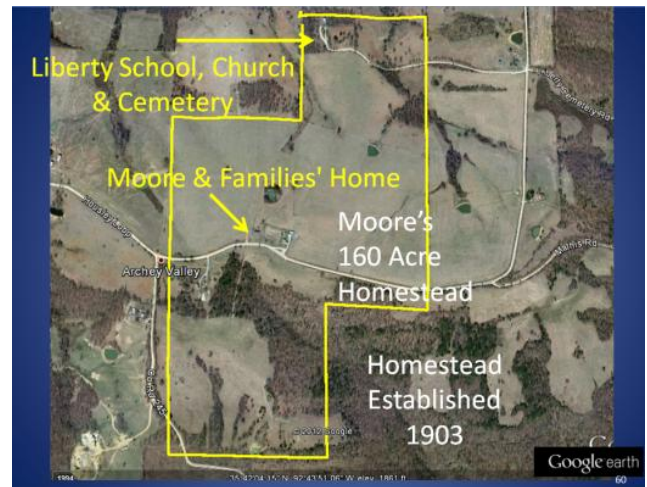
Bessie Coleman was the 22nd child in this James Moore Coleman family, and all 22 children were born in this 2 room log cabin in Chimes, Van Buren Co. Arkansas. Half of the cabin is missing on the photo below, as they used the wood to help build a barn. Note the hand powered washing machine next to the well.

Examples below were using PowerPoint Presentation as a platform to show the snipping from **Ancestry.com**, the photo editing with **Picasa**, **Google Earth**, and **Google Images**. All the above tools were used in some way or another for the full presentation.

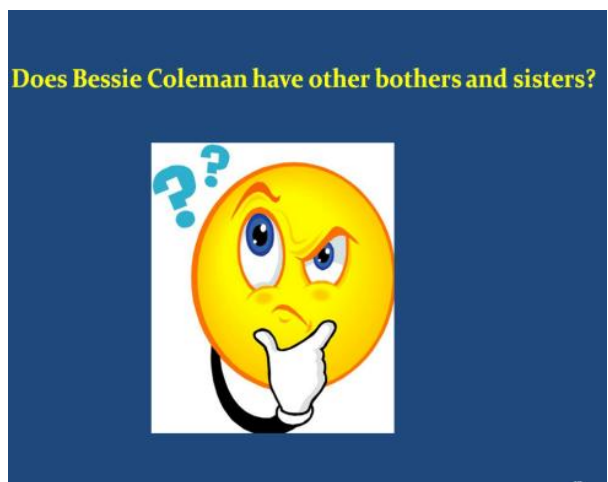



The photos were enhanced with **Picasa**, snipped & sized for each application. The Ancestry.com webpage was snipped and the photos and text boxes added to the PowerPoint Presentation page. You have the ability to put many layers of photos and images on PP and move them, and size them as needed.

Audio: I used the **Southtree.com** to convert the 4 cassette audio tapes, then used Audacity to clean up the background noise and combine the 4 separate recordings into one, and put it into a ".wav" format so all computers can play it as a music recording.



The free Google Earth program was used here with so many outstanding tools and applications. Again snipped and put on the PP Presentation.



This guy is from Google Images:  Google has over 1 trillion images both real and cartoon like this one, easy to find what you need.

From *Internet Genealogy*

Ever use Facebook to connect with family and distant relatives? It is a great way to share research, photos and plan family reunions. There are also groups that share articles about family history research. Make the most of these groups to help you with your.

Genealogy Tips

(The following are reprinted from Internet Genealogy/Your Genealogy Today Research Tips & More! Vol 5 #3)

Facebook Saved Links

Ever scroll through Facebook and come across a great resource



a genealogy friend has posted that you want to check out but don't have time right at the moment? Did you know you can save posts to review at a later time? To do this, at the top right of the post is a downward facing arrow, click on that. That will reveal a drop-down menu with options including "Save link." Click on that. Now you've saved the link, how do you find it for later? At the top left of Facebook is a list of options under the heading Favorites. One option is Saved. Click on that to reveal all of the links you have saved.

By Gena Philibert-Ortega, *Internet Genealogy* and *Your Genealogy Today* author

Tap Into Kindness At Raogk

If the recommendation to "think globally, act locally" is applied to genealogy, Random Acts of Genealogical Kindness, located at <http://www.raogk.org>, comes to mind. You

probably can't travel everywhere you'd like to go to research your family tree. When you have a simple request or two that would normally require you to travel to a location more than fifty miles away, a RAOGK volunteer close to the area might just be able to help. Once you've registered on the RAOGK website, you'll have access to a directory of volunteers informing you where each person is based and what tasks each is willing to help with. Volunteers do not charge for their time, but only for reimbursement of actual expenses such as photocopies, postage, and occasionally parking fees. Common services include doing lookups, taking tombstone and cemetery photos, and locating a document at an archive and copying it. To learn more about how to submit a request, check out the FAQ section at <https://www.raogk.org/guidelines/#fqr3>. And don't forget to say thank you.

By Sue Lisk, *Your Genealogy Today* and *Internet Genealogy* author

Bermuda Ancestors?

Anyone doing research on Bermuda ancestors? I have all the copies of *The Bermuda Beacon*, a newsletter published from about 1983-1988. The issues are full of family trees, births, deaths and other connections of Bermuda people. If you are interested, let me know: mcgs@annefield.net.

Anne Field

Gene-somnia – When you really should go to bed, but you stay up and work on your genealogy instead.

Genealogy – is chasing your own tale.

Upcoming Programs for 2017	
February 25	Kathryn Marshall: Upload, Download, Sync & GEDCOM
March 18	Jim Baker: Finding the Most Challenging Ancestors with DNA Tests
April 15	Kathy Burrow: Rootsweb.com 101
	Invite family and guests
April 1, 1:00p.m.	Next MCGS Board Meeting – Doris Cochran Research room, Main Library

>> 2017 Membership Dues Are Now Payable <<

Merced County Genealogical Society

Membership Form

Print page, fill in your information and mail to:

Merced County Genealogical Society
PO Box 3061
Merced, CA 95344-1061

Name _____ Maiden Name _____

Address _____

City, State, Zip _____

Area Code & Phone _____

E-mail _____

The Family Snoop Newsletter delivered by [check one]: Mail _____ Email _____

___ Annual Individual Dues: \$20.00
___ Annual Student Dues: \$10.00
___ Annual Joint* Dues: \$30.00
___ Lifetime Individual Dues: \$200.00
___ Lifetime Joint* Dues: \$300.00

Note! Joint* members must reside at the same address.

Make check or money order payable to Merced County Genealogical Society.

Please print the surnames, locations, time periods, etc. you are researching
so they may be included in an upcoming *The Family Snoop* Newsletter.

Surnames	Location	Times Period
_____	_____	_____
_____	_____	_____
_____	_____	_____
_____	_____	_____

MCGS Website: <http://www.rootsweb.ancestry.com/~camcgs/>

The Family Snoop is published on the first day of each month except Aug and Dec. It is sent in .pdf to members who receive it by email. Back copies can be emailed to members as attachments. Send items, articles, stories, etc., to robynechols AT gmail DOT net. You can choose to receive the Family Snoop via email in a pdf format – get it sooner and in color. Contact Sharon Darby, our treasurer. **Deadline for the May/June 2017 issue is April 25th.** There is no meeting in August.

Dues are \$20 per year for an Individual or \$30 for a Family living at the same address.

The Doris Cochran Research Room is open 1:00 to 4:00 p.m. on Wednesdays and Saturdays,
BUT WE NEED SUBSTITUTE VOLUNTEERS TO HELP KEEP IT OPEN!! Please Volunteer!

Merced County Genealogical Society
P.O. Box 3061
Merced, CA. 95344

President	Wayne Wallace
President-elect	open
Vice President	Lois Jimenez
Treasurer	Sharon Darby
Secretary	Stephanie McLeod
Past President	Greg Entriiken
Membership	Margie Barnhart
Hospitality	Howard & Judy Smith
Publicity	Open
Programs	Shari Stetson, Michle Burroughs,
Editor, <i>The Family Snoop</i>	Robyn Echols robynechols AT gmail DOT com

Family History Center

<https://familysearch.org>
 1080 E Yosemite Ave Merced. 722-1307
 Tuesday, Wednesday & Thursday 10:00 am-4:00 pm.
 Tuesday, Wednesday & Thursday evening 7:00 pm-9:00 pm

Free access on their computers to Ancestry and other programs. Take along your flash drive to save and download. Volunteers are there to help you and microfilms can now be ordered online.

Merced County Library

www.co.merced.ca.us/index.aspx?nid=77
 2100 O Street Merced 209-285-7642
 Fax: 209-726-7912
 Monday through Thursday – 10am to 6:00pm
 Friday & Saturday - 10:00am to 5:00pm

Merced County Courthouse Museum

www.mercedmuseum.org
 21st and N Streets
 P. O. Box 3557
 Merced, CA 95344
 Wednesday through Sunday - 1:00pm to 4:00pm.
 Free admission.

Genealogical Society of Stanislaus County

www.cagenweb.com/lr/stanilaus/gssc.html
 Click on their newsletter to read online or download.
 Information about bus trips and programs offered throughout the year that may interest you.

Combined Monthly MCGS Financial Report: December 2016 & January 2017

Income	709.11
Expenses	(309.24)
Checking Balance	<u>\$4,714.16</u>
Savings Account:	3,869.57
CD-9 months; matures on 9/22/17	5,870.48
CD-12 months; matures on 5/18/17	<u>5,696.18</u>
Total in Checking and Savings:	<u>\$20,150.39</u>

MCGS Website: <http://www.rootsweb.com/~camcgs>