

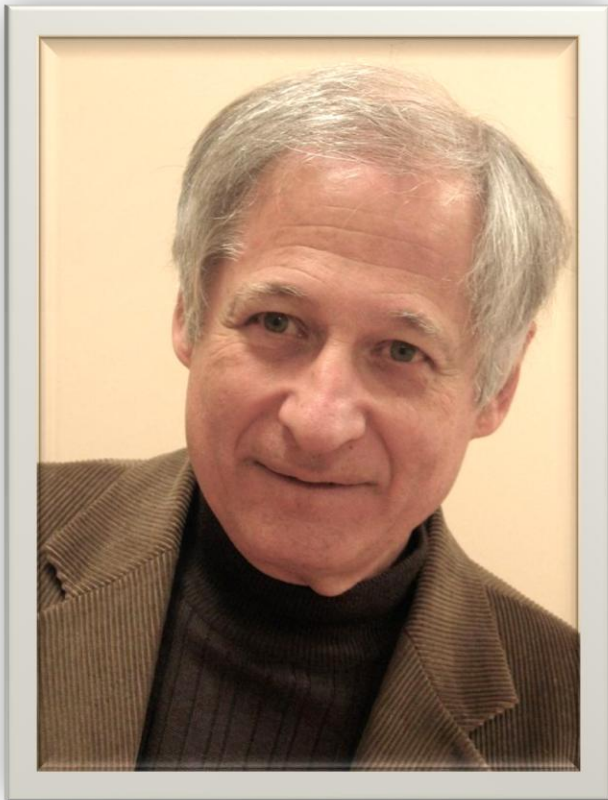
# THE FAMILY SNOOP

MERCED COUNTY GENEALOGICAL SOCIETY

VOLUME 34, No. 02

FEBRUARY 2016

## February 2016 Meeting



### **Case Study: Genealogy of Renee Kaufman**

*Stephen P. Morse, PhD*

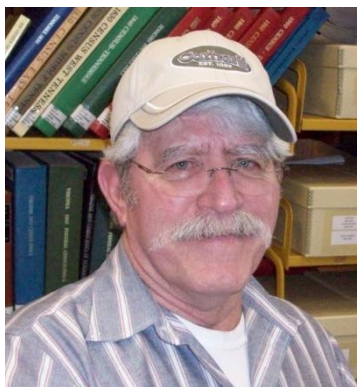
Steve Morse is an amateur genealogist who has been researching his Russian-Jewish origins. Several years ago he developed some web-based searching aids which, much to his surprise, have attracted attention worldwide.

**1:00 p.m. Saturday**

**February 27, 2016**

**Gracey Room, Merced County Library**

## President's Message



Friends and Fellow Members,

It's hard to believe another year has come and gone. It seems like they to by faster and faster.

I would like to thank all of our officers, each and every one, for their dedication and perseverance. It has been a pleasure to serve with you this past year. I look forward to another.

Until we meet again.

Sincerely, Greg Entriiken

a brief tour. After briefing on the resources in the DCR Room, Shari offered some talking point, and then a quick look at FamilySearch.org on the computer. Topics she covered were the following:

"Information to Collect from Your Home and Other People" from Family Search

Family Group Sheet

Ancestral Chart

"Vital Records Chart" from Family Tree magazine (lists years each state started keeping vital records)

Chart we compiled with columns for birth, marriage, death information listing records to look at "What You'll Learn in the Census, Year by Year" from Ancestry

List of websites

---

## January 2016 Meeting Membership:

There were 31 members and 8 guests at our January meeting. The current totals are 30 active members, 10 renewals and two new. Welcome to new members Kris and Rick Nagle.

---

## January Meeting



*L. to R: Shari Stetson, Margie Barnhart, Sharon Darby, Michle Burroughs, Stephanie McLeod, and Greg Entriiken. Not shown: Lois Jimenez*

The January meeting started with the installation of new officers for 2016. Officers are Greg Entriiken, President; Lois Jimenez, Vice President; Stephanie McLeod, Secretary; Sharon Darby, Treasurer; Margie Barnhart, Membership; Shari Stetson, past president; and Michle Burroughs, Hospitality. Officers were installed by Bernadette Castaneda.

The program featured our annual beginner's meeting with training provided by Shari Stetson. As planned, Shari took two separate groups of newcomers to the Doris Cochran Research room for



*Attendees at January meeting*

---

## MCGS Board Meeting:

The next Merced County Genealogical Society board meeting will be held on Saturday, April 2, 2016 at 1:00p.m in the Doris Cochran Research room, Merced County main library building.

---

Family like branches on a tree: we all grow in different directions, yet our roots remain as one.

## Fitting Puzzle Pieces Together – Prussians in Kansas

By Michele Moore

Fitting puzzle pieces together, and learning that a good part of Prussia wound up in Kansas.

About 1873, one Albert Schmanke (b. 9 Apr 1854), gardener on some nobleman's estate in Prussia, was approaching draft age. He was also resentful of having to sneak plums off the trees he cared for in the early dawn because he couldn't afford plums and the landlord would not even let the servants pick them up. He could never buy a farm on which he could grow his own plums in that region.



*Albert Schmanke with his family after he moved to Alma, Kansas. From L. to R.-Albert-40; Edward-9, Anna-8, Martha-3, Amelia-11, and Hannah Büttenhoff Schmanke-30. The oldest three children were by his first wife, Johanna Czirr Schmanke.*

However, his brother Ferdinand (b. 27 Sep 1845) had boarded the ship Texas in Bremen. He was already in Rochester, New York, working.

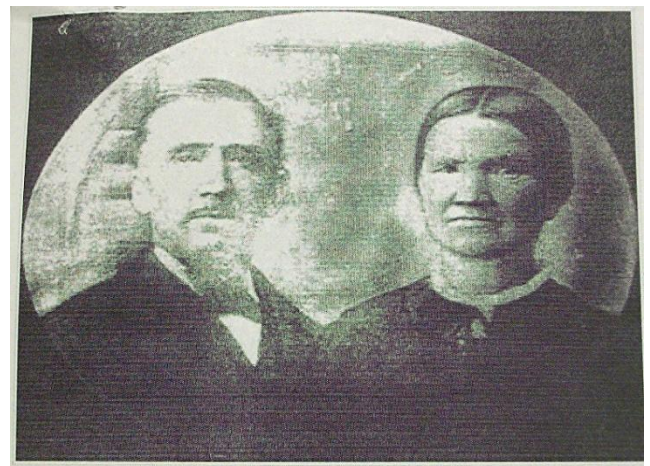
Brother August Albert (b. 4 Aug 1848) must have still been in the army at this time since he was in for seven years in the German-French War. He received a bonus and an Iron Cross, but this was little inspiration to Albert who, according to his daughters, stowed away, was discovered, and given work to do by the captain. I couldn't find him on any passenger lists.

He made his way to Rochester, worked although for a long time he knew little English. When he bought lunch, he ordered one or more of the same things since he did not know what to call other foods.

The brothers knew that there was affordable land in Kansas and many Germans must have saved money with enthusiasm to head that way. They didn't stay long in Rochester. They ended up settling in Alma, Kansas and surrounding communities.

By 13 Dec 1876, Ferdinand had already met, courted and married in Alma, Kansas Wilhelmine D. Dieball, daughter of Christopher Dieball and Henrietta Maiké. Was it love at first sight? Perhaps. They must have been eager to set up their farm in Kansas with no landlord.

Meanwhile, August Albert met the right girl, Caroline (b. 8 Nov 1852) in Leba Felde, Germany, and they married on 28 Apr 1874. Her purse of gold coins and his bonus helped establish themselves in Kansas.



*Johann Ludwig Czirr, 1823-1888 and Eva Carolina Donisch, 1828-1890.*

They hopped aboard the Preußen Ship, S.S. Mosel on 13 Apr 1878 in order to join his brothers. They had baby Carl A. and three year old Therese Hermine with them. In Kansas they had Franz Otto, Emma



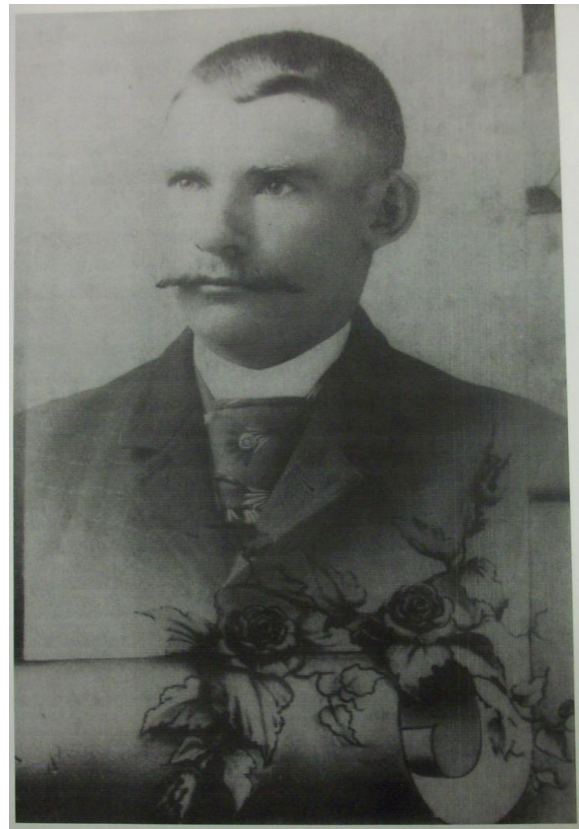
August, Herman Friedrich Michael, Friederich Heinrich, Michael, and Walter Gustav. August lived in Alma, Kansas until his death in 9 Jan 1933, satisfied with his place in life. Caroline died 5 Jan 1945.

They must have thought of the folks across the sea at times. Michael (b. abt. 1820-d. 1857) and Wilhelmina "Minna" Schmanke (b. 1822) remained in Germany.



*Johanna Czirr (1862-1888), Albert Schmanke's first wife.*

In 1881, Albert married Johanna W. Czirr in Alma 18 APR 1881. (b. 1862) Johanna must have died in the mid-1880s. Her parents were John Ludwig Czirr and Eva Carolina Donisch (b. 1823 and 1828), in the same area as the Schmanke brothers. They too emigrated to Wabaunsee County. So he knew his parents in law, even if he saw no more of his parents.



*Johann Ludwig Czirr (1867-1945), Johanna's brother and brother-in-law to Albert Schmanke (According to contributors on Ancestry, this could be the father, Johann Ludwig Czirr, Sr.)*

*(Continued in the March 2016 The Family Snoop)*

---

## Genealogy Blogs

You can jump-start your 2016 genealogy research by choosing some blogs that will help inspire, give you tips and maybe some of the information you need to break through those brick walls on your own family research.

### Geneabloggers:

<http://www.geneabloggers.com/>

One good blog to follow is Geneabloggers which bills itself as "The ultimate site for your genealogy blog – an online community created by Thomas MacEntee"

Here is an example of one of their posts from January 25, 2016  
(<http://www.geneabloggers.com/genealogy-blogging-beat-monday-25-january-2016/>):

Today's blogging inspiration

[Amanuensis Monday](#)

[Madness Monday](#)

[Mappy Monday](#)

[Maritime Monday](#)

[Matrilineal Monday](#)

[Military Monday](#)

[Motivation Monday](#)

[Mystery Monday](#)

...

Our popular series [May I Introduce To You](#) returns this afternoon with Wendy Matthias' interview of Don Taylor of the [D. Taylor's Genealogy](#) blog.

### **Genea-Musings:**

<http://www.geneamusings.com/>

Another is Genea-Musing. Here is the what the blog is about:

... Genea-Musings features genealogy research tips and techniques, genealogy news items and commentary, genealogy humor, San Diego genealogy society news, family history research and some family history stories from the keyboard of Randy Seaver (of Chula Vista CA), who thinks that Genealogy Research Is really FUN! Copyright (c) Randall J. Seaver, 2006-2016.

The blog offers links to other blogs with useful information. For example, check out the post for Sunday, January 24, 2016 at <http://www.geneamusings.com/2016/01/best-of-genea-blogs-week-of-17-to-23.html>

### **Family Tree University Newsletter**

<http://view.familytreecommunity.com/>

This newsletter is designed to promote their paid online courses, but occasionally for teasers they provide some valuable information, such as this information on **Irish immigration** from their --- post: .... While **your Irish ancestors** might have emigrated at various times and for their own myriad reasons, there are some Irish-specific events and reasons that may have triggered their move.

#### **Religion**

In the 1600s, 25,000 Catholics left (some voluntarily, some not so much) for the Caribbean and Virginia; in the 1680s, it was Irish Quakers and Protestant dissenters heading across the Atlantic. These may have been the first waves, but they were hardly the last. Whether your ancestors were Irish Catholic or Protestant, they may have found it prudent to practice their religion elsewhere.

#### **Employment**

While the linen industry made Ulster a player in the Industrial Revolution, the lack of industrialization elsewhere in Ireland meant that many people from rural areas sought jobs in other cities, including London, Boston and New York.

#### **Natural Disasters**

No discussion of Irish immigration is complete without discussing the Irish potato famine. As a result of several years of blight, an estimated 1.8 million Irish people emigrated in a ten year period, with most of them landing in North America.

#### **Community**

Irish communities began to spring up within cities and other regions as early immigrants established themselves and encouraged family and friends to join them.

#### **Adventure**

Some people are content to stay within a few miles of where they grew up; others want to try their luck in a place they've never been before - especially when those places come with the promise of opportunity.

Upcoming Programs for 2015	
March 19	Kathryn Marshall will speak on the topic of maps
April 16	Sharon Hawley-Crum – “Are You Prepared to Pass On the Keys to your Digital Kingdom?”
May 21	Gathering Four Generation Charts
June 18	Kathy Burrows will speak on the topic of adoptions
	Join us and invite others to join with us!

# >> 2016 Membership Dues Are Now Payable <<

## Merced County Genealogical Society

### Membership Form

Print page, fill in your information and mail to:

Merced County Genealogical Society  
PO Box 3061  
Merced, CA 95344-1061

Name \_\_\_\_\_ Maiden Name \_\_\_\_\_

Address \_\_\_\_\_

City, State, Zip \_\_\_\_\_

Area Code & Phone \_\_\_\_\_

E-mail \_\_\_\_\_

*The Family Snoop* Newsletter delivered by [check one]: Mail \_\_\_\_\_ Email \_\_\_\_\_

\_\_\_ Annual Individual Dues: \$20.00  
\_\_\_ Annual Student Dues: \$10.00  
\_\_\_ Annual Joint\* Dues: \$30.00  
\_\_\_ Lifetime Individual Dues: \$200.00  
\_\_\_ Lifetime Joint\* Dues: \$300.00

Note! Joint\* members must reside at the same address.

**Make check or money order payable to Merced County Genealogical Society.**

Please print the surnames, locations, time periods, etc. you are researching  
so they may be included in an upcoming *The Family Snoop* Newsletter.

Surnames	Location	Times Period
_____	_____	_____
_____	_____	_____
_____	_____	_____
_____	_____	_____

MCGS Website: <http://www.rootsweb.ancestry.com/~camcgs/>

**The Family Snoop** is published on the first day of each month except Aug and Dec. It is sent in .pdf to members who receive it by email. Back copies can be emailed to members as attachments. Send items, articles, stories, etc., to robynechols AT gmail DOT net. You can choose to receive the Family Snoop via email in a pdf format – get it sooner and in color. Contact Sharon Darby, our treasurer. **Deadline for the March 2016 issue is February 25th.** There is no meeting in August.

Dues are \$20 per year for an Individual or \$30 for a Family living at the same address.

The Doris Cochran Research Room is open 1:00 to 4:00 p.m. on Wednesdays and Saturdays,  
**BUT WE NEED SUBSTITUTE VOLUNTEERS TO HELP KEEP IT OPEN!! Please Volunteer!**

**Merced County Genealogical Society**  
**P.O. Box 3061**  
**Merced, CA. 95344**

President	Greg Entriiken
President-elect	--
Vice President	Lois Jimenez
Treasurer	Sharon Darby
Secretary	Stephanie McLeod
Past President	Shari Stetson
Membership	Margie Barnhart
Hospitality	Michle Burroughs
Publicity	Open
Programs	Susan Benes, Michle Burroughs, Rosalie Heppner, Stephanie McLeod & Shari Stetson
Editor, <i>The Family Snoop</i>	Robyn Echols robynechols AT gmail DOT com

### Family History Center

www.familysearch.org  
 1080 E Yosemite Ave Merced. 722-1307  
 Tuesday, Wednesday, 10:00 am to 4:00 pm,  
 Thursday, 10:00 a.m. to 4:00 p.m.  
 Tuesday evening, 7:00 pm to 9:00 pm

Free access on their computers to Ancestry and other programs. Take along your flash drive to save and download. Volunteers are there to help you and microfilms can now be ordered online.

### Merced County Library

www.co.merced.ca.us/index.aspx?nid=77  
 2100 O Street Merced 209-285-7642  
 Fax: 209-726-7912  
 Monday through Thursday – 10am to 6:00pm  
 Friday & Saturday - 10:00am to 5:00pm

### Merced County Courthouse Museum

www.mercedmuseum.org  
 21<sup>st</sup> and N Streets  
 P. O. Box 3557  
 Merced, CA 95344  
 Wednesday through Sunday - 1:00pm to 4:00pm.  
 Free admission.

### Genealogical Society of Stanislaus County

www.cagenweb.com/lr/stanilaus/gssc.html  
 Click on their newsletter to read online or download.  
 Information about bus trips and programs offered throughout the year that may interest you.

### Monthly Financial Report: Oct/Nov 2015

Income	0.24
Expenses	<u>(87.97)</u>
Checking Balance	\$5,493.24
Savings Account:	3,867.50
CD-9 months; matures on 03/31/16	5,850.94
CD-12 months; matures on 5/18/16	<u>5,674.68</u>
<b>Total in Checking and Savings:</b>	<b><u>\$20,886.36</u></b>

**MCGS Website: <http://www.rootsweb.com/~camcgs>**